

**RAFFREDDAMENTO**  
**COOLING ITEMS**





# INDICE INDEX

<b>STANDARD ITALIA / ITALY</b>	
R0365 - Attacco rapido R0365 - Quick coupling	pag.: 01
R0366 - Attacco rapido a 90° R0366 - Quick coupling 90°	pag.: 01
R0367 - Innesto rapido filetto maschio R0367 - Male thread quick plug	pag.: 01
R0368 - Innesto rapido con prolunga R0368 - Quick plug with extension	pag.: 01
<b>STANDARD EUROPA / EUROPE</b>	
R0369 - Attacco rapido R0369 - Quick coupling	pag.: 02
R0370 - Attacco rapido a 90° R0370 - Quick coupling 90°	pag.: 02
R0371 - Innesto rapido filetto maschio R0371 - Male thread quick plug	pag.: 02
R0372 - Innesto rapido filetto maschio con valvola R0372 - Male thread quick plug with valve	pag.: 03
R0373 - Innesto rapido filetto femina R0373 - Female thread quick plug	pag.: 03
R0374 - Innesto rapido con prolunga R0374 - Quick plug with extension	pag.: 03
<b>STANDARD USA / USA</b>	
R0375 - Attacco rapido R0375 - Quick coupling	pag.: 04
R0376 - Attacco rapido a 90° R0376 - Quick coupling 90°	pag.: 04
R0377 - Innesto rapido filetto maschio R0377 - Male thread quick plug	pag.: 04
R0379 - Innesto rapido filetto maschio con valvola R0379 - Male thread quick plug with valve	pag.: 05
R0380 - Innesto rapido filetto femmina R0380 - Female thread quick plug	pag.: 05
R0381 - Innesto rapido con prolunga R0381 - Quick plug with extension	pag.: 05
R0382 - Innesto rapido filetto maschio con prolunga R0365 - Male thread quick plug with extension	pag.: 06
<b>STANDARD FRANCIA / FRANCE</b>	
R0383 - Attacco con filetto maschio R0383 - Male thread socket	pag.: 07
R0384 - Attacco con filetto femmina R0384 - Female thread socket	pag.: 07
R0385 - Attacco prolunga R0385 - Extended socket	pag.: 08
R0386 - Attacco prolunga con filetto R0386 - Extended socket with thread	pag.: 08

# INDICE INDEX

<b>R0387 - Attacco rapido</b> R0387 - Quick coupling	pag.: 09
<b>R0388 - Attacco rapido a 90°</b> R0388 - Quick coupling 90°	pag.: 09
<b>R0389 - Attacco rapido per tubi autobloccanti</b> R0389 - Quick coupling - for self-locking hose	pag.: 09
<b>R0393 - Attacco rapido a 90° per tubi autobloccanti</b> R0393 - Quick coupling 90° for self-locking hose	pag.: 09
<b>ACCESSORI / ACCESSORIES</b>	
<b>R0390 - Tappo con lama</b> R0390 - Plug baffle	pag.: 10
<b>R0391 - Tappo con lama elicoidale</b> R0391 - Plug with spiral baffle	pag.: 10
<b>R0392 - Raffreddatore a fontana</b> R0392 - Cascade water junction	pag.: 11
<b>R0394 - Raffreddatore a fontana</b> R0394 - Cascade water junction	pag.: 12
<b>R0169 - Tappo cilindrico con battuta DIN 908</b> R0169 - Cylindrical plug with head DIN 908	pag.: 13
<b>R0168 - Tappo conico DIN 906</b> R0168 - Conical plug DIN 906	pag.: 14
<b>R0396 - Tappo conico DIN 906</b> R0396 - Conical plug DIN 906	pag.: 15
<b>R0397 - Tappo cilindrico DIN 906</b> R0397 - Cylindrical plug DIN 906	pag.: 15
<b>R0506 - Adattatore con cono interno con filetto maschio DIN 3863</b> R0506 - Male thread adapter with inner cone DIN 3863	pag.: 15
<b>R0507 - Adattatore con filetto maschio - femmina</b> R0507 - Male - female thread adapter	pag.: 16
<b>R0508 - Adattatore a 90° con filetto maschio - femmina</b> R0508 - Male thread adapter 90°	pag.: 16
<b>R0509 - Raccordo a 90° con filetto maschio</b> R0509 - Male thread socket 90°	pag.: 16
<b>R0510 - Raccordo a 45° con filetto maschio</b> R0510 - Male thread socket 45°	pag.: 17
<b>R0511 - Raccordo filetto maschio porta gomma</b> R0511 - Male thread socket for rubber hose	pag.: 17
<b>R0512 - Raccordo filetto maschio lungo porta gomma</b> R0512 - Male thread socket long type for rubber hose	pag.: 18
<b>R0513 - Prolunga con filetto maschio - femmina</b> R0513 - Extension with male - female thread	pag.: 18
<b>R0514 - Prolunga con filetto maschio</b> R0514 - Extension with male thread	pag.: 19
<b>R0395 - Tubo di trasferimento calore</b> R0395 - Heat transfer rod	pag.: 20
<b>OR - OR - Ring</b> OR - OR - Ring	pag.: 23

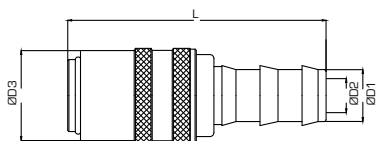
# INDICE

## INDEX

<b>R0515 - Presa per tubi flessibili a bassa pressione</b> R0515 - Socket for low pressure hose lines	pag.: 26
<b>R0516 - Attrezzo manuale per assemplaggio</b> R0516 - Hand operated assembly	pag.: 26
<b>R0517 - Kamlock ad attacco rapido a morsetto</b> R0517 - Socket for low pressure hose lines	pag.: 26
<b>R0518 - Kamlock ad attacco rapido a morsetto - femmina</b> R0518 - Socket for low pressure hose lines - female	pag.: 27
<b>R0519 - Kamlock ad attacco rapido a morsetto - maschio</b> R0519 - Socket for low pressure hose lines - male	pag.: 27
<b>R0520 - Kamlock ad attacco rapido a morsetto</b> R0520 - Socket for low pressure hose lines	pag.: 27
<b>R0521 - Kamlock ad attacco rapido a presa</b> R0521 - Kamlock quick plug	pag.: 28
<b>R0522 - Kamlock ad attacco rapido a presa</b> R0522 - Kamlock quick plug	pag.: 28
<b>R0523 - Kamlock ad attacco rapido a presa</b> R0523 - Kamlock quick plug	pag.: 28
<b>R0524 - Kamlock ad attacco rapido a presa</b> R0524 - Kamlock quick plug	pag.: 29
<b>R0525 - Base espulsore</b> R0525 - Ejector base	pag.: 29
<b>R0526 - Fascetta stringitubo a due orecchie</b> R0526 - Two-ear hose clip	pag.: 30
<b>R0527 - Fascetta stringitubo alte prestazioni</b> R0527 - High performance hose clip	pag.: 30

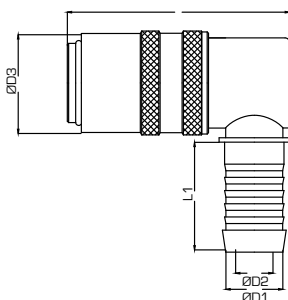


## R0365 Attacco rapido / Quick coupling



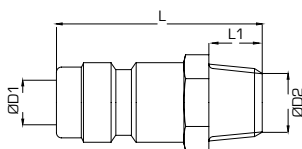
Ordine Nr. / Order No. Con valvola / With Valve	Ordine Nr. / Order No. Senza valvola / Without Valve	D1	D2	D3	L
R0365-09-0001	R0365-09-0003	13	6	18	47
R0365-09-0002	R0365-09-0004	14	9	25	61

## R0366 Attacco rapido a 90° / Quick coupling 90°



Ordine Nr. / Order No. Con valvola / With Valve	Ordine Nr. / Order No. Senza valvola / Without Valve	D1	D2	D3	L	L1
R0366-09-0001	R0366-09-0003	10	6	18	41	18
R0366-09-0002	R0366-09-0004	14	9	25	52	24

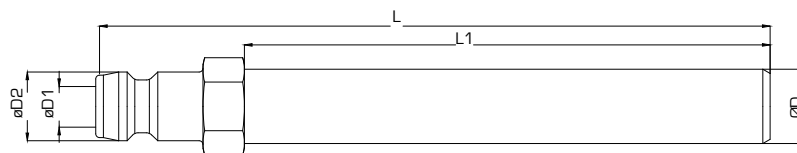
## R0367 Innesto rapido filetto maschio / Male thread quick plug



Ordine Nr. / Order No	D1	D2	L	L1	ES. HEX.
R0367-09-0001	6	1/8" GAS	28	8	11
R0367-09-0002	6	M 10	28	8	11
R0367-09-0003	6	1/4" GAS	28	8	14
R0367-09-0004	9	1/4" GAS	29	10,5	14
R0367-09-0005	9	3/8" GAS	29	10,5	17
R0367-09-0006	9	1/2" GAS	29	10,5	22

## R0368 Innesto rapido con prolunga/ Quick plug with extension

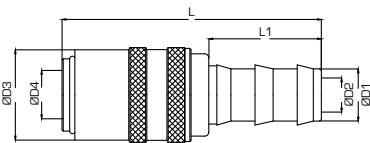
Ordine Nr. / Order No.	D	D1	L	ES. HEX.
R0368-09-0001	10	6	120	14
R0368-09-0002	10	6	240	14
R0368-09-0003	10	6	360	14
R0368-09-0004	14	9	150	17
R0368-09-0005	14	9	300	17



Esempio di ordinativo: Codice  
Example of purchasing order: Code

## R0369

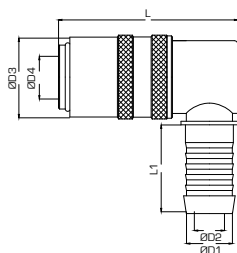
### Attacco rapido/ Quick coupling



Ordine Nr. / Order No. Con valvola / With Valve	Ordine Nr. / Order No. Senza valvola / Without Valve	D1	D2	D3	D4	L	L1
R0369-09-0001	R0369-09-0007	6	5	17	9	59	28
R0369-09-0002	R0369-09-0008	10	6	17	9	59	28
R0369-09-0003	R0369-09-0009	10	8	22	13	65	28
R0369-09-0004	R0369-09-0010	13	9	22	13	65	28
R0369-09-0005	R0369-09-0011	16	13	31	19	96	38
R0369-09-0006	R0369-09-0012	19	13	31	19	96	38

## R0370

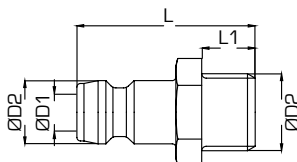
### Attacco rapido a 90° / Quick coupling 90°



Ordine Nr. / Order No. Con valvola / With Valve	Ordine Nr. / Order No. Senza valvola / Without Valve	D1	D2	D3	D4	L	L1
R0370-09-0001	R0370-09-0006	6	5	17	9	43	25.5
R0370-09-0002	R0370-09-0007	9	6	17	9	43	25.5
R0370-09-0003	R0370-09-0008	9	8	22	13	51	30
R0370-09-0004	R0370-09-0009	13	9	22	13	51	30
R0370-09-0005	R0370-09-0010	19	13	31	19	78	34

## R0371

### Innesto rapido filetto maschio / Male thread quick plug

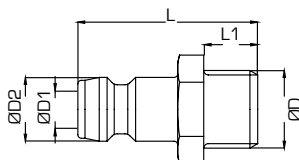


Ordine Nr. / Order No.	D	D1	D2	L	L1	ES. HEX.
R0371-09-0001	BSP 1/8"	6	9	24	7	11
R0371-09-0002	BSP 1/4"	6	9	26	9	14
R0371-09-0003	BSP 3/8"	6	9	26	9	17
R0371-09-0004	M10x1	6	9	24	7	11
R0371-09-0005	M14x1.5	6	9	26	9	15
R0371-09-0006	M16x1.5	6	9	26	9	17
R0371-09-0007	BSP 1/8"	9	13	24	7	14
R0371-09-0008	BSP 1/4"	9	13	26	9	14
R0371-09-0009	BSP 3/8"	9	13	26	9	17
R0371-09-0010	BSP 1/2"	9	13	24	12	22
R0371-09-0011	M10x1	9	13	24	7	14
R0371-09-0012	M14x1.5	9	13	26	9	15
R0371-09-0013	M16x1.5	9	13	26	9	17
R0371-09-0014	BSP 1/2"	13	19	47	12	22
R0371-09-0015	BSP 3/4"	13	19	51	16	27
R0371-09-0016	M24x1.5	13	19	51	16	27



## R0372

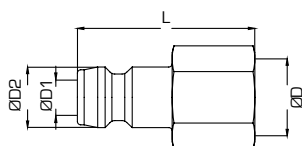
### Innesto rapido filetto maschio con valvola / Male thread quick plug with valve



Ordine Nr. / Order No.	D	D1	D2	L	L1	ES. HEX.
R0372-09-0001	BSP 1/4"	6	13	29	9	14
R0372-09-0002	BSP 3/8"	9	13	29	9	17
R0372-09-0003	M14x1.5	6	13	29	9	15
R0372-09-0004	BSP 1/4"	9	13	29	9	14
R0372-09-0005	BSP 3/8"	9	13	29	9	17
R0372-09-0006	BSP 1/2"	9	13	29	9	22
R0372-09-0007	M14x1.5	6	13	29	9	15
R0372-09-0008	M16x1.5	9	13	29	9	17
R0372-09-0009	BSP 1/2"	13	19	47	12	22
R0372-09-0010	BSP 3/4"	13	19	51	16	27
R0372-09-0011	M24x1.5	13	19	51	16	27

## R0373

### Innesto rapido filetto femmina / Female thread quick plug

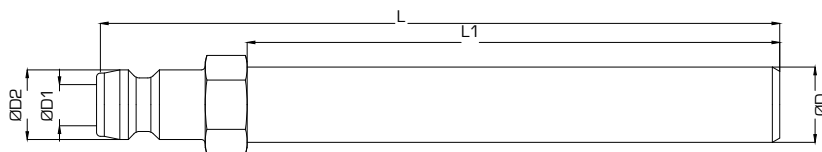


Ordine Nr. / Order No.	D	D1	D2	L	L1	ES. HEX.
R0373-09-0001	BSP 1/8"	6	9	27	7	14
R0373-09-0002	BSP 1/4"	6	9	27	9	17
R0373-09-0003	BSP 3/8"	6	9	27	9	19
R0373-09-0004	BSP 3/8"	9	13	33	9	19
R0373-09-0005	BSP 1/2"	9	13	35	12	24

## R0374

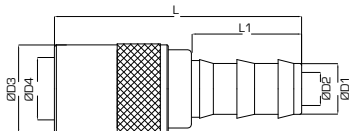
### Innesto rapido con prolunga / Quick plug with extension

Ordine Nr. / Order No.	D	D1	D2	L	L1	ES. HEX.
R0374-09-0001	10	6	9	63	21	11
R0374-09-0002	10	6	9	100	21	11
R0374-09-0003	10	6	9	120	21	11
R0374-09-0004	10	6	9	240	21	11
R0374-09-0005	10	6	9	360	21	11
R0374-09-0006	10	9	13	150	23	14
R0374-09-0007	14	9	13	150	23	14
R0374-09-0008	14	9	13	300	23	14



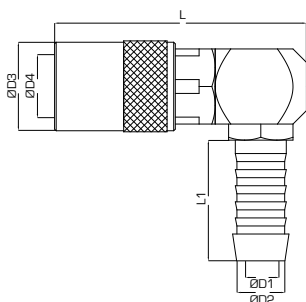
Esempio di ordinativo: Codice  
Example of purchasing order: Code

## R0375 Attacco rapido/ Quick coupling



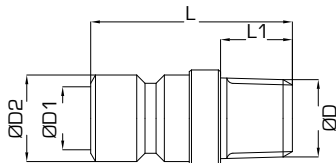
Ordine Nr. / Order No. Con valvola / With Valve	Ordine Nr. / Order No. Senza valvola / Without Valve	D1	D2	D3	D4	L	L1
R0375-09-0001	R0375-09-0007	6	5	17	9.4	56	25.5
R0375-09-0002	R0375-09-0008	10	6	17	9.4	56	25.5
R0375-09-0003	R0375-09-0009	10	8	22	13.5	68	28
R0375-09-0004	R0375-09-0010	13	9	22	13.5	68	28
R0375-09-0005	R0375-09-0011	16	13	31	20	94	34
R0375-09-0006	R0375-09-0012	19	13	31	20	94	34

## R0376 Attacco rapido a 90° / Quick coupling 90°



Ordine Nr. / Order No. Con valvola / With Valve	Ordine Nr. / Order No. Senza valvola / Without Valve	D1	D2	D3	D4	L	L1
R0376-09-0001	R0376-09-0006	5	6	17	9.4	45	25.5
R0376-09-0002	R0376-09-0007	6	9	17	9.4	45	25.5
R0376-09-0003	R0376-09-0008	8	9	22	13.5	60	25
R0376-09-0004	R0376-09-0009	9	13	22	13.5	60	25
R0376-09-0005	R0376-09-0010	13	19	31	13.5	87	34

## R0377 Innesto rapido filetto maschio / Male thread quick plug

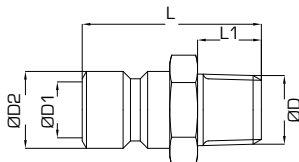


Ordine Nr. / Order No.		ØD	D1	D2	L	L1	ES. HEX.
BSPT	NPT						
R0377-09-0001	R0377-09-0013	1/8"	6	9.4	17	9	13
R0377-09-0002	R0377-09-0014	1/4"	6	9.4	19	12	14
R0377-09-0003	R0377-09-0015	3/8"	6	9.4	21	12	17
R0377-09-0004		M10x1	6	9.4	18	7	11
R0377-09-0005		M14x1.5	6	9.4	18	9	15
R0377-09-0006		M16x1.5	6	9.4	18	9	17
R0377-09-0007	R0377-09-0016	1/4"	9	13.5	30	12	14
R0377-09-0008	R0377-09-0017	3/8"	9	13.5	33	12	17
R0377-09-0009	R0377-09-0018	1/2"	9	13.5	33	16	22
R0377-09-0010		M10x1	6.5	13.5	25	7	14
R0377-09-0011		M14x1.5	9	13.5	27	9	15
R0377-09-0012		M16x1.5	9	13.5	27	9	17

Esempio di ordinativo: Codice  
Example of purchasing order: Code

## R0379

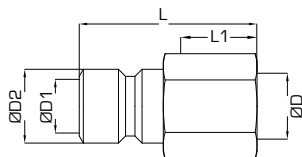
### Innesto rapido filetto maschio con valvola / Male thread quick plug with valve



Ordine Nr. / Order No.		ØD	D1	D2	L	L1	ES. HEX.
BSPT	NPT						
R0379-09-0001	R0379-09-0011	1/4"	6	9.4	29	12	14
R0379-09-0002	R0379-09-0012	3/8"	6	9.4	29	12	17
R0379-09-0003		M14x1.5	6	9.4	29	12	15
R0379-09-0004	R0379-09-0013	1/4"	9	13.5	32.5	12	14
R0379-09-0005	R0379-09-0014	3/8"	9	13.5	32.5	12	17
R0379-09-0006	R0379-09-0015	1/2"	9	13.5	37	16	22
R0379-09-0007		M14x1.5	6	13.5	30	10	15
R0379-09-0008		M16x1.5	9	13.5	30	10	17
R0379-09-0009	R0379-09-0016	1/2"	15	20	45.5	12	22
R0379-09-0010	R0379-09-0017	3/4"	15	20	45.5	16	27

## R0380

### Innesto rapido filetto femmina / Female thread quick plug

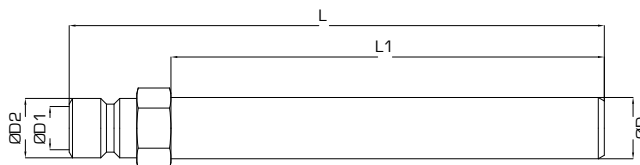


Ordine Nr. / Order No.	ØD	D1	D2	L	L1	ES. HEX.
R0380-09-0001	BSP 1/8"	6	9.4	26	7	13
R0380-09-0002	BSP 1/4"	6	9.4	29	9	16
R0380-09-0003	BSP 3/8"	6	9.4	32	9	19
R0380-09-0004	BSP 1/8"	9	13.5	37	9	17
R0380-09-0005	BSP 1/4"	9	13.5	37	9	19
R0380-09-0006	BSP 3/8"	9	13.5	40	12	24

## R0381

### Innesto rapido con prolunga / Quick plug with extension

Ordine Nr. / Order No.	ØD	D1	D2	L	L1	ES. HEX.
R0381-09-0001	8	6	9.4	63	46	11
R0381-09-0002	8	6	9.4	100	77	11
R0381-09-0003	10	6	9.4	120	103	11
R0381-09-0004	10	6	9.4	240	223	11
R0381-09-0005	10	6	9.4	360	343	11
R0381-09-0006	14	9	13.5	150	127	14
R0381-09-0007	14	9	13.5	300	277	14

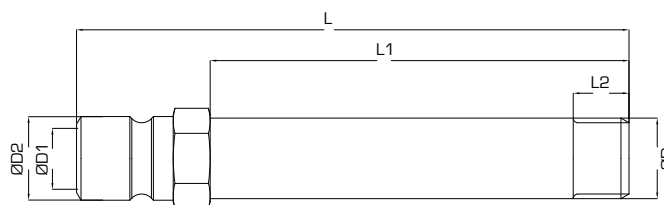


Esempio di ordinativo: Codice  
Example of purchasing order: Code

## R0382

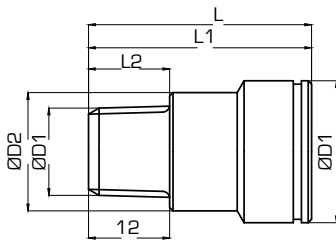
### Innesto rapido filetto maschio con prolunga / Male thread quick plug with extension

Ordine Nr. / Order No.		ØD	D1	D2	L	L1	L2	ES. HEX.
BSPT	NPT							
R0382-09-0001	R0382-09-0007	1/8"	10	9.4	100	83	9	11
R0382-09-0002		M10x1	10	9.4	100	83	9	11
R0382-09-0003	R0382-09-0008	1/4"	13.5	13.5	100	77	12	15
R0382-09-0004		M14x1/5	14	13.5	100	77	12	15
R0382-09-0005	R0382-09-0009	3/8"	17	20	100	62	12	22
R0382-09-0006	R0382-09-0010	1/2"	21	20	100	62	12	22



## R0383

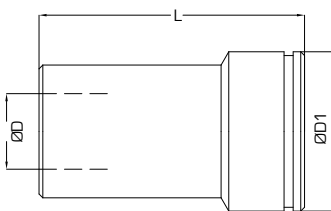
### Attacco con filetto maschio / Male thread socket



Ordine Nr. / Order No.	ØD	ØD1	ØD2	L	L1	L2	ES. INT. INNER HEX.
R0383-09-0001	BSPT 1/8"	17	14	28.5	18.5	7.5	6
R0383-09-0002	BSPT 1/4"	17	14	28.5	15.5	11	6
R0383-09-0003	NPT 1/8"	17	14	28.5	18.5	7	6
R0383-09-0004	NPT 1/4"	17	-	28.5	-	11	6
R0383-09-0005	M10x1	17	14	28.5	18.5	8	6
R0383-09-0006	BSPT 1/8"	21	17.5	32	22	8	6
R0383-09-0007	BSPT 1/4"	21	17.5	33	21	10	8
R0383-09-0008	BSPT 3/8"	21	-	24	11	11	8
R0383-09-0009	NPT 1/8"	21	17.5	32	22	7	1/4"
R0383-09-0010	NPT 1/4"	21	17.5	33	21	11	5/16"
R0383-09-0011	NPT 3/8"	21	-	24	11	11	5/16"
R0383-09-0012	M10x1	21	17.5	32	22	8	6
R0383-09-0013	M10x1.5	21	17.5	32	22	8	6
R0383-09-0014	M14x1.5	21	17.5	32	21	8	6
R0383-09-0015	BSPT 3/8"	32	25	41	28	11	10
R0383-09-0016	BSPT 1/2"	32	25	44	28	14	14
R0383-09-0017	BSPT 3/4"	32	-	32	13	16.5	14
R0383-09-0018	NPT 3/8"	32	25	41	28	11	3/8"
R0383-09-0019	NPT 1/2"	32	25	44	28	14	9/16"
R0383-09-0020	NPT 3/4"	32	-	32	13	14	9/16"

## R0384

### Attacco con filetto femmina / Female thread socket

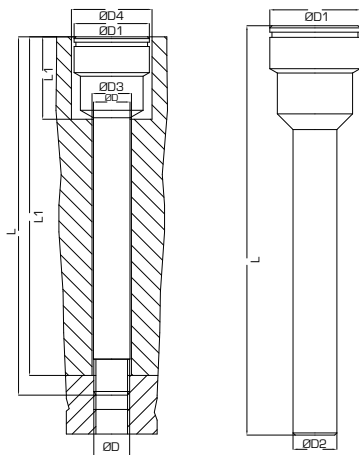


Ordine Nr. / Order No	ØD	ØD1	L1	ES. INT. INNER HEX.
R0384-09-0001	BSP 1/8"	21	35	6
R0384-09-0002	BSP 1/4"	21	39	8
R0384-09-0003	NPT 1/8"	21	35	1/4"
R0384-09-0004	NPT 1/4"	21	39	5/16"
R0384-09-0005	BSP 3/8"	32	49	12
R0384-09-0006	BSP 1/2"	32	50	12

Esempio di ordinativo: Codice  
Example of purchasing order: Code

## R0385

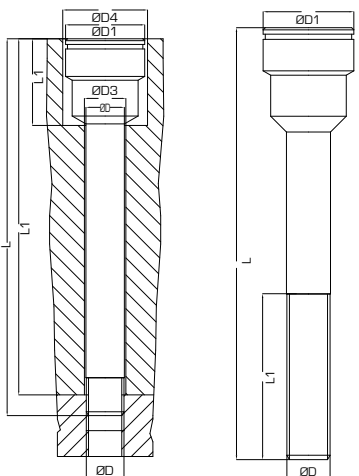
### Attacco prolunga / Extension socket



Ordine Nr. Order No	per filetto for thread	ØD1	ØD2	ØD3	ØD4	L Min.-Max.	L1	L2	ES. INT. INNER HEX.
R0385-09-0001	1/8"	17	10.2	11	18.5	33-100	20	L-5.5	6
R0385-09-0002	1/8"	21	10.2	11	22.5	33-100	23	L-5.5	6
R0385-09-0003	1/8"	21	10.2	11	22.5	100-150	23	L-5.5	6
R0385-09-0004	1/8"	21	10.2	11	22.5	150-200	23	L-5.5	6
R0385-09-0005	1/8"	21	10.2	11	22.5	200-250	23	L-5.5	6
R0385-09-0006	1/4"	21	13.5	14	22.5	34-100	23	L-7.5	8
R0385-09-0007	1/4"	21	13.5	14	22.5	100-150	23	L-7.5	8
R0385-09-0008	1/4"	21	13.5	14	22.5	150-200	23	L-7.5	8
R0385-09-0009	1/4"	21	13.5	14	22.5	200-250	23	L-7.5	8
R0385-09-0010	3/8"	32	17.2	18	33.5	59-150	43	L-8.5	14
R0385-09-0011	3/8"	32	17.2	18	33.5	150-200	43	L-8.5	14
R0385-09-0012	3/8"	32	17.2	18	33.5	200-250	43	L-8.5	14
R0385-09-0013	1/2"	32	21.3	22	33.5	59-150	45	L-11.5	14
R0385-09-0014	1/2"	32	21.3	22	33.5	150-200	45	L-11.5	14
R0385-09-0015	1/2"	32	21.3	22	33.5	200-250	45	L-11.5	14

## R0386

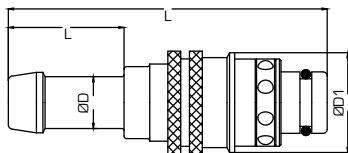
### Attacco prolunga con filetto / Extension socket with thread



Ordine Nr. Order No	ØD dim. filetto thread size	ØD1	ØD2	ØD3	L Min.-Max.	L1	L2	ES. INT. INNER HEX.
R0386-09-0001	BSP 1/8"	21	11	22.5	35-50	26	L-5.5	6
R0386-09-0002	BSP 1/8"	21	11	22.5	50-100	60	L-5.5	6
R0386-09-0003	BSP 1/8"	21	11	22.5	100-150	60	L-5.5	6
R0386-09-0004	BSP 1/4"	21	14	22.5	39-50	27	L-7.5	8
R0386-09-0005	BSP 1/4"	21	14	22.5	55-100	60	L-7.5	8
R0386-09-0006	BSP 1/4"	21	14	22.5	105-150	60	L-7.5	8
R0386-09-0007	BSP 1/4"	21	14	22.5	155-200	60	L-7.5	8

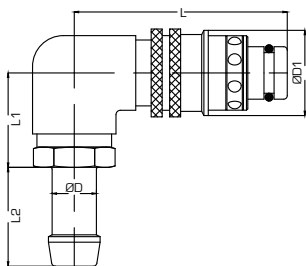
Esempio di ordinativo: Codice  
Example of purchasing order: Code

## R0387 Attacco rapido / Quick coupling



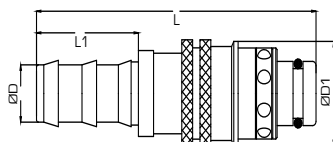
Ordine Nr. / Order No.	Misura Size	ØD	ØD1	L	L1
R0387-09-0001	6	8	17	55	23
R0387-09-0002	8	6	20	66	28
R0387-09-0003	8	8	20	66	28
R0387-09-0004	8	10	20	66	28
R0387-09-0005	8	13	20	66	28
R0387-09-0006	12	13	28	78	33
R0387-09-0007	12	16	28	78	33

## R0388 Attacco rapido a 90° / Quick coupling 90°



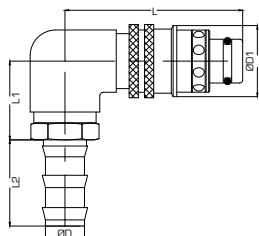
Ordine Nr. / Order No.	Misura Size	ØD	ØD1	L
R0388-09-0001	8	6	20	45.5
R0388-09-0002	8	8	20	45.5
R0388-09-0003	8	10	20	45.5
R0388-09-0004	8	13	20	45.5
R0388-09-0005	12	13	28	54
R0388-09-0006	12	16	28	54

## R0389 Attacco rapido per tubi autobloccanti / Quick coupling for self-locking hose



Ordine Nr. / Order No.	Misura Size	ØD	ØD1	L	L1
R0389-09-0001	8	10	20	65	28
R0389-09-0002	8	13	20	69	28
R0389-09-0003	12	13	28	71	33
R0389-09-0004	12	16	28	82	33

## R0393 Attacco rapido a 90° per tubi autobloccanti / Quick coupling 90° for self-locking hose



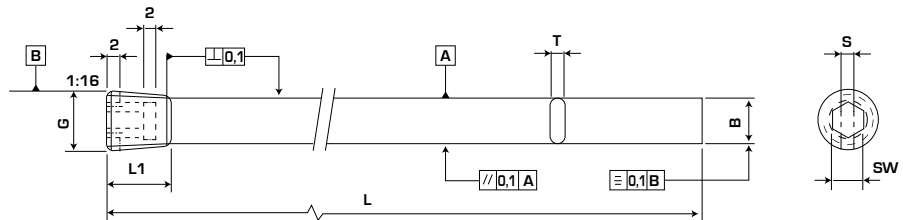
Ordine Nr. / Order No.	Misura Size	ØD	ØD1	L
R0393-09-0001	8	10	20	45.5
R0393-09-0002	8	13	20	45.5
R0393-09-0003	12	13	28	54
R0393-09-0004	12	16	28	54

## R0390

### Tappo con lama / Plug baffle

Materiale: Ottone  
Material: Brass

Codice / Code	G	SW	B	L	L1	T	S	S
R0390-09-0001	1/8"Gas	5	8,2	100	8	1,6	2	8,5
R0390-09-0002	1/8"Gas	5	8,2	200	8	1,6	2	8,5
R0390-09-0003	1/4"Gas	7	11,2	125	10	2,4	3	11,5
R0390-09-0004	1/4"Gas	7	11,2	250	10	2,4	3	11,5
R0390-09-0005	3/8"Gas	8	14,7	150	10	2,4	3	15,0
R0390-09-0006	3/8"Gas	8	14,7	300	10	2,4	3	15,0
R0390-09-0007	1/2"Gas	10	18,2	200	10	2,4	3	18,5
R0390-09-0008	1/2"Gas	10	18,2	400	10	2,4	3	18,5
R0390-09-0009	3/4"Gas	12	23,2	300	12	3,2	3	23,5
R0390-09-0010	3/4"Gas	12	23,2	500	12	3,2	3	23,5

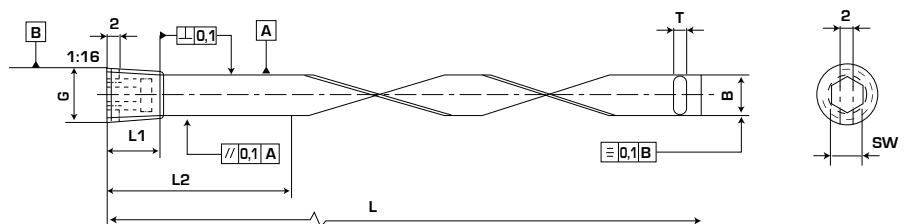


## R0391

### Tappo con lama elicoidale / Plug with spiral baffle

Materiale: Ottone  
Material: Brass

Codice / Code	G	L2	SW	B	L	L1	T	d1
R0391-09-0001	1/16"Gas	51	4	6,5	101	8	1,6	6,8
R0391-09-0002	1/16"Gas	102	4	6,5	203	8	1,6	6,8
R0391-09-0003	1/8"Gas	51	5	8,5	101	8	1,6	8,8
R0391-09-0004	1/8"Gas	102	5	8,5	203	8	1,6	8,8
R0391-09-0005	1/4"Gas	51	7	11,5	127	10	2,4	11,8
R0391-09-0006	1/4"Gas	102	7	11,5	254	10	2,4	11,8
R0391-09-0007	3/8"Gas	51	8	15,0	152	10	2,4	15,3
R0391-09-0008	3/8"Gas	102	8	15,0	305	10	2,4	15,3
R0391-09-0009	1/2"Gas	76	10	18,5	203	10	2,4	18,8
R0391-09-0010	1/2"Gas	127	10	18,5	406	10	2,4	18,8
R0391-09-0011	3/4"Gas	102	12	23,5	305	12	3,2	23,8
R0391-09-0012	3/4"Gas	153	12	23,5	508	12	3,2	23,8



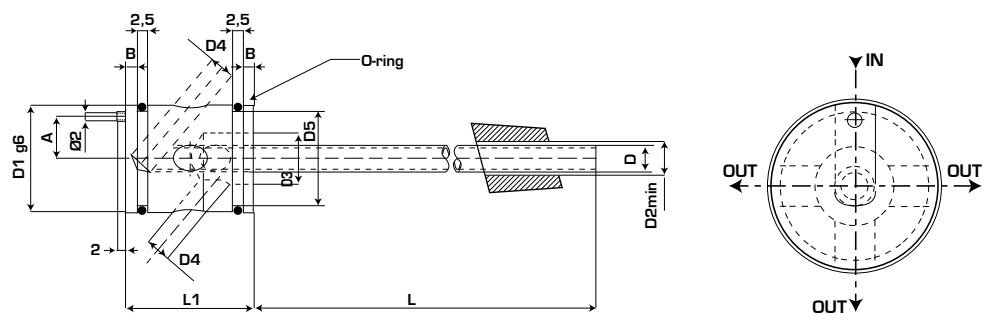
Esempio di ordinativo: Codice  
Example of purchasing order: Code



## R0392 Raffreddatore a fontana / Cascade water junction

**Materiale tubo: Acciaio nichelato**  
 Tube material: Steel nickel plated  
**Materiale cilindro: Ottone nichelato**  
 Cylinder material: Brass nickel plated

Codice / Code	D1 D L	D2	L1	A	B
R0392-09-0001	10 - 0,80 x 160	1,0 - 1,4	15	3,0	1,1
R0392-09-0002	10 - 1,25 x 160	1,5 - 2,0	15	3,0	1,1
R0392-09-0003	10 - 1,65 x 160	2,0 - 3,0	15	3,0	1,1
R0392-09-0004	10 - 2,45 x 160	3,0 - 4,0	15	3,0	1,1
R0392-09-0005	10 - 2,95 x 160	4,0 - 5,0	15	3,0	1,1
R0392-09-0006	16 - 0,80 x 160	1,0 - 1,4	20	5,5	2,2
R0392-09-0007	16 - 0,80 x 300	1,0 - 1,4	20	5,5	2,2
R0392-09-0008	16 - 1,25 x 160	1,5 - 2,0	20	5,5	2,2
R0392-09-0009	16 - 1,25 x 300	1,5 - 2,0	20	5,5	2,2
R0392-09-0010	16 - 1,65 x 160	2,0 - 3,0	20	5,5	2,2
R0392-09-0011	16 - 1,65 x 300	2,0 - 3,0	20	5,5	2,2
R0392-09-0012	16 - 2,45 x 160	3,0 - 4,0	20	5,5	2,2
R0392-09-0013	16 - 2,45 x 300	3,0 - 4,0	20	5,5	2,2
R0392-09-0014	16 - 2,95 x 160	4,0 - 5,0	20	5,5	2,2
R0392-09-0015	16 - 2,95 x 300	4,0 - 5,0	20	5,5	2,2
R0392-09-0016	16 - 3,15 x 160	4,0 - 5,0	20	5,5	2,2
R0392-09-0017	16 - 3,15 x 300	4,0 - 5,0	20	5,5	2,2
R0392-09-0018	25 - 3,95 x 160	5,5 - 6,5	30	9,8	3,4
R0392-09-0019	25 - 3,95 x 300	5,5 - 6,5	30	9,8	3,4
R0392-09-0020	25 - 4,95 x 160	6,5 - 8,0	30	9,8	3,4
R0392-09-0021	25 - 4,95 x 300	6,5 - 8,0	30	9,8	3,4
R0392-09-0022	25 - 5,95 x 160	8,0 - 10,0	30	9,8	3,4
R0392-09-0023	25 - 5,95 x 300	8,0 - 10,0	30	9,8	3,4
R0392-09-0024	25 - 7,95 x 160	10,0 - 12,0	30	9,8	3,4
R0392-09-0025	25 - 7,95 x 300	10,0 - 12,0	30	9,8	3,4

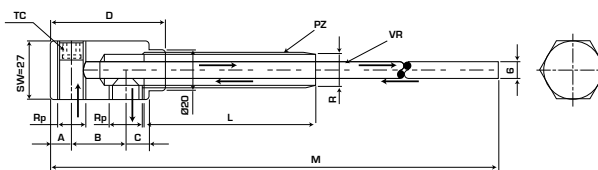


**Esempio di ordinativo: Codice**  
 Example of purchasing order: Code

## R0394 Raffreddatore a fontana / Cascade water junction

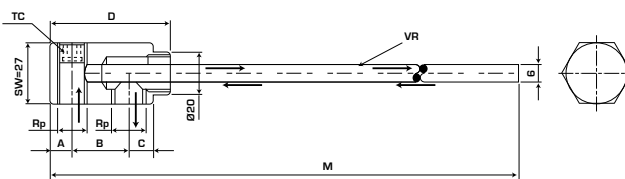
Completo di prolunga  
Extension pipes set  
Materiale: Ottone  
Material: Brass

Codice / Code	Rp	M	A	B	D	C	L
R0394-09-0001	1/8"	356	9	19	42	9	50
R0394-09-0002	1/8"	356	9	19	42	9	100
R0394-09-0003	1/8"	356	9	19	42	9	150
R0394-09-0004	1/8"	356	9	19	42	9	200
R0394-09-0005	1/4"	356	9	19	42	9	50
R0394-09-0006	1/4"	356	9	19	42	9	100
R0394-09-0007	1/4"	356	9	19	42	9	150
R0394-09-0008	1/4"	356	9	19	42	9	200
R0394-09-0009	1/8"	362	9	26	54	12	50
R0394-09-0010	1/8"	362	9	26	54	12	100
R0394-09-0011	1/8"	362	9	26	54	12	150
R0394-09-0012	1/8"	362	9	26	54	12	200
R0394-09-0013	1/4"	362	9	26	54	12	50
R0394-09-0014	1/4"	362	9	26	54	12	100
R0394-09-0015	1/4"	362	9	26	54	12	150
R0394-09-0016	1/4"	362	9	26	54	12	200



## Corpo raffreddatore a fontana senza prolunga / Cascade water junction's body without extension

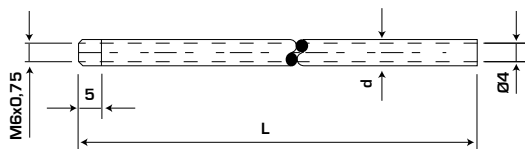
Codice / Code	Rp	M	A	B	D	C
R0394-09-0017	1/8"	356	9	19	42	9
R0394-09-0018	1/4"	356	9	19	42	9
R0394-09-0019	1/8"	362	9	26	54	12
R0394-09-0020	1/4"	362	9	26	54	12



## Prolunga ricambio per raffreddatore a fontana / Spare extension for cascade water junction

Codice / Code	d	L
R0394-09-0021	6	340

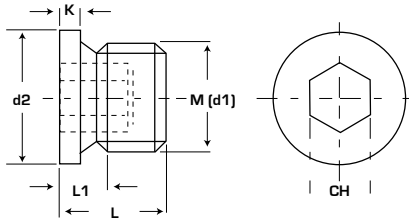
Nome / Name	Codice / Code
Prolunghe Extension pipes	R0514-09-0008
Tappo conico filettato Conical rifflled plug	R0394-09-0022
	R0394-09-0023



Esempio di ordinativo: Codice  
Example of purchasing order: Code

## R0169

### Tappo cilindrico con battuta DIN 908 / Cylindrical plug with head DIN 908



Materiale: Acciaio 5.8 fosfatato  
Material: Steel 5.8 photosphatized

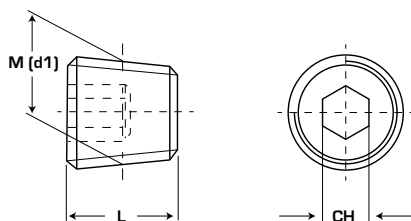
#### Passi metrici / Meters Sizes

Codice	d1	Passo Step	d2	L	K	CH
R0169-01-0001	M8	1	12	11	3	4
R0169-01-0002	M10	1	14	11	3	5
R0169-01-0003	M12	1,5	17	15	3	6
R0169-01-0004	M14	1,5	19	15	3	6
R0169-01-0005	M16	1,5	21	15	3	8
R0169-01-0006	M18	1,5	23	16	4	8
R0169-01-0007	M20	1,5	25	18	4	10
R0169-01-0008	M22	1,5	27	18	4	10
R0169-01-0009	M24	1,5	29	18	4	12
R0169-01-0010	M26	1,5	31	20	4	12
R0169-01-0011	M27	2	32	20	4	12
R0169-01-0012	M30	1,5	36	20	4	17
R0169-01-0013	M33	2	39	21	5	17
R0169-01-0014	M36	1,5	42	21	5	19
R0169-01-0015	M38	1,5	44	21	5	19
R0169-01-0016	M42	1,5	49	21	5	22
R0169-01-0017	M45	1,5	52	21	5	22
R0169-01-0018	M48	1,5	55	21	5	24

#### Passi in pollici / Inches Sizes

Codice	d1	d2	L	K	CH
R0169-01-0019	G1/8"	14	11	3	5
R0169-01-0020	G1/4"	18	15	3	6
R0169-01-0021	G3/8"	22	15	3	8
R0169-01-0022	G1/2"	26	18	4	10
R0169-01-0023	G3/4"	32	20	4	12
R0169-01-0024	G1"	39	21	5	17
R0169-01-0025	G1-1/4"	49	21	5	22
R0169-01-0026	G1-1/2"	55	21	5	24
R0169-01-0027	G2"	68	25	5	32

Esempio di ordinativo: Codice  
Example of purchasing order: Code

**R0168**
**Tappo conico DIN 906 / Conical plug DIN 906**


**Materiale: Acciaio 5.8 fosfatato**  
**Material: Steel 5.8 photosphatized**

**Passi metrici / Meters Sizes**

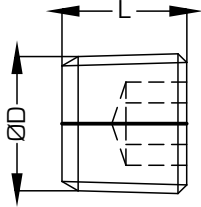
Codice	d1	Passo Step	L	CH
R0168-01-0001	M6	1	6	3
R0168-01-0002	M8	1	8	4
R0168-01-0003	M10	1	8	5
R0168-01-0004	M12	1,5	10	6
R0168-01-0005	M14	1,5	10	7
R0168-01-0006	M16	1,5	10	8
R0168-01-0007	M18	1,5	10	8
R0168-01-0008	M20	1,5	10	10
R0168-01-0009	M22	1,5	10	10
R0168-01-0010	M24	1,5	12	12
R0168-01-0011	M26	1,5	12	12
R0168-01-0012	M30	1,5	12	17
R0168-01-0013	M36	1,5	15	19
R0168-01-0014	M38	1,5	15	19
R0168-01-0015	M42	1,5	18	22
R0168-01-0016	M42	2	18	22
R0168-01-0017	M48	1,5	20	24
R0168-01-0018	M48	2	20	24

**Passi in pollici / Inches Sizes**

Codice	d1	L	CH
R0168-01-0019	G1/8"	8	5
R0168-01-0020	G1/4"	10	7
R0168-01-0021	G3/8"	10	8
R0168-01-0022	G1/2"	10	10
R0168-01-0023	G3/4"	12	12
R0168-01-0024	G1"	12	17
R0168-01-0025	G1-1/4"	18	22
R0168-01-0026	G1-1/2"	22	24

**Esempio di ordinativo: Codice**  
**Example of purchasing order: Code**

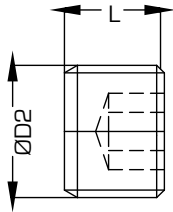
## R0396 Tappo conico DIN 906 / Conical plug DIN 906



Materiale: Ottone  
Material: Brass

Ordine Nr. / Order No.	ØD	L	ES. HEX.
R0396-09-0001	BSPT 1/8"	8	5
R0396-09-0002	BSPT 1/4"	10	7
R0396-09-0003	BSPT 3/8"	10	8
R0396-09-0004	BSPT 1/2"	10	10
R0396-09-0005	M8x075	8	4
R0396-09-0006	M10x1	8	5
R0396-09-0007	M12x1.5	8	6
R0396-09-0008	M14x1.5	10	7

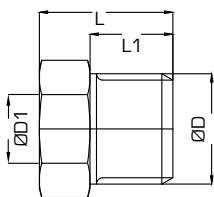
## R0397 Tappo cilindrico DIN 906 / Cylindrical plug DIN 906



Materiale: Ottone  
Material: Brass

Ordine Nr. / Order No.	ØD	L	ES. HEX.
R0397-09-0001	BSP 1/8"	8	5
R0397-09-0002	BSP 1/4"	10	7
R0397-09-0003	BSP 3/8"	10	8
R0397-09-0004	BSP 1/2"	10	10
R0397-09-0005	M8x075	8	4
R0397-09-0006	M10x1	8	5
R0397-09-0007	M12x1.5	8	6
R0397-09-0008	M14x1.5	10	7

## R0506 Adattatore con cono interno con filettatura maschio DIN 3863 / Male thread adapter with inner cone DIN 3863

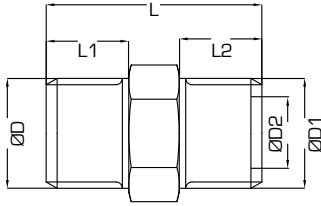


Ordine Nr. / Order No.	ØD	ØD1	L	L1	ES. HEX.
R0506-09-0001	BSP 1/4"	BSP 1/8"	11	7	17
R0506-09-0002	BSP 3/8"	BSP 1/4"	13	9	19
R0506-09-0003	BSP 1/2"	BSP 3/8"	18	12	24
R0506-09-0004	BSP 3/4"	BSP 1/2"	24	16	27
R0506-09-0005	M14x1.5	M10x1	11	7	17
R0506-09-0006	M18x1.5	M14x1.5	14	9	21
R0506-09-0007	M24x1.5	M16x1.5	24	16	27

Esempio di ordinativo: Codice  
Example of purchasing order: Code

## R0507

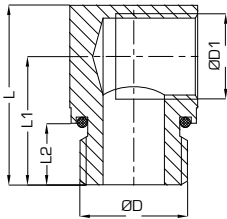
### Adattatore con filetto maschio - femmina / Male - Female thread adapter



Ordine Nr. / Order No.	ØD	D1	D2	L	L1	L2	ES. HEX.
R0507-09-0001	BSP 1/4"	BSP 1/4"	6	23	9	9	17
R0507-09-0002	BSP 3/8"	BSP 3/8"	9	23	9	9	19
R0507-09-0003	BSP 1/2"	BSP 1/2"	13	30	12	12	22
R0507-09-0004	BSP 3/4"	BSP 3/4"	13	40	16	16	27
R0507-09-0005	BSP 1/4"	M14x1.5	6	23	9	9	17
R0507-09-0006	BSP 1/4"	M16x1.5	6	23	9	9	19
R0507-09-0007	BSP 3/8"	M14x1.5	8	23	9	9	19
R0507-09-0008	BSP 3/8"	M16x1.5	9	23	9	9	19
R0507-09-0009	BSP 1/2"	M14x1.5	6	30	12	9	22
R0507-09-0010	BSP 1/2"	M16x1.5	9	30	12	9	22
R0507-09-0011	BSP 1/2"	M24x1.5	13	36	16	12	27
R0507-09-0012	BSP 3/4"	M24x1.5	13	40	16	16	27
R0507-09-0013	M14x1.5	M14x1.5	6	23	9	9	17
R0507-09-0014	M16x1.5	M16x1.5	9	23	9	9	19
R0507-09-0015	M24x1.5	M24x1.5	13	40	16	16	27
R0507-09-0016	M14x1.5	M16x1.5	9	23	9	9	17
R0507-09-0017	M14x1.5	M18x1.5	9	26	12	9	19
R0507-09-0018	M16x1.5	M18x1.5	9	26	12	9	19

## R0508

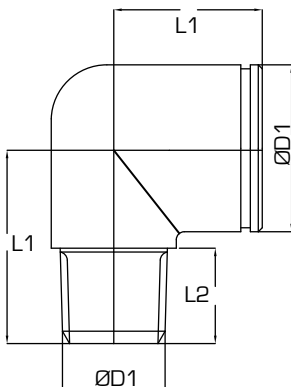
### Adattatore a 90° con filetto maschio - femmina / Male - female thread adapter 90°



Ordine Nr. / Order No.	ØD	ØD1	L	L1	L2	ES. HEX.
R0508-09-0001	BSP 1/4"	BSP 1/8"	25	17	9	15
R0508-09-0002	BSP 3/8"	BSP 1/4"	27.5	19	9	20
R0508-09-0003	BSP 1/2"	BSP 3/8"	35	25	15	25

## R0509

### Raccordo a 90° con filetto maschio / Male thread socket 90°

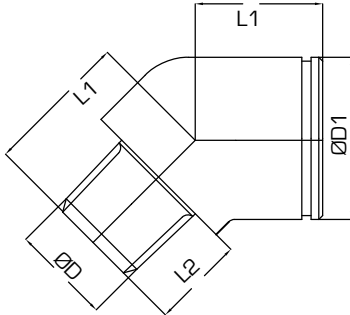


Ordine Nr. / Order No	ØD	ØD1	L	L1	L2	ES. INT. INNER HEX.
R0509-09-0001	BSPT 1/8"	22	23	22	10	19
R0509-09-0002	BSPT 1/4"	22	25	22	12	19
R0509-09-0003	BSPT 3/8"	22	26	22	13	19
R0509-09-0004	NPT 1/4"	22	27	22	14	19

Esempio di ordinativo: Codice  
Example of purchasing order: Code

## R0510

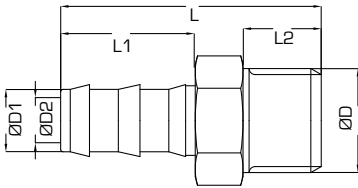
Raccordo a 45° con filetto maschio / Male thread socket 45°



Ordine Nr. / Order No	ØD	ØD1	L	L1	L2	ES. INT. INNER HEX.
R0510-09-0001	BSPT 1/8"	22	16.5	18.5	10	19
R0510-09-0002	BSPT 1/4"	22	16.5	18.5	12	19
R0510-09-0003	BSPT 3/8"	22	16.5	18.5	12	19

## R0511

Raccordo filetto maschio portagomma / Male thread socket for rubber hose



Ordine Nr. / Order No.	ØD	D1	D2	L	L1	L2	ES. HEX.
R0511-09-0001	BSP 1/8"	6	4	39	28	7	14
R0511-09-0002	BSP 1/8"	10	5	39	28	7	14
R0511-09-0003	BSP 1/4"	6	4	39	28	9	17
R0511-09-0004	BSP 1/4"	10	8	39	28	9	17
R0511-09-0005	BSP 1/4"	13	9	39	28	9	17
R0511-09-0006	BSP 3/8"	10	8	39	28	9	19
R0511-09-0007	BSP 3/8"	13	10	43	28	9	19
R0511-09-0008	BSP 1/2"	10	8	43	28	10	22
R0511-09-0009	BSP 1/2"	13	10	43	28	10	22
R0511-09-0010	BSP 1/2"	16	13	58	38	10	22
R0511-09-0011	BSP 3/4"	16	13	62	38	16	27
R0511-09-0012	BSP 3/4"	19	16	62	38	16	27
R0511-09-0013	M10x1	9	6	39	28	7	11
R0511-09-0014	M14x1.5	13	8	39	28	9	15

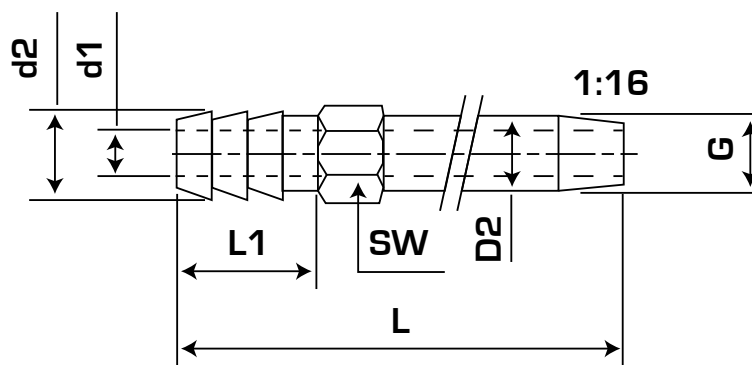
Esempio di ordinativo: Codice  
Example of purchasing order: Code

## R0512

### Raccordo filetto maschio lungo portagomma / Male socket long type for rubber hose

Codice / Code	G	L	SW	d1	d2	D2	Serie Series
R0512-09-0001 *	1/8"Gas	100	11	6	9	10	06
R0512-09-0002	1/8"Gas	150	11	6	9	10	06
R0512-09-0003	1/8"Gas	250	11	6	9	10	06
R0512-09-0004 *	1/4"Gas	150	15	9	13	14	09
R0512-09-0005	1/4"Gas	250	15	9	13	14	09

[\*] = articoli non hanno il terminale filettato; items without thread

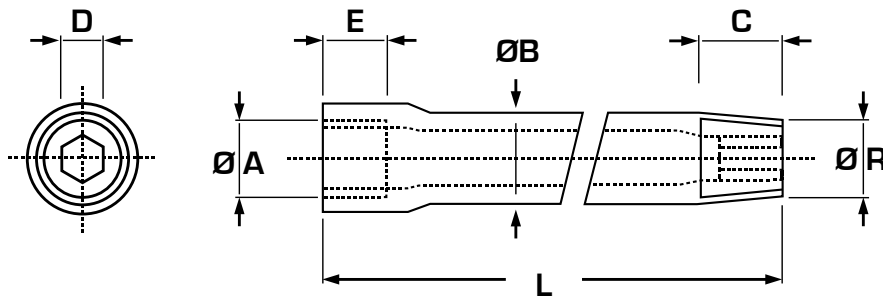


## R0513

### Prolunga con filetto maschio/femmina / Extension with male/female thread

Materiale: Acciaio  
Material: Brass

Codice / Code	ØA	ØB	C	D	E	ØR	L
R0513-09-0001	1/8"	10	9	5	11	R1/8"	50
R0513-09-0002	1/8"	10	9	5	11	R1/8"	75
R0513-09-0003	1/8"	10	9	5	11	R1/8"	100
R0513-09-0004	1/8"	10	9	5	11	R1/8"	125
R0513-09-0005	1/4"	14	10	8	12	R1/4"	50
R0513-09-0006	1/4"	14	10	8	12	R1/4"	75
R0513-09-0007	1/4"	14	10	8	12	R1/4"	100
R0513-09-0008	1/4"	14	10	8	12	R1/4"	125
R0513-09-0009	1/4"	14	10	8	12	R1/4"	150



Esempio di ordinativo: Codice  
Example of purchasing order: Code

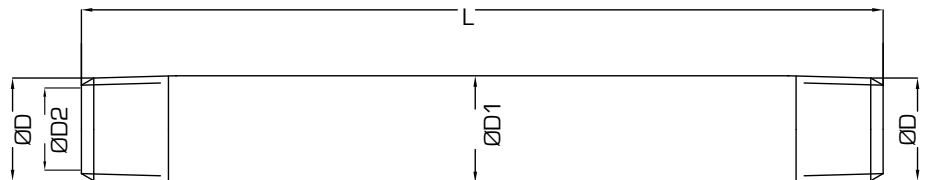


## R0514

### Prolunga con filetto maschio / Extension with male thread

Materiale: Acciaio  
Material: Brass

Ordine Nr. / Order No.		ØD	D1	D2	L
BSPT	NPT				
R0514-09-0001	R0514-09-0020	1/8"	10	6	50
R0514-09-0002	R0514-09-0021	1/8"	10	6	100
R0514-09-0003	R0514-09-0022	1/8"	10	6	150
R0514-09-0004	R0514-09-0023	1/8"	10	6	200
R0514-09-0005	R0514-09-0024	1/8"	10	6	250
R0514-09-0006	R0514-09-0025	1/4"	14	9	50
R0514-09-0007	R0514-09-0026	1/4"	14	9	100
R0514-09-0008	R0514-09-0027	1/4"	14	9	150
R0514-09-0009	R0514-09-0028	1/4"	14	9	200
R0514-09-0010	R0514-09-0029	1/4"	14	9	250
R0514-09-0011	R0514-09-0030	3/8"	17	13	50
R0514-09-0012	R0514-09-0031	3/8"	17	13	100
R0514-09-0013	R0514-09-0032	3/8"	17	13	150
R0514-09-0014	R0514-09-0033	3/8"	17	13	200
R0514-09-0015	R0514-09-0034	3/8"	17	13	250
R0514-09-0016	R0514-09-0035	1/2"	22	16	100
R0514-09-0017	R0514-09-0036	1/2"	22	16	150
R0514-09-0018	R0514-09-0037	1/2"	22	16	200
R0514-09-0019	R0514-09-0038	1/2"	22	16	250



Esempio di ordinativo: Codice  
Example of purchasing order: Code

R0395

Tubi di trasferimento calore / Heat transfer rods



Tubi trasferimento calore  
Heat transfer rods  
Materiale: Ottone  
Material: Brass



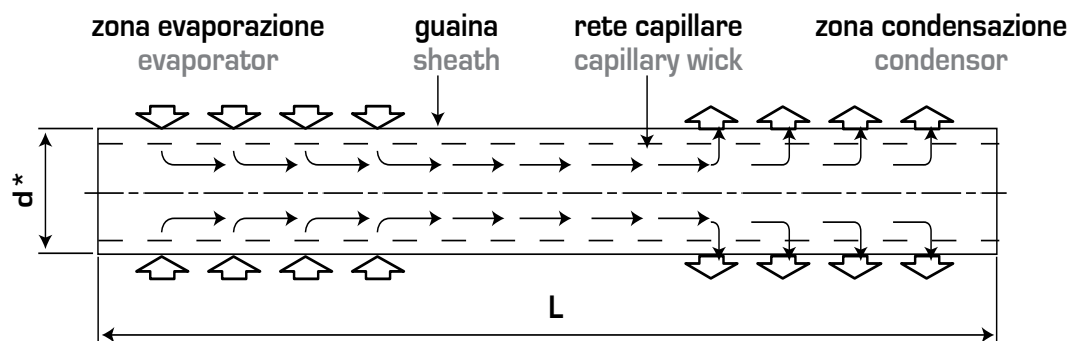
Tubi trasferimento calore filettati  
Threaded heat transfer rods  
Materiale: Ottone  
Material: Brass

La temperatura di lavoro a cui possono essere utilizzati i tubi trasferimento calore è diversa in funzione del tipo di tubo:

- da 5°C a 250°C per tipo1 (tubi standard) e tipo2 (tubi standard con estremità filettata)
- da 150°C a 500°C per tipo3 (tubi per alte temperature) e tipo4 (tubi per alte temperature con estremità filettata)

The service temperature for the heat transfer rods is:

- from 5°C to 250°C for type1 (standard heat pipes) and type2 (standard threaded heat pipes)
- from 150°C to 500°C for type3 (high temperature heat pipes) e type4 (high temperature threaded heat pipes)



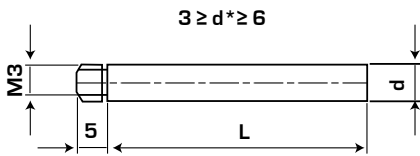
$$d^* = \begin{cases} d_{-0,1}^0 & \text{se } d \leq 12 \\ d_{-0,2}^0 & \text{se } d > 12 \end{cases}$$

Esempio di ordinativo: Codice  
Example of purchasing order: Code

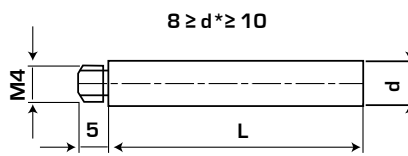
## R0395

## Tubi di trasferimento calore / Heat transfer rods

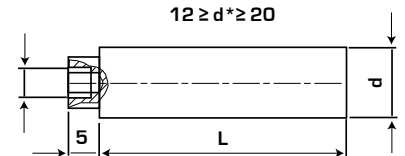
tipo2,4



tipo2,4



tipo 2,4



Codice / Code	d	L	tipo
R0395-09-0001	2	50	tipo1
R0395-09-0002	2	50	tipo2
R0395-09-0003	2	75	tipo 1
R0395-09-0004	2	75	tipo2
R0395-09-0005	2	100	tipo1
R0395-09-0006	2	100	tipo2
R0395-09-0007	2	125	tipo1
R0395-09-0008	2	125	tipo2
R0395-09-0009	2,5	50	tipo1
R0395-09-0010	2,5	50	tipo2
R0395-09-0011	2,5	75	tipo1
R0395-09-0012	2,5	75	tipo2
R0395-09-0013	2,5	100	tipo1
R0395-09-0014	2,5	100	tipo2
R0395-09-0015	2,5	125	tipo1
R0395-09-0016	2,5	125	tipo2
R0395-09-0017	3	50	tipo1
R0395-09-0018	3	50	tipo2
R0395-09-0019	3	50	tipo3
R0395-09-0020	3	50	tipo4
R0395-09-0021	3	75	tipo1
R0395-09-0022	3	75	tipo2
R0395-09-0023	3	75	tipo3
R0395-09-0024	3	75	tipo4
R0395-09-0025	3	100	tipo1
R0395-09-0026	3	100	tipo2
R0395-09-0027	3	100	tipo3
R0395-09-0028	3	100	tipo4
R0395-09-0029	3	125	tipo1
R0395-09-0030	3	125	tipo2
R0395-09-0031	3	125	tipo3
R0395-09-0032	3	125	tipo4
R0395-09-0033	3	150	tipo1
R0395-09-0034	3	150	tipo2
R0395-09-0035	3	150	tipo3
R0395-09-0036	3	150	tipo4
R0395-09-0037	3	200	tipo1
R0395-09-0038	3	200	tipo2
R0395-09-0039	3	200	tipo3
R0395-09-0040	3	200	tipo4

Codice / Code	d	L	tipo
R0395-09-0041	4	50	tipo1
R0395-09-0042	4	50	tipo2
R0395-09-0043	4	50	tipo3
R0395-09-0044	4	50	tipo4
R0395-09-0045	4	75	tipo1
R0395-09-0046	4	75	tipo2
R0395-09-0047	4	75	tipo3
R0395-09-0048	4	75	tipo4
R0395-09-0049	4	100	tipo1
R0395-09-0050	4	100	tipo2
R0395-09-0051	4	100	tipo3
R0395-09-0052	4	100	tipo4
R0395-09-0053	4	125	tipo1
R0395-09-0054	4	125	tipo2
R0395-09-0055	4	125	tipo3
R0395-09-0056	4	125	tipo4
R0395-09-0057	4	150	tipo1
R0395-09-0058	4	150	tipo2
R0395-09-0059	4	150	tipo3
R0395-09-0060	4	150	tipo4
R0395-09-0061	4	200	tipo1
R0395-09-0062	4	200	tipo2
R0395-09-0063	4	200	tipo3
R0395-09-0064	4	200	tipo4
R0395-09-0065	4	250	tipo1
R0395-09-0066	4	250	tipo2
R0395-09-0067	4	250	tipo3
R0395-09-0068	4	250	tipo4
R0395-09-0069	5	50	tipo1
R0395-09-0070	5	50	tipo2
R0395-09-0071	5	50	tipo3
R0395-09-0072	5	50	tipo4
R0395-09-0073	5	75	tipo1
R0395-09-0074	5	75	tipo2
R0395-09-0075	5	75	tipo3
R0395-09-0076	5	75	tipo4
R0395-09-0077	5	100	tipo1
R0395-09-0078	5	100	tipo2
R0395-09-0079	5	100	tipo3
R0395-09-0080	5	100	tipo4

Codice / Code	d	L	tipo
R0395-09-0081	5	125	tipo1
R0395-09-0082	5	125	tipo2
R0395-09-0083	5	125	tipo3
R0395-09-0084	5	125	tipo4
R0395-09-0085	5	150	tipo1
R0395-09-0086	5	150	tipo2
R0395-09-0087	5	150	tipo3
R0395-09-0088	5	150	tipo4
R0395-09-0089	5	200	tipo1
R0395-09-0090	5	200	tipo2
R0395-09-0091	5	200	tipo3
R0395-09-0092	5	200	tipo4
R0395-09-0093	5	250	tipo1
R0395-09-0094	5	250	tipo2
R0395-09-0095	5	250	tipo3
R0395-09-0096	5	250	tipo4
R0395-09-0097	6	50	tipo1
R0395-09-0098	6	50	tipo2
R0395-09-0099	6	50	tipo3
R0395-09-0100	6	50	tipo4
R0395-09-0101	6	75	tipo1
R0395-09-0102	6	75	tipo2
R0395-09-0103	6	75	tipo3
R0395-09-0104	6	75	tipo4
R0395-09-0105	6	100	tipo1
R0395-09-0106	6	100	tipo2
R0395-09-0107	6	100	tipo3
R0395-09-0108	6	100	tipo4
R0395-09-0109	6	125	tipo1
R0395-09-0110	6	125	tipo2
R0395-09-0111	6	125	tipo3
R0395-09-0112	6	125	tipo4
R0395-09-0113	6	150	tipo1
R0395-09-0114	6	150	tipo2
R0395-09-0115	6	150	tipo3
R0395-09-0116	6	150	tipo4
R0395-09-0117	6	200	tipo1
R0395-09-0118	6	200	tipo2
R0395-09-0119	6	200	tipo3
R0395-09-0120	6	200	tipo4

**R0395**
**Tubi di trasferimento calore / Heat transfer rods**

Codice / Code	d	L	tipo
R0395-09-0121	6	250	tipo1
R0395-09-0122	6	250	tipo2
R0395-09-0123	6	250	tipo3
R0395-09-0124	6	250	tipo4
R0395-09-0125	8	100	tipo1
R0395-09-0126	8	100	tipo2
R0395-09-0127	8	100	tipo3
R0395-09-0128	8	100	tipo4
R0395-09-0129	8	125	tipo1
R0395-09-0130	8	125	tipo2
R0395-09-0131	8	125	tipo3
R0395-09-0132	8	125	tipo4
R0395-09-0133	8	150	tipo1
R0395-09-0134	8	150	tipo2
R0395-09-0135	8	150	tipo3
R0395-09-0136	8	150	tipo4
R0395-09-0137	8	200	tipo1
R0395-09-0138	8	200	tipo2
R0395-09-0139	8	200	tipo3
R0395-09-0140	8	200	tipo4
R0395-09-0141	8	250	tipo1
R0395-09-0142	8	250	tipo2
R0395-09-0143	8	250	tipo3
R0395-09-0144	8	250	tipo4
R0395-09-0145	8	300	tipo1
R0395-09-0146	8	300	tipo2
R0395-09-0147	8	300	tipo3
R0395-09-0148	8	300	tipo4
R0395-09-0149	10	100	tipo1
R0395-09-0150	10	100	tipo2
R0395-09-0151	10	100	tipo3
R0395-09-0152	10	100	tipo4
R0395-09-0153	10	125	tipo1
R0395-09-0154	10	125	tipo2
R0395-09-0155	10	125	tipo3
R0395-09-0156	10	125	tipo4
R0395-09-0157	10	150	tipo1
R0395-09-0158	10	150	tipo2
R0395-09-0159	10	150	tipo3
R0395-09-0160	10	150	tipo4
R0395-09-0161	10	200	tipo1
R0395-09-0162	10	200	tipo2
R0395-09-0163	10	200	tipo3
R0395-09-0164	10	200	tipo4
R0395-09-0165	10	250	tipo1
R0395-09-0166	10	250	tipo2
R0395-09-0167	10	250	tipo3
R0395-09-0168	10	250	tipo4

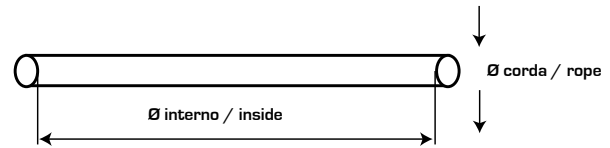
Codice / Code	d	L	tipo
R0395-09-0169	10	300	tipo1
R0395-09-0170	10	300	tipo2
R0395-09-0171	10	300	tipo3
R0395-09-0172	10	300	tipo4
R0395-09-0173	12	100	tipo1
R0395-09-0174	12	100	tipo2
R0395-09-0175	12	100	tipo3
R0395-09-0176	12	100	tipo4
R0395-09-0177	12	125	tipo1
R0395-09-0178	12	125	tipo2
R0395-09-0179	12	125	tipo3
R0395-09-0180	12	125	tipo4
R0395-09-0181	12	150	tipo1
R0395-09-0182	12	150	tipo2
R0395-09-0183	12	150	tipo3
R0395-09-0184	12	150	tipo4
R0395-09-0185	12	200	tipo1
R0395-09-0186	12	200	tipo2
R0395-09-0187	12	200	tipo3
R0395-09-0188	12	200	tipo4
R0395-09-0189	12	250	tipo1
R0395-09-0190	12	250	tipo2
R0395-09-0191	12	250	tipo3
R0395-09-0192	12	250	tipo4
R0395-09-0193	12	300	tipo1
R0395-09-0194	12	300	tipo2
R0395-09-0195	12	300	tipo3
R0395-09-0196	12	300	tipo4
R0395-09-0197	16	100	tipo1
R0395-09-0198	16	100	tipo2
R0395-09-0199	16	100	tipo3
R0395-09-0200	16	100	tipo4
R0395-09-0201	16	125	tipo1
R0395-09-0202	16	125	tipo2
R0395-09-0203	16	125	tipo3
R0395-09-0204	16	125	tipo4
R0395-09-0205	16	150	tipo1
R0395-09-0206	16	150	tipo2
R0395-09-0207	16	150	tipo3
R0395-09-0208	16	150	tipo4
R0395-09-0209	16	200	tipo1
R0395-09-0210	16	200	tipo2
R0395-09-0211	16	200	tipo3
R0395-09-0212	16	200	tipo4
R0395-09-0213	16	250	tipo1
R0395-09-0214	16	250	tipo2
R0395-09-0215	16	250	tipo3
R0395-09-0216	16	250	tipo4

Codice / Code	d	L	tipo
R0395-09-0217	16	300	tipo1
R0395-09-0218	16	300	tipo2
R0395-09-0219	16	300	tipo3
R0395-09-0220	16	300	tipo4
R0395-09-0221	20	100	tipo1
R0395-09-0222	20	100	tipo2
R0395-09-0223	20	100	tipo3
R0395-09-0224	20	100	tipo4
R0395-09-0225	20	125	tipo1
R0395-09-0226	20	125	tipo2
R0395-09-0227	20	125	tipo3
R0395-09-0228	20	125	tipo4
R0395-09-0229	20	150	tipo1
R0395-09-0230	20	150	tipo2
R0395-09-0231	20	150	tipo3
R0395-09-0232	20	150	tipo4
R0395-09-0233	20	200	tipo1
R0395-09-0234	20	200	tipo2
R0395-09-0235	20	200	tipo3
R0395-09-0236	20	200	tipo4
R0395-09-0237	20	250	tipo1
R0395-09-0238	20	250	tipo2
R0395-09-0239	20	250	tipo3
R0395-09-0240	20	250	tipo4
R0395-09-0241	20	300	tipo1
R0395-09-0242	20	300	tipo2
R0395-09-0243	20	300	tipo3
R0395-09-0244	20	300	tipo4

Esempio di ordinativo: Codice  
Example of purchasing order: Code

## OR O-ring / O-ring

Materiale: NBR, VITON  
Material: NBR, VITON



Esempio di ordinativo: OR Codice USA NBR o VITON (indicare il materiale desiderato)  
Example of purchasing order: OR USA Code NBR or VITON (write desired material)

### OR CORDA

OR - Disponibili in Corda  
OR - Material available in Rope Shape

Esempio di ordinativo: ORCORDA Codice  
Example of purchasing order: ORCORDA Code

Codice / Code	1.78	2.00	2.62	3.00	3.20	3.53	2.62	4.00	5.00	6.00	6.35	7.00	8.00	9.00	10.00	11.00	12.00	13.00	14.00	16.00	17.00	18.00	19.00	20.00
Ø Corda / Rope	1.78	2	2.62	3	3.2	3.53	4	5	5.34	6	6.35	7	8	9	10	11	12	13	14	16	17	18	19	20

Nota: Quantità minima 1m. Indicare la misura desiderata  
Note: Minimum quantity 1m. Indicate desired length of the rope

Ø Corda (Rope)	Ø INT. (Inside)	CODICE USA (Usa Code)	British	NBR	VITON	Ø Corda (Rope)	Ø INT. (Inside)	CODICE USA (Usa Code)	British	NBR	VITON	Ø Corda (Rope)	Ø INT. (Inside)	CODICE USA (Usa Code)	British	NBR	VITON
1,78	1,78	004	2007	•	•	1,78	69,57	039	2275	•	•	2,62	23,47	119	3093	•	•
1,78	2,57	005	2010	•	•	1,78	72,75	040	2287	•	•	2,62	23,81	814	132	•	•
1,78	2,90	006	2012	•	•	1,78	75,92	041	2300	•	•	2,62	25,07	120	3100	•	•
1,78	3,69	007	2015	•	•	1,78	82,27	042	2325	•	•	2,62	26,65	121	3106	•	•
1,78	4,48	008	2018	•	•	1,78	88,62	043	2350	•	•	2,62	28,25	122	3112	•	•
1,78	5,28	009	2021	•	•	1,78	94,97	044	2375	•	•	2,62	29,82	123	3118	•	•
1,78	6,07	010	2025	•	•	1,78	101,37	045	2400	•	•	2,62	31,42	124	3125	•	•
1,78	6,75	610	106	•	•	1,78	107,67	046	2425	•	•	2,62	32,99	125	3131	•	•
1,78	7,65	011	2031	•	•	1,78	114,02	047	2450	•	•	2,62	34,60	126	3137	•	•
1,78	8,73	611	108	•	•	1,78	120,37	048	2475	•	•	2,62	36,14	127	3143	•	•
1,78	9,25	012	2037	•	•	1,78	126,72	049	2500	•	•	2,62	37,77	128	3150	•	•
1,78	10,82	013	2043	•	•	1,78	133,07	050	2525	•	•	2,62	39,34	129	3156	•	•
1,78	11,11	806	114	•	•							2,62	40,95	130	3162	•	•
1,78	12,42	014	2050	•	•	2,62	1,24	102	.....	•	•	2,62	42,52	131	3168	•	•
1,78	14,00	015	2056	•	•	2,62	2,06	103	.....	•	•	2,62	44,12	132	3175	•	•
1,78	15,60	016	2062	•	•	2,62	2,84	104	.....	•	•	2,62	45,69	133	3181	•	•
1,78	17,17	017	2068	•	•	2,62	3,63	105	.....	•	•	2,62	47,30	134	3187	•	•
1,78	18,77	018	2075	•	•	2,62	4,42	106	.....	•	•	2,62	48,89	135	3193	•	•
1,78	20,35	019	2081	•	•	2,62	5,23	107	3021	•	•	2,62	50,47	136	3200	•	•
1,78	21,95	020	2087	•	•	2,62	6,02	108	3024	•	•	2,62	52,07	137	3206	•	•
1,78	23,52	021	2093	•	•	2,62	7,59	109	3030	•	•	2,62	53,65	138	3212	•	•
1,78	25,12	022	2100	•	•	2,62	9,19	110	3037	•	•	2,62	55,25	139	3218	•	•
1,78	26,70	023	2106	•	•	2,62	9,92	613	112	•	•	2,62	56,82	140	3225	•	•
1,78	28,30	024	2112	•	•	2,62	10,78	111	3043	•	•	2,62	58,42	141	3231	•	•
1,78	29,87	025	2118	•	•	2,62	11,91	614	115	•	•	2,62	60,00	142	3237	•	•
1,78	31,47	026	2125	•	•	2,62	12,37	112	3050	•	•	2,62	61,60	143	3243	•	•
1,78	33,05	027	2131	•	•	2,62	13,10	615	117	•	•	2,62	63,17	144	3250	•	•
1,78	34,65	028	2137	•	•	2,62	13,95	113	3056	•	•	2,62	64,77	145	3256	•	•
1,78	37,82	029	2150	•	•	2,62	15,08	616	119	•	•	2,62	66,35	146	3262	•	•
1,78	41,00	030	2162	•	•	2,62	15,54	114	3062	•	•	2,62	67,95	147	3268	•	•
1,78	44,17	031	2175	•	•	2,62	15,88	809	121	•	•	2,62	69,52	148	3275	•	•
1,78	47,35	032	2187	•	•	2,62	17,13	115	3068	•	•	2,62	71,12	149	3281	•	•
1,78	50,52	033	2200	•	•	2,62	17,86	617	123	•	•	2,62	72,69	150	3287	•	•
1,78	53,70	034	2212	•	•	2,62	18,72	116	3075	•	•	2,62	75,87	151	3300	•	•
1,78	56,87	035	2225	•	•	2,62	20,21	117	3081	•	•	2,62	82,22	152	3325	•	•
1,78	60,05	036	2237	•	•	2,62	20,63	812	128	•	•	2,62	88,57	153	3350	•	•
1,78	63,22	037	2250	•	•	2,62	21,89	118	3087	•	•	2,62	94,92	154	3375	•	•
1,78	66,40	038	2262	•	•	2,62	22,22	813	130	•	•	2,62	101,27	155	3400	•	•

Esempio di ordinativo: Codice  
Example of purchasing order: Code

OR

O-ring / O-ring

Ø Corda (Rope)	Ø INT. (Inside)	CODICE USA (Usa Code)	British	NBR	VITON	Ø Corda (Rope)	Ø INT. (Inside)	CODICE USA (Usa Code)	British	NBR	VITON	Ø Corda (Rope)	Ø INT. (Inside)	CODICE USA (Usa Code)	British	NBR	VITON
2,62	107,62	156	3425	•	•	3,53	46,04	828	150	•	•	3,53	148,82	257	4587	•	•
2,62	113,97	157	3450	•	•	3,53	47,22	225	4187	•	•	3,53	151,99	258	4600	•	•
2,62	120,32	158	3475	•	•	3,53	47,63	829	152	•	•	3,53	158,34	259	4625	•	•
2,62	126,67	159	3500	•	•	3,53	49,21	830	153	•	•	3,53	164,69	260	4650	•	•
2,62	133,02	160	3525	•	•	3,53	50,39	226	4200	•	•	3,53	171,04	261	4675	•	•
2,62	139,37	161	3550	•	•	3,53	50,80	831	155	•	•	3,53	177,39	262	4700	•	•
2,62	145,72	162	3575	•	•	3,53	52,39	832	156	•	•	3,53	183,74	263	4725	•	•
2,62	152,07	163	3600	•	•	3,53	53,57	227	4212	•	•	3,53	190,09	264	4750	•	•
2,62	158,42	164	3625	•	•	3,53	53,98	833	158	•	•	3,53	196,44	265	4775	•	•
2,62	164,77	165	3650	•	•	3,53	55,56	834	159	•	•	3,53	202,79	266	4800	•	•
2,62	171,12	166	3675	•	•	3,53	56,74	228	4225	•	•	3,53	209,14	267	4825	•	•
2,62	177,47	167	3700	•	•	3,53	57,15	835	161	•	•	3,53	215,49	268	4850	•	•
2,62	183,82	168	3725	•	•	3,53	58,74	836	162	•	•	3,53	221,84	269	4875	•	•
2,62	190,17	169	3750	•	•	3,53	59,92	229	4237	•	•	3,53	228,19	270	4900	•	•
2,62	196,52	170	3775	•	•	3,53	60,33	837	164	•	•	3,53	234,54	271	4925	•	•
2,62	202,87	171	3800	•	•	3,53	61,91	838	165	•	•	3,53	240,89	272	4950	•	•
2,62	209,22	172	3825	•	•	3,53	63,09	230	4250	•	•	3,53	247,24	273	4975	•	•
2,62	215,57	173	3850	•	•	3,53	63,50	839	167	•	•	3,53	253,59	274	41000	•	•
2,62	221,92	174	3875	•	•	3,53	65,09	840	168	•	•	3,53	266,29	275	41050	•	•
2,62	228,27	175	3900	•	•	3,53	66,27	231	4262	•	•	3,53	278,99	276	41100	•	•
2,62	234,62	176	3925	•	•	3,53	66,68	841	170	•	•	3,53	291,69	277	41150	•	•
2,62	240,97	177	3950	•	•	3,53	68,26	842	171	•	•	3,53	304,39	278	41200	•	•
2,62	247,32	178	3975	•	•	3,53	69,44	232	4275	•	•	3,53	329,79	279	41300	•	•
						3,53	69,85	843	173	•	•	3,53	355,19	280	41400	•	•
3,53	7,52	203	4028	•	•	3,53	71,44	844	174	•	•	3,53	380,59	281	41500	•	•
3,53	9,12	204	4036	•	•	3,53	72,62	233	4287	•	•	3,53	405,26	282	41600	•	•
3,53	10,69	205	4042	•	•	3,53	73,03	845	176	•	•	3,53	430,66	283	41700	•	•
3,53	12,29	206	4050	•	•	3,53	74,61	846	177	•	•	3,53	456,06	284	41800	•	•
3,53	13,87	207	4055	•	•	3,53	75,80	234	4300	•	•						
3,53	15,47	208	4061	•	•	3,53	78,97	235	4312	•	•	5,34	10,47	309	6042	•	•
3,53	17,04	209	4067	•	•	3,53	82,14	236	4325	•	•	5,34	12,07	310	6050	•	•
3,53	18,64	210	4075	•	•	3,53	85,32	237	4337	•	•	5,34	13,64	311	6055	•	•
3,53	20,22	211	4081	•	•	3,53	88,50	238	4350	•	•	5,34	15,24	312	6060	•	•
3,53	21,82	212	4087	•	•	3,53	91,67	239	4362	•	•	5,34	16,82	313	6065	•	•
3,53	23,40	213	4093	•	•	3,53	94,84	240	4375	•	•	5,34	18,42	314	6075	•	•
3,53	24,99	214	4100	•	•	3,53	98,02	241	4387	•	•	5,34	19,99	315	6080	•	•
3,53	25,80	618	134	•	•	3,53	101,19	242	4400	•	•	5,34	21,59	316	6085	•	•
3,53	26,58	215	4106	•	•	3,53	104,37	243	4412	•	•	5,34	23,17	317	6090	•	•
3,53	28,17	216	4112	•	•	3,53	107,54	244	4425	•	•	5,34	24,77	318	6100	•	•
3,53	29,75	217	4118	•	•	3,53	110,72	245	4437	•	•	5,34	26,34	319	6105	•	•
3,53	31,34	218	4125	•	•	3,53	113,89	246	4450	•	•	5,34	27,94	320	6110	•	•
3,53	32,93	219	4131	•	•	3,53	117,07	247	4462	•	•	5,34	29,52	321	6115	•	•
3,53	34,52	220	4137	•	•	3,53	120,24	248	4475	•	•	5,34	31,12	322	6125	•	•
3,53	36,10	221	4143	•	•	3,53	123,42	249	4487	•	•	5,34	32,69	323	6130	•	•
3,53	37,69	222	4150	•	•	3,53	126,59	250	4500	•	•	5,34	34,29	324	6135	•	•
3,53	39,69	824	144	•	•	3,53	129,77	251	4512	•	•	5,34	37,47	325	6150	•	•
3,53	40,86	223	4162	•	•	3,53	132,94	252	4525	•	•	5,34	40,65	326	6162	•	•
3,53	41,28	825	146	•	•	3,53	136,12	253	4537	•	•	5,34	43,82	327	6175	•	•
3,53	42,86	826	147	•	•	3,53	139,29	254	4550	•	•	5,34	47,00	328	6187	•	•
3,53	44,04	224	4175	•	•	3,53	142,47	255	4562	•	•	5,34	50,16	329	6200	•	•
3,53	44,95	827	149	•	•	3,53	145,64	256	4575	•	•	5,34	53,34	330	6212	•	•

Esempio di ordinativo: Codice  
Example of purchasing order: Code

**OR**
**O-ring / O-ring**

Ø Corda (Rope)	Ø INT. (Inside)	CODICE USA (Usa Code)	British	NBR	VITON	Ø Corda (Rope)	Ø INT. (Inside)	CODICE USA (Usa Code)	British	NBR	VITON	Ø Corda (Rope)	Ø INT. (Inside)	CODICE USA (Usa Code)	British	NBR	VITON
5,34	56,52	331	6225	•	•	5,34	189,86	367	6745	•	•	7,00	166,69	628	228	•	•
5,34	59,69	332	6237	•	•	5,34	196,21	368	6775	•	•	7,00	168,30	876	229	•	•
5,34	62,87	333	6250	•	•	5,34	202,56	369	6795	•	•	7,00	170,82	440	8675	•	•
5,34	66,04	334	6262	•	•	5,34	208,91	370	6820	•	•	7,00	174,60	878	231	•	•
5,34	69,22	335	6275	•	•	5,34	215,26	371	6850	•	•	7,00	177,17	441	8700	•	•
5,34	72,39	336	6287	•	•	5,34	221,61	372	6870	•	•	7,00	181,00	880	233	•	•
5,34	74,63	619	178	•	•	5,34	227,96	373	6895	•	•	7,00	183,52	442	8725	•	•
5,34	75,57	337	6300	•	•	5,34	234,31	374	6920	•	•	7,00	189,87	443	8750	•	•
5,34	78,74	338	6312	•	•	5,34	240,66	375	6945	•	•	7,00	193,70	884	237	•	•
5,34	79,77	620	181	•	•	5,34	247,01	376	6975	•	•	7,00	196,22	444	8775	•	•
5,34	81,92	339	6325	•	•	5,34	253,36	377	6995	•	•	7,00	200,00	886	239	•	•
5,34	85,09	340	6337	•	•	5,34	266,06	378	61050	•	•	7,00	205,57	445	8800	•	•
5,34	88,27	341	6350	•	•	5,34	278,76	379	61100	•	•	7,00	208,92	674	8825	•	•
5,34	89,69	621	185	•	•	5,34	291,46	380	61150	•	•	7,00	215,27	446	8850	•	•
5,34	91,44	342	6362	•	•	5,34	304,16	381	61200	•	•	7,00	221,61	676	8875	•	•
5,34	94,62	343	6375	•	•	5,34	329,56	382	61300	•	•	7,00	227,97	447	8900	•	•
5,34	97,79	344	6387	•	•	5,34	354,96	383	61400	•	•	7,00	234,30	678	8925	•	•
5,34	100,00	622	189	•	•	5,34	380,36	384	61500	•	•	7,00	240,67	448	8950	•	•
5,34	100,97	345	6400	•	•	5,34	405,26	385	61600	•	•	7,00	247,00	680	8975	•	•
5,34	104,14	346	6412	•	•	5,34	430,66	386	61700	•	•	7,00	253,37	449	81000	•	•
5,34	107,32	347	6425	•	•	5,34	456,06	387	61800	•	•	7,00	259,70	682	81025	•	•
5,34	109,50	623	193	•	•	5,34	481,41	388	61900	•	•	7,00	266,07	450	81050	•	•
5,34	110,49	348	6437	•	•	5,34	506,81	389	62000	•	•	7,00	272,40	684	81075	•	•
5,34	113,67	349	6450	•	•	5,34	532,20	390	62100	•	•	7,00	278,77	451	81100	•	•
5,34	116,84	350	.....	•	•	5,34	557,61	391	62200	•	•	7,00	285,10	686	81125	•	•
5,34	117,50	860	199	•	•	5,34	582,68	392	62300	•	•	7,00	291,47	452	81150	•	•
5,34	120,01	351	.....	•	•	5,34	608,08	393	62400	•	•	7,00	297,80	688	81175	•	•
5,34	120,70	861	201	•	•	5,34	633,48	394	62500	•	•	7,00	304,17	453	81200	•	•
5,34	123,19	352	.....	•	•	5,34	658,88	395	62600	•	•	7,00	316,87	454	81250	•	•
5,34	123,80	862	203	•	•							7,00	329,57	455	81300	•	•
5,34	126,36	353	.....	•	•	7,00	113,67	425	8450	•	•	7,00	342,27	456	81350	•	•
5,34	127,00	863	206	•	•	7,00	114,70	624	197	•	•	7,00	354,97	457	81400	•	•
5,34	129,54	354	.....	•	•	7,00	116,84	426	8462	•	•	7,00	367,67	458	81450	•	•
5,34	130,20	864	208	•	•	7,00	120,02	427	8475	•	•	7,00	380,37	459	81500	•	•
5,34	132,71	355	.....	•	•	7,00	123,19	428	8487	•	•	7,00	393,07	460	81550	•	•
5,34	133,40	865	210	•	•	7,00	124,60	625	204	•	•	7,00	405,26	461	81600	•	•
5,34	135,90	356	.....	•	•	7,00	126,37	429	8500	•	•	7,00	417,96	462	81650	•	•
5,34	136,53	866	213	•	•	7,00	129,54	430	8512	•	•	7,00	430,66	463	81700	•	•
5,34	139,07	357	.....	•	•	7,00	132,72	431	8525	•	•	7,00	443,36	464	81750	•	•
5,34	139,70	867	215	•	•	7,00	134,50	626	211	•	•	7,00	456,06	465	81800	•	•
5,34	142,24	358	.....	•	•	7,00	135,89	432	8537	•	•	7,00	468,76	466	81850	•	•
5,34	142,90	868	217	•	•	7,00	139,07	433	8550	•	•	7,00	481,46	467	81900	•	•
5,34	145,41	359	.....	•	•	7,00	142,24	434	8562	•	•	7,00	494,16	468	81950	•	•
5,34	146,10	869	219	•	•	7,00	145,42	435	8575	•	•	7,00	506,86	469	82000	•	•
5,34	149,20	870	221	•	•	7,00	148,59	436	8587	•	•	7,00	532,26	470	82100	•	•
5,34	151,76	361	6600	•	•	7,00	151,77	437	8600	•	•	7,00	557,66	471	82200	•	•
5,34	158,11	362	6625	•	•	7,00	155,60	872	223	•	•	7,00	582,68	472	82300	•	•
5,34	164,46	363	6645	•	•	7,00	158,12	438	8625	•	•	7,00	608,08	473	82400	•	•
5,34	170,82	364	6670	•	•	7,00	159,50	627	225	•	•	7,00	633,48	474	82500	•	•
5,34	177,16	365	6700	•	•	7,00	161,90	874	226	•	•	7,00	658,88	475	82600	•	•
5,34	183,51	366	6720	•	•	7,00	164,47	439	8650	•	•						

Esempio di ordinativo: Codice  
Example of purchasing order: Code

## R0515

Presa per tubi flessibili a bassa pressione / Socket for low pressure hose lines



Pressione massima di lavoro: PN 16 bar  
Max working pressure: PN 16 bar

Codice / Code	Ø Interno Ø Inside	DIN 20018	ACQUA WATER	PVC	Cod. Macchina Assembl. Assembly Machine	l	d	g
R0515-09-0001	12,5				SPR 333	17	8,5	3
R0515-09-0002	13,5			6x3	SPR 333	20	9,3	5
R0515-09-0003	14,5	6X3,5			SPR 333	17	10	5
R0515-09-0004	16			8x3	SPR 333	17	11,5	5
R0515-09-0005	18	9X3,5		10x3	SPR 333	20	13,5	7
R0515-09-0006	19			12x3	SPR 333	20	13,9	9
R0515-09-0007	19,5				SPR 333	26	14,5	10
R0515-09-0008	22					32	17	16
R0515-09-0009	23		13X3			32	17	18
R0515-09-0010	25	13X5				32	17	19
R0515-09-0011	28	15X6				32	20,5	22
R0515-09-0012	30,5		19X4			33	24,3	24
R0515-09-0013	33	19X6				35	24,8	40
R0515-09-0014	38		25X4,5			35	28	47
R0515-09-0015	41	25X7				40	30	64

## R0516

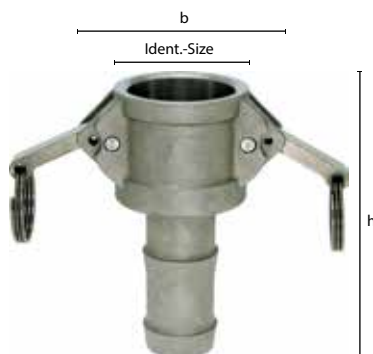
Attrezzo manuale per assemblaggio / Hand operated assembly



Codice / Code	Ø Interno Hose i. D	Ø Esterno Hose o. D	Presca consigliata Suitable socket	Peso per pezzo (Kg) Weight pc. (Kg)
R0516-09-0001	3-20 mm	10-22 mm	R05015 12,5-23	12,2

## R0517

Kamlock ad attacco rapido a morsetto / Socket for low pressure hose lines



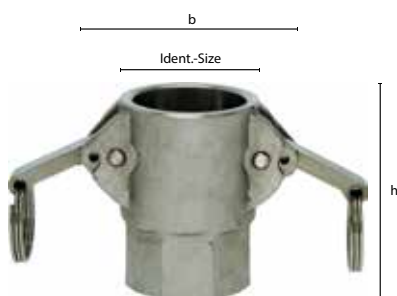
Codice / Code	Dimensione Size	i.D	b	DN	h	Ident Size	Peso per pz (Gr) Weight pc. (G)
R0517-09-0001	50=1/2"	13 mm	40	15	86	24,5	150
R0517-09-0002	75=3/4"	19 mm	63	20	82	32,4	238
R0517-09-0003	100=1"	25 mm	72	25	97	37,3	358
R0517-09-0004	125=1 1/4"	32 mm	83	32	108	46	600
R0517-09-0005	150=1 1/2"	38/40 mm	90	40	112	54	723
R0517-09-0006	200=2"	50 mm	102	50	130	63,8	846
R0517-09-0007	250=2 1/2"	63 mm	119	65	136	76,5	1214
R0517-09-0008	300=3"	75 mm	135	80	162	92,2	1834
R0517-09-0009	400=4"	100 mm	174	100	163	120,3	3045

Materiale: 1.4401  
Material: 1.4401  
Filetto: ISO 228  
Material: ISO 228

Esempio di ordinativo: Codice  
Example of purchasing order: Code



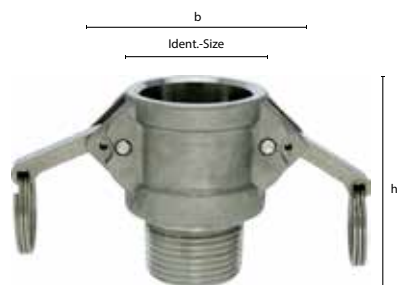
## R0518 Kamlock ad attacco rapido a morsetto - femmina/ Socket for low pressure hose lines - female



**Materiale: 1.4401**  
 Material: 1.4401  
**Filetto: DIN 14-420-7 Femmina**  
 Material: DIN 14-420-7 Female

Codice / Code	Dimensione Size	Filettatura Thread	b	DN	h	Ident Size	Peso per pz (Gr) Weight pc. (G)
R0518-09-0001	50=1/2"	G 1/2"	40	15	45	24,5	147
R0518-09-0002	75=3/4"	G 3/4"	63	20	51	32,4	265
R0518-09-0003	100=1"	G 1"	72	25	62	37,3	398
R0518-09-0004	125=1 1/4"	G 1 1/4"	83	32	70	46	773
R0518-09-0005	150=1 1/2"	G 1 1/2"	90	40	71	54	817
R0518-09-0006	200=2"	G 2"	102	50	78	63,8	880
R0518-09-0007	250=2 1/2"	G 2 1/2"	119	65	77	76,5	1221
R0518-09-0008	300=3"	G 3"	135	80	91	92,2	1802
R0518-09-0009	400=4"	G 4"	174	100	85	120,3	2354

## R0519 Kamlock ad attacco rapido a morsetto - maschio/ Socket for low pressure hose lines - male



**Materiale: 1.4401**  
 Material: 1.4401  
**Filetto: DIN 14-420-7 Maschio**  
 Material: DIN 14-420-7 Male

Codice / Code	Dimensione Size	Filettatura Thread	b	DN	h	Ident Size	Peso per pz (Gr) Weight pc. (G)
R0519-09-0001	50=1/2"	R 1/2"	40	15	47	24,5	130
R0519-09-0002	75=3/4"	R 3/4"	63	20	54	32,4	233
R0519-09-0003	100=1"	R 1"	72	25	64	37,3	343
R0519-09-0004	125=1 1/4"	R 1 1/4"	83	32	70	46	592
R0519-09-0005	150=1 1/2"	R 1 1/2"	90	40	71	54	694
R0519-09-0006	200=2"	R 2"	102	50	77	63,8	708
R0519-09-0007	250=2 1/2"	R 2 1/2"	119	65	85	76,5	1007
R0519-09-0008	300=3"	R 3"	135	80	95	92,2	1438
R0519-09-0009	400=4"	R 4"	174	100	90	120,3	1988

## R0520 Kamlock ad attacco rapido a morsetto - / Socket for low pressure hose lines



**Materiale: 1.4401**  
 Material: 1.4401  
**Filetto: DIN 14-420-7**  
 Material: DIN 14-420-7

Codice / Code	Dimensione Size	b	DN	h	Ident Size	Peso per pz (Gr) Weight pc. (G)
R0520-09-0001	50=1/2"	40	15	42	24,5	123
R0520-09-0002	75=3/4"	63	20	42	32,4	183
R0520-09-0003	100=1"	72	25	49	37,3	274
R0520-09-0004	125=1 1/4"	83	32	57	46	493
R0520-09-0005	150=1 1/2"	90	40	59	54	559
R0520-09-0006	200=2"	102	50	63	63,8	756
R0520-09-0007	250=2 1/2"	119	65	67	76,5	897
R0520-09-0008	300=3"	135	80	70	92,2	1296
R0520-09-0009	400=4"	174	100	70	120,3	1898

**Esempio di ordinativo: Codice**  
 Example of purchasing order: Code

## R0521 Kamlock ad attacco rapido a presa / Kamlock quick plug



Materiale: 1.4401  
Material: 1.4401  
US - ML - Norm  
US - ML - Norm

Codice / Code	Dimensione Size	i.D.	DN	h	Ident Size	Peso per pz (Gr) Weight pc. (G)
R0521-09-0001	50=1/2"	13 mm	15	87	24	120
R0521-09-0002	75=3/4"	19 mm	20	88	32,1	171
R0521-09-0003	100=1"	25 mm	25	103	36,7	284
R0521-09-0004	125=1 1/4"	32 mm	32	110	45,5	442
R0521-09-0005	150=1 1/2"	38/40 mm	40	116	53,4	563
R0521-09-0006	200=2"	50 mm	50	146	63	812
R0521-09-0007	250=2 1/2"	63 mm	65	148	75,8	1186
R0521-09-0008	300=3"	75 mm	80	167	91,5	1815
R0521-09-0009	400=4"	100 mm	100	175	119,5	2945

## R0522 Kamlock ad attacco rapido a presa / Kamlock quick plug



Materiale: 1.4401  
Material: 1.4401  
Filetto: DIN 14-420-7  
Material: DIN 14-420-7

Codice / Code	Dimensione Size	Filettatura Thread	DN	h	Ident Size	Peso per pz (Gr) Weight pc. (G)
R0522-09-0001	50=1/2"	G 1/2"	15	41	24	76
R0522-09-0002	75=3/4"	G 3/4"	20	42	32,1	171
R0522-09-0003	100=1"	G 1"	25	52	36,7	222
R0522-09-0004	125=1 1/4"	G 1 1/4"	32	58	45,5	386
R0522-09-0005	150=1 1/2"	G 1 1/2"	40	62	53,4	493
R0522-09-0006	200=2"	G 2"	50	71	63	644
R0522-09-0007	250=2 1/2"	G 2 1/2"	65	75	75,8	945
R0522-09-0008	300=3"	G 3"	80	79	91,5	1320
R0522-09-0009	400=4"	G 4"	100	81	119,5	2118

## R0523 Kamlock ad attacco rapido a presa / Kamlock quick plug



Materiale: 1.4401  
Material: 1.4401  
Filetto: DIN 14-420-7  
Material: DIN 14-420-7

Codice / Code	Dimensione Size	Filettatura Thread	DN	h	Ident Size	Peso per pz (Gr) Weight pc. (G)
R0523-09-0001	50=1/2"	R 1/2"	15	49	24	103
R0523-09-0002	75=3/4"	R 3/4"	20	64	32,1	185
R0523-09-0003	100=1"	R 1"	25	72	36,7	258
R0523-09-0004	125=1 1/4"	R 1 1/4"	32	81	45,5	477
R0523-09-0005	150=1 1/2"	R 1 1/2"	40	82	53,4	565
R0523-09-0006	200=2"	R 2"	50	90	63	650
R0523-09-0007	250=2 1/2"	R 2 1/2"	65	105	75,8	1317
R0523-09-0008	300=3"	R 3"	80	104	91,5	1766
R0523-09-0009	400=4"	R 4"	100	114	119,5	2804

Esempio di ordinativo: Codice  
Example of purchasing order: Code

## R0524 Kamlock ad attacco rapido a presa/ Kamlock quick plug



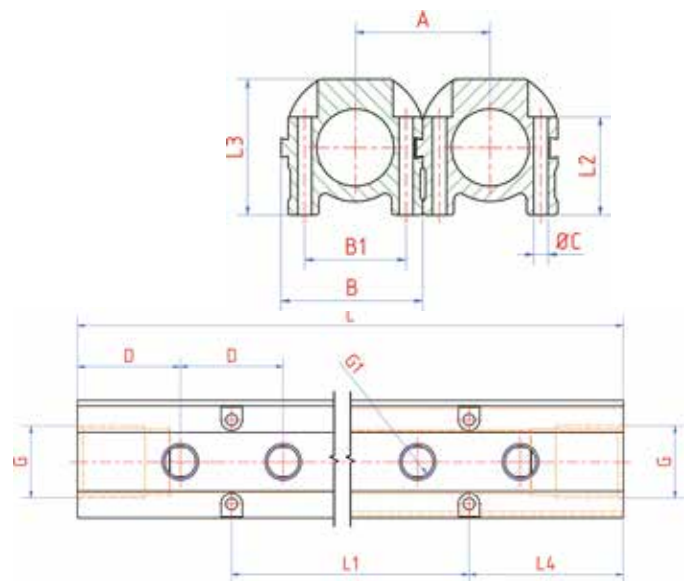
Codice / Code	Dimensione Size	DN	h	Ident Size	Peso per pz (Gr) Weight pc. (G)
R0524-09-0001	50=1/2"	15	36	24	73
R0524-09-0002	75=3/4"	20	39	32,1	93
R0524-09-0003	100=1"	25	46	36,7	139
R0524-09-0004	125=1 1/4"	32	55	45,5	260
R0524-09-0005	150=1 1/2"	40	57	53,4	335
R0524-09-0006	200=2"	50	60	63	441
R0524-09-0007	250=2 1/2"	65	66	75,8	657
R0524-09-0008	300=3"	80	66	91,5	804
R0524-09-0009	400=4"	100	68	119,5	1525

**Materiale: 1.4401**  
 Material: 1.4401  
**Filetto: DIN 14-420-7**  
 Material: DIN 14-420-7

## R0525 Base Espulsore/ Ejectors base



**Materiale: 1.4401**  
 Material: 1.4401  
**Filetto: DIN 14-420-7**  
 Material: DIN 14-420-7



Codice / Code	Colore superfic. Out Color	G1	G	Lungh. Length	B	L1	L2	L3	L2	OC	A	D	B1	Peso per pz (Gr) Weight pc. (G)
R0525-09-0001	4 blu/blue	G 1/4"	G 3/4"	190	43,5	114	30	41,5	38	4,3	41,3	38	31	500
R0525-09-0002	4 rosso/red	G 1/4"	G 3/4"	190	43,5	114	30	41,5	38	4,3	41,3	38	31	500
R0525-09-0003	6 blu/blue	G 1/4"	G 3/4"	266	43,5	190	30	41,5	38	4,3	41,3	38	31	700
R0525-09-0004	6 rosso/red	G 1/4"	G 3/4"	266	43,5	190	30	41,5	38	4,3	41,3	38	31	700
R0525-09-0005	8 blu/blue	G 1/4"	G 3/4"	342	43,5	266	30	41,5	38	4,3	41,3	38	31	900
R0525-09-0006	8 rosso/red	G 1/4"	G 3/4"	342	43,5	266	30	41,5	38	4,3	41,3	38	31	900
R0525-09-0007	10 blu/blue	G 1/4"	G 3/4"	418	43,5	342	30	41,5	38	4,3	41,3	38	31	1100
R0525-09-0008	10 rosso/red	G 1/4"	G 3/4"	418	43,5	342	30	41,5	38	4,3	41,3	38	31	1100

**Esempio di ordinativo: Codice**  
 Example of purchasing order: Code

## R0526

### Fascetta stringitubo a due orecchie / Two-ear hose clip



Materiale: DIN 2393 C  
Material: DIN 2393 C

Codice / Code	Range D. Tubo Hose o. D./Range	Larghezza fascetta Band width	Peso per pz (Gr) Weight pc. (G)
R0526-09-0001	5-7 mm	5,5 mm	1
R0526-09-0002	7-9 mm	6 mm	2
R0526-09-0003	9-11 mm	6 mm	2
R0526-09-0004	11-13 mm	6 mm	3
R0526-09-0005	13-15 mm	7 mm	4
R0526-09-0006	14-17 mm	7,5 mm	4
R0526-09-0007	15-18 mm	8 mm	5
R0526-09-0008	17-20 mm	8 mm	5
R0526-09-0009	19-21 mm	7 mm	5
R0526-09-0010	20-23 mm	9 mm	8
R0526-09-0011	22-25 mm	9 mm	9
R0526-09-0012	23-27 mm	9 mm	9
R0526-09-0013	25-28 mm	9 mm	10
R0526-09-0014	27-31 mm	9 mm	12
R0526-09-0015	31-34 mm	9 mm	13
R0526-09-0016	34-37 mm	9 mm	16
R0526-09-0017	37-40 mm	9 mm	17
R0526-09-0018	40-43 mm	9 mm	18

## R0527

### Fascetta stringi tubo alte prestazioni / High performance hose clip



Materiale: DIN 3017  
Material: DIN 3017

Codice / Code	Range mm	Pollici Inch	b	max Nm	s	B	h	L	Peso per pz (Gr) Weight pc. (G)
R0527-09-0001	8-12	5/18" - 1/2"	9	2+0,5	0,7	14	11,5	20,5	12
R0527-09-0002	10-16	5/18" - 5/8"	9	2+0,5	0,8	14	11,5	20,5	13
R0527-09-0003	12-22	1/2" - 3/4"	9	3+0,5	0,8	14	11,5	24	16
R0527-09-0004	16-27	5/8" - 1"	9	5+0,5	0,8	16	13	31	17
R0527-09-0005	20-32	3/4" - 1 1/4"	12	5+0,5	0,8	16	13	31	27
R0527-09-0006	25-40	1" - 1 5/8"	12	5+0,5	1,0	16	13	31	32
R0527-09-0007	30-45	1 3/8" - 1 3/4"	12	5+0,5	1,0	16	13	31	33
R0527-09-0008	35-50	1 1/4" - 2"	12	5+0,5	1,0	16	13	31	35
R0527-09-0009	40-60	1 5/8" - 2 3/8"	12	5+0,5	1,0	16	13	31	39
R0527-09-0010	50-70	2" - 2 3/4"	12	5+0,5	1,0	16	13	31	43
R0527-09-0011	60-80	2 3/8" - 3 1/8"	12	5+0,5	1,0	16	13	31	45
R0527-09-0012	70-90	2 3/4" - 3 1/2"	12	5+0,5	1,0	16	13	37	52
R0527-09-0013	80-100	3 1/8" - 4"	12	5+0,5	1,0	16	13	37	53

Esempio di ordinativo: Codice  
Example of purchasing order: Code



