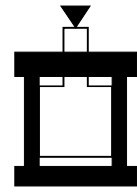


BLOCK CYLINDER CDD SERIES



Description :

This cartridge block cylinder CDD can be completely integrated into the mold. Double acting, make mould simple and space saving design. No use of piping reduces the risk of leakage.

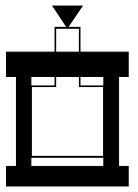
Design :

- Anti-corrosion treated steel body
- High hardness solid piston rod
- Double rod sealing



Block cylinder **CDD**

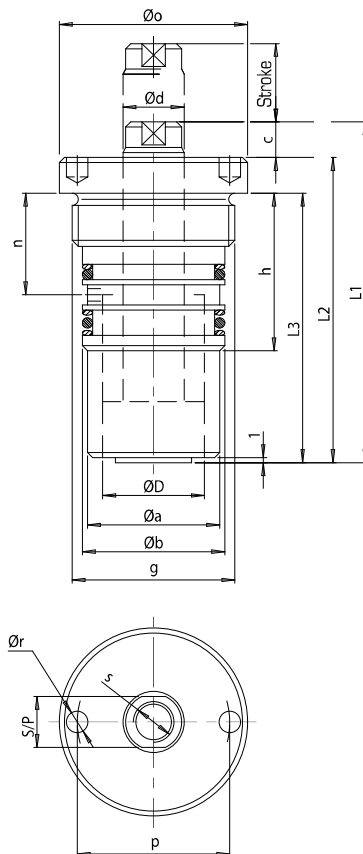
CDD SERIES DIMENSIONS



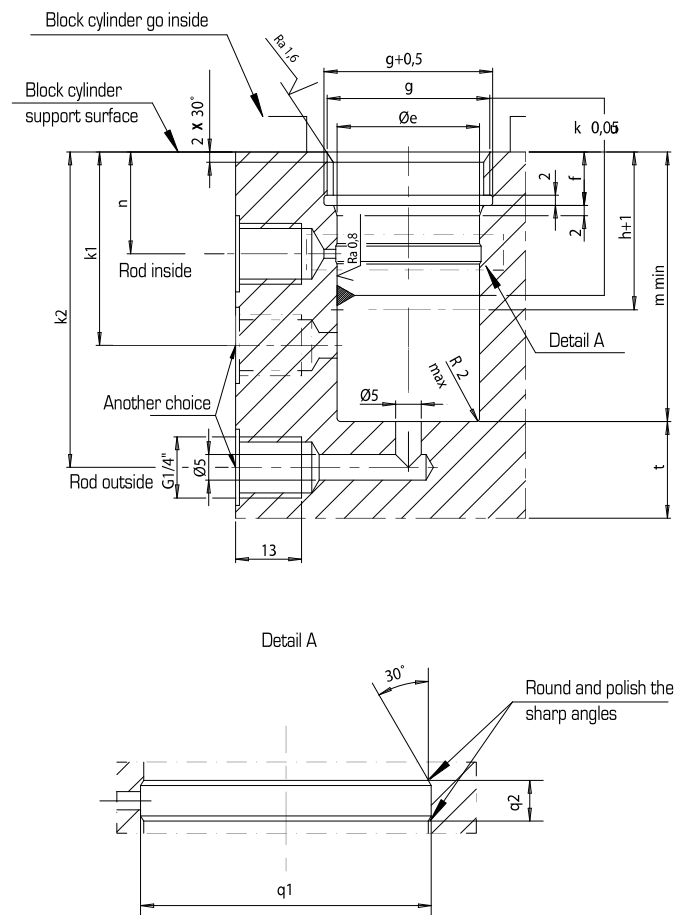
Features :

- 4 models
- Stroke from 16 to 32 mm
- Assembly by body thread
- Ship with O rings and rings anti-extrusion
- Available with Viton® seals, temperature up to 150°C

Dimensions :



Dimensions of holes machining :



Designation :

- Standard Nitrile seals :
- Option Viton® seals (add V) :
- Small pocket for Nitrile seals (add PJ) :

CDD __

CDD __ V

PJ CDD __ ,

Viton : PJ CDD __ V

TYPE	STROKE mm	PISTON Ø D mm	ROD Ø d mm	AVANCE RETURN cm ³	Dimensions																				
					L1 ±1	L2	L3	Øa f7	Øb	c	Øe H7	f +0,2	g	h	k1 mini	k2 mini	m mini	n	Øo	p	q1 q2	Ør	s depth	t	S/P
CDD10	16	16	10	2,0 1,2	65	59	48	21	22	6	22	8,5	M26x1,5	30	34	53	48	19	31	25	23 5	2,5	M6x12	8	8
CDD15	20	20	12	3,1 2,0	67	60	53	26	28	7	28	10,5	M32x1,5	31	35	62	53	20	37	30	29 5	4,2	M8x12	10	10
CDD25	25	25	16	4,9 2,9	82	75	65	33	35	7	35	13,5	M40x1,5	39	43	72	65	25	44	35	36 5	5,2	M10x15	11	13
CDD40	32	32	20	8,0 4,9	94	84	72	42	44	10	44	15,5	M50x1,5	44	48	79	72	28	54	45	45 5	4,2	M12x15	13	17