

Auto-coupler cylinders

Table of content



www.quiri.com

AA - 4V - H	Auto-coupler cylinder 4 channels	103
AA - 5V - H	Auto-coupler cylinder 5 channels	104
AA - 6V - H	Auto-coupler cylinder 6 channels	105

Auto-coupler cylinders

Description Principle of operation

Description

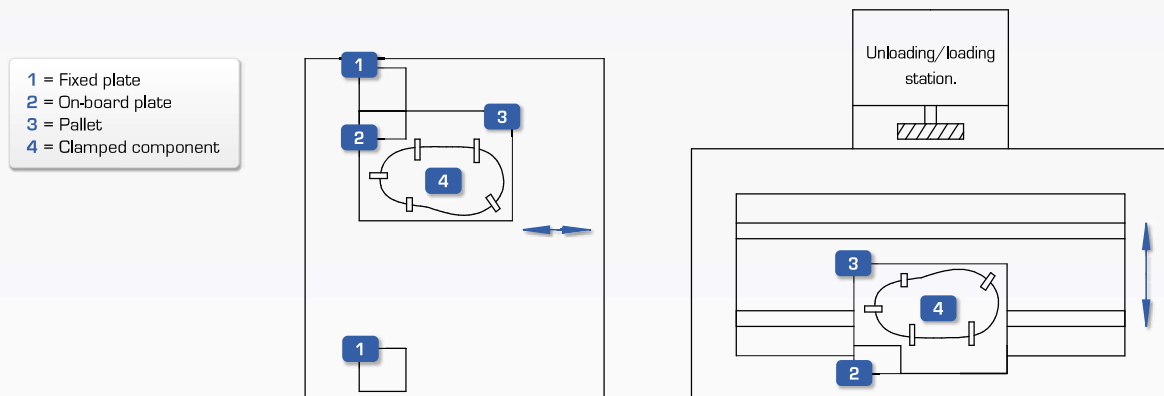
The automatic coupling system allows automatic connection and disconnection to the pressure source of cylinders on board a pallet. These couplings are in particular found in palletised systems using **T-Lock®** or **R-Lock®** type cylinders.

Application

Example : The pendular assembly

Component is fixed onto the pallette by **T-Lock®** and **R-Lock®** cylinders : Clamping is maintain without pressure. Once the component is machined, the pallet returns to the loading/unloading station :

- lateral coupling : the pallet is connected to the hydraulic plant
- release
- locating an unfinished (or semi-finished) component in place
- clamping and check
- uncoupling : the pallet returns towards the pin



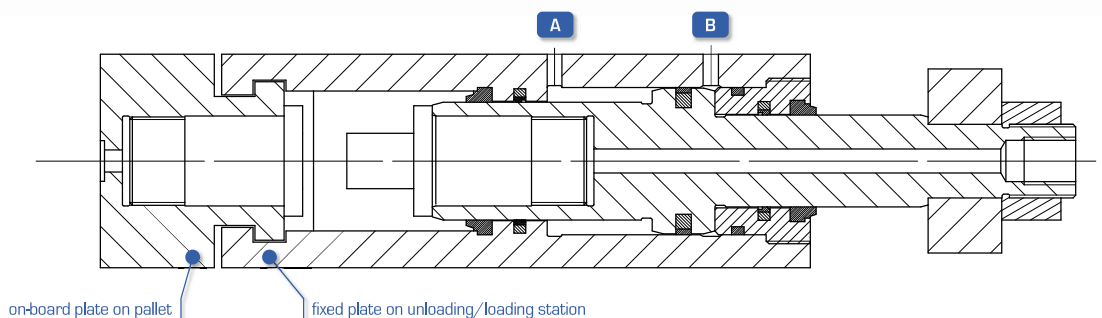
Principle of operation

Coupling

- The on-board plate 2 engages laterally into the fixed plate 1 : position detection.
- **Supply to B** : Male couplings are connected to female couplings
- Cylinders are connected to the pressure source.

Uncoupling

- **Supply to A** : Male couplings return to their initial position.



on-board plate on pallet fixed plate on unloading/loading station

Auto-coupler cylinder : AA - 4V - H

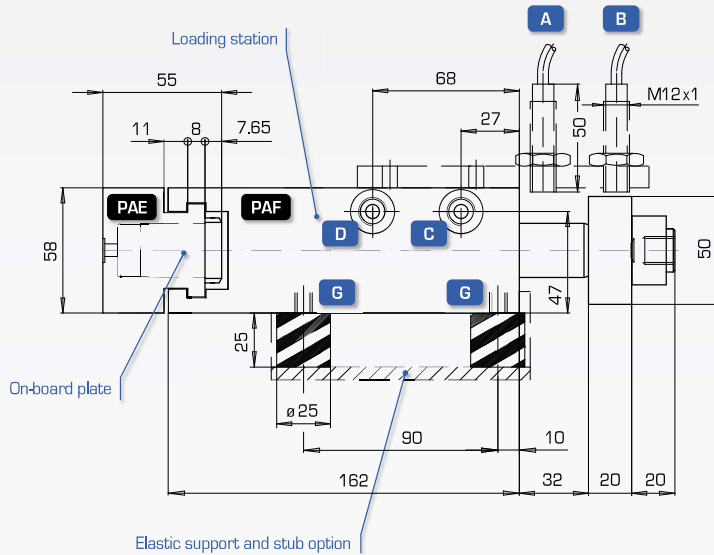
Automatic - 4 channels
Dimensions



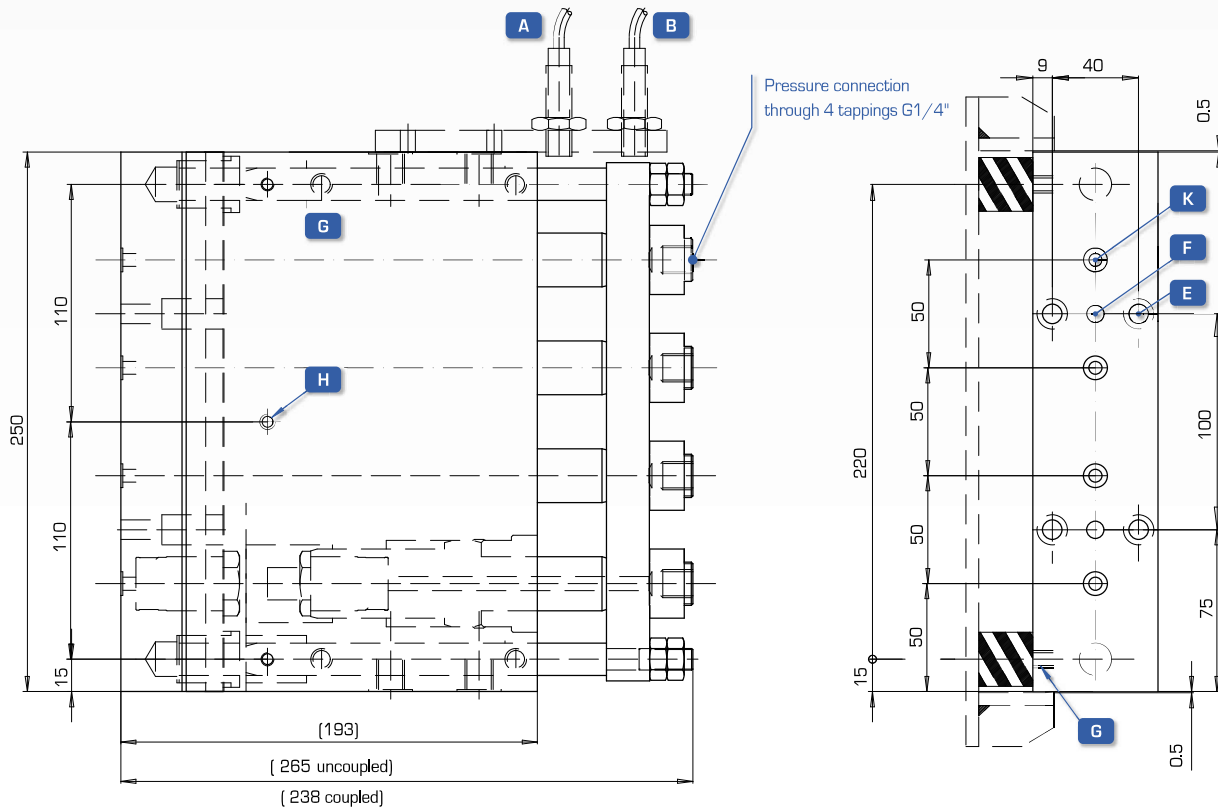
www.quiri.com

Options

- swivelling protective cover
- all options on request
- elastic support and stub



Ident.	Description
A B	Inductive position sensors A : coupled B : uncoupled
C D	Two fixing options : - lateral - above Coupling supply port G 1/4" Uncoupling supply port G 1/4"
E	4 holes ø 9 mm
F	2 centring device ø 8 H7 depth 10 mm
G	4 x M8 depth 12 mm - plate fixing
H	3 x M6 depth 10 mm - swivel slope
K	Pallet supply : O-ring ø 8 mm x 1,5



Auto-coupler systems

