

Accessories for swing clamps



www.quiri.com

Table of content

P5	Clamping arms for P5 swing clamps	068
BC	Short clamping arms	069
BM	Medium clamping arms	070
BL	Long clamping arms	071
E et R	Clamping arm fixing accessories	072
EMB	Fixing accessories - Ends of rod details	073

Clamping arms for P5 swing clamps

Description

The arms for P5 swing clamps are available as standard in one length : short with indexing. We make special arms on request.

Clamping force decreases as the length of arms increase : for details see graphs in sheets for the various versions of the P5 swing clamps (pages 47 to 51).

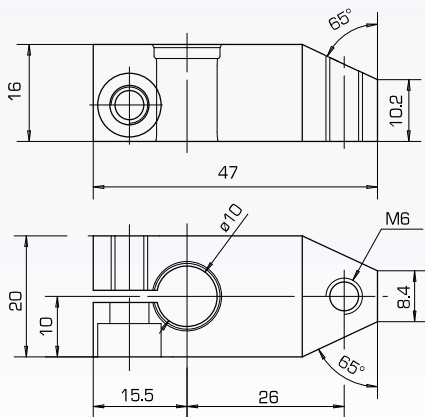
These arms are treated against corrosion and can be oriented through 360°.

STANDARD SHORT ARM

Max using pressure for cylinder with arm B5 : 250 bar

Description

Standard short arm 26 mm : **B5 26**
Order code : **811 268/000**

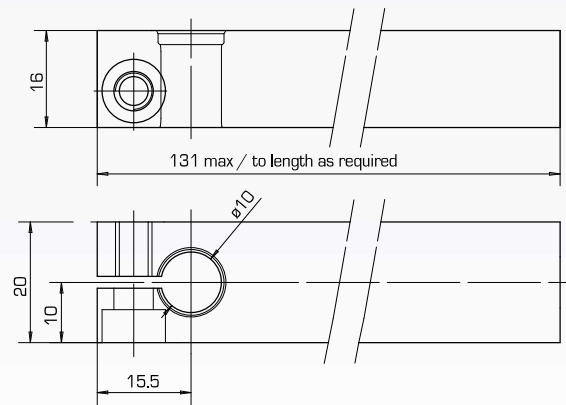


CUSTOM ARMS

Max using pressure for cylinder as shown in graphs

Description

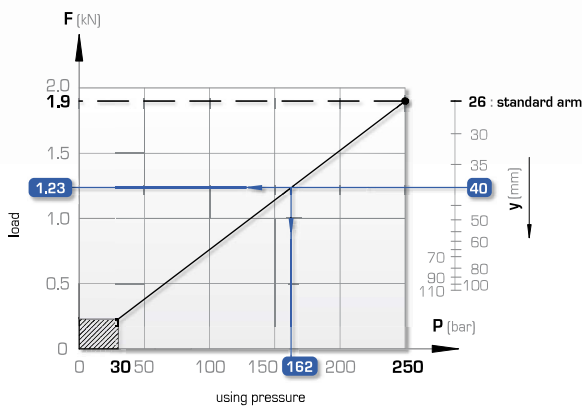
Long arm on request : **B5 _**
Order code : **Specific**



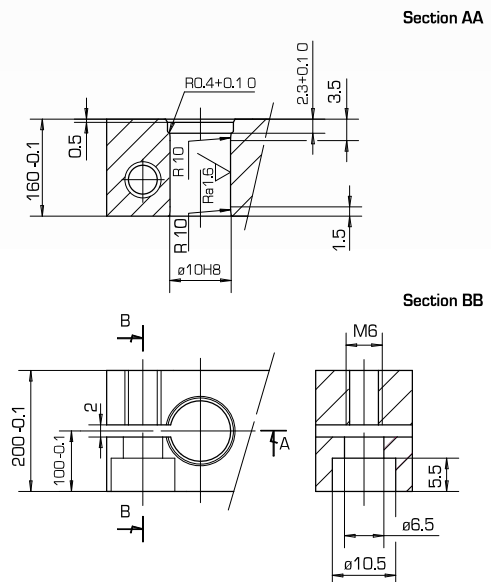
Graph :

Actual force applied at clamping point taking input/output yield into account.

Example : If $y = 40$ mm, $F_{maxi} = 1,23$ kN at 162 bar



Details of the special arm machining



Short clamping arm : BC

For swing clamp size : 11 - 12 - 21 - 31 - 41

Description

Available as standard in three different versions :

- with chamfers
- with chamfers and indexing
- without chamfer, with indexing.

Characteristics

- can be oriented through 360°
- treated against corrosion
- material : 2C45
- maximum using pressure : 250 bar

Note

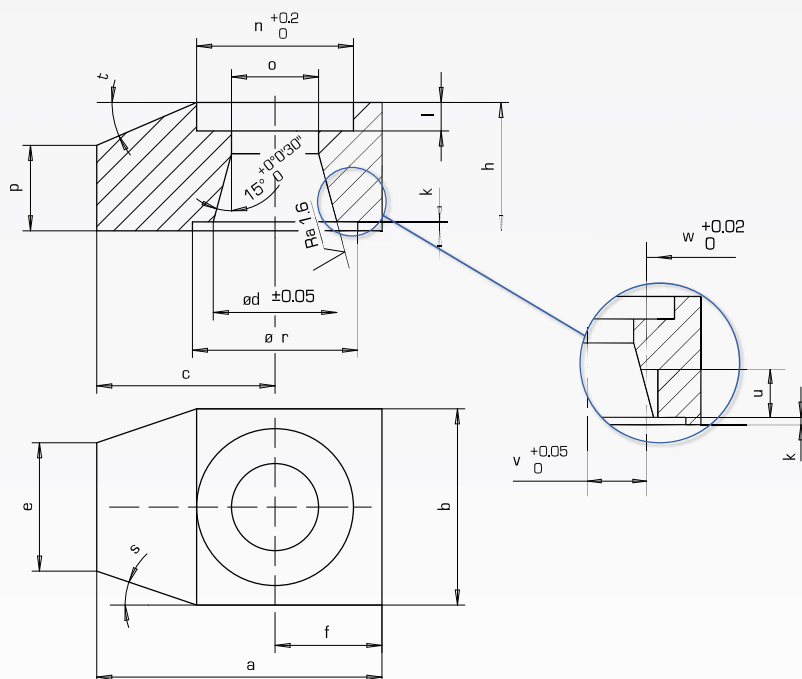
The clamping force decreases as the length of arms increases (for details, see tables page 21).

Option

Special arms made on request.

Restrain the rod when tightening the screw .

(see [figure 1](#) page 44)



Tapping	Chamfer	Indexing	Type	Order code	Dimensions																		
					a	b	c	d	e	f	h	k	l	n	o	p	r	s	t	u	v	w	
					mm	mm	mm	mm	mm	mm	mm	mm	mm	mm	mm	mm	°	°	mm	mm			
NO	YES	NO	BC 11	811 159/000	40	30	25	17.46	18	15	17	1	3	23	12.2	12	26	25	25	-	-	-	
NO	YES	YES	BC 11 X	811 159/050	40	30	25	17.46	18	15	17	1	3	23	12.2	12	26	25	25	6.3	7.8	r1.5	
NO	NO	YES	BC 11 X N	811 159/150	40	30	25	17.46	-	15	17	1	3	23	12.2	-	26	-	-	6.3	7.8	r1.5	
NON	OUI	NON	BC 12	811 309/000	49	34	32	19.46	20	17	19	1	5	25	14.2	14	28	25	25	-	-	-	
NON	OUI	OUI	BC 12 X	811 309/050	49	34	32	19.46	20	17	19	1	5	25	14.2	14	28	25	25	7.3	8.8	r1.5	
NON	NON	OUI	BC 12 X N	811 309/150	49	34	32	19.46	-	17	19	1	5	25	14.2	-	28	-	-	7.3	8.8	r1.5	
NO	YES	NO	BC 21	811 160/000	55	40	35	24.46	23	20	23	1	4	31	16.2	16.5	34	30	30	-	-	-	
NO	YES	YES	BC 21 X	811 160/050	55	40	35	24.46	23	20	23	1	4	31	16.2	16.5	34	30	30	10.4	10.25	r1.5	
NO	NO	YES	BC 21 X N	811 160/150	55	40	35	24.46	-	20	23	1	4	31	16.2	-	34	-	-	-	10.4	10.25	r1.5
NO	YES	NO	BC 31	811 163/000	72	55	44.5	35.46	30	27.5	30	1	5	41	24.5	20	45	30	30	-	-	-	
NO	YES	YES	BC 31 X	811 163/050	72	55	44.5	35.46	30	27.5	30	1	5	41	24.5	20	45	30	30	17	14.5	r2	
NO	NO	YES	BC 31 X N	811 163/150	72	55	44.5	35.46	-	27.5	30	1	5	41	24.5	-	45	-	-	17	14.5	r2	
NO	YES	NO	BC 41	811 161/000	85	70	50	40.93	36	35	33	2	6	51	30.5	20	52	45	45	-	-	-	
NO	YES	YES	BC 41 X	811 161/050	85	70	50	40.93	36	35	33	2	6	51	30.5	20	52	45	45	18	17.5	r2	
NO	NO	YES	BC 41 X N	811 161/150	85	70	50	40.93	-	35	33	2	6	51	30.5	-	52	-	-	18	17.5	r2	

Medium clamping arm : **BM**

For swing clamp size : **11 - 12 - 21 - 31 - 41**

Description

- Available as standard in three different versions :
- with tappings and chamfers, without indexing
 - with tappings, chamfers and indexing
 - with indexing, without tapping or chamfer

Characteristics

- can be oriented through 360°
- treated against corrosion
- material : 2C45
- maximum using pressure : 250 bar

Note

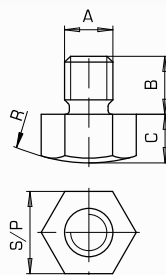
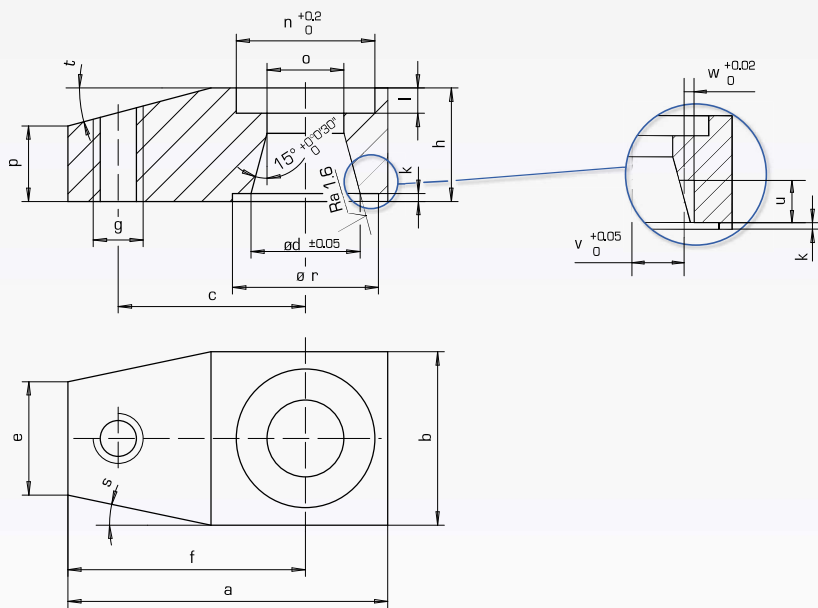
The clamping force decreases as the length of arms increases (for details, see tables page 21).

Option

Special arms made on request.

Restrain the rod when tightening the screw .

(see [figure 1](#) page 44)



Type	Order code	Dimensions				
		A	B	C	R	S/P
VB 15.8	811 261/000	M8	10	10	20	13
VB 40.12	811 202/000	M12	12	10	45	19
VB 65.16	811 203/000	M16	20	10	60	24
VB 100.20	811 204/000	M20	25	10	60	30

Tapping	Chamfer	Indexing	Type	Order code	Dimensions																			
					a	b	c	d	e	f	g	h	k	l	n	o	p	r	s	t	u	v	w	
YES	YES	NO	BM 11	811 153/000	55	30	32	17.46	20	40	M8	17	1	3	23	12.2	15.5	26	12.5	6	-	-	-	
YES	YES	YES	BM 11 X	811 153/050	55	30	32	17.46	20	40	M8	17	1	3	23	12.2	15.5	26	12.5	6	6.3	7.8	r1.5	
NO	NO	YES	BM 11 X N	811 153/150	55	30	-	17.46	-	40	-	17	1	3	23	12.2	-	26	-	-	6.3	7.8	r1.5	
OUI	OUI	NON	BM 12	811 309/000	72	34	45	19.46	22	55	M8	19	1	5	25	14.2	17.5	28	12.5	6	-	-	-	
OUI	OUI	OUI	BM 12 X	811 309/050	72	34	45	19.46	22	55	M8	19	1	5	25	14.2	17.5	28	12.5	6	7.3	8.8	r1.5	
NON	NON	OUI	BM 12 X N	811 309/150	72	34	-	19.46	-	55	-	19	1	5	25	14.2	-	28	-	-	7.3	8.8	r1.5	
YES	YES	NO	BM 21	811 154/000	85	40	50	24.46	21	65	M12	23	1	4	31	16.2	21.5	34	25	10	-	-	-	
YES	YES	YES	BM 21 X	811 154/050	85	40	50	24.46	21	65	M12	23	1	4	31	16.2	21.5	34	25	10	10.4	10.25	r1.5	
NO	NO	YES	BM 21 X N	811 154/150	85	40	-	24.46	-	65	-	23	1	4	31	16.2	-	34	-	-	-	10.4	10.25	r1.5
YES	YES	NO	BM 31	811 164/000	108	55	65	35.46	35	80.5	M16	30	1	5	41	24.5	25	45	15	12.5	-	-	-	
YES	YES	YES	BM 31 X	811 164/050	108	55	65	35.46	35	80.5	M16	30	1	5	41	24.5	25	45	15	12.5	17	14.5	r2	
NO	NO	YES	BM 31 X N	811 164/150	108	55	-	35.46	-	80.5	-	30	1	5	41	24.5	-	45	-	-	17	14.5	r2	
YES	YES	NO	BM 41	811 155/000	125	70	70	40.93	43	90	M20	33	2	6	51	30.5	30.5	52	20	10	-	-	-	
YES	YES	YES	BM 41 X	811 155/050	125	70	70	40.93	43	90	M20	33	2	6	51	30.5	30.5	52	20	10	18	17.5	r2	
NO	NO	YES	BM 41 X N	811 155/150	125	70	-	40.93	-	90	-	33	2	6	51	30.5	-	52	-	-	18	17.5	r2	

Long clamping arm : BL

For swing clamp size : 11 - 12 - 21 - 31 - 41



www.quiri.com

Description

- Available as standard in three different versions :
- with tappings and chamfers, without indexing
 - with tappings, chamfers and indexing
 - with indexing, without tapping or chamfer

Characteristics

- can be oriented through 360°
- treated against corrosion
- material : 2C45
- maximum using pressure : 250 bar

Note

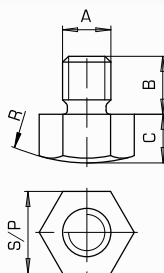
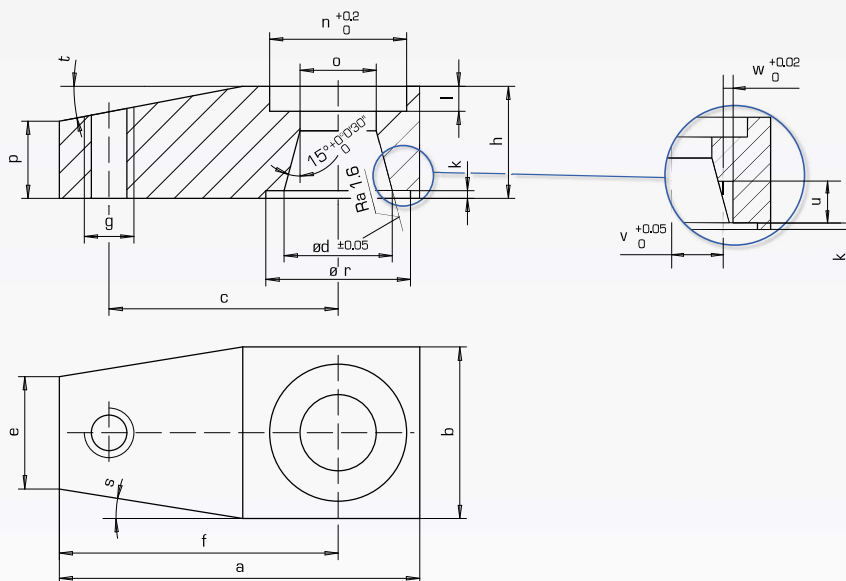
The clamping force decreases as the length of arms increases (for details, see tables page 21).

Option

Special arms made on request.

Restrain the rod when tightening the screw.

(see figure 1 page 44)



Type	Order code	Dimensions				
		A	B	C	R	S/P
VB 15.8	811 261/000	M8	10	10	20	13
VB 40.12	811 202/000	M12	12	10	45	19
VB 65.16	811 203/000	M16	20	10	60	24
VB 100.20	811 204/000	M20	25	10	60	30

Tapping	Chamfer	Indexing	Type	Order code	Dimensions																		
					a	b	c	d	e	f	g	h	k	l	n	o	p	r	s	t	u	v	w
					mm	mm	mm	mm	mm	mm		mm	mm	mm	mm	mm	mm	°	°	mm	mm		
YES	YES	NO	BL 11	811 156/000	68	30	45	17.46	21	53	M8	17	1	3	23	12.2	13.5	26	7.5	7.5	-	-	-
YES	YES	YES	BL 11 X	811 156/050	68	30	45	17.46	21	53	M8	17	1	3	23	12.2	13.5	26	7.5	7.5	6.3	7.8	r1.5
NO	NO	YES	BL 11 X N	811 156/150	68	30	-	17.46	-	53	-	17	1	3	23	12.2	-	26	-	-	6.3	7.8	r1.5
OUI	OUI	NON	BL 12	811 311/000	91	34	64	19.46	22	74	M8	19	1	5	25	14.2	17.5	28	12.5	6	-	-	-
OUI	OUI	OUI	BL 12 X	811 311/050	91	34	64	19.46	22	74	M8	19	1	5	25	14.2	17.5	28	12.5	6	7.3	8.8	r1.5
NON	NON	OUI	BL 12 X N	811 311/150	91	34	-	19.46	-	74	-	19	1	5	25	14.2	-	28	-	-	7.3	8.8	r1.5
YES	YES	NO	BL 21	811 157/000	110	40	75	24.46	24	90	M12	23	1	4	31	16.2	17	34	10	10	-	-	-
YES	YES	YES	BL 21 X	811 157/050	110	40	75	24.46	24	90	M12	23	1	4	31	16.2	17	34	10	10	10.4	10.25	r1.5
NO	NO	YES	BL 21 X N	811 157/150	110	40	-	24.46	-	90	-	23	1	4	31	16.2	-	34	-	-	10.4	10.25	r1.5
YES	YES	NO	BL 31	811 165/000	134	55	90	35.46	40	106.5	M16	30	1	5	41	24.5	22	45	7	10	-	-	-
YES	YES	YES	BL 31 X	811 165/050	134	55	90	35.46	40	106.5	M16	30	1	5	41	24.5	22	45	7	10	17	14.5	r2
NO	NO	YES	BL 31 X N	811 165/150	134	55	-	35.46	-	106.5	-	30	1	5	41	24.5	-	45	-	-	17	14.5	r2
YES	YES	NO	BL 41	811 158/000	155	70	100	40.93	50	120	M20	33	2	6	51	30.5	27	52	8.5	8.5	-	-	-
YES	YES	YES	BL 41 X	811 158/050	155	70	100	40.93	50	120	M20	33	2	6	51	30.5	27	52	8.5	8.5	18	17.5	r2
NO	NO	YES	BL 41 X N	811 158/150	155	70	-	40.93	-	120	-	33	2	6	51	30.5	-	52	-	-	18	17.5	r2

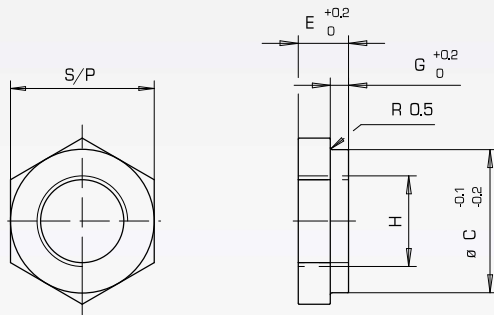
Accessories for swing clamps

Fixing accessories : E and R

Rod nuts and lock-washer
for fixing of arm onto the rod

■ The arm lock nut and lock-washer are supplied with the cylinder. ■

■ Nut for cylinder type P11, P21 and P26



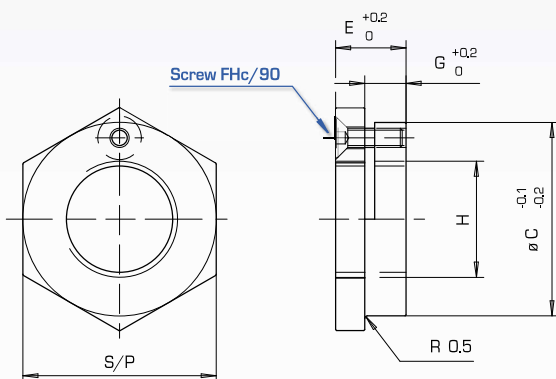
Type	Order code	S/P	C	E	G	Dimensions		Screw FHC/90
						H	N Mean tightening torque	
E 11	191 056/007	22	22	5,9	1,9	M12 x 1,5	15	-
E 12	191 050/007	24	24	7	3	M14 x 1,5	20	-
E 21	191 057/007	30	30	7,3	2,8	M16 x 1,5	40	-

IMPORTANT NOTE :

Restrain the rod when tightening the screw.

See [figure 1](#) pages 20 and 44

■ Nut for cylinder type P31 and P41



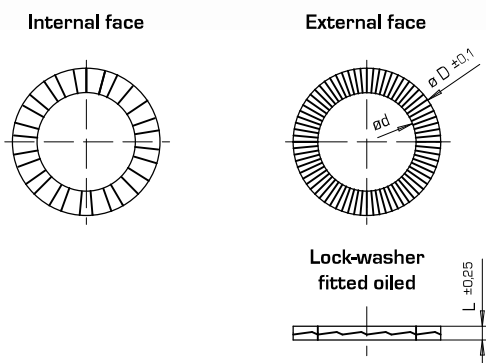
Type	Order code	S/P	C	E	G	Dimensions		Screw FHC/90
						H	N Mean tightening torque	
E 31	191 077/009	40	40	12,5	9	M24 x 1,5	125	M4 x 12
E 41	191 093/010	46	50	15	10,5	M30 x 1,5	230	M5 x 12

IMPORTANT NOTE :

Restrain the rod when tightening the screw.

See [figure 1](#) pages 20 and 44

■ Lock-washer for cylinder type P11, P21 et P26



Type	Order code	Dimensions		
		D	d	L
R 11	AQ 1406	19,5	13	2,6
R 12	AQ 1407	23	14,5	3,7
R 21	AQ 1408	24,5	17	3,7

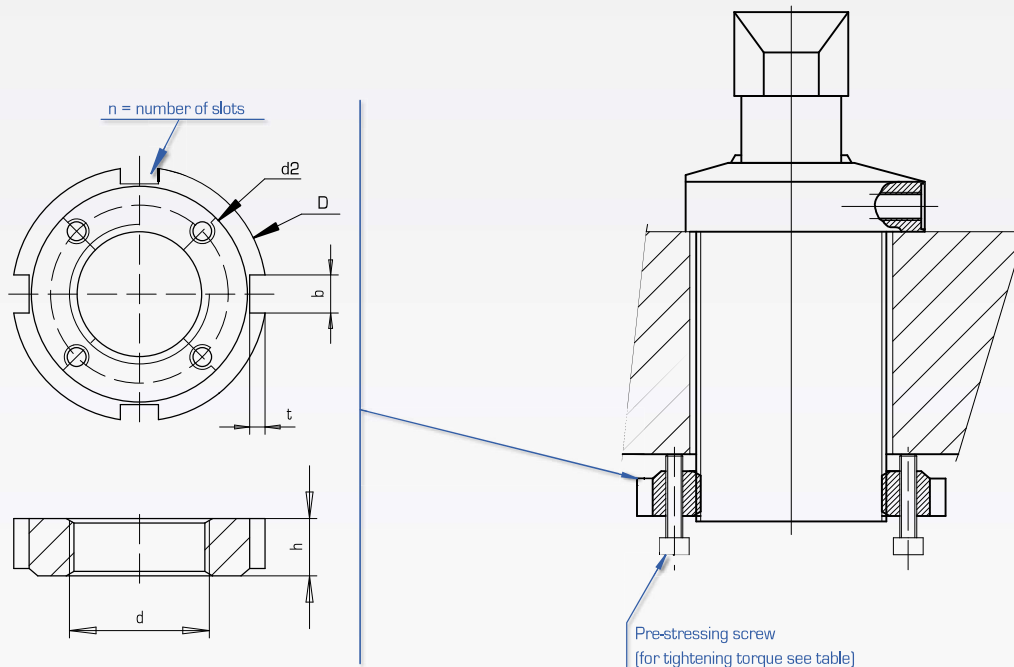
Fixing accessories : EMB

Nut for threaded swing clamps

P11 - P21 - P31 - P41

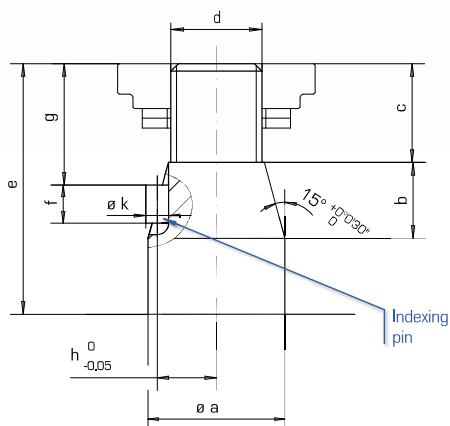
Special nut for threader swing clamps

Recommended fitting to prevent loosening of nut



Type	Order code	Type of cylinder	Tapping d	Dimensions							Screw	Mean tightening torque
				D	d2	h	b	t	n			
EMB 3615	811 269/000	P11	M36 x 1.5	68	60	11	8	3.5	4	M6	5	
EMB 5215	811 270/000	P21	M52 x 1.5	92	82	13	10	4	4	M8	13	
EMB 7220	811 271/000	P31	M72 x 2	122	112	14	10	4	4	M12	34	
EMB 8520	811 272/000	P41	M85 x 2	142	132	16	10	4	4	M14	62	

Details of ends of rod for swing clamps



Type	Order code Indexing pin	Dimensions								
		a	b	c	d	e	f	g	h	k
P11	A 94 028	18	10	13	M12 x 1.5	33	5	16	7.8	3
P21 / P26	A 94 028	25	14	16	M16 x 1.5	45	5	19	10.25	3
P31	A 94 026	36	20	18	M24 x 1.5	53	8	21	14.5	4
P41	A 94 026	42	22	20	M30 x 1.5	57	8	23	17.5	4