



**D-M-E**  
 Solvent cleaner / Formenreiniger  
**C 125 GB** **C 125 GB**

C 125 is a solvent cleaner to remove oils and greases, resins, plastic sprays like PVC, PA, PI, PU, and acrylics. It is suitable for cleaning of all types of plastic parts. It is also suitable for cleaning of injection moulding machines, hot dies, and other plastic parts. It is also suitable for cleaning of parts which have to be cleaned before painting. The product is well biodegradable.

Use before use only at room temperature.

Bevor Gebrauch schütteln. Bei Raumtemperatur anwenden.

Abwachen! Nicht einatmen! Nicht in die Augen fallen lassen! Nicht auf offene Flamme oder Feuer geben! Nicht in Wasser geben! Nicht in Abwasser geben! Nicht in die Kanalisation geben! Nicht in die Umwelt abgeben! Nicht in die Luft abgeben! Nicht in die Erde abgeben! Nicht in die Luft abgeben! Nicht in die Erde abgeben!

**D-M-E Europe C.V.B.A.**  
 Industrieweg 10, Herent 31  
 Belgium - Belgium 1181 LUMMA  
 Tel. +32 (0)15 21 60 11  
 Fax +32 (0)15 21 62 35

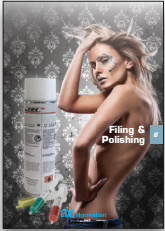
# Filing & Polishing

6



**EOC Normalien**





## Filing & Polishing

Info .....	2
Abrasives.....	3
Diamond Foils .....	7
Kwik-Lap.....	8
Polishing Paste .....	9
Diamond Paste.....	11
Orbi-Tip.....	14
Diprofil .....	18
Abrasive Tips.....	20
Felt Sticks.....	22
Lapping & Polishing Bars .....	23
Sprays .....	24



15/06/2012



Info

Comparison table

Grain size	µm
<b>100</b>	200 - 250
<b>150</b>	150 - 200
<b>200</b>	100 - 150
<b>300</b>	40 - 60
<b>400</b>	30 - 40
<b>600</b>	20 - 30
<b>1000</b>	8 - 10
<b>2000</b>	3 - 8
<b>3000</b>	2 - 6
<b>4000</b>	2 - 4
<b>6000</b>	0 - 3
<b>8000</b>	0 - 1

RO 601... - RO 605... - RO 801...

Abrasive belt rolls



Features:

- Abrasive material: Corundum
- Grain support: RO 601 and RO 605 flexible linen fabric. Ro 801 paper
- Length: 50 m per roll

REF	Grain	Width	€
<b>RO 801 800</b>	800	25	
<b>RO 801 1000</b>	1000	25	
<b>RO 801 1200</b>	1200	25	
<b>RO 801 1500</b>	1500	25	

REF	Grain	Width	€
<b>RO 601 40</b>	40	25	
<b>RO 601 50</b>	50	25	
<b>RO 601 60</b>	60	25	
<b>RO 601 80</b>	80	25	
<b>RO 601 100</b>	100	25	
<b>RO 601 120</b>	120	25	
<b>RO 601 150</b>	150	25	
<b>RO 601 180</b>	180	25	
<b>RO 601 220</b>	220	25	
<b>RO 601 240</b>	240	25	
<b>RO 601 280</b>	280	25	
<b>RO 601 320</b>	320	25	
<b>RO 601 400</b>	400	25	
<b>RO 601 500</b>	500	25	
<b>RO 601 600</b>	600	25	

REF	Grain	Width	€
<b>RO 605 40</b>	40	50	
<b>RO 605 50</b>	50	50	
<b>RO 605 60</b>	60	50	
<b>RO 605 80</b>	80	50	
<b>RO 605 100</b>	100	50	
<b>RO 605 120</b>	120	50	
<b>RO 605 150</b>	150	50	
<b>RO 605 180</b>	180	50	
<b>RO 605 220</b>	220	50	
<b>RO 605 240</b>	240	50	
<b>RO 605 280</b>	280	50	
<b>RO 605 320</b>	320	50	
<b>RO 605 400</b>	400	50	
<b>RO 605 500</b>	500	50	
<b>RO 605 600</b>	600	50	

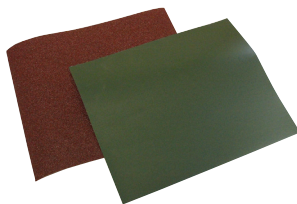


Abrasive cloth, abrasive paper

BO 602.... - BO 802...

Features:

- Width x Length: 230 x 280 mm
- Abrasive material: Corundum
- Grain support: BO 602 flexible linen fabric. Bo 802 paper



REF	Grain		€
BO 602 40	40	50	
BO 602 50	50	50	
BO 602 60	60	50	
BO 602 80	80	50	
BO 602 100	100	50	
BO 602 120	120	50	
BO 602 150	150	50	
BO 602 180	180	50	
BO 602 220	220	50	
BO 602 240	240	50	
BO 602 280	280	50	
BO 602 320	320	50	
BO 602 400	400	50	
BO 602 500	500	50	
BO 602 600	600	50	

REF	Grain		€
BO 802 800	800	50	
BO 802 1000	1000	50	
BO 802 1200	1200	50	
BO 802 1500	1500	50	

6

Abrasive belt dispenser Poli-Strip

PS 600

Features:

- Abrasive material: Corundum
  - Grain support: Natronpaper
- Includes:
- Composed of 1 roll of PS 6 and PS 10 with grain 150, 180, 240, 320, 400 and 600



REF	€
PS 600	



## PS 1500

Abrasive belt dispenser Poli-Strip



**Features:**

- Abrasive material: Corundum
- Grain support: Natronpaper

**Includes:**

- Composed of 1 roll of PS 15 with grain 150, 180, 240, 320, 400 and 600

REF	€
<b>PS 1500</b>	

## PS ...

Abrasive belt dispenser Poli-Strip, spare rolls

REF	Grain	Width	l	€
<b>PS 6 150</b>	150	6	25 m	
<b>PS 6 180</b>	180	6	25 m	
<b>PS 6 240</b>	240	6	25 m	
<b>PS 6 320</b>	320	6	25 m	
<b>PS 6 400</b>	400	6	25 m	
<b>PS 6 600</b>	600	6	25 m	
<b>PS 10 150</b>	150	10	25 m	
<b>PS 10 180</b>	180	10	25 m	
<b>PS 10 240</b>	240	10	25 m	
<b>PS 10 320</b>	320	10	25 m	
<b>PS 10 400</b>	400	10	25 m	
<b>PS 10 600</b>	600	10	25 m	
<b>PS 15 150</b>	150	15	25 m	
<b>PS 15 180</b>	180	15	25 m	
<b>PS 15 240</b>	240	15	25 m	
<b>PS 15 320</b>	320	15	25 m	
<b>PS 15 400</b>	400	15	25 m	
<b>PS 15 600</b>	600	15	25 m	

## H 500

Abrasive belt holder, handle



**Features:**

- Mat.: Plastics with pressure rotating clamping
- l = 96 mm

REF	€
<b>H 500</b>	



## Abrasive belt holder, handle

PS ... L - PS ... K

REF	Type	Width	l	€
<b>PS 60 K</b>	K	6	115	
<b>PS 60 L</b>	L	6	140	
<b>PS 100 K</b>	K	10	115	
<b>PS 100 L</b>	L	10	140	
<b>PS 150 K</b>	K	15	115	
<b>PS 150 L</b>	L	15	140	



## Abrasive belt and holder

BS 21

## Includes:

- Kit, composed of 21 items
- width = 6,5 mm
- 3 holders furnished with abrasive belts with grain of 120, 240 and 320 each
- 15 additional abrasive belts with grain of 120, 240, 320, always 5 of each.

REF	€
<b>BS 21</b>	



## Abrasive belt and holder

BS 36

## Includes:

- Kit, composed of 36 items
- width = 6,5 mm
- 3 holders + abrasive belts, grain 120, 240 and 320 each
- 30 additional abrasive belts, grain 120, 240, 320, always 10 of each.

REF	€
<b>BS 36</b>	



6



BS 60

Abrasive belt and holder



Includes:

- Kit, composed of 60 items
- width = 6,5 mm
- 5 holders + abrasive belts, grain 120, 240, 320, 400, 600 each
- 50 additional abrasive belts, grain 120, 240, 320, 400, 600, always 10 of each.

REF	€
<b>BS 60</b>	

BS 806

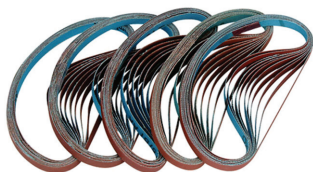
Belt holder



REF	for width		€
<b>BS 806</b>	6,5 mm	5	

BS 7 ...

Abrasive belts



REF	for width	Grain					
		120	240	320	400	600	
<b>BS 701</b>	6,5	€					10
<b>BS 702</b>	6,5		€				10
<b>BS 703</b>	6,5			€			10
<b>BS 704</b>	6,5				€		10
<b>BS 705</b>	6,5					€	10

B 0 ...

Abrasive belts



Features:

- Material: Standard corundum
- For belt sander handpiece BS 33

REF	Dimen-sions	* Grain							
		80	120	240	320	500	800	1000	
<b>B 04 *</b>	4 x 300	€	€	€	€	€			20
<b>B 06 *</b>	6 x 300	€	€	€	€	€			20
<b>B 08 *</b>	8 x 300	€	€	€	€	€	€	€	20





## Self-adhesive diamond foils, electro bonded

DF 15 ...

## Features:

- To be stuck on carriers.
- For round carriers the diameter should not be less than 8 mm
- a speed of 3000 rpm must not be exceeded.



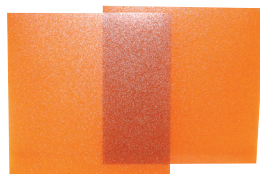
REF	Grain	Width	l	€
<b>DF 15 100</b>	100	50	100	
<b>DF 15 150</b>	150	50	100	
<b>DF 15 200</b>	200	50	100	
<b>DF 15 300</b>	300	50	100	
<b>DF 15 400</b>	400	50	100	
<b>DF 15 600</b>	600	50	100	
<b>DF 15 1000</b>	1000	50	100	
<b>DF 15 2000</b>	2000	50	100	
<b>DF 15 3000</b>	3000	50	100	
<b>DF 15 4000</b>	4000	50	100	

## Diamond foil on flexible plastic film

DF 30 ...

## Features:

- Carrier: polyamide
- Type:  
A = standard  
B = self-adhesive



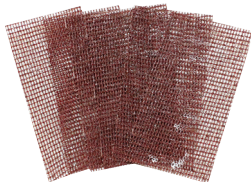
6

REF	Grain	Type	Foil color	a x b	Thickness	€
<b>DF 30 150 A</b>	150	A	orange	100 x 100	0,1	
<b>DF 30 150 B</b>	150	B	orange	100 x 100	0,1	
<b>DF 30 220 A</b>	220	A	green	100 x 100	0,1	
<b>DF 30 220 B</b>	220	B	green	100 x 100	0,1	
<b>DF 30 280 A</b>	280	A	ochre	100 x 100	0,1	
<b>DF 30 280 B</b>	280	B	ochre	100 x 100	0,1	
<b>DF 30 400 A</b>	400	A	brown	100 x 100	0,1	
<b>DF 30 400 B</b>	400	B	brown	100 x 100	0,1	
<b>DF 30 800 A</b>	800	A	dark red	100 x 100	0,1	
<b>DF 30 800 B</b>	800	B	dark red	100 x 100	0,1	
<b>DF 30 1500 A</b>	1500	A	light red	100 x 100	0,1	
<b>DF 30 1500 B</b>	1500	B	light red	100 x 100	0,1	
<b>DF 30 3000 A</b>	3000	A	dark green	100 x 100	0,1	
<b>DF 30 3000 B</b>	3000	B	dark green	100 x 100	0,1	
<b>DF 30 5000 A</b>	5000	A	light green	100 x 100	0,1	
<b>DF 30 5000 B</b>	5000	B	light green	100 x 100	0,1	
<b>DF 30 10000 A</b>	10 000	A	gold	100 x 100	0,1	
<b>DF 30 10000 B</b>	10 000	B	gold	100 x 100	0,1	




## DF 35 ...

Kwik-Lap from Ferro-Tic



**Features:**

- Nylon screen, coated with diamond grains
- for the lapping and polishing of steel, carbide, non-ferro material, glass and plastics.

REF	Grain	Width	l		€
<b>DF 35 400</b>	400	25	50	1	
<b>DF 35 600</b>	600	25	50	1	
<b>DF 35 1200</b>	1200	25	50	1	

## DF 40 ...

Kwik-Lap from Ferro-Tic, set



**Features:**

- Set of 1 piece each:  
DF 35 400, DF 35 600 and DF 35 1200

REF	€
<b>DF 40</b>	



Polishing pastes for polishing-, lapping discs & brushes

PP 01

Features:

- Abrasive composition
- Suitable for non-ferro metals, synthetic resin and horn



REF	€
PP 01	

Polishing pastes for polishing-, lapping discs & brushes

PP 02

Features:

- Brown abrasive composition
- Suitable for iron, non-ferro metals, synthetic resin and horn
- Mat.: Tripoli powder



REF		€
PP 02	1 kg	

Polishing pastes for polishing-, lapping discs & brushes

PP 03

Features:

- White abrasive composition
- Suitable for high grade steels, soft metals, non-ferro metals and plastic parts



REF		€
PP 03	1 kg	



## PP 04



Polishing pastes for polishing-, lapping discs & brushes

### Features:

- Red polishing composition
- Suitable for metal products, chromium-plated parts, argentan and high grade steels

REF		€
PP 04	1 kg	

## PP 05



Polishing pastes for polishing-, lapping discs & brushes

### Features:

- Green polishing composition
- Suitable for all metals and pressed laminates
- For the sharpening of knives

REF		€
PP 05	1 kg	

## PP 06



Polishing pastes for polishing-, lapping discs & brushes

### Features:

- Blue polishing composition
- Particulary suitable for stainless steel

REF		€
PP 06	1 kg	



Polishing pastes for polishing-, lapping discs & brushes

PP 07

Features:

- Super white polishing composition
- Suitable for plexi-glass, plastics, polyester, argentan and precious metals

REF		€
PP 07	1 kg	



Polishing pastes for polishing-, lapping discs & brushes

PP 08

Features:

- Extra-fine universal polishing paste
- Suitable for aluminium and acrylics

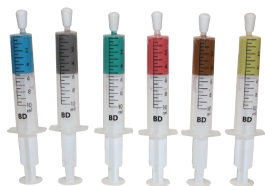
REF		€
PP 08	750 ml	






## DP 20

Diamond paste



Features:

- Natural-diamond, heavy concentration, oil-alcohol soluble base.

REF	Grain size $\mu\text{m}$	Color of paste		€
DP 20 0,25	0,25	grey	5 gr	
DP 20 1	1	blue	5 gr	
DP 20 3	3	green	5 gr	
DP 20 6	6	yellow	5 gr	
DP 20 9	9	red	5 gr	
DP 20 12	12	light brown	5 gr	
DP 20 15	15	medium brown	5 gr	
DP 20 23	23	dark brown	5 gr	
DP 20 30	30	light purple	5 gr	
DP 20 50	50	medium purple	5 gr	
DP 20 70	70	dark purple	5 gr	
DP 20 100	100	violett	5 gr	

## DP 30

Diamond paste



Features:

- Synthetic-diamond, heavy concentration, oil-alcohol soluble base.


REF	Grain size $\mu\text{m}$	Color of paste		€
DP 30 3	3	green	5 gr	
DP 30 6	6	yellow	5 gr	
DP 30 9	9	red	5 gr	
DP 30 12	12	light brown	5 gr	
DP 30 15	15	medium brown	5 gr	
DP 30 23	23	dark brown	5 gr	
DP 30 30	30	purple	5 gr	
DP 30 50	50	white	5 gr	



Diamond spray

DP 25



REF	Grain size $\mu\text{m}$	Color of paste		€
DP 25 0,1	0,1	white	150 gr	
DP 25 0,25	0,25	grey	150 gr	
DP 25 1	1	blue	150 gr	
DP 25 3	3	green	150 gr	
DP 25 6	6	yellow	150 gr	
DP 25 9	9	red	150 gr	
DP 25 12	12	light brown	150 gr	
DP 25 15	15	medium brown	150 gr	
DP 25 23	23	dark brown	150 gr	
DP 25 30	30	light purple	150 gr	

Synthetic diamond paste

DP 50

Features:

- ready for use, high concentrate and heat resistant material. Synthetic diamond material, very good price-quality ratio. Oil-alcohol soluble base.



REF	Grain size $\mu\text{m}$	Color of paste		€
DP 50 1	1	blue	10 gr	
DP 50 3	3	green	10 gr	
DP 50 6	6	yellow	10 gr	
DP 50 9	9	red	10 gr	
DP 50 12	12	light brown	10 gr	
DP 50 15	15	medium brown	10 gr	
DP 50 25	25	purple	10 gr	

6




## Pulsar ...

Diamond paste



### Features:

- Synthetic diamond, highly concentrated, water-oil-alcohol soluble base, silicon-free
- Suitable for stainless steel

REF	Grain size $\mu\text{m}$	Color of paste		€
<b>Pulsar 10 3</b>	3	green	10 gr	
<b>Pulsar 10 6</b>	6	yellow	10 gr	
<b>Pulsar 10 9</b>	9	red	10 gr	
<b>Pulsar 10 15</b>	15	brown	10 gr	
<b>Pulsar 10 25</b>	25	blue	10 gr	
<b>Pulsar 20 3</b>	3	green	20 gr	
<b>Pulsar 20 6</b>	6	yellow	20 gr	
<b>Pulsar 20 9</b>	9	red	20 gr	
<b>Pulsar 20 15</b>	15	brown	20 gr	
<b>Pulsar 20 25</b>	25	blue	20 gr	






## Diamond suspension

HP 20 ...

### Features:

- Synthetic diamond, highly concentrated:
- water soluble, high absorption of removed material.
- For surface finishing of carbide, ceramics, dies, CVD and forming tools.



REF	Grain size $\mu\text{m}$		€
HP 201	1 - 2	50 ml	
HP 202	2 - 4	50 ml	
HP 203	4 - 8	50 ml	
HP 204	8 - 15	50 ml	
HP 205	15 - 30	50 ml	
HP 206	40 - 60	50 ml	


## Diluent

F 25 / F 125

### Features:

- For the dilution of oil-alcohol soluble diamond pastes, and for cooling and increasing the free cutting of diamond and polishing stones in connection with ultrasonic work.




REF		€
F 25	0,1 l	
F 125	1,0 l	

## Lapping and polishing oil

WK 35

### Features:

- Suitable for all PT-polishing stones and diamond pastes

REF		€
WK 35	1 l	





BL 10

Cutting fluid



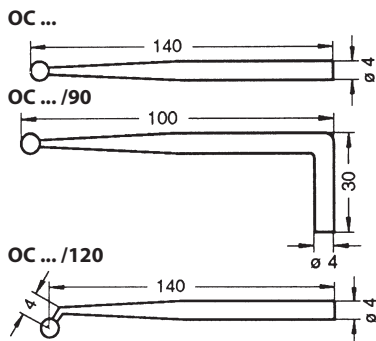
Features:

- Cleans the stone extremely well to prevent loading, lubricates the surface, leaves an excellent finish, environmentally friendly, non-toxic, biodegradable, non flammable, rust inhibiting

REF		€
BL 10	3.8 l	

OC ... - OC ... 90 - OC ... 120

Ball push rods Orbi-Cross for Orbi-Tip



Features:

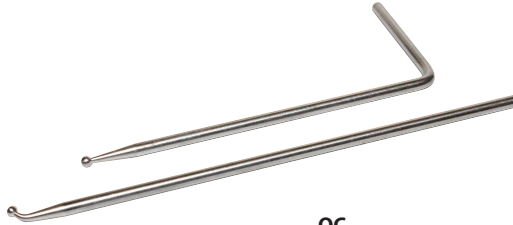
- The ball push rods OC... are equipped with a cross pin at the ball head which after latching into the split plastic ball socket of the polishing head, stops the tool from undesired twisting.
- Mat.: Steel

REF	for size	Shank-Ø	l	€
OC 24	4	3,5	140	
OC 29	6	3,5	140	
OC 39	8	4,0	140	
OC 24 90	4	3,5	100	
OC 29 90	6	3,5	100	
OC 39 90	8	4,0	100	
OC 24 120	4	3,5	140	
OC 29 120	6	3,5	140	
OC 39 120	8	4,0	140	



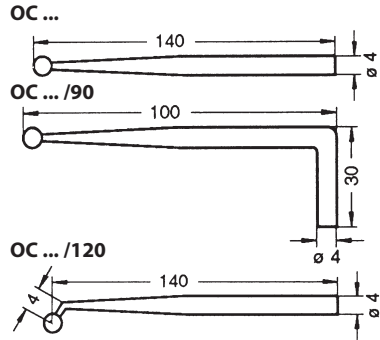
Ball push rods Orbi-Cross for Orbi-Tip

OT ... - OT ... 90 - OT ... 120



Features:

- The ball push rods OT... are without cross pin.
- Mat.: Steel

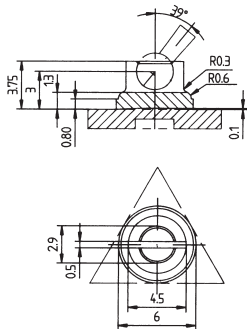


REF	for size	Shank-Ø	l	€
OT 24	4	3,5	140	
OT 29	6	3,5	140	
OT 39	8	4,0	140	
OT 24/90	4	3,5	100	
OT 29/90	6	3,5	100	
OT 39/90	8	4,0	100	
OT 24/120	4	3,5	140	
OT 29/120	6	3,5	140	
OT 39/120	8	4,0	140	



## OTP ...

### Orbi-Tip polishing / lapping bits



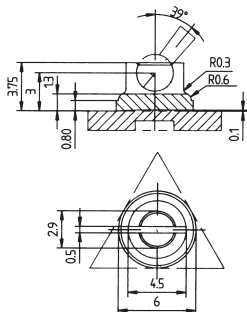
#### Features:

- The bits are available in 5 colors: green, yellow, red, brown, blue.
- When ordering lapping bits the color should match with the diamond paste!
- Mat.: Plastic

REF	size	Shape		€	€	€	€	€
OTP 41	4		50					
OTP 42	4		50					
OTP 43	4		50					
OTP 61	6		50					
OTP 62	6		50					
OTP 63	6		50					
OTP 81	8		50					
OTP 82	8		50					
OTP 83	8		50					

## OTM ...

### Orbi-Tip polishing / lapping bits



#### Features:

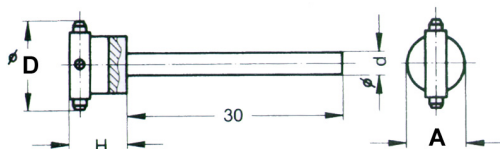
- The bits are available in 5 colors: green, yellow, red, brown, blue.
- When ordering lapping bits the color should match with the diamond paste!
- Mat.: Brass

REF	size	Shape		€	€	€	€	€
OTM 41	4		25					
OTM 42	4		25					
OTM 43	4		25					
OTM 61	6		25					
OTM 62	6		25					
OTM 63	6		25					
OTM 81	8		25					
OTM 82	8		25					
OTM 83	8		25					



## Pivot-stick

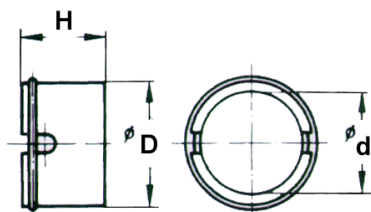
GKN ...



REF	For use with:	Ø D (mm)	Shank Ø d (mm)	H (mm)	A (mm)	€
<b>GKN 6308</b>	Type 8 rings	8	3,0	6	5	
<b>GKN 6312</b>	Type 12 rings	12	3,0	7,5	8	
<b>GKN 6320</b>	Type 20 rings	20	3,0	7,5	8	
<b>GKN 6620</b>	Type 20 rings	20	6,0	11	9	

## Diamond lapring

DMR ...



## Features:

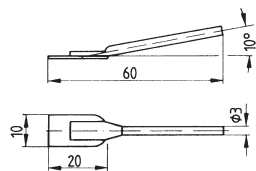
- Mat.: Diamond
- Grain size: D 151

REF	Material	Type	Ø D (mm)	Ø d (mm)	Height (mm)	Quantity	€
<b>DMR 6308</b>	Brass	8	8	6	6	10 pcs	
<b>DMR 6312</b>	Brass	12	12	10	8	20 pcs	
<b>DMR 6320</b>	Brass	20	20	17	14	10 pcs	




R 091

Carriers



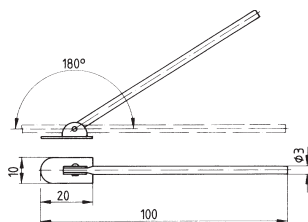
Features:

- For self-adhesive diamond foils, abrasive plates and felt plates

REF		€
R 091	10	


R 093

Carriers



Features:

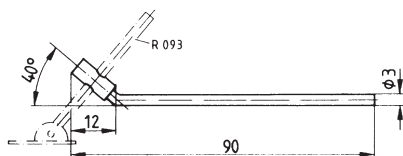
- For self-adhesive diamond foils, abrasive plates and felt plates

REF		€
R 093	3	



## Extensions

R 094



REF		€
<b>R 094</b>	2	

## Self-adhesive abrasive tips

R ...

### Features:

- Mat.: Corundum



REF	Grain	Width	l		€
<b>R 061</b>	180	10	20	100	
<b>R 062</b>	240	10	20	100	
<b>R 063</b>	280	10	20	100	
<b>R 064</b>	320	10	20	100	
<b>R 065</b>	400	10	20	100	
<b>R 066</b>	600	10	20	100	
<b>R 067</b>	800	10	20	100	
<b>R 068</b>	1000	10	20	100	
<b>R 069</b>	1200	10	20	100	

6

## Self-adhesive felt tips

R 071

### Features:

- Mat.: Felt, hardness H 3



REF	Width	l		€
<b>R 071</b>	20	10	50	




## R 095 ...

### Carriers



#### Features:

- Mat.: Plexiglass
- Self adhesive diamond foiles see page 7

REF	Width	Shank-Ø	l	Total length		€
<b>R 095 10</b>	10	3	25	100	1	
<b>R 095 15</b>	15	3	25	100	1	
<b>R 095 20</b>	20	3	25	100	1	

## RS 095 ...

### Self-adhesive abrasive plates



#### Features:

- Mat.: Corundum
- Suitable for R 095

REF	Width	l	Grain					
			180	240	320	400	600	
<b>RS 095 10</b>	10	100	€	€	€	€	€	30
<b>RS 095 15</b>	15	100	€	€	€	€	€	30
<b>RS 095 20</b>	20	100	€	€	€	€	€	30


## RF 095 ...

### Self-adhesive felt plates



#### Features:

- Mat.: Felt, hardness H 3
- Suitable for R 095

REF	Width	Thickness	l		€
<b>RF 095 10</b>	10	2	80	20	
<b>RF 095 15</b>	15	2	80	20	
<b>RF 095 20</b>	20	2	80	20	





## Felt sticks


FP ...

### Features:

- Mat.: Felt, hardness H 3
- Support for diamond pastes

**FP 0645**



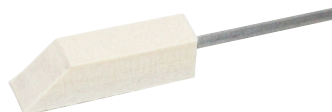
REF	Dimensions W x H x L		€
<b>FP 0645</b>	6 x 6 x 100 / 45°	20	
<b>FP 0606</b>	6 x 6 x 150	20	
<b>FP 1010</b>	10 x 10 x 150	20	
<b>FP 1313</b>	13 x 13 x 150	20	


## Felt sticks fixed

FL ...

### Features:

- Mat.: Felt, hardness H 3
- Felt sticks 45° end cut angle mounted on 3 mm shank



REF	Dimensions W x H x L			€
<b>FL 14</b>	6 x 6	x 40	1	
<b>FL 38</b>	10 x 10	x 40	1	
<b>FL 12</b>	12 x 12	x 40	1	

## Cleaning brush

RP 12

### Features:

- Mat.: goat's hair
- Total length: 180 mm
- Length of bristles: 35 mm



REF	€
<b>RP 12</b>	




LP ...

Lapping and polishing bars



Features:

- Support for diamond pastes

REF	Grain $\mu\text{m}$	Dimen- sions	l	Material		€
LP 10 5	6 - 15	$\varnothing$ 5	150	plexiglass	10	
LP 10 10	6 - 15	$\varnothing$ 10	150	plexiglass	10	
LP 10 7	6 - 15	4 x 7	150	plexiglass	10	
LP 10 15	6 - 15	4 x 15	150	plexiglass	10	
LP 10 20	6 - 15	4 x 20	150	plexiglass	10	
LP 12 7	6 - 30	5 x 7	150	laminated wood	10	
LP 12 15	6 - 30	5 x 15	150	laminated wood	10	
LP 12 20	6 - 30	5 x 20	150	laminated wood	10	
LP 14 5	6 - 9	$\varnothing$ 5	150	hardwood	10	
LP 14 10	6 - 9	$\varnothing$ 10	150	hardwood	10	
LP 14 7	6 - 9	4 x 7	150	hardwood	10	
LP 14 15	6 - 9	4 x 15	150	hardwood	10	
LP 14 20	6 - 9	4 x 20	150	hardwood	10	
LP 15 3	3 - 9	$\varnothing$ 3	150	medium wood	10	
LP 16 5	3	$\varnothing$ 5	150	soft wood	10	
LP 16 10	3	$\varnothing$ 10	150	soft wood	10	
LP 16 7	3	4 x 7	150	soft wood	10	
LP 16 15	3	4 x 15	150	soft wood	10	
LP 16 20	3	4 x 20	150	soft wood	10	



## Mold Finish comparison kit

MFK 1200

### Expanded version - 12 samples finished to SPI standards

- Eliminates errors or guesswork in achieving desired or specified finishes
- Saves time by eliminating over-polishing
- Provides a visual and numerical standard for specifying mold/part finishes



REF	€
MFK 1200	

Finish Type	Description	Roughness average Micro-inches	Roughness average Micron	Comments
<b>A1</b>	Grade 3 diamond buff	0-1	0-0,025	<ul style="list-style-type: none"> <li>• For mirror or optical finishes</li> <li>• Most time consuming</li> <li>• Steel grade important to results (Steel DME 6 and 7 recommended)</li> </ul>
<b>A2</b>	Grade 6 diamond buff	1-2	0,025-0,05	
<b>A3</b>	Grade 15 diamond buff	2-3	0,05-0,076	
<b>B1</b>	600 grit paper	2-3	0,05-0,076	<ul style="list-style-type: none"> <li>• Removes all tool and machining marks</li> <li>• Provides good mould release</li> <li>• Light reflecting finish on molded part, some sheen</li> </ul>
<b>B2</b>	400 grit paper	4-5	0,10-0,127	
<b>B3</b>	320 grit paper	9-10	0,23-0,25	
<b>C1</b>	600 stone	10-12	0,25-0,30	<ul style="list-style-type: none"> <li>• Removes all tool and machining marks</li> <li>• Provides good mold release</li> <li>• Mute finish on molded part, no sheen</li> </ul>
<b>C2</b>	400 stone	25-28	0,64-0,71	
<b>C3</b>	320 stone	38-42	0,97-1,07	
<b>D1</b>	Dry blast glass bead 11, 200 distance at 0,7Mpa; 5 secs	10-12	0,25-0,30	<ul style="list-style-type: none"> <li>• For decorative finishes</li> <li>• Often used for diecast and thermoset tooling</li> <li>• Helps hide shrink marks and other imperfections</li> <li>• Dull, non-reflecting finish on molded or cast part</li> </ul>
<b>D2</b>	Dry blast 240 oxyde, 125 mm distance at 0,7 Mpa; 5 secs	26-32	0,66-0,81	
<b>D3</b>	Dry blast 24 oxyde 150 mm distance at 0,7 Mpa; 5 secs	190-230	4,83-5,84	



C 126

Mold cleaner



Features:

- C 126 is a special cleaner to remove resin and rubber residues, plastic deposits like PVC, PA, PI, PU, and acrylates. Applications: cleaning of plastic molds, injection and spinning nozzles, removal of adhesive residues, lacquer and tar. The cleaning effect can be accelerated by heating to 80° C the parts which have to be treated.
- The product is well biodegradable.

REF	ml	€
C 126	500	

C 100

Anti-corrosion agent (crystal clear)



Features:

- C 100 provides an effective protective film on all metal parts to be protected from rust. The metal surfaces or parts are sprayed, thus protecting them permanently from oxidation. C 100 is crystal-clear and non-aggressive. It can be removed by any solvent as well as by petrol, benzene or grease solvent C 120.
- Open bulks upon request!

REF	ml	€
C 100	400	



Mold Saver anticorrosion agent

C 106

Features:

- C 106 provides high protection of ground and polished standard parts, injection molds, etc., both during storage and for local transport. The thin waxlike film which is left after spraying on is solid in ageing, does not tear or resinate and is almost impervious to vapours, gasses, steam, and salts. Due to low viscosity inaccessible parts can reliably be moistened and protected. C 106 is chlorine-, nitrite-, and barium-free and is according to VW specification PV 52.02 easily removable even after a long period in storage.
- Open bulks upon request!



REF	ml	€
C 106	500	

Grease solvent

C 120

Features:

- C 120 softens coatings of oil and grease so that they are easily removable. With heavy residues it might be necessary to spray for a second time after wiping off. Grease solvent C 120 is particularly suitable for cleaning metal parts before pouring in, glueing, varnishing or other work. It may also be used for removing marking color C 130 but is not suitable for the treatment of varnished surfaces, rubber and insulating parts.



REF	ml	€
C 120	500	

6



C 110

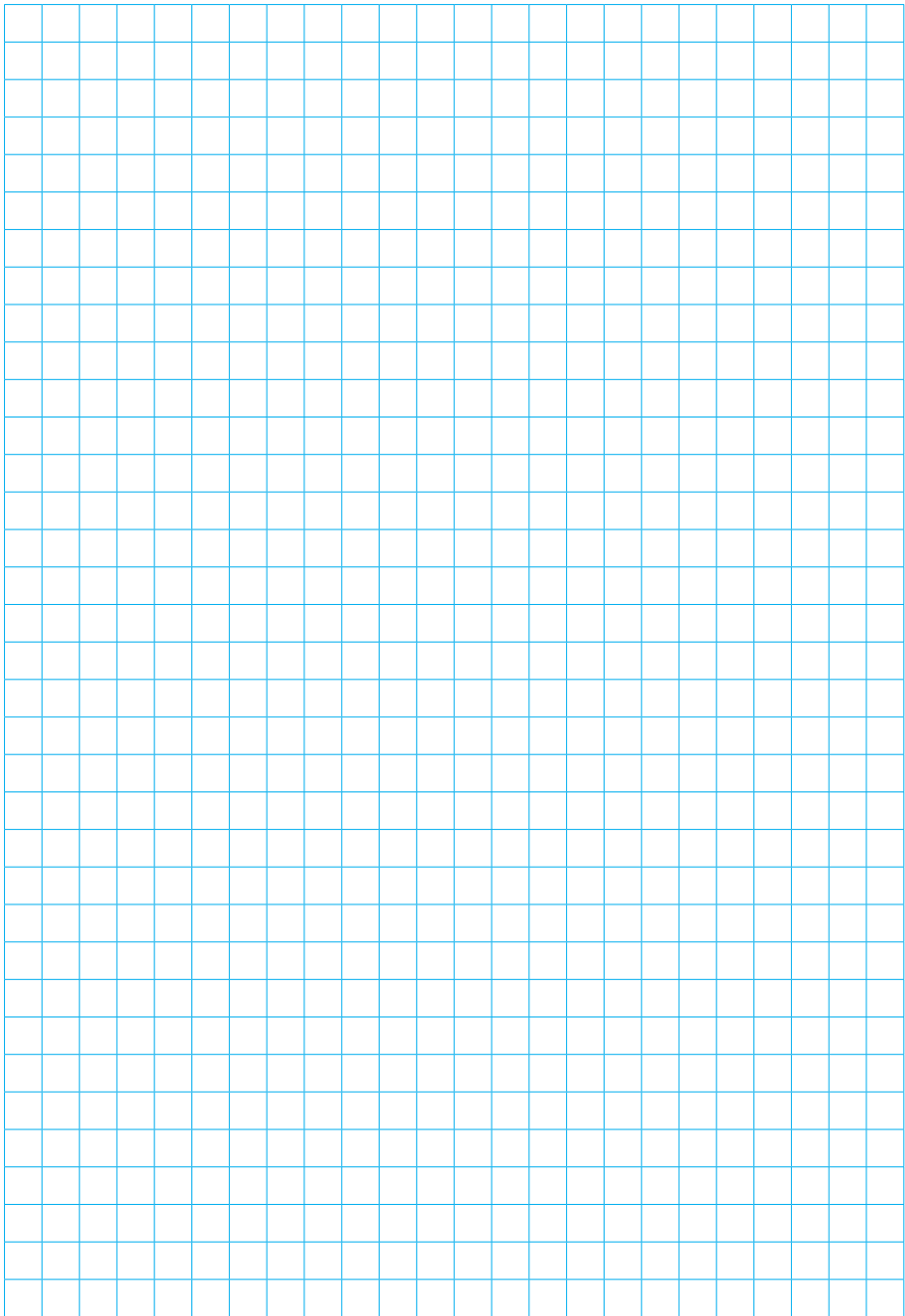
Rust-solving oil



### Features:

- C 110 loosens slightly rusted or tightly jammed screws, nuts or press joints and removes even thick films of rust on metal parts. Various additives ensure high lubricating effect and permanent rust protection.
- Eliminates squeaking.

REF	ml	€
C 110	400	



15/06/2012

