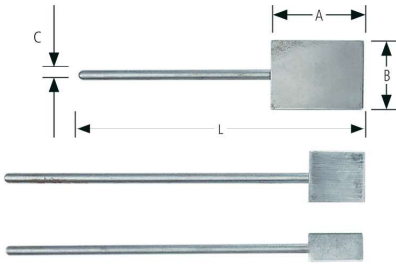
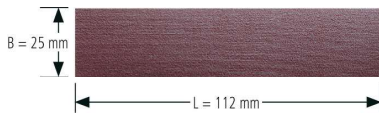


Accessories



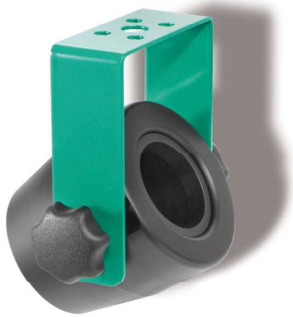
Polishing shoes

Shoe length A [mm]	Shoe width B [mm]	Total length L [mm]	Shaft C Ø [mm]	Order-number
35	25	110	4	001 974 436
20	20	140	4	001 974 437
20	11	140	4	001 974 438

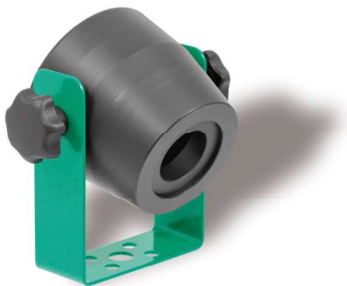


Emery strips for polishing shoes, self-adhesive (pack: 10 units)

Grit	80	120	240	400
Order no.	001 974 439	001 974 440	001 974 441	001 974 442



hanging



standing

Vario-holder V3

Brings organisation and safety to your workplace. Your high-value tools are parked drop certain on your work bench.

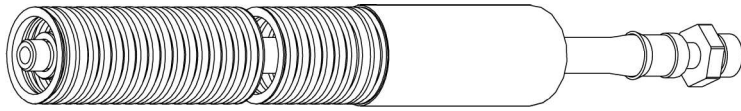
Suitable for almost all BIAx grinders thanks to the individually adjustable internal sleeves.

Suitable for:

TVD 3-100/2, T 365/2,
 TSD 385, T 3-65 S,
 SRD 3-85/2, SRD 3-85/2D,
 SVD 3-85/2, SVD 3-85/2D,
 SRH 3-85/2, SRH 3-85/2D,
 SVH 3-85/2, SVH 3-85/2D,
 SRD 3-55/2, SRD 3-55/2 S, SRD 3-55/2 KE,
 SRD 6-45/2, SRD 6-45/2 SL, SRD 3-45/2,
 SRH 6-45/2, SRH 6-45/2 SL, SRH 3-45/2,
 SRD 8-30/2, SARD 830, SBRD 830,
 SRH 8-30/2, SARH 830, SBRH 830, SVKH 630,
 SRD 8-30/2 SL, SRD 6-30/2, SRD 3-30/2,
 SRH 8-30/2 SL, SRH 6-30/2,
 SRD 8-20/2, SRD 8-20/2 SL,
 SRH 8-20/2, SRH 8-20/2 SL,
 SARD 820, SARH 820,
 SRH 10-15/2, SRH 10-12/2, SRH 8-10

Order no. 007 012 848

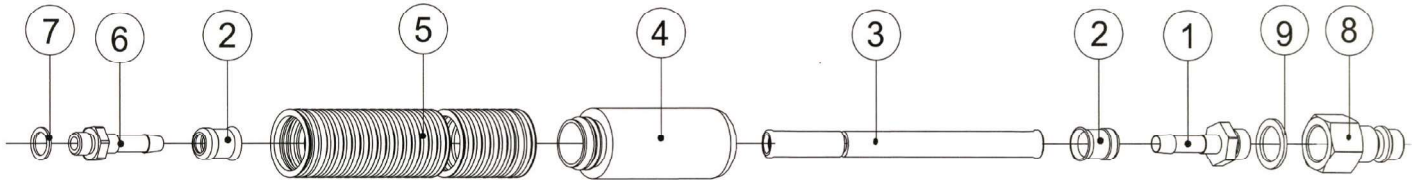
Installation possible acc. to requirements.



Hose unit

Hose unit, complete	001 366 505	001 366 528	001 366 594	001 366 595	001 366 548	001 366 549	001 366 577	001 366 578	001 366 580	001 366 576
Plug-in nipple attached (8)	001 367 711	001 367 712	001 367 711	001 367 711	001 367 711	001 367 711	001 367 711	001 367 711	001 367 712	-
Washer attached (9)	001 367 616	001 313 102	001 367 616	001 367 616	001 367 616	001 367 616	001 367 616	001 367 616	001 313 102	-
Hose plug-in sleeve (1)	001 366 207	001 366 202	001 366 207	001 366 216	001 366 207	001 366 216	001 366 207	001 366 207	001 366 202	001 366 610
Hose clamp (2)	001 372 606	001 372 610	001 369 406	001 369 408	001 372 606	001 369 408	001 372 606	001 372 606	001 372 610	001 369 408
Pressure hose (3)	001 366 357	001 366 320	001 366 357	001 366 308	001 366 357	001 366 308	001 366 357	001 366 357	001 366 320	001 366 308
Silencer (4)	003 008 026	001 365 014	-	003 008 000	-	-	003 008 023	003 008 026	001 365 014	003 008 000
Exhaust air hose (5)	001 331 142	001 331 142	-	001 331 189	001 331 161	001 331 158	001 331 177	001 331 163	001 331 142	001 331 189
External thread sleeve (6)	003 003 528	003 003 702	-	003 003 447	001 366 204	-	001 366 204	001 366 204	001 366 211	003 006 356
Washer (7)	001 312 205	001 313 103	-	-	001 312 205	-	001 312 205	001 312 205	001 313 303	001 312 202

Metre material:										
Pressure hose	001 366 356	001 366 318	001 366 356	001 366 309	001 366 356	001 366 309	001 366 356	001 366 356	001 366 318	001 366 309
Exhaust air hose	001 331 143	001 331 143	-	001 331 184	001 331 160	001 331 157	001 331 160	001 331 162	001 331 143	-
Technical data										
Length [m]	3	3	3	1,5	1,5	1,5	3	3	3	1,5
Inside diameter [mm]	7	10	7	4,5	7	4,5	7	7	10	4,5
Weight [kg]	0,5	0,7	0,24	0,11	0,21	0,1	0,4	0,4	0,7	0,11



Collets and installation wrenches



only for hand pieces



for pneumatic machines and hand pieces



Type	ZG 1	ZG 1 A	ZG 4	ZG 5	ZG 7	ZG 8
	Order no.	Order no.	Order no.	Order no.	Order no.	Order no.
Inner diameter 0,5 mm	-	-	-	001 999 871	-	-
Inner diameter 1,0 mm	-	-	001 999 957	001 999 989	001 999 868	-
Inner diameter 1,5 mm	-	-	001 999 960	001 999 988	-	-
Inner diameter 2,0 mm	001 999 932	-	001 999 959	001 999 987	001 999 867	-
Inner diameter 2,5 mm	-	-	001 999 952	001 999 986	-	-
Inner diameter 3,0 mm	001 999 999	001 999 995	001 999 991	001 999 985	001 999 982	-
Inner diameter 3,5 mm	-	-	001 999 951	-	001 999 924	-
Inner diameter 4,0 mm	001 999 998	001 999 949	001 999 961	-	001 999 973	-
Inner diameter 5,0 mm	001 999 997	-	001 999 958	-	001 999 972	-
Inner diameter 6,0 mm	001 999 996	001 999 994	001 999 990	-	001 999 981	001 999 977
Inner diameter 7,0 mm	-	-	-	-	001 999 971	-
Inner diameter 8,0 mm	-	001 999 993	-	-	001 999 980	001 999 976
Inner diameter 10,0 mm	-	001 999 992	-	-	-	001 999 975
Inner diameter 1/8"	-	-	001 999 964	001 999 983	001 999 979	-
Inner diameter 1/4"	-	-	001 999 965	-	001 999 978	-
Inner diameter 3/32"	-	-	001 999 970	001 999 984	-	-
Installation wrenches	001 365 806 + Retaining pin 002 000 069	001 365 811 + Retaining pin 002 000 070	007 899 874 (Size 9+11 in the set)	007 899 751 (Size 6+8 in the set)	007 899 746 (Size 11+14 in the set)	007 899 721 (Size 14+17 in the set)

Maintenance units



Special oil



Order no.	001 367 022	001 367 024	001 367 023	001 367 045	Order no. (1,0l) 001 365 665
Connection thread	R 1/4"	R 1/4"	R 1/4"	R 1/2"/R 3/8"	
Max. operating pressure [bar]	10	10	10	10	
Throughput at 6 bar [l/min]	550	800	500	1900	Order no. (5,0l) 001 365 605
Control range [bar]	0,5-8	0,5-10	0,5-10	0,5-8	
Weight [kg]	0,83	0,81	0,5	1,9	

For oil-free pneumatic tools

One-hand couplings



Connection thread	R 1/4"	R 3/8"	R 1/4" i	-	-	R 1/8"	R 1/4"	-	-	-
For hose width	-	-	-	7	10	4,5	4,5	4,5	7	10
Order no.	001 366 706	001 366 709	001 366 717	001 366 707	001 366 711	001 366 215	001 366 216	001 369 408	001 369 401	001 369 403

Hose plug-in sleeve



Outer thread sleeve



Connection thread	-	-	-	R 1/8"	R 1/4"	R 1/4"	R 3/8"
For hose width	4,5	7	10	7	7	10	10
Order no.	001 366 610	001 366 603	001 366 607	001 366 204	001 366 207	001 366 211	001 366 202

Nipple with male thread



Nipple with female thread



Manifold block with couplings



Connection thread	R 1/8"	R 1/4"	R 3/8"	R 1/4" i	R 3/8" i	R 3/8" i	R 1/4" i
Order no.	001 367 703	001 367 710	001 367 706	001 367 711	001 367 712	001 367 211	001 367 212

Double nipple



Reducing adapter



Sealing ring



Connection thread	R 1/4" x R 1/4"	R 3/8" x R 3/8"	R 1/4" x R 1/8"	R 3/8" x R 1/4"	R 1/2" x R 3/8"	R 1/8"	R 1/4"	R 3/8"
Order no.	001 367 101	001 367 102	001 370 901	001 370 902	001 370 903	001 312 205	001 367 616	001 313 102