

GENERAL PURPOSE MARKERS

EXCEPTIONAL FLEXIBILITY

From automotive quality control to construction, these markers offer exceptional flexibility and can be used on many different surfaces and in almost any industry.

Engineered to meet the performance needs of industrial users and applications, these markers are an economical and effective marking solution for almost any user.

	FM.120	PRO-EX®	LUMBER CRAYON 200	LUMBER CRAYON 500	OPTIMARK®	SCAN-IL® PLUS	ULTRASCAN®	TRADES-MARKER®	TRADES-MARKER® WP	CHINA-MARKER	FM.213 / FM.220 / FM.230	ZS.124 / ZS.130	ZS.224 / ZS.230	ZS.324	ZS.424
--	--------	---------	-------------------	-------------------	-----------	---------------	------------	----------------	-------------------	--------------	--------------------------	-----------------	-----------------	--------	--------

PERMANENT

Metals

Standard steel, Clean, Dry		⊙	⊙					⊙							
Standard steel, Rough	⊙	⊙	⊙	⊙				⊙		⊙					
Aluminium								⊙		⊙					
Stainless Steel								⊙		⊙					

Plastics

Clean, Dry								⊙		⊙					
------------	--	--	--	--	--	--	--	---	--	---	--	--	--	--	--

Rubber

Clean, Dry								⊙		⊙					
------------	--	--	--	--	--	--	--	---	--	---	--	--	--	--	--

Glass, Ceramic

Clean, Dry								⊙		⊙				⊙	
------------	--	--	--	--	--	--	--	---	--	---	--	--	--	---	--

Lumber / Timber

Clean, Dry	⊙	⊙	⊙	⊙				⊙		⊙		⊙			
Grade mark readers								⊙		⊙		⊙			
Rough	⊙	⊙	⊙	⊙				⊙		⊙		⊙			
Wet		⊙	⊙					⊙		⊙					⊙

Brick, Stone

Clean, Dry	⊙	⊙	⊙	⊙				⊙		⊙					
Rough															
Wet															

Cardboard, Paper

Clean, Dry	⊙	⊙	⊙	⊙				⊙		⊙					⊙
------------	---	---	---	---	--	--	--	---	--	---	--	--	--	--	---

Painted Surface

Clean, Dry								⊙		⊙					⊙
------------	--	--	--	--	--	--	--	---	--	---	--	--	--	--	---

Tile, Polished Stone

Clean, Dry		⊙						⊙		⊙			⊙	⊙	
------------	--	---	--	--	--	--	--	---	--	---	--	--	---	---	--

REMOVABLE

Metals

Standard steel, Clean, Dry										⊙		⊙			
Aluminium												⊙		⊙	
Stainless Steel										⊙		⊙			

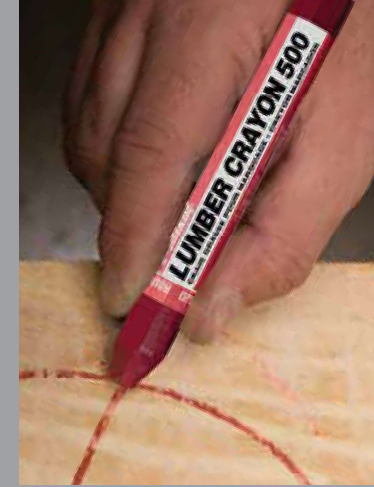
Plastics

Clean, Dry										⊙					
------------	--	--	--	--	--	--	--	--	--	---	--	--	--	--	--

Glass, Ceramic

Clean, Dry										⊙					
------------	--	--	--	--	--	--	--	--	--	---	--	--	--	--	--

⊙ Preferred Selection ⊙ Secondary Selection



Industry Uses

Construction
Stone and masonry
Lumber and timber industry

Surface Uses

Wood
Concrete
Stone
Plastic
Rubber
Rough Metal

FM. 120



Markal® FM.120 is a wax-based marking crayon that works in all weather conditions. The marks are weather- and fade-resistant for long-lasting visibility

Features & Benefits

- Marks on rough surfaces, such as concrete, wood, steel, and cardboard
- Formulated for weather- and fade-resistant marking on indoor and outdoor surfaces
- Softer formula allows for superior marking in cold climates
- Available in 6 bright colors for instant identification
- Marking range: -20°C to 50°C (-4°F to 122°F)

Details



Size 120mm x 11mm

- 44010100 ● White
- 44010200 ● Yellow
- 44010300 ● Red
- 44010400 ● Blue
- 44010500 ● Green
- 44010600 ● Black

Pro-EX®



Markal® Pro-EX® is a clay-based, extruded lumber crayon for bright marks on different surfaces in the construction trades. This premium-grade crayon works on wet or dry surfaces.

Features & Benefits

- Stronger formula for reduced breakage and longer marking life
- Superior performance on wet, frozen, or treated wood
- Clay-based formula for smooth, fast marking
- Marking range: -29°C to 66°C (-20°F to 150°F)

Details



Size 120mm x 11mm

- 80379 ● Brown
- 80380 ● White
- 80381 ● Yellow
- 80382 ● Red
- 80383 ● Black
- 80384 ● Orange
- 80385 ● Blue
- 80386 ● Green
- 80387 ● Pink
- 80388 ● Purple

LUMBER CRAYON 200



Markal® Lumber Crayon 200 is a soft, standard-grade lumber crayon for general-use marking and works well in cold climates. The wax-based mark is weather- and UV-resistant.

Features & Benefits

- Known in construction trades as “keel” or layout chalk
- Formulated for weather- and fade-resistant marking on most surfaces
- Special softer formula allows for superior marking in cold climates
- Marking range: -29°C to 66°C (-20°F to 150°F)

Details



Size 127mm x 13mm

- 80350 ● White
- 80351 ● Yellow
- 80352 ● Red
- 80353 ● Black
- 80354 ● Orange
- 80355 ● Blue
- 80356 ● Green

LUMBER CRAYON 500



Markal® Lumber Crayon 500 is a harder, clay-based crayon for longer marking life and is suitable for marking in hot climates. The bold, bright marks are weather- and UV-resistant.

Features & Benefits

- Known in construction trades as “keel” or layout chalk
- Clay-based formula provides longer marking mileage
- Special harder formula allows for superior marking in hot climates
- Available in fluorescent colors for high visibility marks
- Marking range: -29°C to 66°C (-20°F to 150°F)

Details

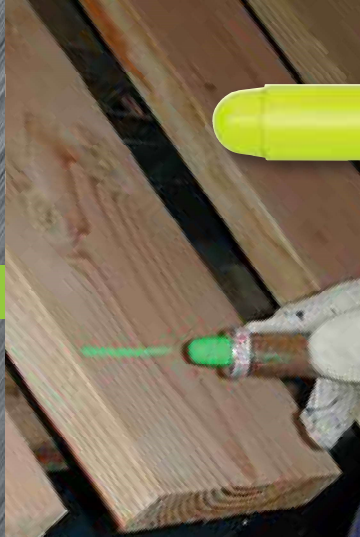


Size 127mm x 13mm

- 80320 ● White
- 80321 ● Yellow
- 80322 ● Red
- 80451 ● Fluo Yellow
- 80452 ● Fluo Red
- 80454 ● Fluo Orange
- 80462 ● Fluo Pink



markal.com

**Details**

Size 17 mm (11/16")

- 82447 ● Yellow 63
- 82459 ● Bright Orange 44
- 82467 ● Bright Red 34
- 82468 ● Neon Orange 103
- 82469 ● Tan 45
- 82470 ● Tangerine 03

**Details**

Size 17 mm (11/16")

Medium

- 82335 ● Blue Moon
- 82336 ● Orange Sherbet
- 82337 ● Watermelon Red
- 82339 ● Grasshopper Green
- 82346 ● Emerald Green

**Details**

Size 12.7 mm (1/2")

- 82742 ● Red
- 82743 ● Orange
- 82744 ● Pink
- 82745 ● Red Orange
- 82746 ● Yellow Orange
- 82747 ● Burgundy

ULTRASCAN®

Markal® ULTRASCAN® lumber grading crayons provide the best color separation and character recognition in the industry for grade mark readers.

Features & Benefits

- Bright colors provide the highest fluorescent response of any lumber grading marker
- Maximum character recognition and accuracy for the lowest possible reject rates
- Each batch is tested to meet the specifications for Lucidyne ColorScan® and Newnes-McGehee grade mark readers.
- Unique formula provides excellent writing on wet and green lumber, even with fungicide coating
- 6 colors for superior color separation compared to competitive fluorescent wax crayons
- One hardness for all temperatures, eliminates duplicate inventory
- Dramatically longer use, provides up to 4X the writing life of competitive crayons.

Industry Uses

Lumber

Surface Uses

Dimensional lumber

SCAN-IT® Plus

Markal® SCAN-IT® Plus is a versatile grade marking crayon with multiple hardnesses and sizes to mark most lumber types in varying production environments.

Features & Benefits

- Each batch is tested to meet the specifications for Lucidyne ColorScan® grade mark readers
- Superior color separation for accurate grading compared to competitive crayons
- Makes smear-resistant marks, reduces scanning errors
- Up to 14 fluorescent colors in three hardnesses for varying production environments

Industry Uses

Lumber /timber

Surface UsesLumber
Wood products**OPTIMARK®**

Markal OPTIMARK® improves automatic cut-off saw accuracy. The fluorescent crayon makes bright, clear marks, eliminating missed scans.

Features & Benefits

- Formulated to minimize color transfer to machinery, reducing work downtime and clean-up
- Lasts longer - up to 4x the writing life compared to ordinary crayons and fluorescent markers
- Six visually distinct fluorescent colors identifies multiple operators

Industry Uses

Lumber

Surface Uses

Dimensional lumber

TRADES-MARKER®



TRADES-MARKER® has the marking versatility of a paper-wrapped grease pencil combined with simple push-button advance that helps reduce cost and waste. This refillable, all-surface marker leaves a wear-resistant mark and is safe for all surfaces.

Features & Benefits

- Great for many surfaces including: smooth, rough, rusty, or dirty surfaces
- Marks are rub- and weather-resistant, leaving a bold, permanent mark
- Marker refills eliminate mess and paper waste of grease pencils, saving time and money
- Holder maximizes complete use of marker
- Durable plastic holder helps prevent breakage and keeps hands and clothing clean
- Push-button advancing makes for easy, one-handed use.

Industry Uses

Construction
Automotive and other transportation
Quality control
Welding
Metal fabrication
Textile

Surface Uses

Steel and iron
Pipes and tubes
Stone
Tile
Ceramics
Lumber
Cloth, fabric (textiles)
Glass
Plastic



Details

Starter Pack (1 Holder/12 Refills)



- 96130 ● White
96131 ● Yellow
96132 ● Red
96133 ● Black
96137 ● Orange

Refill Pack



- 96240 ● White
96241 ● Yellow
96242 ● Red
96243 ● Black
96247 ● Orange



TRADES-MARKER® WS



TRADES-MARKER® WS is a refillable, all-surface marker that leaves a removable mark and is safe for all surfaces. Marks can be wiped away easily with water.

Features & Benefits

- Marks can be easily wiped away with water, ideal for quality control and temporary marking needs
- Great for many surfaces including: smooth, rough, rusty, or dirty surfaces
- Marker refills eliminate mess and paper waste of grease pencils, saving time and money
- Durable plastic holder helps prevent breakage and keeps hands and clothing clean
- Push-button advancing makes for easy, one-handed use.

Industry Uses

Automotive and other transportation
Quality control
Glass
Metal fabrication

Surface Uses

Glass
Plastic
Stone
Non-porous surfaces
Steel and iron
Tile
Ceramics



Details

Starter Pack (1 Holder/12 Refills)



- 96190 ● White
96191 ● Yellow
96192 ● Black
96193 ● Red

Refill Pack



- 96180 ● White
96181 ● Yellow
96182 ● Black
96183 ● Red

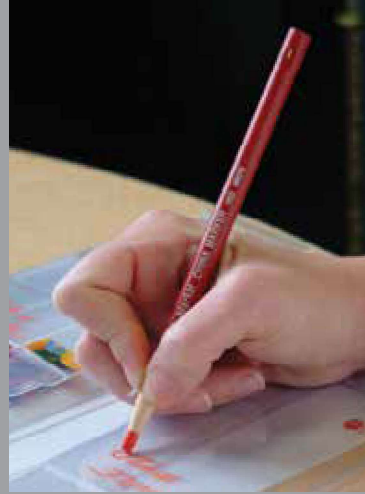


Industry Uses

Automotive and other transportation
Metal fabrication
Quality control
Construction
Welding
Lumber and timber industry

Surface Uses

Glass/Ceramics
Metals
Cardboard/Paper
Plastic
Wood
Concrete
Rubber
Asphalt

**CHINA MARKER**

The paper-wrapped grease pencil is a smooth-writing, economical marker for marking almost any surface.

Features & Benefits

- Low-cost, general purpose marker for smooth writing on most surfaces
- Moisture-resistant marker, can be used effectively in most climates
- No sharpening required; pull string and unwrap paper
- High-visibility colors for instant identification

Details

- 96010 ● White
96011 ● Yellow
96012 ● Red
96013 ● Black
96014 ● Crimson
96015 ● Blue
96016 ● Green

**FM. 213 / FM. 220
FM. 230**

Industrial square chalk for temporary marking on most surfaces. Marks are easy to remove and its square design offers a variety of line widths.

Features & Benefits

- Marks are easily wiped away
- Square shape provides various mark sizes
- Paper holder keeps hands clean during use (FM.213)

Details**FM.213**

Size 90x13x13 mm
44060100 ● White

**FM.220**

Size 100x20x20 mm
44070100 ● White

**FM.230**

Size 100x30x30 mm
44080100 ● White

**HOLDER FM. 001**

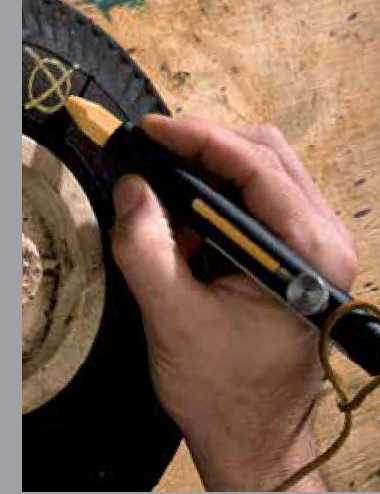
Durable aluminum holder helps prevent breakage and offers a comfortable grip during marker use.

Features & Benefits

- Metal teeth of holder firmly grip the crayon to secure marker during use
- Push-button design allows for easy advancing and retracting of the crayon
- Designed for use with the Markal FM.120 crayon

Details

Length 11.4 cm
44009999 Holder FM.001

**HOLDER 108**

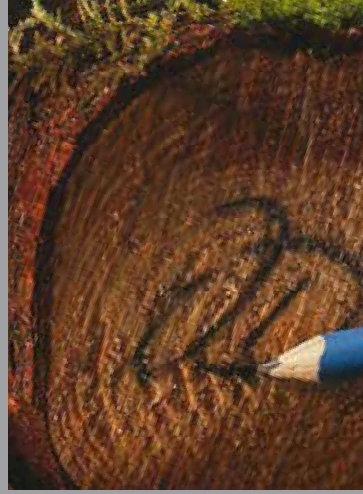
This specially-designed holder and leather wrist strap reduces hand fatigue and protects hex-shaped Markal markers on the jobsite.

Features & Benefits

- Heavy-duty metal holder helps prevent breakage, reducing costs
- Push-button advancing reduces downtime for increased productivity
- Comfortable leather wrist strap helps prevent dropping
- Designed for use with all 1,3cm (1/2") Markal hex-shaped markers: Lumber crayons #200, #500, Pro-EX®, Optimark®, and Tyre Marque®

Details

Length 15.2 cm (1/2")
85400 Holder 108



ZS.124 / ZS.130

ZS 124 & ZS.130 are rectangular carpenter pencils, ideal for marking wood, cardboard, and other surfaces. The premium quality wood resists breaking when stored with heavy tools. Available in 24 and 30 cm.

Features & Benefits

- Soft lead is easy to sharpen
- Rectangular design prevents rolling on surfaces and is easy to use
- Red varnish coating protects pencil for outdoor use
- High-quality wood resists breaking when stored with heavy tools
- Unsharpened when delivered

Details



44091124 24 cm ZS.124
44091130 30 cm ZS.130



44092124 24 cm ZS.124
44092130 30 cm ZS.130

ZS.224 / ZS.230

ZS 224 & ZS.230 are rectangular masonry pencils, ideal for marking on stone and other hard surfaces. The premium-quality wood resists breaking when stored with heavy tools. Available in 24 and 30cm.

Features & Benefits

- Soft lead is easy to sharpen
- Hard Graphite lead for great durability
- Rectangular design prevents rolling on surfaces and is easy to use
- Green varnish coating protects pencil for outdoor use
- High-quality wood resists breaking when stored with heavy tools
- Unsharpened when delivered

Details



44091224 24 cm ZS.224
44091230 30 cm ZS.230



44092224 24 cm ZS.224
44092230 30 cm ZS.230

ZS.324

ZS.324 is a red varnished triangular pencil, ideal for marking on every kind of smooth surfaces, including glass. The premium-quality wood resists breaking when stored with heavy tools.

Features & Benefits

- Soft lead is easy to sharpen
- Graphite lead easy to remove
- Triangular design prevents rolling on surfaces and fits well in the hand.
- Red varnish coating with dipped end protects pencil for outdoor use
- High-quality wood resists breaking when stored with heavy tools
- Sharpened when delivered

Details



44090324 24 cm ZS.324

ZS.424

ZS.424 is a blue varnished rectangular pencil, ideal for marking on wet wood. When used dry, it leaves a gray mark similar to a pencil's lead, but which cannot be erased. When used wet, its tip moistened by water produces an indelible bright purple writing.

Features & Benefits

- Soft lead is easy to sharpen
- Rectangular design prevents rolling on surfaces and fits well in the hand.
- Blue varnish coating protects pencil for outdoor use
- High-quality wood resists breaking when stored with heavy tools
- Unsharpened when delivered

Details



44091424 24 cm ZS.424



44092424 24 cm ZS.424

Industry Uses

Lumber and timber industry
Forestry
Construction

Surface Uses

Wood
Paper
Cardboard
Stone
Concrete
Bricks
Plastic
Glass
Metal
Ceramics
Cardboard
Paper