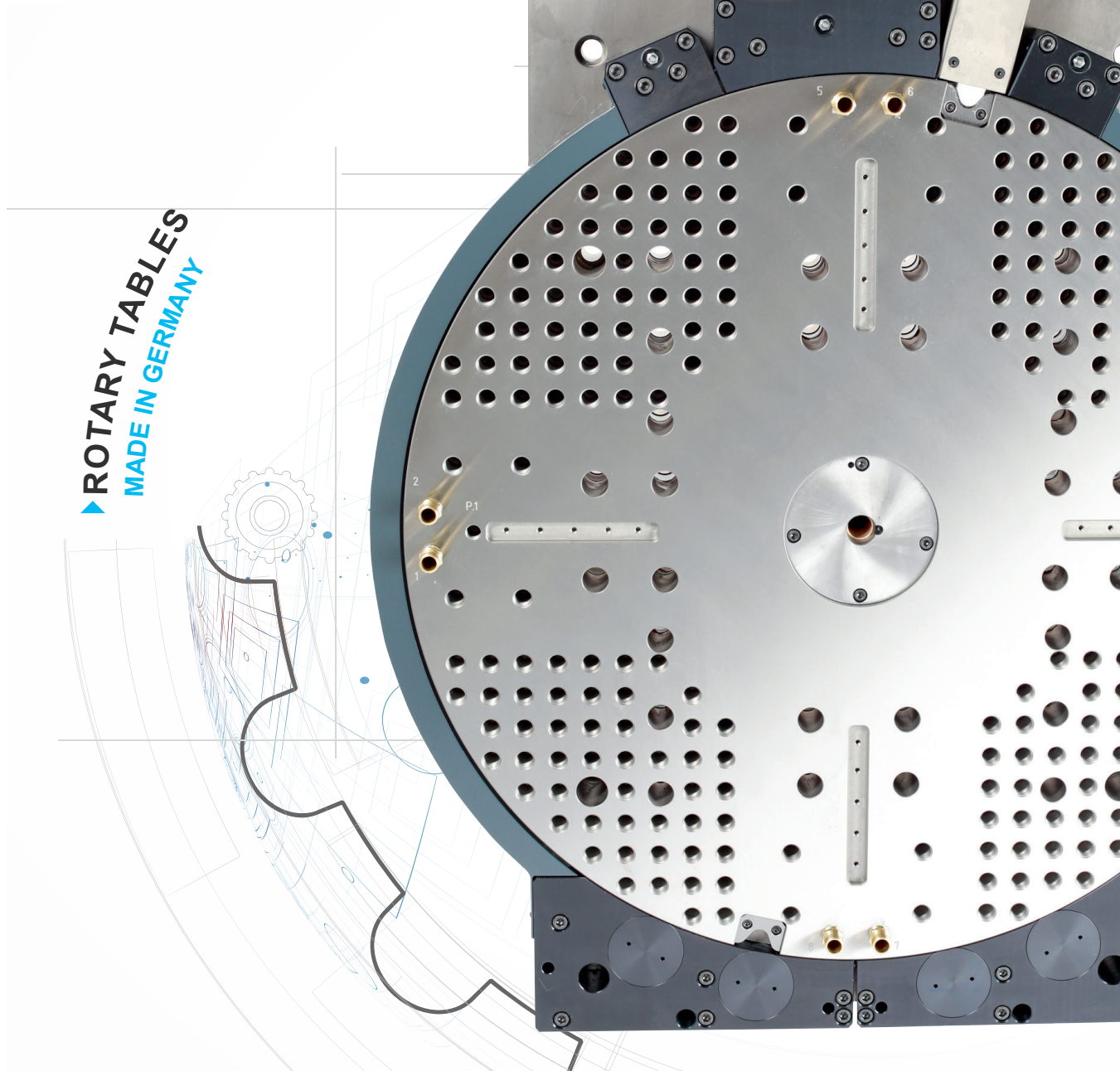


POLAR-FORM[®]
Werkzeugbau GmbH

**TRUST IN
OUR
KNOW-HOW**
WITH OVER 900
MANUFACTURED
ROTARY TABLES

▶ **ROTARY TABLES**
MADE IN GERMANY



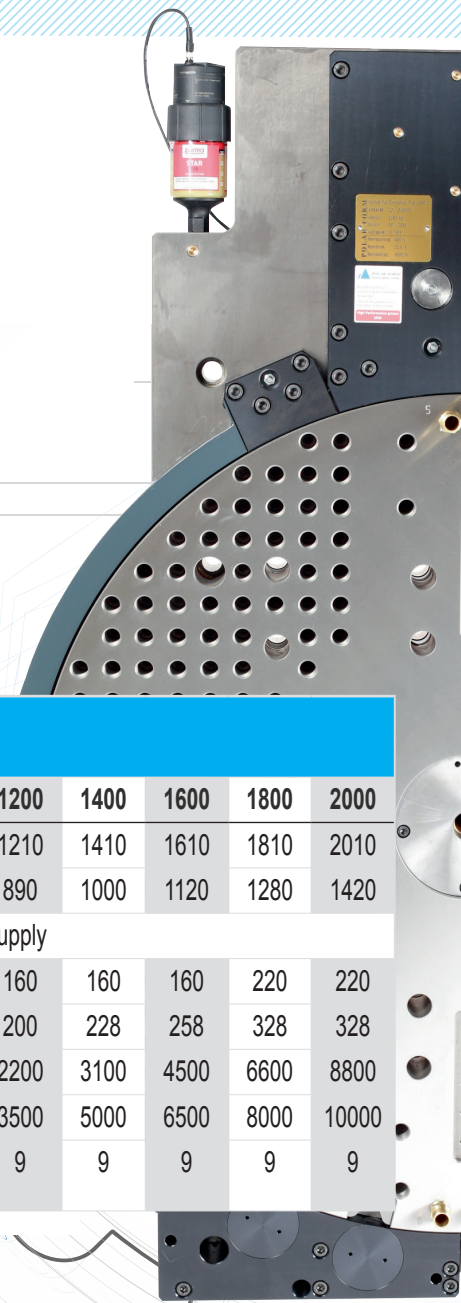
INDIVIDUAL. STRONG. LONG-LIVED.
OUR ROTARY TABLES

WE GOT THE HANG OF IT ROTARY TABLES ///

POLAR-FORM offers a comprehensive spectrum of rotary tables for use in the production of two-shot and multi-shot molds.

Rotary tables from **POLAR-FORM** are, thanks to their low overall height, extraordinarily thin but in terms of design and construction they are very robust. Working in close cooperation with our partners we have developed a wide variety of drives and autonomous control systems. This brings you 180° rotation in just 0.5 seconds.

As you can see, we really do know our way round. Our rotary tables are used with molds we manufacture in-house not only in our customers' production systems but also on our own multi-shot injection molding machines. So far, over the years we have been operating, we have implemented some 900 such rotary tables. With quantities in this order **POLAR-FORM** is clearly one of the leading rotary table specialists worldwide.



TECHNICAL DATA

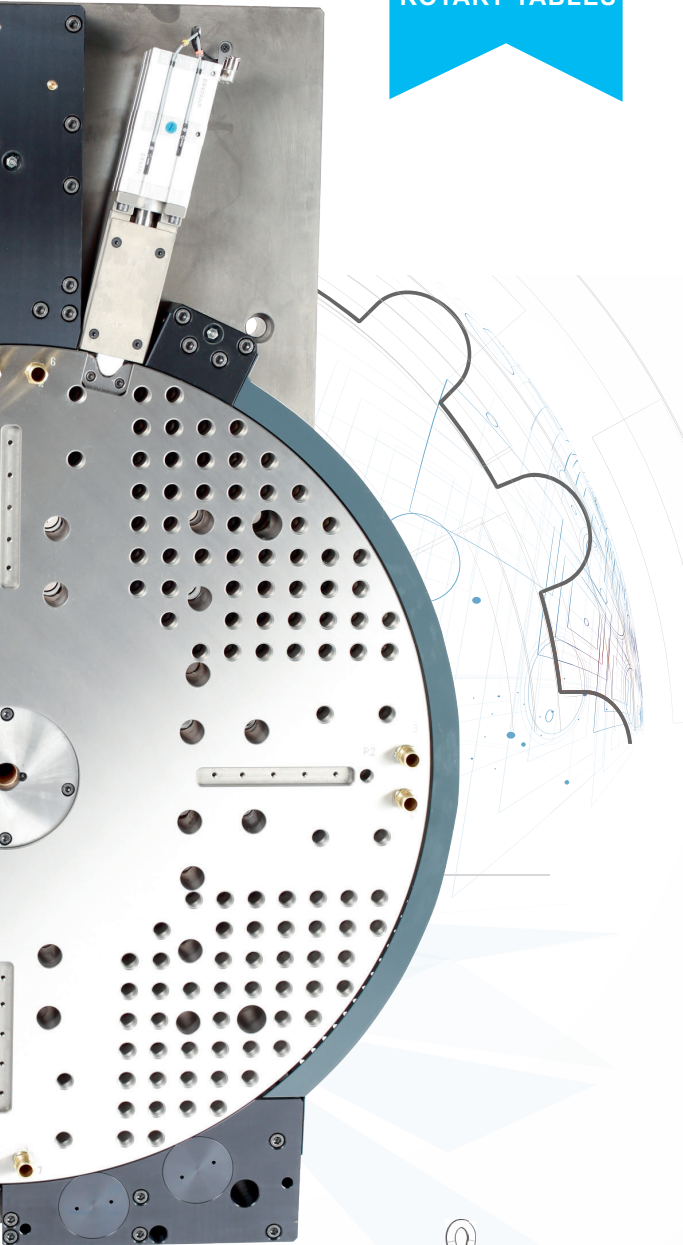
Typ		500	600	650	700	800	900	1000	1100	1200	1400	1600	1800	2000
Rotary table diameter	mm	512	584	656	728	800	904	1002	1120	1210	1410	1610	1810	2010
Tie-bar clearance Minimum dimensions	mm	355	405	460	500	560	630	710	780	890	1000	1120	1280	1420
X	mm	results after selection of the media supply												
Y	mm	125	125	125	125	125	160	160	160	160	160	160	220	220
Z	mm	128	128	128	128	148	148	160	160	200	228	258	328	328
Rotary table, weight	kg	250	300	400	500	700	1000	1300	1400	2200	3100	4500	6600	8800
Maximum mold weight on ejector side	kg	450	500	600	800	1200	1600	2200	2800	3500	5000	6500	8000	10000
Maximum number of media circuits possible		5	5	5	5	5	9	9	9	9	9	9	9	9

X* This dimension depends on the number of medium circuits.

AXIS LENGTHS (DEPENDING ON MEDIUM CIRCUITS) FOR

Centering diameter Y : 125 mm	X mm	Centering diameter Y : 160 mm	X mm
2 Temperature control circuits	118	4 Temperature control circuits	177
2 Temperature control circuits + 1 Pneumatic feed	133	4 Temperature control circuits + 1 Pneumatic feed	192
2 Temperature control circuits + 2 Hydraulic circuits	208	4 Temperature control circuits + 2 Hydraulic circuits	267
4 Temperature control circuits	188	6 Temperature control circuits	247
		4 Temperature control circuits + 2 Hydraulic circuits + 1 Pneumatic feed	282

**TRUST IN
OUR
KNOW-HOW**
WITH OVER 900
MANUFACTURED
ROTARY TABLES

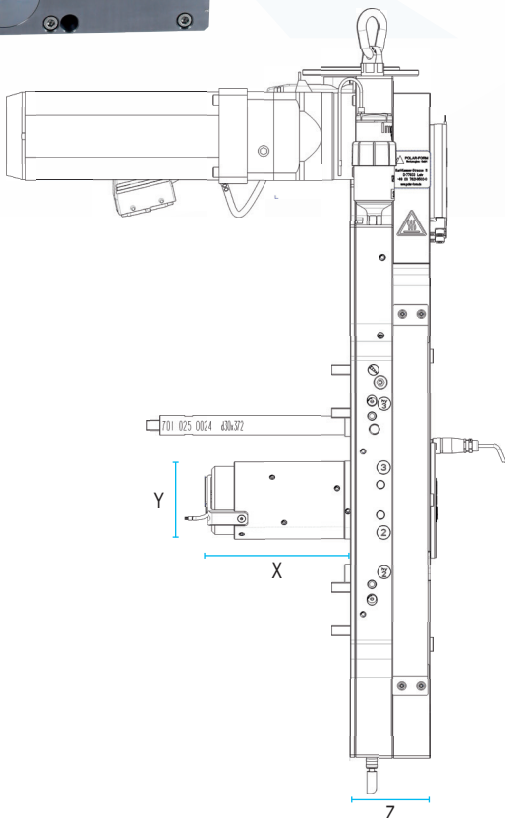


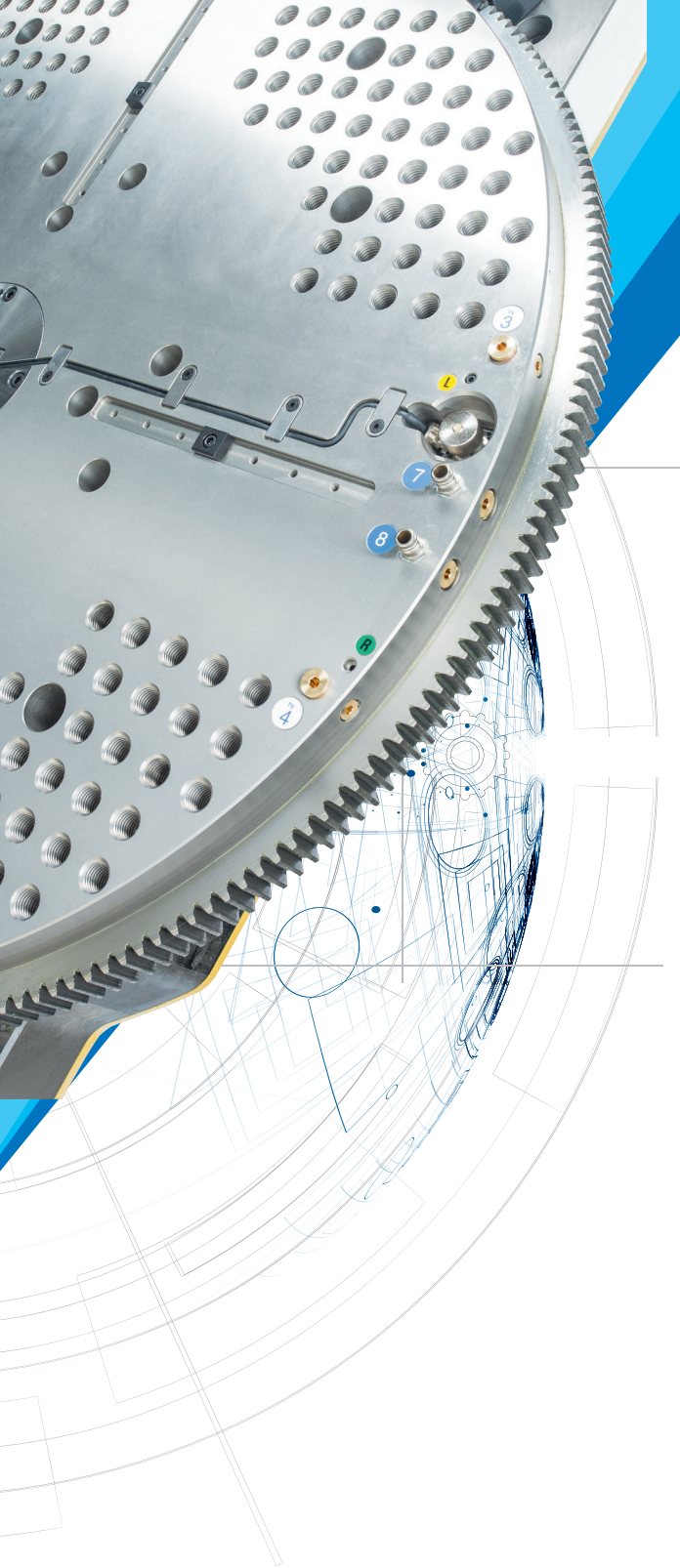
ADDITIONAL OPTIONS AVAILABLE ON REQUEST

- Drive via electric motor
- Hydraulic drive, controlled (Rotary encoder)
- Additional cooling circuits
- Hydraulic circuits
- Pneumatic feed
- Additional indexing at 90°, 120°, 240°, 270°
- signal transmission
- Mechanical lowering function (lifting curve)
- Mold centering as per customer specifications
- Ejector position as per customer specification
- High temperature variant, up to 180°C
- Mechanical ejector package coupling
- Direct media transfer in center
- Unscrewing unit, integrated in the rotary table
- Side ejector, hydraulically controlled, integrated in the rotary table

OUR SERVICE

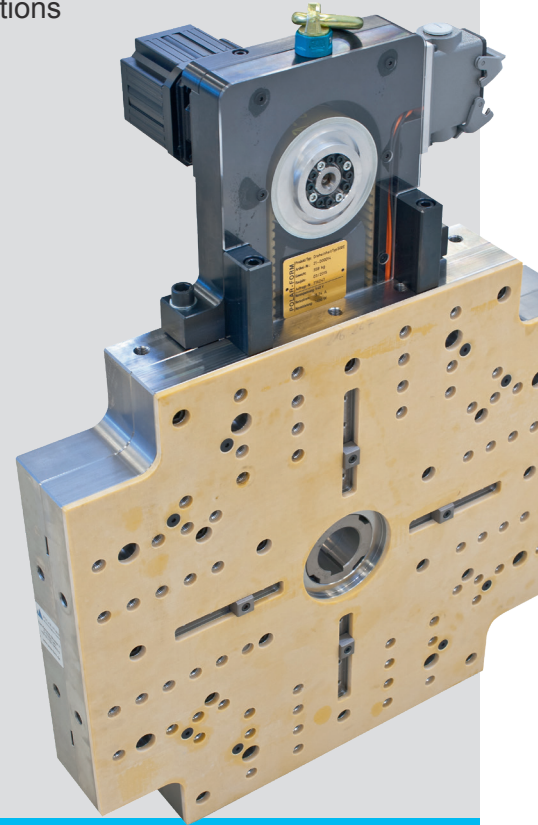
- Functional testing
- Customized drawings
- Operating instructions / maintenance schedule
- Spare parts list
- Routine maintenance service





ROTARY DRIVE FOR INDEX PLATES

- Rotary drives are used for injection molds fitted with an index plate
- The drive is suitable for use with many different indexing plate molds
- The basic construction covers a wide variety of customized requirements, e.g.:
 - various drive types
 - additional ejector functions



OTHER PRODUCTS

Manufacture of injection molds and equipment

- 1-shot and multi-shot molds
- In-mold labeling (IML)
- Silicone molds (LSR = liquid silicone rubber)
- Thin-wall technology
- Unscrewing molds
- Injection molds and equipment for insert molding

Services

- Simulation runs to show filling and deformation behavior
- Sampling trials for 1-shot and multi-shot molds



POLAR-FORM®
Werkzeugbau GmbH

POLAR-FORM Werkzeugbau GmbH
Karl-Kammer-Straße 11
D-77933 Lahr

Tel. +49 (0)78 21-95 03-0
Fax +49 (0)78 21-95 03-20

info@polar-form.de
www.polar-form.de