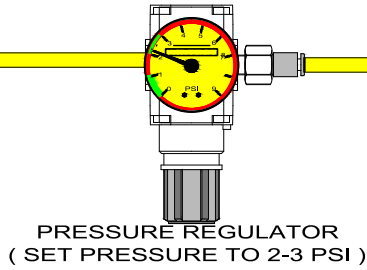


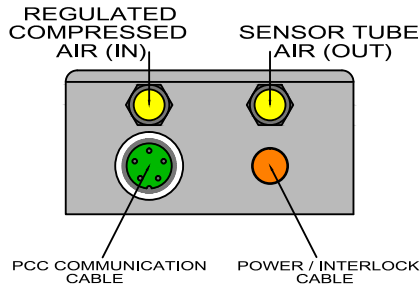
IMPORTANT

USE OF SILICONE RUBBER TUBE IS CRITICAL FOR OPTIMAL LEAK DETECTION PERFORMANCE

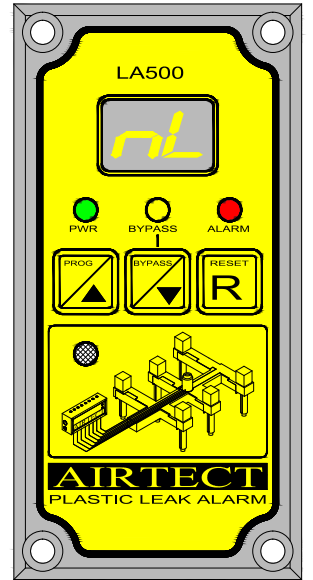
CLEAN / DRY COMPRESSED AIR (4-10 BAR)



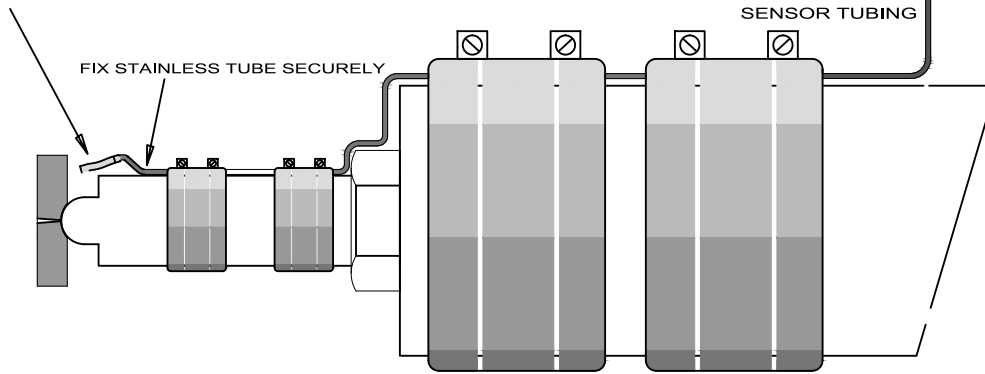
PRESSURE REGULATOR
(SET PRESSURE TO 2-3 PSI)



REGULATED COMPRESSED AIR (IN) SENSOR TUBE AIR (OUT)
PCC COMMUNICATION CABLE POWER / INTERLOCK CABLE



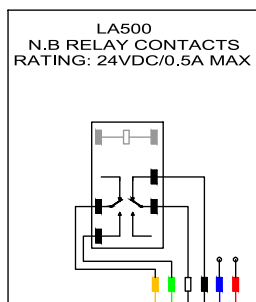
- 1) FILE STAINLESS SENSOR TUBE FLAT
- 2) ENSURE 1MM CLEAR HOLE
- 3) PUT ON SILICONE RUBBER SLEEVE (LEAVE 20mm OVERHANG)
- 4) KEEP AWAY FROM DIRECT CONTACT WITH THE NOZZLE OR HEATER BAND (MAX 270 °C CONTINUOUS)
- 5) PLACE CLOSE TO NOZZLE



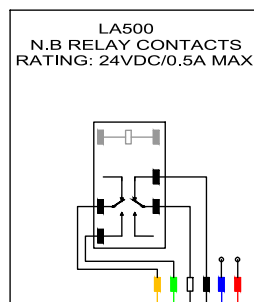
FIX STAINLESS TUBE SECURELY

RED: +24VDC
BLUE: 0V
GREEN / YELLOW: N/O
BLACK / WHITE: N/C

N.B RELAY CONTACTS RATING: 24VDC/0.5A MAX



GREEN / YELLOW = N/O
BLACK / WHITE = N/C
RED: +24VDC
BLUE: 0V



GREEN / YELLOW = N/O
BLACK / WHITE = N/C
RED: +24VDC
BLUE: 0V