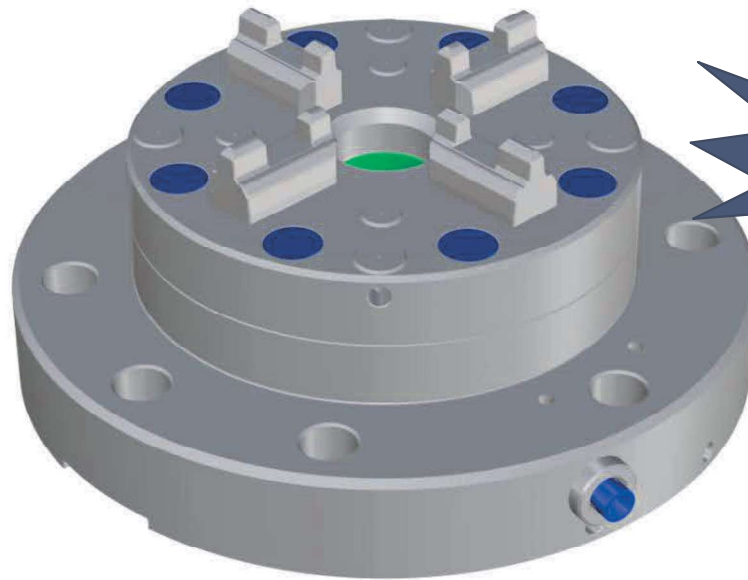
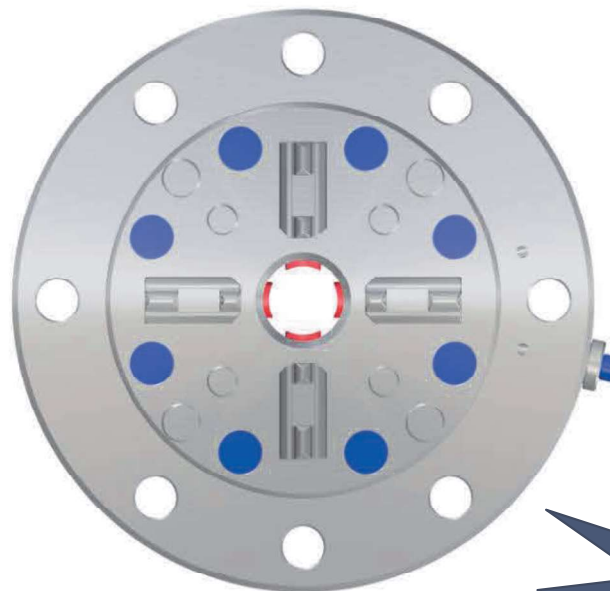


PSE WPC100P Clamping Chuck

The automatic pneumatic table chuck is available with or without Z-support cleaning.



NEW
completely



NEW without ball
mechanism

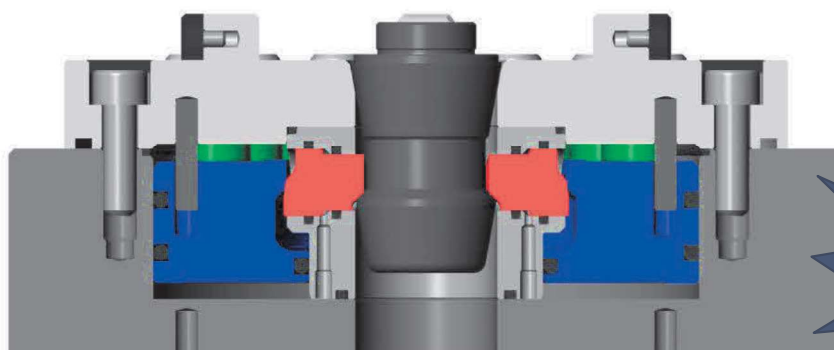


Technical Data WPC100P
Repetition accuracy 0,002 mm
Indexing 4 x 90°
Clamping force without pressure amplification 10.000 N
Clamping force of turbo function with opening/re-tightening and cleaning 16.000 N (6 bar)
Clamping options, compatible with ITS® clamping system of Erowa AG

Machine table mountable with M12 screws, distance: 125 mm
Dimensions: Ø 150 up to Z-support cleaning 50 mm
Total height 64 mm

Material rustproof, hardened to 60 HRC

Operated by control unit or compressed air gun. The system is controllable from the base plate for use on 5-axis machining centers.



New Clamping Mechanism

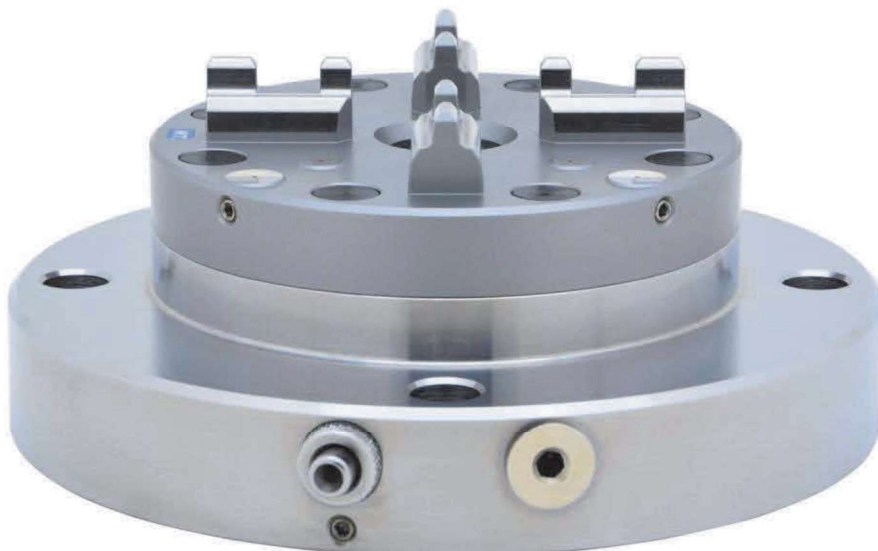
The system is completely sealed to avoid penetration of shavings or emulsions.

A seal is not necessary, but optionally available.

Our new construction has a considerably bigger rigidity as existing systems with spheres resulting in no vibrations during processing, compatible with ITS® clamping system of Erowa AG

Order No.: PSE-WPC100P

With Z-support cleaning
Order No.: PSE-WPC100PC



Two types of pneumatic clamping chucks are available, with and without Z-support cleaning.
The designation of the automatic Z-support cleaning is marked with the letter "C".
A manual PM5C valve is necessary for the operation.



WPU100D

Pneumatic clamping chuck on pallet

Machine table mountable with M10 screws, hole distance: 125 mm

Standard control with compressed air gun

Dimensions: 150 x 110 x 56 mm

Clamping force: 9.000 N

Material: rustproof, hardened 54 HRC, compatible with ITS®* clamping system of Erowa AG

Order No.: PSE-WPU100D

Available in Version C
(WPU100DC)

Order No.: PSE-WPU100DC

Accessories: manual valve **PM5** or **PM5C**



Order No.: PSE-PM5



Order No.: PSE-PM5C

Manual valve PM5 appropriate for clamping chuck without Z-support cleaning

PM5C appropriate for pneumatic clamping chuck with Z-support cleaning



WMC100

Manual clamping chuck 100
Machine table mountable with M6 screws
Dimensions: Ø 100 x 36 mm, compatible with ITS®* clamping system of Erowa AG
Material: rustproof, hardened 54 HRC
Clamping force 10.000 N
Max. tightening torque: 6 Nm

Remark: clamping chuck can also be delivered on pallet.

Order No.: PSE-WMC100



WPU56D

Pneumatic clamping chuck on pallet
Machine table mountable with M10 screws, hole distance 80 mm
Standard control: with compressed air gun
Dimensions: 110 x 80 x 66 mm
Clamping force: 4.000 N
Material: rustproof, hardened to 54 HRC, compatible with ITS®* clamping system of Erowa AG

Order No.: PSE-WPU56D



WPU56DC

Pneumatic clamping chuck with automatic Z-support cleaning
Machine table mountable with M10 screws, hole distance: 80 mm

Standard control with manual valve

Dimensions: 110 x 80 x 66 mm

Clamping force: 4.000 N

Material: rustproof, hardened 54 HRC, compatible with ITS®* clamping system of Erowa AG

Order No.: PSE-WPU56DC



WMC56

Manual clamping chuck 50

Machine table mountable with M6 screws

Dimensions: 56 x 56 x 36 mm

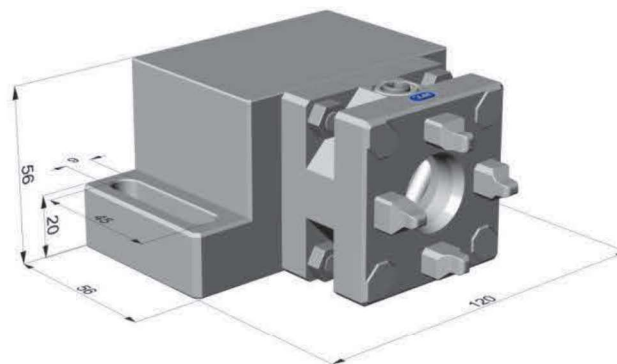
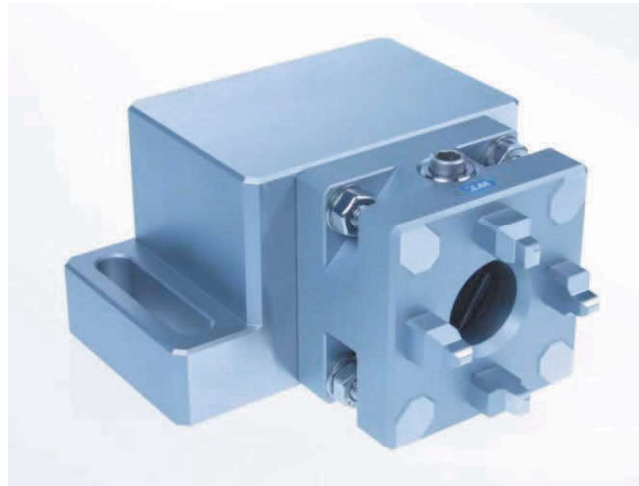
Material: rustproof, hardened 54 HRC, compatible with ITS®* clamping system of Erowa AG

Clamping force 6.000 N

Max. tightening torques: 6 Nm

Order No.: PSE-WMC56

Manual clamping chuck WMC56H on clamping beam pallet



WMC56H on clamping beam pallet

Manual clamping chuck incl. clamping beam pallet
Machine table mountable with M8 screws, hole distance: 100 mm
Dimensions: 120 x 56 x 92 mm
Material: rustproof, hardened 54 HRC, compatible with ITS®* clamping system of Erowa AG
Max. tightening torque: 6 Nm

Order No.: PSE-WMC56H

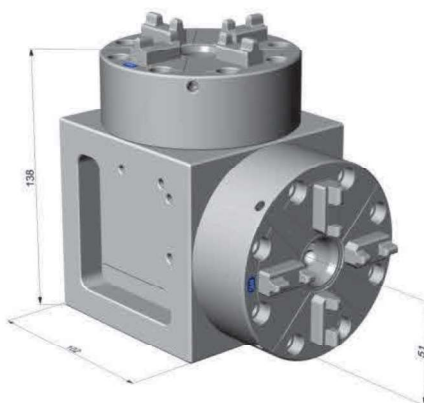
Manual clamping chuck WMC75



WMC75

Manual clamping chuck
Machine table mountable with M6 screws
Dimensions: $\varnothing 75 \times 36$ mm
Material: rustproof, hardened 54 HRC, compatible with ITS®* clamping system of Erowa AG
Clamping force 10.000 N
Max. tightening torque: 6 Nm

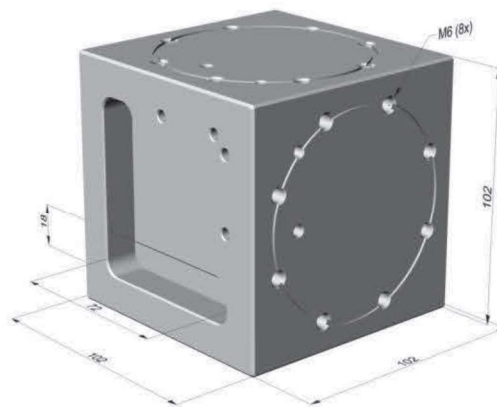
Order No.: PSE-WMC75



Angle block WMC100-90C

Angle block including 2 pieces of vertical horizontal, manual clamping chuck
Distance of horizontal axis from base: 51 mm
Rectangular deviation of clamping axis: 0,05/100 mm
Machine table installation:
Dimensions: 102 x 102 x 102 mm
Clamping force: 2 x 10.000 N
Material: rustproof, hardened 54 HRC, compatible with ITS®* clamping system of Erowa AG

Order No.: PSE-WMC100-90C



Angle block WMC100-90

Angle block without clamping chuck

Distance of the horizontal axis from base: 51 mm

Machine table installation:

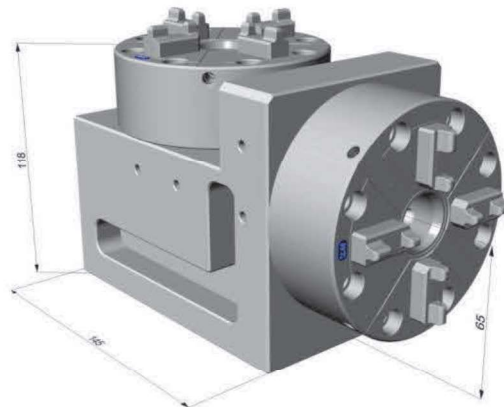
Dimensions: 102 x 102 x 102 mm

Material: rustproof, hardened 54 HRC, compatible with ITS®* clamping system of Erowa AG

Drill pattern suitable for WPU100 and WMC100

Order No.: PSE-WMC100-90

Angle block WPU100-90C



Angle block WPU100-90C

Angle block including 2 pieces of vertical horizontal, pneumatic clamping chuck

Distance of horizontal axis from base: 65 mm

Rectangular deviation of clamping axis: 0,005/100 mm

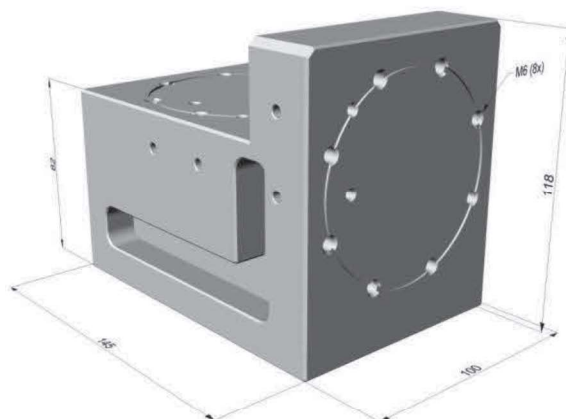
Machine table installation

Dimensions: 100 x 118 x 145 mm

Clamping force: 2 x 9.000 N

Material: rustproof, hardened 54 HRC, compatible with ITS®* clamping system of Erowa AG

Order No.: PSE-WPU100-90C



Angle block WPU100-90

Angle block without clamping chuck

Distance of horizontal axis from base: 65 mm

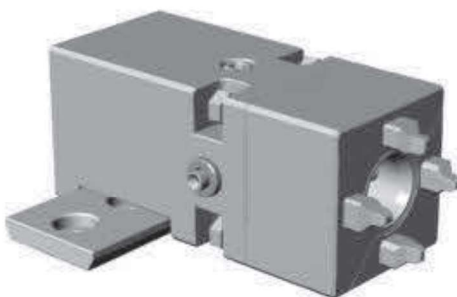
Machine table installation

Dimensions: 100 x 118 x 145 mm

Material: rustproof, hardened 54 HRC, compatible with ITS®* clamping system of Erowa AG

Drill pattern suitable for WPU100D and WMC100

Order No.: PSE-WPU100-90



WPU56H SET

Horizontal pneumatic clamping chuck
for WEDM

Direct machine table installation with M8 screws, distance: 25 mm

Standard control with compressed air gun

Dimensions: 126 x 56 x 56 mm

Clamping force: 4.000 N

Material: rustproof, hardened 54 HRC, compatible with ITS®* clamping system of Erowa AG

Order No.: PSE-WPU56H SET

Manual valve PM5 appropriate clamping chuck without Z-support cleaning

ALU Pallet Ø 148 with Centering Element



ALU Pallet Ø 148 with centering element incl. chucking spigot and chip carrier
Hole patterns or threads for screwing can be introduced according to your instructions.
Dimensions: Ø 148mm, height 40 mm, compatible with ITS®* clamping system of Erowa AG

Order No.: PSE D148 ALU Blank

ALU Pallet Ø 148 with hole pattern and thread M10



ALU Pallet Ø 148 with centering element incl. clamping spigot and chip carrier
Thread M10 hole pattern distance 25 mm and fitting bores Ø 10H7 mm
Dimensions: Ø 148 mm, height 40 mm, compatible with ITS® clamping system of Erowa AG

Order No.: PSE D148 ALU hole pattern 10H7

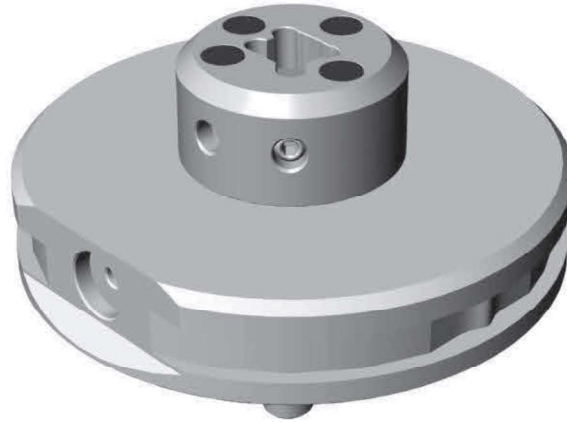
Pallet Ø 148 rustproof



Pallet Ø 148 rustproof with centering element for milling operation incl. clamping spigot and chip carrier
Hole patterns or threads for screwing can be introduced according to your instructions.
 Dimensions: Ø 148 mm, height 40 mm, compatible with ITS®* clamping system of Erowa AG

Order No.: PSE D148 rustproof Blank

Pallet Ø 148 rustproof hardened incl. electrode holder (15)

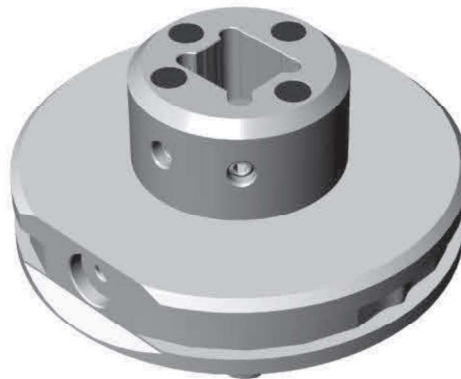


INOX Pallet Ø 148 hardened with centering element for milling operation incl. clamping spigot and chip carrier and electrode holder (15).

Dimensions: Ø 148mm, height 40 mm incl. front part (15) 70 mm, compatible with ITS®* clamping system of Erowa AG

Order No.: PSE D148 rustproof WQ15

Pallet Ø 148 rustproof hardened incl. electrode holder (25)

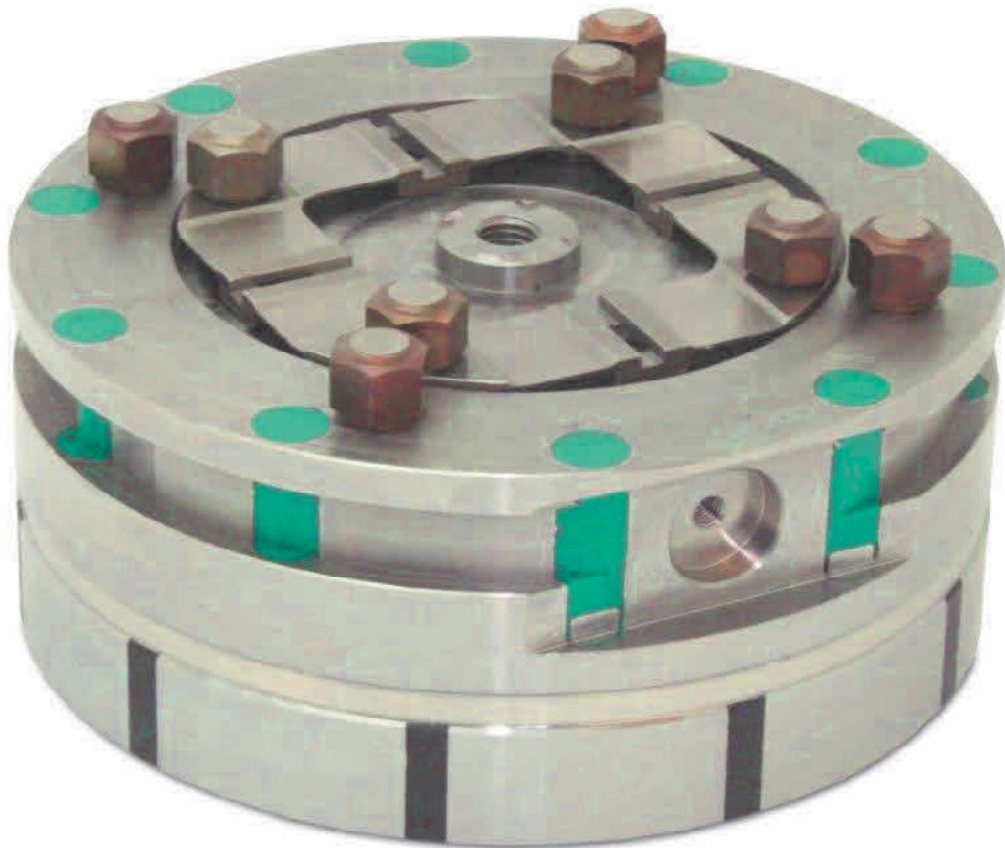


INOX Pallet Ø 148 hardened with centering element for milling operation incl. clamping spigot and chip carrier and electrode holder (25).

Dimensions: Ø 148mm, height 40 mm incl. front part (25) 75 mm, compatible with ITS®* clamping system of Erowa AG

Order No.: PSE D148 rustproof WQ25

Magnetic Pallet Ø 148



Centering elements directly mounted on the magnets, including gripper groove

Permanent magnetic clamping plate for precision milling works

Holding force: approx. 140 N/cm²

Radial pole pitch: 11+4 mm

Magnetic field height: 10 mm

Dimensions: Ø 148mm, height 57 mm, compatible with ITS®* clamping system of Erowa AG

Order No.: PSE D148 magnetic milling

Centering Vise including integrated Centering Element



WTP-CC65/10 Centering Vise

Jaw width: 65 mm

Bed length: 96 mm

Bed height: 50 mm

Total length: 110 mm

Design includes integrated G-centering plate for milling processing

Order-No.: PSE-WTP-CC 65/10

Centering Vise including Integrated Changer System

- Base body and base jaws made of case-hardened steel
- Spindle made of high-strength special steel
- Centring accuracy up to $\pm 0,03$ mm
- Clamping force 15 kN (approx. 1,5t)
- Available clamping range 65 mm and 80 mm
- Clamping width from 0 – 61 mm at BB 65 mm
- Clamping width from 0 – 155 mm at BB 80 mm
- Mounting holes for precise fixation on adapter plate
- Random zero-point clamping system integrable
- Broad selection of top jaws
- Special designs available



Stepped jaws with grip bar (width 60 mm)



Stepped jaw with two-step grip (width 60 mm)



Stepped jaw with grip bar (width 80 mm)



Base jaw for reception of the following top jaws (width 60 mm)



Top jaw, cross ribbed

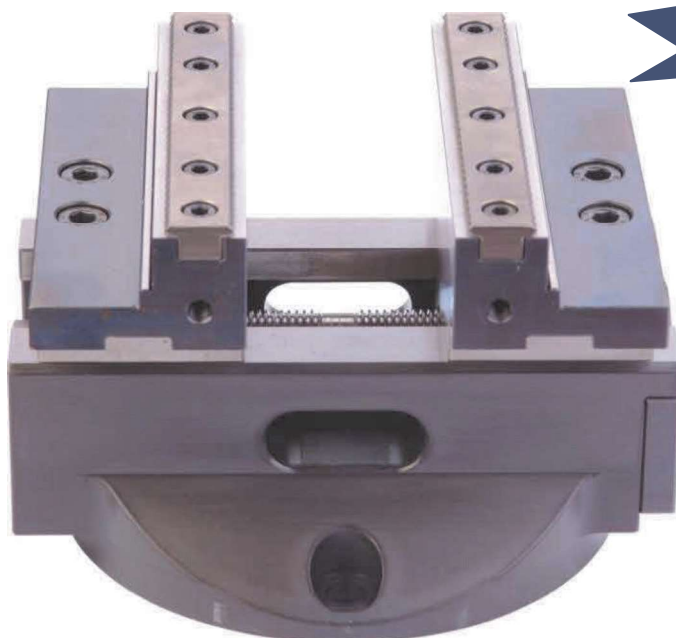


Top jaw, smooth/hard (width 60 mm)



Top jaw, prism

Centering Vise PSE- WTP-CC 125/170



Centering Vise

Jaw width: 125 mm
Bed length: 170 mm
Bed height: 62 mm
Total length: 171 mm

Order-No.: PSE-WTP-CC 125/170

Base Stepped Jaws including Grip Bar

Jaw width: 125 mm



Centering Vise PSE- WTP-CC 80/170



Centering Vise

Jaw width: 80 mm
Bed length: 170 mm
Bed height: 62 mm
Total length: 171 mm

Order-No.: PSE-WTP-CC 80/170

Centering Vise PSE- WTP-CC 65/100



Centering Vise

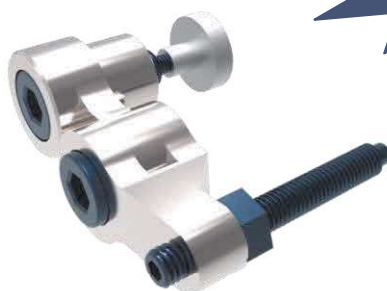
Jaw width: 65 mm
Bed length: 96 mm
Bed height: 50 mm
Total length: 110 mm

Order-No.: PSE-WTP-CC 65/100

Magnetic Limit Stop, Adjustable



Magnetic Limit Stop, Adjustable including Hinge



MEASURING PROBE



WSK

Probe with fine adjustment and exchangeable ball point
Material: rustproof, hardened 54 HRC, compatible with ITS®* clamping system of Erowa AG
Dimensions: 54 x 54 x 120 mm

Order No.: PSE-WSK



MS4

Measuring ball point for WSK
Contact shaft: hard metal
Available diameters: 2, 4, 5 and 6 mm
Dimensions: L = 55 mm

Order No.: PSE-MS4

MICROSCOPE



Microscope

Magnification: 40 times
Lighting LED 5 Volt Transformer 100-240 Volt
Incl. pointed checking pin for optical adjustment
Dimensions: 54 x 54 x 110 mm
Length of sensing bolt 75 mm

Mounting on holder is possible, compatible with ITS®* clamping system of Erowa AG

Order No.: PSE-Microscope

MEASURING PROBE SPARE SENSOR BALLS



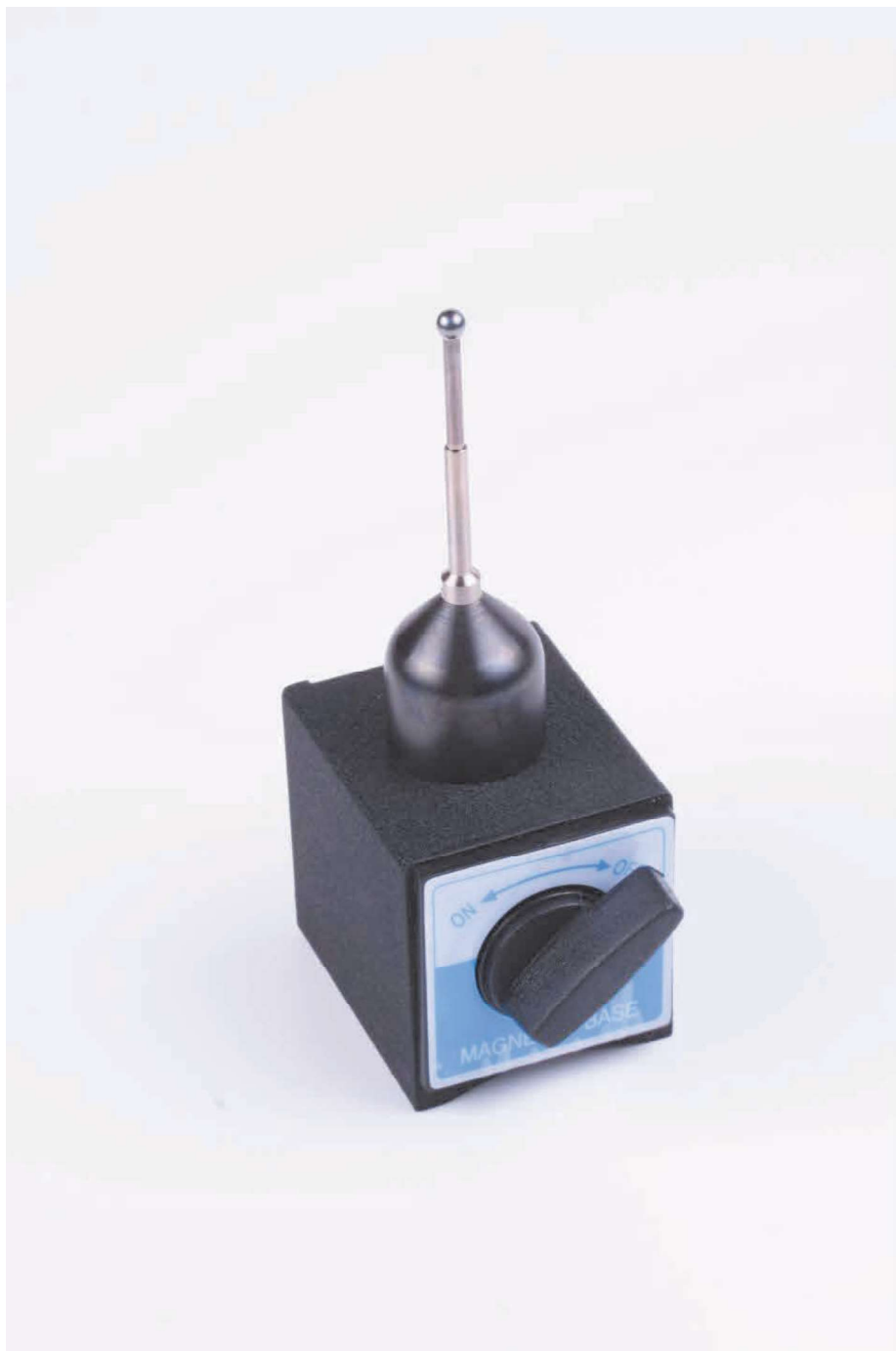
Measuring ball point **PSE-060.100 D5** and **PSE-060.000 D2**
Contact shaft: hard metal, compatible with ITS®* clamping system of Erowa AG
Available diameters: 2, 3, 4, and 5 mm

Attention: measuring ball point without spacer!

Dimensions: L = 79 mm
Material: rustproof

Order No.: PSE-060.100 for D5 PSE 060.000 for D2 (indicate Ø please)

3D Table probe with different ball points



Probe with exchangeable ball point and magnetic base
Dimensions: 50 x 60 x 135 mm
The screwing thread is M4

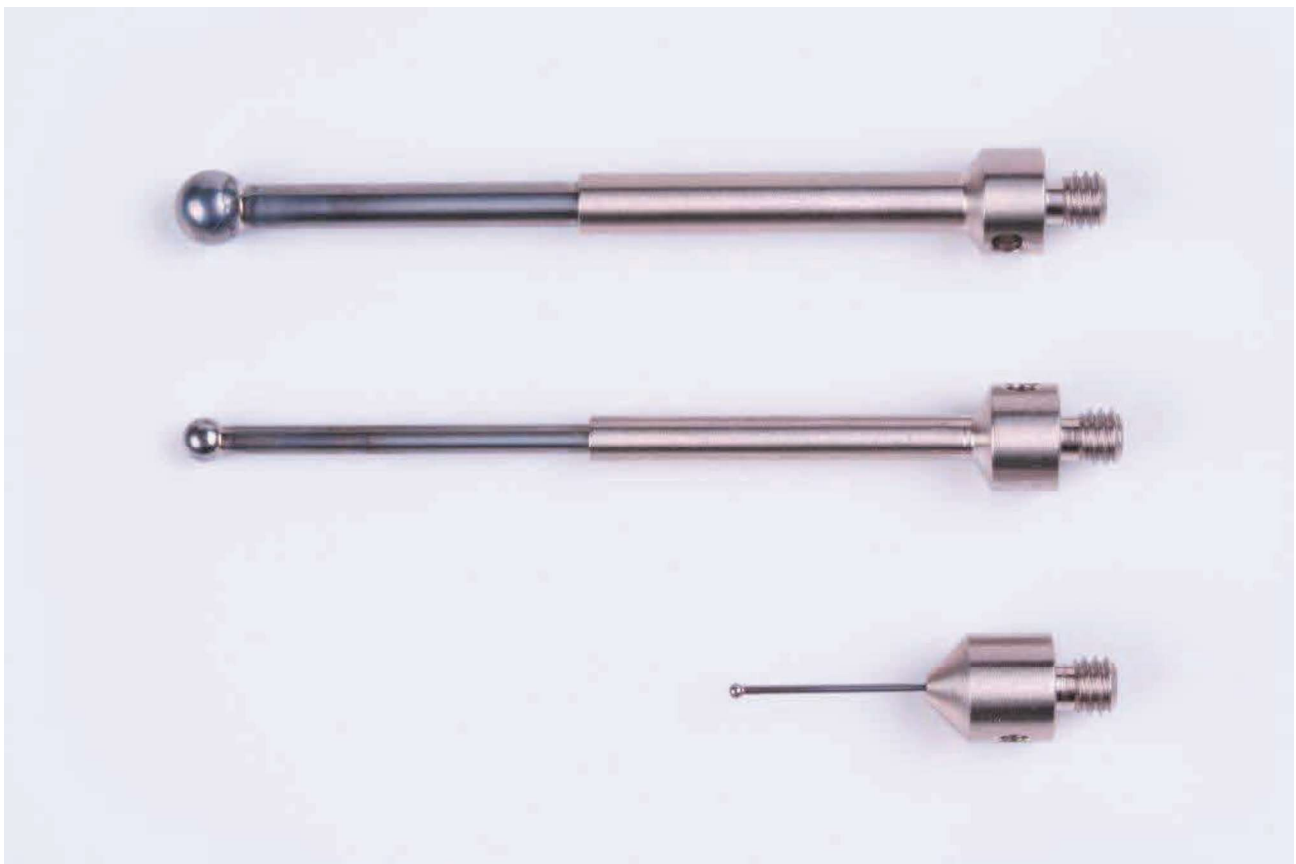
Order No.: PSE-TEWSK Standard D 5 mm

Measuring ball point Ø 5 mm, Length 56 mm Order No.: PSE-TEWSK D 5

Measuring ball point Ø 3 mm, Length 56 mm Order No.: PSE-TEWSK D 3

Measuring ball point Ø 1 mm, Length 20 mm Order No.: PSE-TEWSK D 1

Available diameters: 1 mm, 3 mm and 5 mm



PSE Mandrel gauge short



To align the radial, axial and angular position of the clamping chucks

Dimensions: 50 x 50 x 60 mm

Bore Ø: 20 mm, outer diameter: 40 mm

Material: rustproof, hardened 54 HRC, compatible with ITS®* clamping system of Erowa AG

Order No.: PSE-WMC50-100

PSE Mandrel gauge long



To align the radial, axial and angular position of the clamping chucks

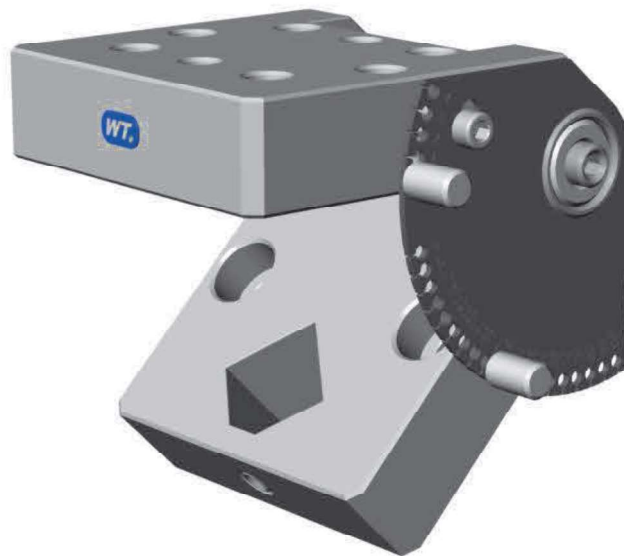
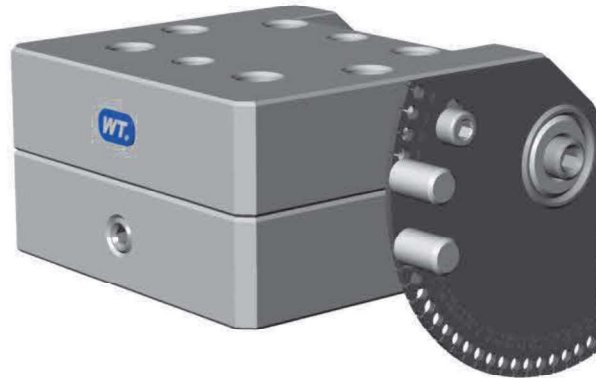
Dimensions: 52 x 52 x 146 mm

Bore Ø: 20 mm, outer diameter: 30 mm

Material: rustproof, hardened 54 HRC, compatible with ITS®* clamping system of Erowa AG

Order No.: PSE-WMC50-146

Sprue holder for Uni panel



Sprue holder for Uni panel 50

Adjustment from 0 to 225°
Clamping option for square or round Ø 15 mm
equipped for chip coding
partition 1°

Material: rustproof, hardened 54 HRC, compatible with ITS®* clamping system of Erowa AG

Order No.: PSE-Nr. WQM50-15

Adapter D72

incl. Screw und Special Clamping Spigot



Screw and Special Clamping Spigot





WR54D72

Dimension: D72 mm x 30 mm
Material: rustproof, hardened 54°HRC
inclusive special clamping spigot with screw

Compatible with ITS®* clamping system of the Erowa AG and Macro®* compatible

Order-No.: PSE-WR54D72

CLAMPING SPIGOT F/A EDM fix



WUC-F/A

Clamping spigot F/A EDM
Dimensions: Ø 20 x 45 mm
Material: rustproof, hardened 50 HRC, compatible with ITS®* clamping system of Erowa AG

Order No.: PSE-WUC-F/A

Square holder WQM 35



Square holder for profile 35 x 35 mm

Repetition accuracy: $\pm 0,003$ mm

Reference height Z: $40 \pm 0,003$ mm

Material: rustproof, hardened 54 HRC, compatible with ITS®* clamping system of Erowa AG

Dimensions: 54 x 54 x 75 mm

Order No.: PSE-WQM35

Square holder WQM 15



WQM15

Square holder for profile 15 x 15 mm

Repetition accuracy $\pm 0,003$ mm

Reference height Z: $40 \pm 0,003$ mm

Material: rustproof, hardened 54 HRC, compatible with ITS®* clamping system of Erowa AG

Dimensions: 52 x 52 x 69 mm

Order No.: PSE-WQM15

Square holder WQM 25



WQM25

Square holder for profile 25 x 25 mm

Repetition accuracy $\pm 0,003$ mm

Reference height Z: $40 \pm 0,003$ mm

Material: rustproof, hardened 54 HRC, compatible with ITS®* clamping system of Erowa AG

Dimensions: 54 x 54 x 75 mm

Order No.: PSE-WQM25

Hydraulic clamping chuck for mini shanks



WQH20

Hydraulic clamping chuck for electrode shanks Ø 20 mm with double hydraulic chambers

Repetition accuracy: $\pm 0,003$ mm

Dimensions: 54 x 54 x 75 mm

Material: rustproof, hardened 54 HRC, compatible with ITS®* clamping system of Erowa AG

Order No.: PSE-WQH20

PSE ALU clamping chuck for shank Ø 20 mm



WHR20 ALU

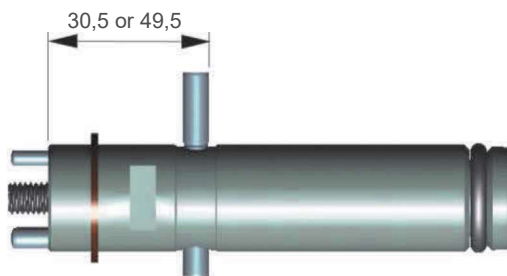
Round holder for shank Ø 20 mm
With stop in for electrode shank and 2 pieces of pressure M8 screws, distance: 12 mm
Dimension: 52 x 52 x 78,5 mm
Bore: Ø 20H7 mm
Material: ALU, compatible with ITS®* clamping system of Erowa AG

Order No.: PSE-WHR20



Electrode shanks Ø 20 mm

Order No.	Diameter	Distance	Quantity	
PSE-S02/20/25	20	25	1 set 30 pieces	
PSE-S02/20/50	20	50	1 set 30 pieces	
PSE-S02/20/100	20	100	1 set 10 pieces	
PSE-S02/20/150	20	150	1 set 10 pieces	
PSE-S05/20/30.5	20	30.5	1 piece	
PSE-S05/20/49.5	20	49.5	1 piece	





**Copper electrode blanks
for square holder WQM**

Dimensions: 15 x 15 x 75, 25 x 25 x 90 mm or indicate other dimensions
(Please request documentation separately)



**Graphite electrode blanks
for square holder WQM**
(Please request documentation separately)



Order No.: PSE-E-BOX20

Plastic box for 20 pieces of electrodes 15 x 15 mm



Order No.: PSE-E-BOX25

Plastic box for 20 pieces of electrodes 25 x 25 mm

Collet chuck

for round electrodes



WER16

Collet chuck for collets ER16 Ø 0,5 to 10 mm
Maximum deviation of concentricity: 0,002 mm
Material: rustproof, hardened 54 HRC, compatible with ITS®* clamping system of Erowa AG
incl. chip carrier
Order No.: PSE-WER16



WER32

Collet chuck for collets ER32 Ø 3 to 20 mm
Maximum deviation of concentricity: 0,002 mm
Material: rustproof, hardened 54 HRC, compatible with ITS®* clamping system of Erowa AG
incl. chip carrier
Order No.: PSE-WER32



WER40

Collet chuck for collets ER40 Ø 4 to 26 mm
Maximum deviation of concentricity: 0,002 mm
Material: rustproof, hardened 54 HRC, compatible with ITS®* clamping system of Erowa AG
incl. chip carrier
Order No.: PSE-WER40



Collet chuck kit ETS32

Collet chuck kit for ER32 Ø 2 to 20 mm, 18 pieces

Collet chucks also individually available

Material: rustproof, hardened 54 HRC, compatible with ITS®* clamping system of Erowa AG

Order No.: PSE-WER32- ETS



Collet chuck kit ER32 for PSE WER32

Collet chuck kit for ER32 Ø 2 to 20 mm, 18 pieces

Collet chucks also individually available

Material: rustproof, hardened 54 HRC, compatible with ITS®* clamping system of Erowa AG

Order No.: PSE-WER32- PSE



Collet chuck kit ER16 for PSE WER16

Collet chuck kit for ER16 Ø 0,5 to 10 mm, 10 pieces

Collet chucks also individually available

Material: rustproof, hardened 54 HRC, compatible with ITS®* clamping system of Erowa AG

Order No.: PSE-WER16-PSE

Collet Holder SET ER-16



Single Components

Collet Chuck Kit for ER16 Ø 0,5 to 10 mm, 10 pieces

Collets also available as single parts

Material: rustproof, hardened 54 HRC

Compatible with ITS®* clamping system of the Erowa AG

Collet Chuck for ER16 Ø 0,5 to 10 mm

Maximum concentricity deviation: 0,002 mm

Dimension: 54 x 54 x 85 mm

Material: rustproof, hardened 54°HRC

including chip reception

Compatible with ITS®* clamping system of the Erowa AG

Clamping Spigot F/A EDM

Dimension: Ø 20 x 45 mm

Material: rustproof, hardened 50 HRC

Compatible with ITS®* clamping system of the Erowa AG

Sealing Rubber ER16, 20 pieces

Hook Spanner ER 16

Order-No.: PSE-WER16-PSE SET

Collet Holder SET ER-32



Single Components

Collet Chuck Kit for ER32 Ø 0,5 to 10 mm, 18 pieces

Collets also available as single parts

Material: rustproof, hardened 54 HRC

Compatible with ITS®* clamping system of the Erowa AG

Collet Holder for ER32 Ø 3 to 20 mm

Maximum concentricity deviation: 0,002 mm

Dimension: 54 x 54 x 87 mm

Material: rustproof, hardened 54 HRC

including chip reception

Compatible with ITS®* clamping system of the Erowa AG

Clamping Spigot F/A EDM

Dimension: Ø 20 x 45 mm

Material: rustproof, hardened 50 HRC

Compatible with ITS®* clamping system of the Erowa AG

Sealing Rubber ER32, 20 pieces

Hook Spanner ER 32

Order-No.: PSE-WER32-PSE SET

Collet Holder SET ETS-32



Single Components

Collet Chuck Kit ETS for ER32 Ø 0,5 to 10 mm, 18 pieces

Collets also available as single parts

Material: rustproof, hardened 54 HRC

Compatible with ITS®* clamping system of the Erowa AG

Collet Holder for Collet Chuck ER32 Ø 3 to 20 mm

Maximum concentricity deviation: 0,002 mm

Dimension: 54 x 54 x 87 mm

Material: rustproof, hardened 54 HRC

including chip reception

Compatible with ITS®* clamping system of the Erowa AG

Clamping Spigot F/A EDM

Dimension: Ø 20 x 45 mm

Material: rustproof, hardened 54 HRC

Compatible with ITS®* clamping system of the Erowa AG

Sealing Rubber ER32, 20 pieces

Hook Spanner ER 32

Order-No.: PSE-WER32-ETS PSE SET

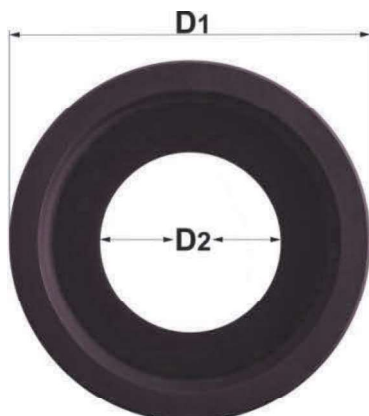


Collet Chuck Kit ETS32

Collet Chuck Kit for ER32 Ø 2 to 20 mm, 18 pieces
Collets also available as single parts
Material: rustproof, hardened 54 HRC
Compatible with ITS®* clamping system of the Erowa AG

Special Clamping Nut for ETS Collet Chucks suitable for Collet Holder PSE-WER32

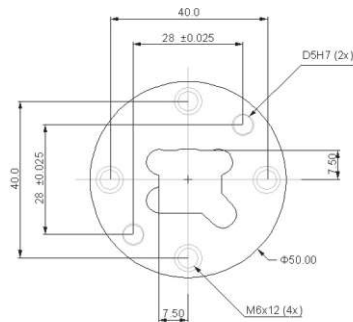
D1: 50 mm
D2: 28 mm



PSE SQUARE 15 and/or 25 mm CLAMPING SYSTEM

Two types of square front parts available: 15 and 25 square

PSE SQUARE 15 mm



WQ15

VIEW TOP

PSE-WQ15

Square front part 15 mm
Material: rustproof, hardened 54 HRC
Dimensions: $\varnothing 50 \times 32$ mm

Order No.: PSE-WQ15

Square front part 15mm Ø 60 mm INOX
Screwable from above and below



PSE-WQ15 D60

Square front part 15 mm
Material: rustproof, hardened 54 HRC
Dimensions: Ø 60 x 30 mm
Counterbore for screwing M6 and/or thread M8 from the back
Alignment pins Ø 5 mm from the back
Order No.: PSE-WQ15 D 60

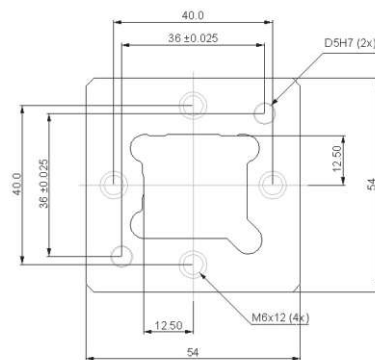
Square front part 25mm Ø 70mm INOX
Screwable from above and below



PSE-WQ25 D 70

Square front part 25 mm
Material: rustproof, hardened 54 HRC
Dimensions: Ø 70 x 30 mm
Counterbore for screwing M6 and/or thread M8 from the back
Alignment pins Ø 5 mm from the back
Order No.: PSE-WQ25 D 70

PSE SQUARE 25 mm



WQ25

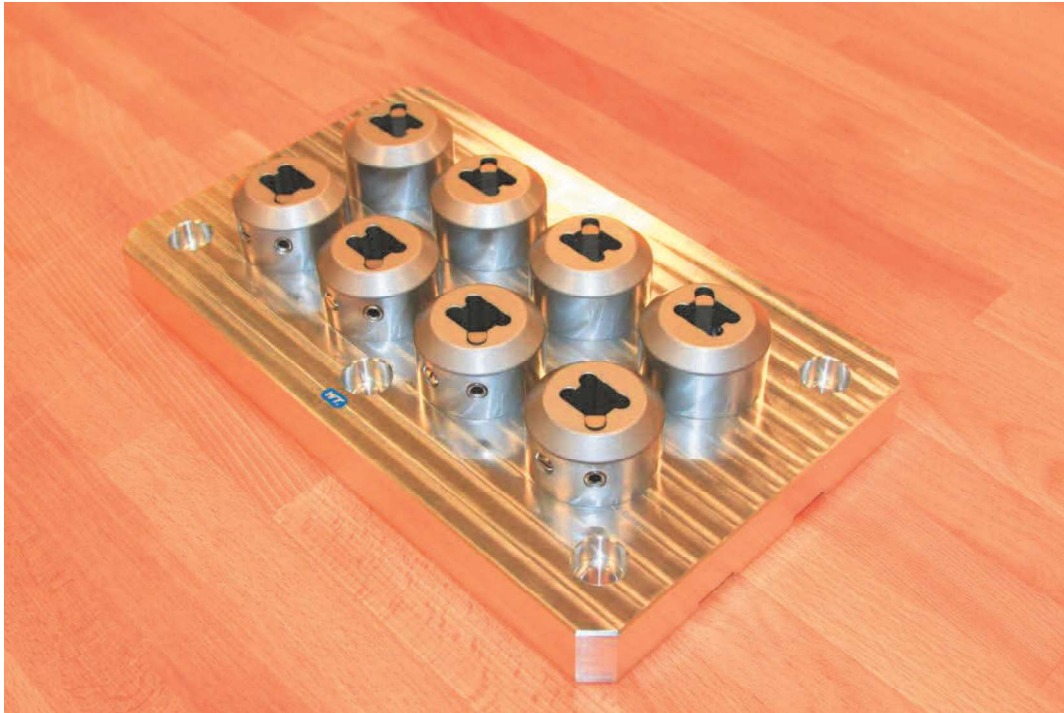
VIEW TOP

PSE-WQ25

Square front part 25 mm
Material: rustproof, hardened 54 HRC
Dimensions: 54 x 54 x 36 mm

Order No.: **PSE-WQ25**

Milling pallet with front part 15 x 15 mm
For machining operation



High-strength ALU for 4 pieces of collets

Dimensions: 200 x 200 x 30 mm

High-strength ALU for 8 pieces of collets

Dimensions: 300 x 180 x 30 mm

Rustproof, hardened and polished steel for 6 pieces of collets Dimensions: 250 x 175 x 30 mm

Rustproof, hardened and polished steel for 6 pieces of collets Dimensions: 300 x 200 x 35 mm

Order No.: PSE-WQ15/200-30 ALU

Order No.: PSE-WQ15/300-30 ALU

Order No.: PSE-WQ15/250-30 Steel

Order No.: PSE-WQ15/300-35 Steel

Including reference bore and reference area for alignment.

When placing an order, always indicate the size of the T-groove distance of the milling machine, please.

Milling pallet with front part 25 x 25 mm

For machining operation



High-strength ALU for 4 pieces of collets

Dimensions: 200 x 200 x 30 mm

High-strength ALU for 8 pieces of collets

Dimensions: 300 x 180 x 30 mm

Rustproof, hardened and polished steel for 6 pieces of collets Dimensions: 250 x 175 x 30 mm

Rustproof, hardened and polished steel for 6 pieces of collets Dimensions: 300 x 200 x 35 mm

Order No.: PSE-WQ25/200-30 ALU

Order No.: PSE-WQ25/300-30 ALU

Order No.: PSE-WQ25/250-30 Stahl

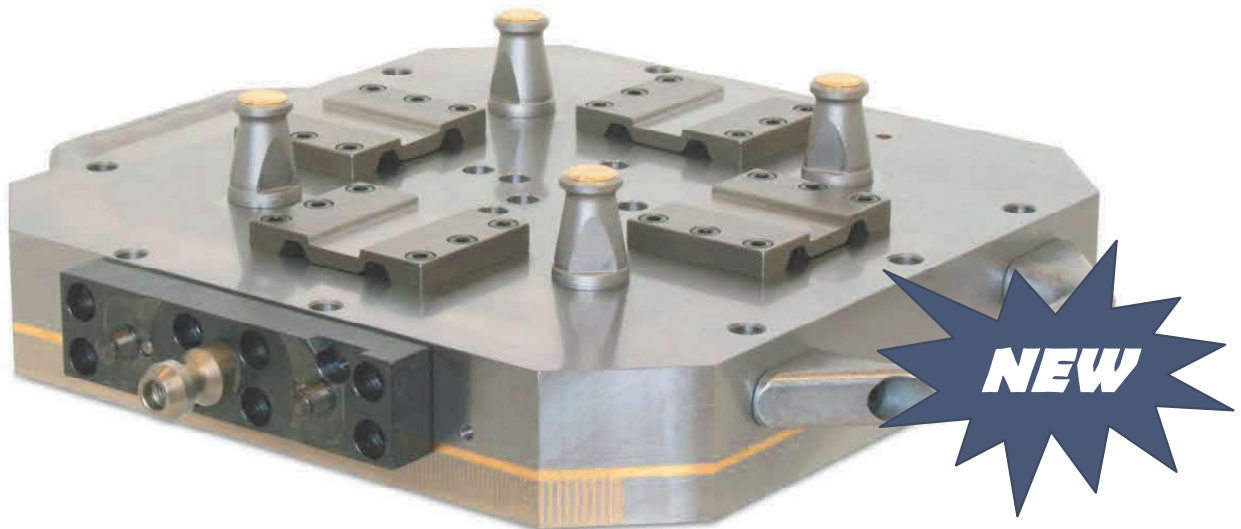
Order No.: PSE-WQ25/300-35 Stahl

Including reference bore and reference area for alignment

When placing an order, always indicate the size of the T-groove distance of the milling machine, please.

Pallet

Special flat design including magnetic plate for automation



Technical data

Pallet including magnetic clamping plate **New basic body ALU**

Dimensions: 321 x 321 x 48 mm

Weight: 29 kg

Centering elements directly mounted on magnet, including gripper link and grips
Permanent magnetic clamping plate for high precision grinding and eroding works

Also suitable for light milling

Holding force approx. 100 N/cm²

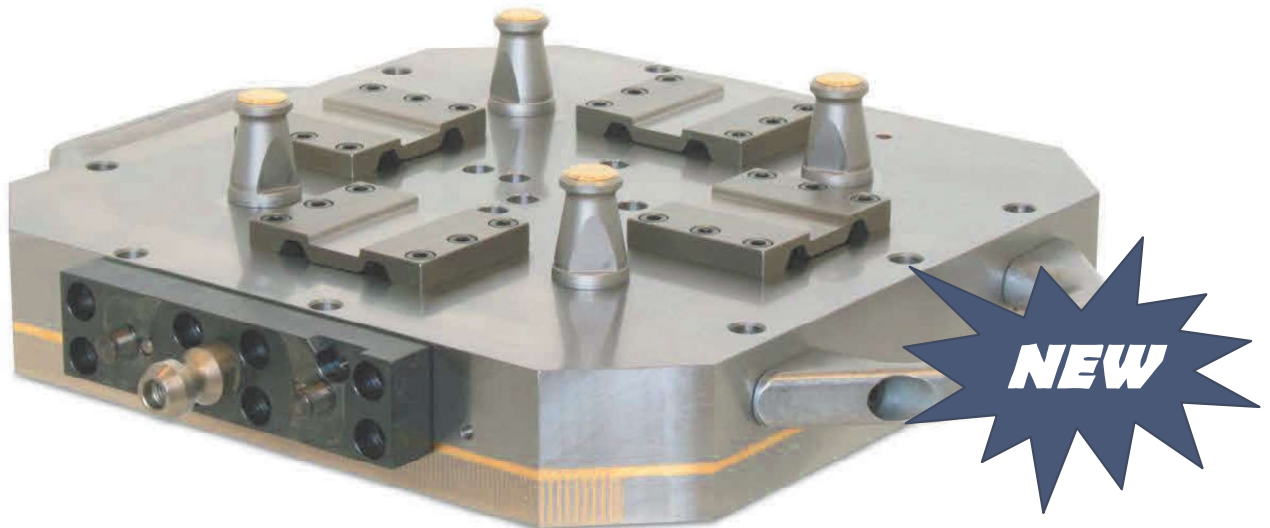
Transverse pole partition: 1,4+0,5 mm, corners 40 mm x 45°

Drilling pattern for automation (gripper coupling attached), compatible with UPC®* clamping system of Erowa AG

Order No.: PSE- Pallet EDM

Pallet

Special flat design including magnetic plate for automation (milling)



Technical data

Pallet including magnetic clamping plate steel

Dimensions: 321 x 321 x 48 mm

Weight: 38 kg

Centering elements directly mounted on magnet, including gripper link and grips

Permanent magnetic clamping plate for high precision milling

Holding force: approx. 150 N/cm²

Transverse pole partition: 11+4 mm, corners 40 mm x 45°

Drilling pattern for automation (gripper coupling attached), compatible with UPC®* clamping system of Erowa AG

Order No.: PSE- Pallet Milling



PALLET ALU



Technical Data Pallet ALU

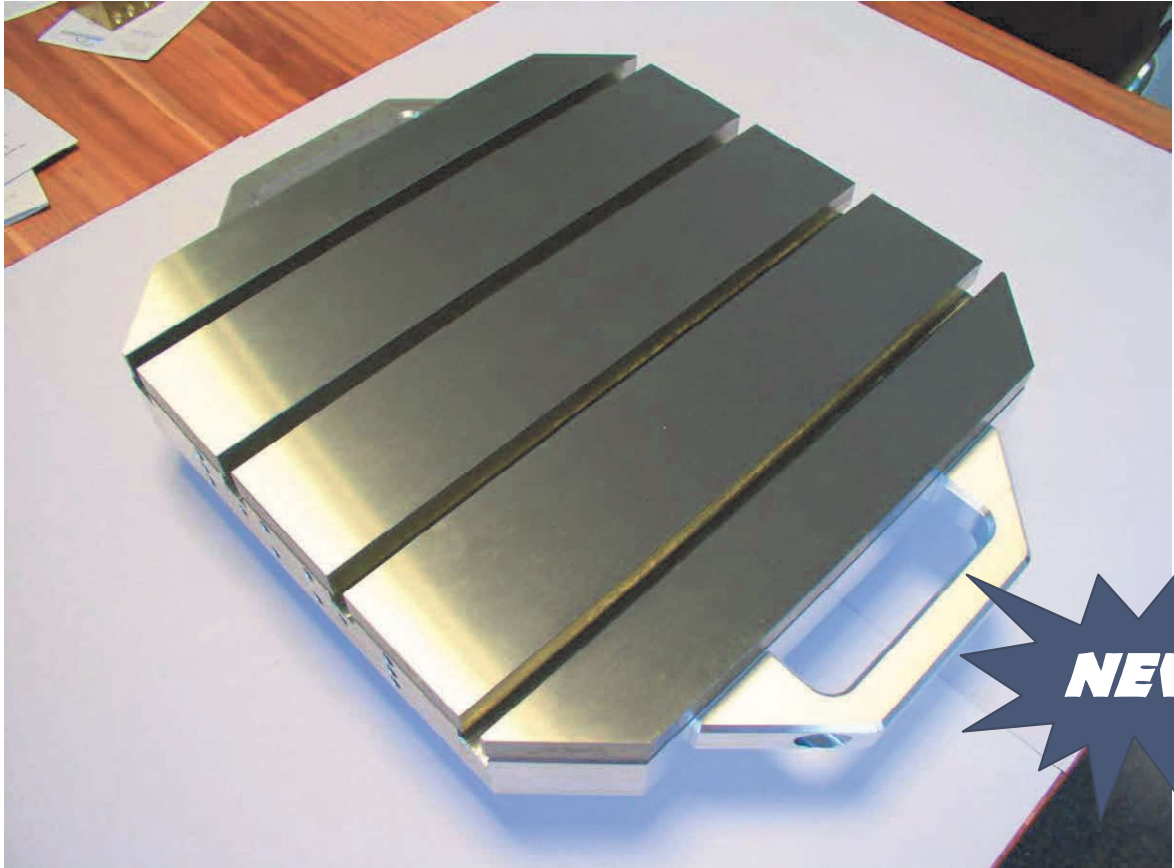
Dimensions 320 x 320 x 40 mm

Incl. centering elements, clamping spigot and hardened Z-supports, compatible with UPC®* clamping system of Erowa AG

Order No.: PSE- Pallet 320

T- Notch Pallet

Hardened steel plate version



Technical Data Pallet ALU

Pallet with hardened steel plate and polished T-notch

Dimensions: 321 x 321 x 50 mm

Incl. centering elements, clamping spigot and hardened Z-supports

Incl. 4 pieces of T-notches 10H7 mm, distance 75 mm, compatible with UPC®* clamping system of Erowa AG

Order No.: PSE- Pallet T-Notch 10H7

Raster Pallet

Version including thread M12 and bores \varnothing 12F7



Technical Data Pallet ALU Pallet

Including thread steel inserts M12 and raster bores \varnothing 12F7 mm, distance 50 mm

Dimensions: 321 x 321 x 40 mm

Incl. centering elements, clamping spigot and hardened Z-supports, compatible with UPC®* clamping system of Erowa AG

Order No.: PSE Pallet Raster 12F7

Coupling element for Pallets



WMC-150

Coupling element for pallets compatible incl. screws and clamping spigot
Dimensions: 150 x 38 x 20 mm

Material: rustproof, compatible with UPC®* clamping system of Erowa AG

Order No.: PSE Coupling

Grips for pallets



Grips-195

Grips for pallets incl. screws M8 x 30 mm, compatible with UPC®* clamping system of Erowa AG
Dimensions: 195 x 50 x 20 mm

Order No.: PSE- Grips

PSE 16-fold SQUARE 15 mm



PSE-16-fold Holder 15

16 pieces of square front parts 15 mm
Material: rustproof, hardened 54 HRC
Base plate: ALU, compatible with UPC®* clamping system of Erowa AG
Dimensions: 320 x 320 x 72 mm

Order No.: PSE-16-fold WQ15

PSE 16-fold SQUARE 25 mm

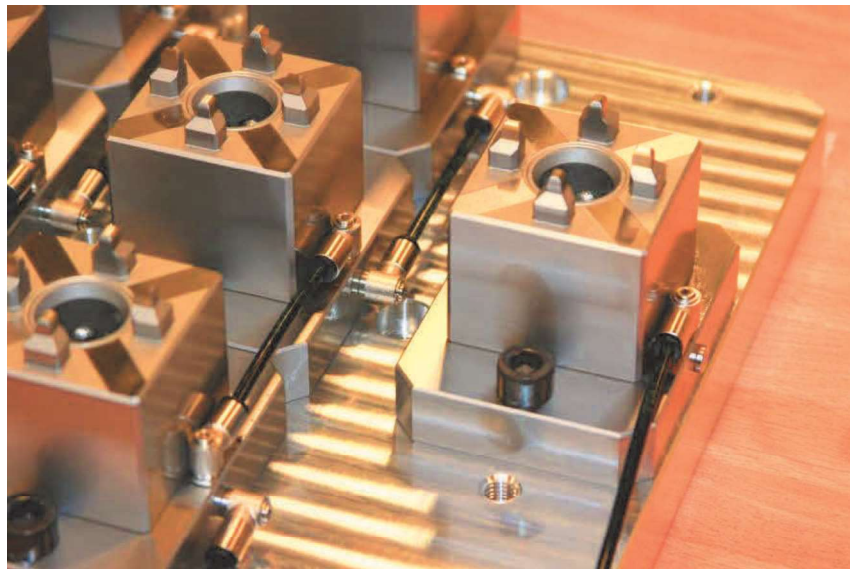
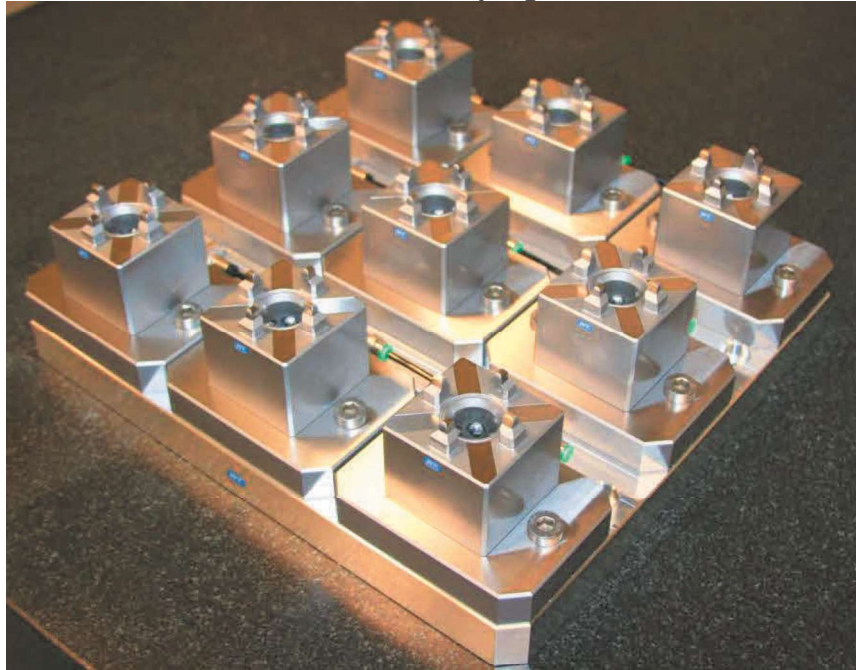


PSE-16-fold Holder 25

16 pieces of square front parts 25 mm
Material: rustproof, hardened 54 HRC
Base plate: ALU, compatible with UPC®* clamping system of Erowa AG
Dimensions: 320 x 320 x 76 mm

Order No.: PSE-16-fold WQ25

PSE 9-fold Clamping Chuck



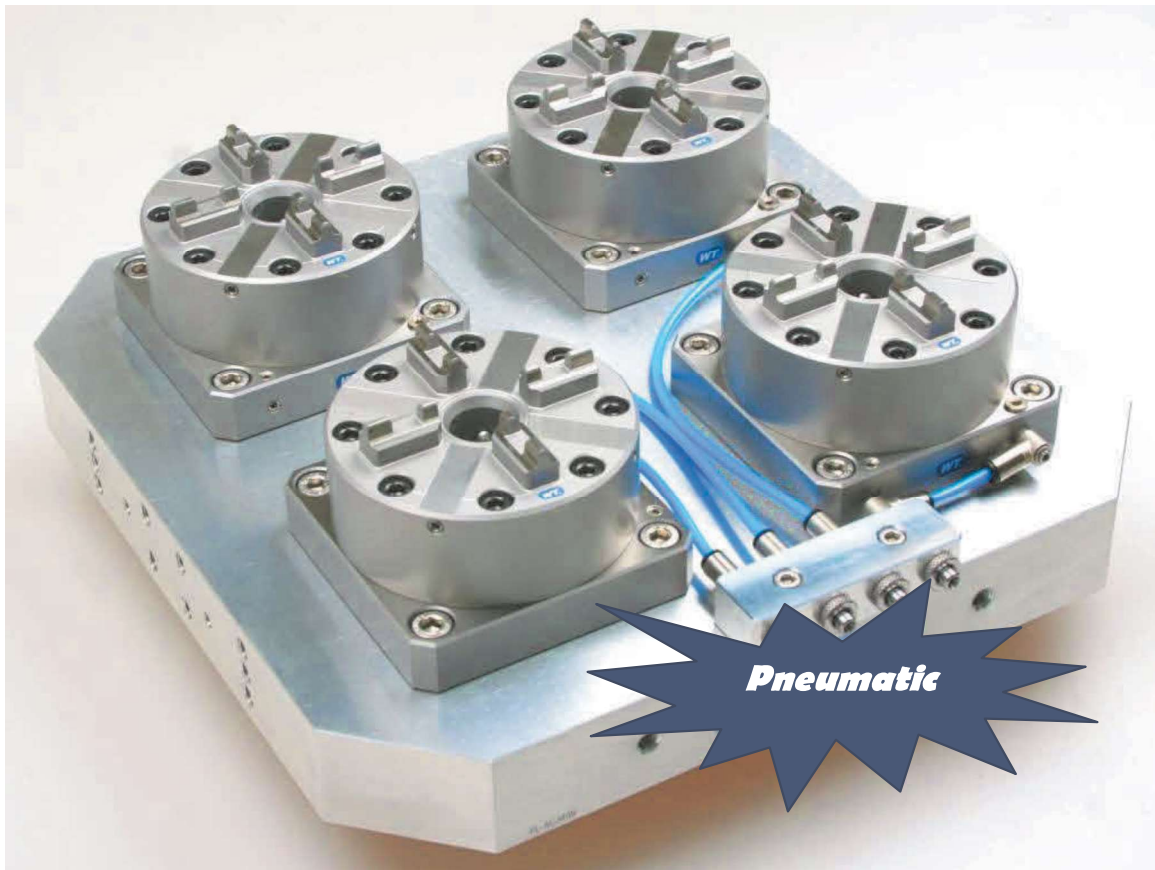
PSE-9-fold clamping chuck

9 pieces of PSE- clamping chuck
Material: rustproof, hardened 54 HRC
Base plate: ALU, compatible with UPC®* clamping system of Erowa AG
Dimensions: 306 x 306 x 65 mm
Dimension 65 mm suitable for Z 0

Order No.: PSE-9-fold

Pallet

Incl. 4 pieces of WPU100D clamping chuck



Technical Data

Pallet incl. 4 pieces of clamping chuck WPU100D

Dimensions: 320 x 320 x 40 mm (only pallet)

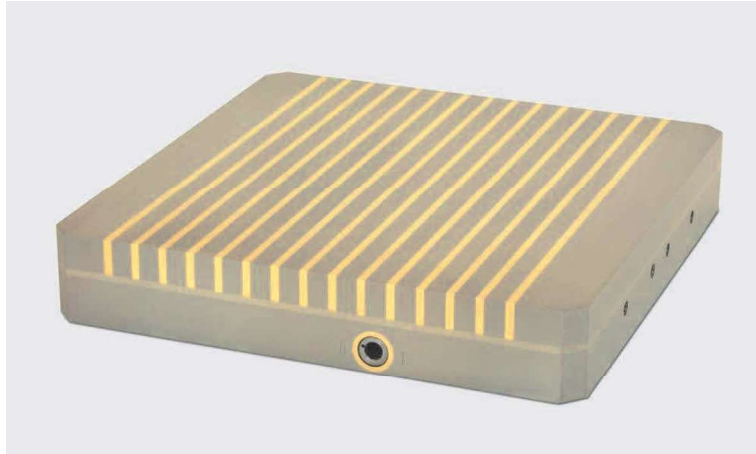
Total height: 109 mm (pallet incl. clamping chuck)

Height Z-support 56 mm, compatible with UPC®* clamping system of Erowa AG

4 pieces of clamping chuck WPU100D any of them separately controllable

Order No.: PSE- Pallet WPU100D-4

Permanent Magnetic Clamping Plate 321 x 321 x 40 mm

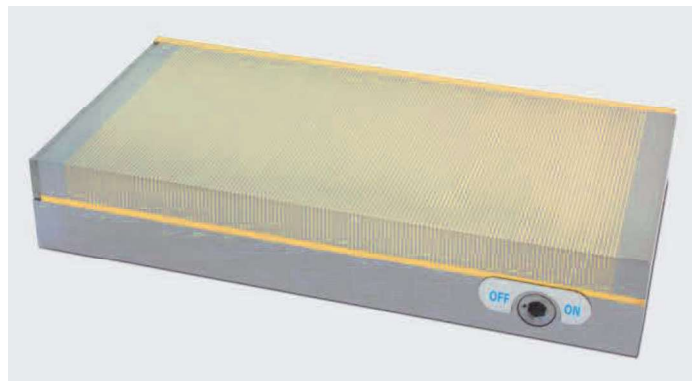


Technical Data

Permanent Magnetic Clamping Plate for high precision grinding and eroding
Also suitable for light milling
Holding force: approx. 100 N/cm²
Transverse pole partition: 1,4+0,5 mm
Dimensions: 321 x 321 x 60 mm, corners 40 mm x 45°
Designed for mounting on pallets or for direct insertion of reference elements

Order No.: PSE-Magnetic Clamping Plate 321x321x40

Permanent Magnetic Clamping Plate 300 x 150 x 51 mm

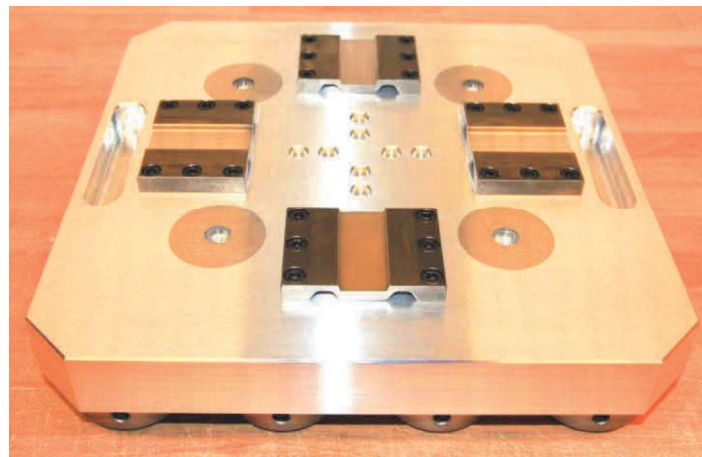


Technical Data

Permanent Magnetic Clamping Plate for high precision grinding and eroding
Also suitable for light milling
Holding force: approx. 100 N/cm²
Transverse pole partition: 1,4+0,5 mm
Dimensions: 300 x 150 x 51 mm
Designed for mounting on pallets

Order No.: PSE-Magnetic Clamping Plate 300x150x51

Pallet incl. 4 pieces of Clamping Chuck WMC100

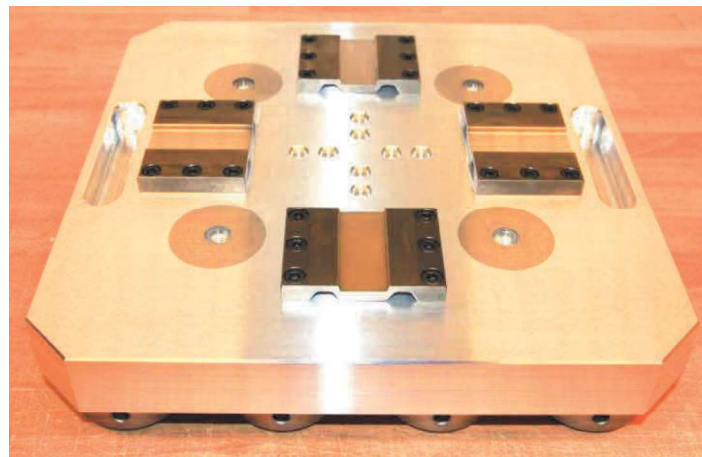


PSE-4-fold clamping chuck

4 pieces of PSE-clamping chuck WMC100
Material: rustproof, hardened 54 HRC
Base plate: ALU, compatible with UPC®* clamping system of Erowa AG
Dimensions: 320 x 320 x 76 mm
76 mm dimension suitable for Z 0

Order No.: PSE- WMC- 4

Pallet SQUARE 15 - 25 mm
16-fold screwing from above



PSE-16-fold holder 15 or 25

8 pieces of square front parts 15 mm

8 pieces of square front parts 25 mm

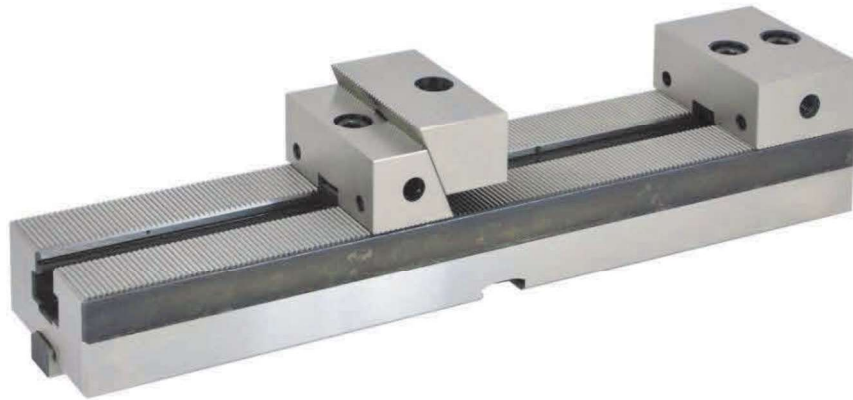
Material: rustproof, hardened 54 HRC

Base plate: ALU, compatible with UPC®* clamping system of Erowa AG

Dimensions: 320 x 320 x 72 mm

Order No.: PSE- Pallet Square WQ15 and WQ25

PSE Clamping Rail 320 mm Clamping range from 0 to 220 mm

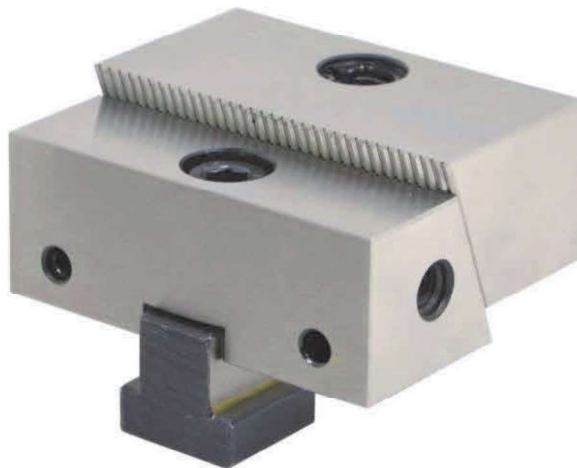


PSE-PSE-601/T2x320

Hardened and polished steel design
Base support with 2 mm positioning grid
Clamping range: 0 to 220 mm
Screwing with M8 screws, raster hole distance 80 mm through T-notch
Suitable for mounting on pallets or direct mounting on the machine table
Dimension: 320 x 70 x 61 mm

Order No.: PSE-601/T2x320-Set

PSE Flexible Clamping Jaw for Clamping Rail incl. T-slot nut



PSE-PSE-604/T2

Hardened and polished steel design incl. T-slot nut
Clamping areas of the workpiece must have been processed
Usable for clamping rails 300 mm
Dimension: 70 x 58 x 27,4 mm

Order No.: PSE-604/T2

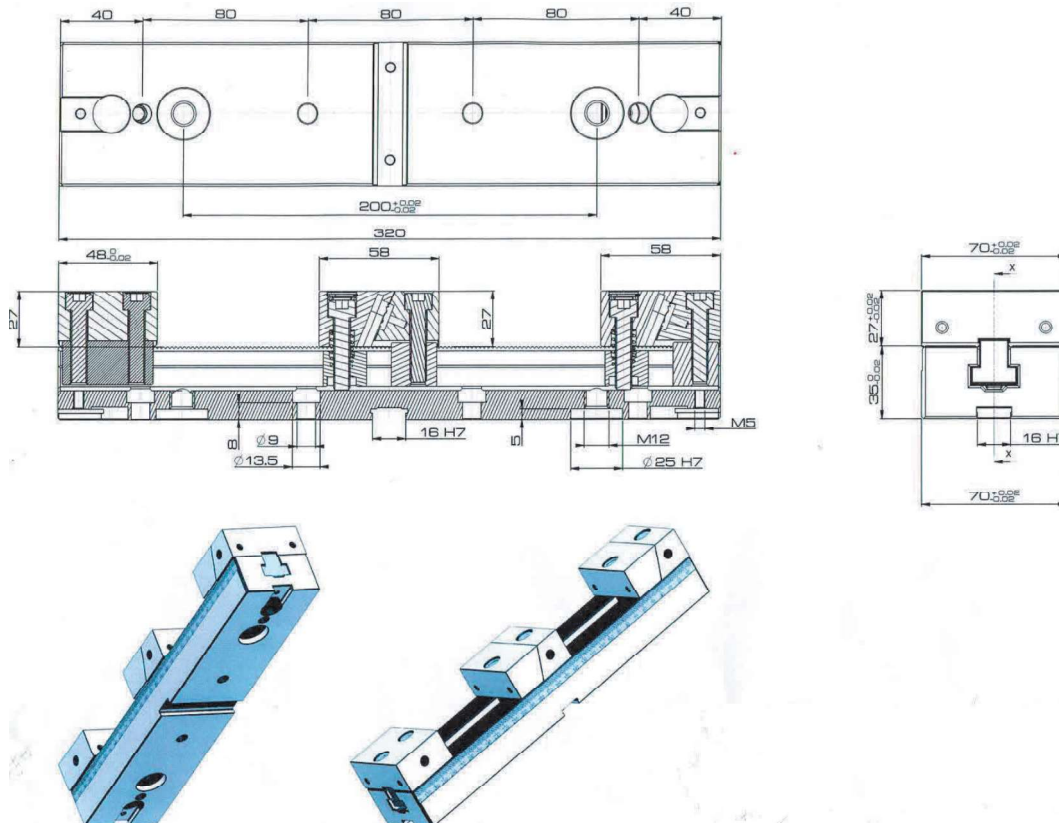
PSE Fixed clamping jaw for clamping rail incl. T-slot nut

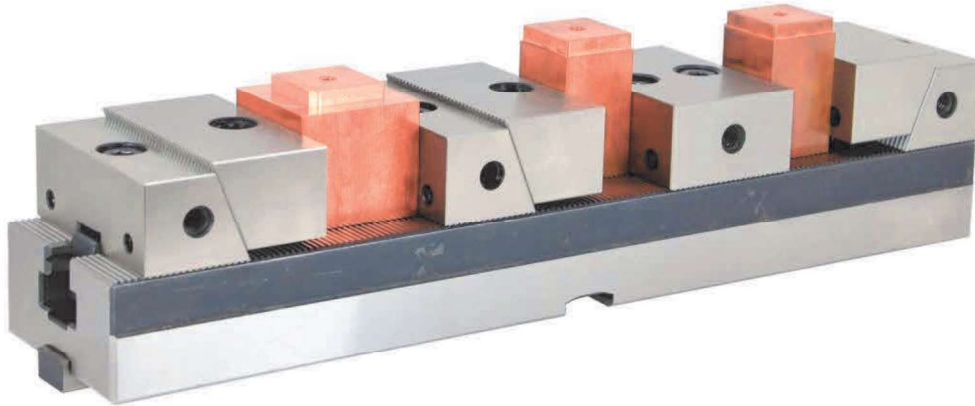


PSE-PSE-605/T2

Hardened and polished steel design incl. T-slot nut
Clamping areas of the workpiece must have been processed
Usable for clamping rails 320 mm
Dimension: 70 x 48 x 27,4 mm

Order No.: PSE-605/T2





PSE Clamping Rail incl. 3 workpieces



PSE clamping rail 320 mm prepared with notches 16 H7 mm and fitting bores \varnothing 25 H7 mm screwing through T – notch 4 times distance 80 mm for M8 screws

Uni Panel and/or Uni Blank ALU

	Uni panel compatible with ITS® clamping system of Erowa AG 2 x bores Ø 6,5 mm, distance 40 mm for M6 screws incl. 2 screws M6 x 20 mm				
	Order No.	Dimension	Material	Packing Unit	
	PSE-001-000	50,5 x 50,5 x 41 mm	EN AW7075	16 pieces	
	Uni panel incl. chip carrier compatible with ITS® clamping system of Erowa AG 2 x bores Ø 6,5 mm, distance 40 mm for M6 screws incl. 2 screws M6 x 20 mm				
	Order No.	Dimension	Material	Packing Unit	
	PSE-001-100	50,5 x 50,5 x 41 mm	EN AW7075	16 pieces	
	Uni panel incl. chip carrier compatible with ITS® clamping system of Erowa AG 2 x bores Ø 6,5 mm, distance 40 mm for M6 screws incl. 2 screws M6 x 20 mm				
	Order No.	Dimension	Material	Packing Unit	
	PSE-001-200	50,5 x 50,5 x 41 mm	EN AW7075	16 pieces	
	Uni blank compatible with ITS® clamping system of Erowa AG				
	Order No.	Dimension	Material	Packing Unit	
	PSE-008-000	50,5 x 50,5 x 41 mm	EN AW7075	16 pieces	
	Uni blank incl. chip carrier compatible with ITS® clamping system of Erowa AG				
	Order No.	Dimension	Material	Packing Unit	
	PSE-008-100	50,5 x 50,5 x 41 mm	EN AW7075	16 pieces c	
	Uni blank incl. chip carrier compatible with ITS® clamping system of Erowa AG				
	Order No.	Dimension	Material	Packing Unit	
	PSE-008-200	50,5 x 50,5 x 41 mm	EN AW7075	16 pieces	

Square holder ALU


	Square holder 15 compatible with ITS®* clamping system of Erowa AG square 15 x 15 x 20 mm, square 16,5 mm milled out				
	Order No.	Dimension	Material	Packing Unit	
	PSE-002-000	50,5 x 50,5 x 41 mm	EN AW7075	16 pieces	
	Square holder 15 incl. chip carrier compatible with ITS®* clamping system of Erowa AG square 15 x 15 x 20 mm, square 16,5 mm milled out				
	Order No.	Dimension	Material	Packing Unit	
	PSE-002-100	50,5 x 50,5 x 41 mm	EN AW7075	16 pieces	
	Square holder 15 incl. chip carrier compatible with ITS®* clamping system of Erowa AG square 15 x 15 x 20 mm, square 16,5 mm milled out				
	Order No.	Dimension	Material	Packing Unit	
	PSE-002-200	50,5 x 50,5 x 41 mm	EN AW7075	16 pieces	
	Square holder 20 compatible with ITS®* clamping system of Erowa AG square 20 x 20 x 20 mm, square 21,5 mm milled out				
	Order No.	Dimension	Material	Packing Unit	
	PSE-003-000	50,5 x 50,5 x 41 mm	EN AW7075	16 pieces	
	Square holder 20 incl. chip carrier compatible with ITS®* clamping system of Erowa AG square 20 x 20 x 20 mm, square 21,5 mm milled out				
	Order No.	Dimension	Material	Packing Unit	
	PSE-003-100	50,5 x 50,5 x 41 mm	EN AW7075	16 pieces	
	Square holder 20 incl. chip carrier compatible with ITS®* clamping system of Erowa AG square 20 x 20 x 20 mm, square 21,5 mm milled out				
	Order No.	Dimension	Material	Packing Unit	
	PSE-003-200	50,5 x 50,5 x 41 mm	EN AW7075	16 pieces	
	Square holder 25 compatible with ITS®* clamping system of Erowa AG square 25 x 25 x 20 mm, square 26,5 mm milled out				
	Order No.	Dimension	Material	Packing Unit	
	PSE-004-000	50,5 x 50,5 x 41 mm	EN AW7075	16 pieces	

	Square holder 25 incl. chip carrier compatible with ITS®* clamping system of Erowa AG square 25 x 25 x 20 mm, square 26,5 mm milled out				
	Order No.	Dimension	Material	Packing Unit	
	PSE-004-100	50,5 x 50,5 x 41 mm	EN AW7075	16 pieces	
	Square holder 25 incl. chip carrier compatible with ITS®* clamping system of Erowa AG square 25 x 25 x 20 mm, square 26,5 mm milled out				
	Order No.	Dimension	Material	Packing Unit	
	PSE-004-200	50,5 x 50,5 x 41 mm	EN AW7075	16 pieces	
	Square holder 30 compatible with ITS®* clamping system of Erowa AG square 30 x 30 x 20 mm, square 31,5 mm milled out				
	Order No.	Dimension	Material	Packing Unit	
	PSE-005-000	50,5 x 50,5 x 41 mm	EN AW7075	16 pieces	
	Square holder 30 incl. chip carrier compatible with ITS®* clamping system of Erowa AG square 30 x 30 x 20 mm, square 31,5 mm milled out				
	Order No.	Dimension	Material	Packing Unit	
	PSE-005-100	50,5 x 50,5 x 41 mm	EN AW7075	16 pieces	
	Square holder 30 incl. chip carrier compatible with ITS®* clamping system of Erowa AG square 30 x 30 x 20 mm, square 31,5 mm milled out				
	Order No.	Dimension	Material	Packing Unit	
	PSE-005-200	50,5 x 50,5 x 41	EN AW7075	16 pieces	


Uni holder ALU


	Uni holder 10 compatible with ITS®* clamping system of Erowa AG slot 10,5 x 12,5 mm				
	Order No.	Dimension	Material	Packing Unit	
	PSE-006-000	50,5 x 50,5 x 41 mm	EN AW7075	16 pieces	
	Uni holder 10 incl. chip carrier compatible with ITS®* clamping system of Erowa AG slot 10,5 x 12,5 mm				
	Order No.	Dimension	Material	Packing Unit	
	PSE-006-100	50,5 x 50,5 x 41 mm	EN AW7075	16 pieces	
	Uni holder 10 incl. chip carrier compatible with ITS®* clamping system of Erowa AG slot 10,5 x 12,5 mm				
	Order No.	Dimension	Material	Packing Unit	
	PSE-006-200	50,5 x 50,5 x 41 mm	EN AW7075	16 pieces	
	Uni holder 20 compatible with ITS®* clamping system of Erowa AG slot 20,5 x 12,5 mm				
	Order No.	Dimension	Material	Packing Unit	
	PSE-007-000	50,5 x 50,5 x 41 mm	EN AW7075	16 pieces	
	Uni holder 20 incl. chip carrier compatible with ITS®* clamping system of Erowa AG slot 20,5 x 12,5 mm				
	Order No.	Dimension	Material	Packing Unit	
	PSE-007-100	50,5 x 50,5 x 41 mm	EN AW7075	16 pieces	
	Uni holder 20 incl. chip carrier compatible with ITS®* clamping system of Erowa AG slot 20,5 x 12,5 mm				
	Order No.	Dimension	Material	Packing Unit	
	PSE-007-200	50,5 x 50,5 x 41 mm	EN AW7075	16 pieces	

Round holder ALU


	Round holder 10 incl. chip carrier compatible with ITS®* clamping system of Erowa AG Bore Ø 10H7 x 20 mm			
	Order No.	Dimension	Material	Packing Unit
	PSE-009-100	50,5 x 50,5 x 65 mm	EN AW7075	2 pieces


Uni Panel 80 mm ALU

	Uni panel 80 compatible with ITS®* clamping system of Erowa AG 4 x bores Ø 6,5 mm, distance 65 mm for screws M6			
	Order No.	Dimension	Material	Packing Unit
	PSE-010-000	80 x 80 x 40 mm	EN AW7075	4 pieces


	Uni panel incl. chip carrier compatible with ITS®* clamping system of Erowa AG 4 x bores Ø 6,5 mm, distance 64 x 38 mm for screws M6			
	Order No.	Dimension	Material	Packing Unit
	PSE-010-100	80 x 80 x 40 mm	EN AW7075	4 pieces

Custom-made designs ALU


	Square holder 15 incl. chip carrier compatible with ITS®* clamping system of Erowa AG square 15 x 15 x 20 mm, square 16,5 mm milled out			
	Order No.	Dimension	Material	Packing Unit
	PSE-002-400	50,5 x 50,5 x 61 mm	EN AW7075	6 pieces

	Uni panel incl. chip carrier compatible with ITS®* clamping system of Erowa AG 2 x Bores Ø 6,5 mm, distance 40 mm for M6 screws			
	Order No.	Dimension	Material	Packing Unit
	PSE-001-400	50,5 x 50,5 x 61 mm	EN AW7075	6 pieces

Square holder WQMC-ALU 15x15 mm incl. chip carrier


	Square holder 15 incl. chip carrier compatible with ITS®* clamping system of Erowa AG square 15x15 mm square coordinates ground repetition accuracy $\pm 0,003$ mm reference height Z-support $\pm 0,003$ mm				
	Order No.	Dimension	Material	Packing Unit	
	PSE-WQMC-15	52 x 52 x 69 mm	EN AW7075	2 pieces	

Square holder WQMC-ALU 25x25 mm incl. chip carrier

	Square holder 25 incl. chip carrier compatible with ITS®* clamping system of Erowa AG square 25x25 mm square coordinates ground repetition accuracy $\pm 0,003$ mm reference height Z-support $\pm 0,003$ mm				
	Order No.	Dimension	Material	Packing Unit	
	PSE-WQMC-25	52 x 52 x 75 mm	EN AW7075	2 pieces	

Square holder WQMC ALU incl. chip carrier has the same dimension as WQM rustproof square holder and are especially appropriate for graphite processing

Electrode stand

	Electrode stand for storage and/or transport for 20 pieces of electrode holders compatible with ITS®* clamping system of Erowa AG				
	Order No.	Dimension	Material	Packing Unit	
	PSE-029-200	360 x 259 mm	Plastic	1 piece	

Technical Data Certal *®

Alloy	AlZn5Mg3Cu
Alloy type	Special type 7022*
Material condition	hardened
	T652, slackened by elongation
Surface	Rolling skin
*Special type	

Material Properties

- High core strength
- Good dimensional stability (by compression)
- Very good polishing properties
- Very good workability

Technological Properties

Machinability	very good
Welding works	good (resistance welding)
	Medium welding ability*: (MIG/WIG)
Anodic oxidisability	good
Sanding properties	very good
Hard chrome-plating, nickel-plating, texture-cauterization	good
Corrosion resistance	average

* given appropriate preheating / welding additives AA 5183 or 5356

Areas of Application

- Highly stressed machine part
- Production of injection and blow moulding for bottles and containers

Typical Mechanical Properties

Yield strength $R_{p0.2}$	[Mpa]	480
Tensile strength R_m	[Mpa]	540
Fracture elongation A	[%]	8**
Brinell hardness HBW	HBW [2,5/ 62,5]	160

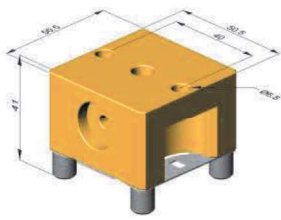
** Fracture elongation A50

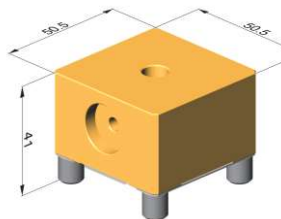
Typical Physical Properties

Density	[g/cm ³]	2,76
Elastic module	[GPa]	72
Electrical conductivity	[m/Ω · mm ²]	18-22
Thermal expansion coefficient	[K ⁻¹]	23,3x10 ⁻⁶
Thermal conductivity	[W/m · K]	120-150
Specific heat capacity	[J/kg · K]	862

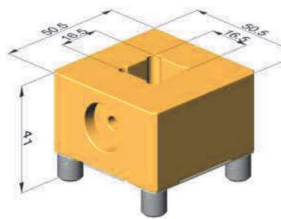
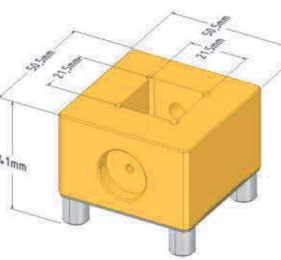
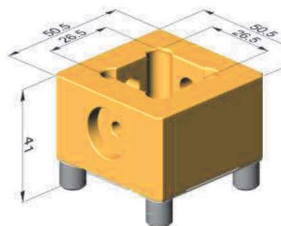
Certal*® is a registered trademark of Constellium Valais SA

PSE Uni Panel, Uni Holder, Square Holder and/or Uni Blank brass all the electrode holders are incl. chip carrier

	Uni panel incl. chip carrier brass compatible with ITS®* clamping system of Erowa AG 2 x Bores Ø 6,5 mm, distance 40 mm for M6 screws incl. 2 screws M6 x 20 mm				
	Order No.	Dimension	Material	Packing unit	
	PSE 001.200M	50,5 x 50,5 x 41 mm	brass	12 pieces	

	Uni blank incl. chip carrier brass compatible with ITS®* clamping system of Erowa AG				
	Order No.	Dimension	Material	Packing unit	
	PSE 008.100M	50,5 x 50,5 x 41 mm	brass	12 pieces	

Square holder BRASS

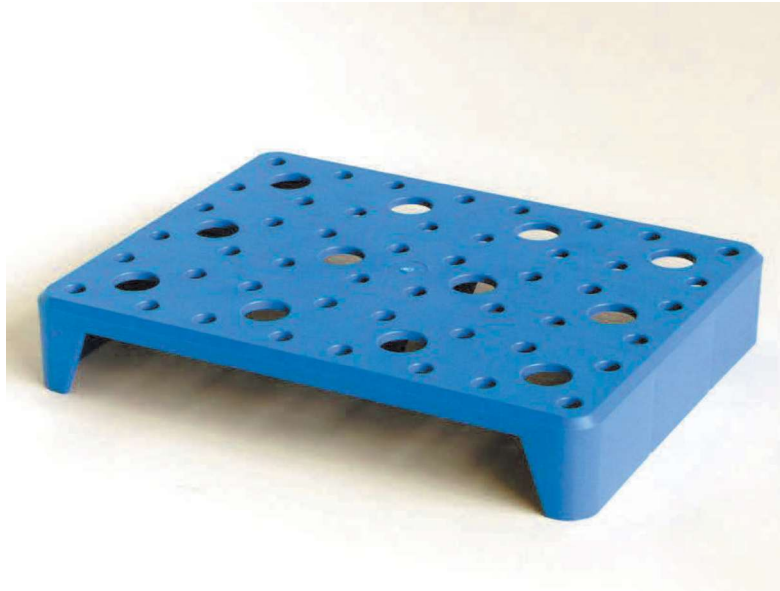
	Square holder 15 brass incl. chip carrier compatible with ITS®* clamping system of Erowa AG square 15 x 15 x 20 mm, stop face in the center, square 16,5 mm milled out				
	Order No.	Dimension	Material	Packing unit	
	PSE 002.100M	50,5 x 50,5 x 41 mm	brass	12 pieces	
	Square holder 20 incl. chip carrier compatible with ITS®* clamping system of Erowa AG square 20 x 20 x 20 mm, stop face in the center, square 21,5 mm milled out				
	Order No.	Dimension	Material	Packing unit	
	PSE 003.100M	50,5 x 50,5 x 41 mm	brass	12 pieces	
	Square holder 25 incl. chip carrier compatible with ITS®* clamping system of Erowa AG square 25 x 25 x 20 mm, square 26,5 mm milled out				
	Order No.	Dimension	Material	Packing unit	
	PSE 004.100M	50,5 x 50,5 x 41 mm	brass	12 pieces	

	Square holder 30 incl. chip carrier compatible with ITS®* clamping system of Erowa AG square 30 x 30 x 20 mm, stop face in the center, square 31,5 mm milled out				
	Order No.	Dimension	Material	Packing unit	
	PSE 005.100M	50,5 x 50,5 x 41 mm	brass	12 pieces	

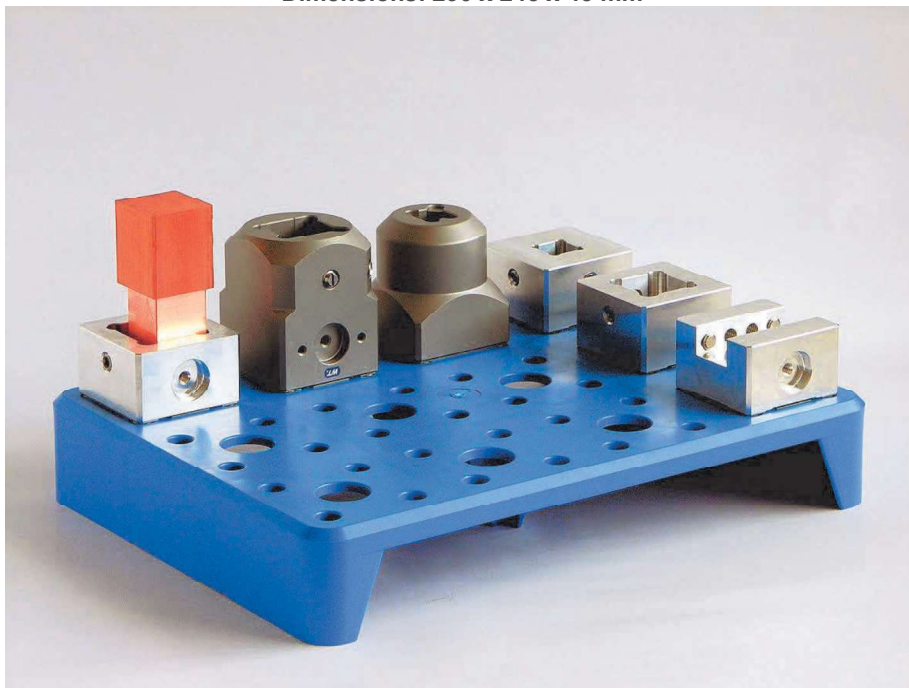
Uni Holder BRASS

	Uni holder 10 incl. chip carrier compatible with ITS®* clamping system of Erowa AG slot 10,5 x 12,5 mm				
	Order No.	Dimension	Material	Packing unit	
	PSE 006.100M	50,5 x 50,5 x 41 mm	brass	12 pieces	
	Uni holder 20 incl. chip carrier compatible with ITS®* clamping system of Erowa AG slot 20,5 x 12,5 mm				
	Order No.	Dimension	Material	Packing unit	
	PSE 007.100M	50,5 x 50,5 x 41 mm	brass	12 pieces	
	Uni holder 25 incl. chip carrier compatible with ITS®* clamping system of Erowa AG slot 25,5 x 12,5 mm				
	Order No.	Dimension	Material	Packing unit	
	PSE 009.100M	50,5 x 50,5 x 41 mm	brass	12 pieces	

PSE 50 Electrode Stand for 12 Electrode Holders



Dimensions: 290 x 245 x 45 mm



Electrode stand for 12 pieces of Electrode holders , compatible with ITS®* clamping system of Erowa AG

Dimensions: 290 x 245 x 45 mm

Order No.: PSE-12fold

Transponder Chip Holder including Data Medium



Technical Data Chip Holder

Base holder: plastic material, Ø 16,5 mm incl. thread M5
Total height: 18 mm
Thread M5 x 5,5 mm
Chip receiving bore: Ø 12,4 mm

Design: Compatible with all existing systems

Other chip holder colors available upon request

Plastic base holder available also without transponder chip
(price upon request)

Compatible with ITS®* clamping system of the Erowa AG

Order-No.: PSE-D16,5 17,5

Adhesive Transponder Chip Holder



Technical Data Chip Holder

Base holder: plastic material, 48x16 mm
Chip receiving bore: Ø 12,4 mm

Compatible with ITS®* clamping system of the Erowa AG

Order-No.: PSE-48-16-7

Screw Connection Transponder Chip Holder



Technical Data Chip Holder

Base holder: plastic material, 48 x 22 mm
Hole distance: 31 mm for screws M4
Chip receiving bore: Ø 12,4 mm

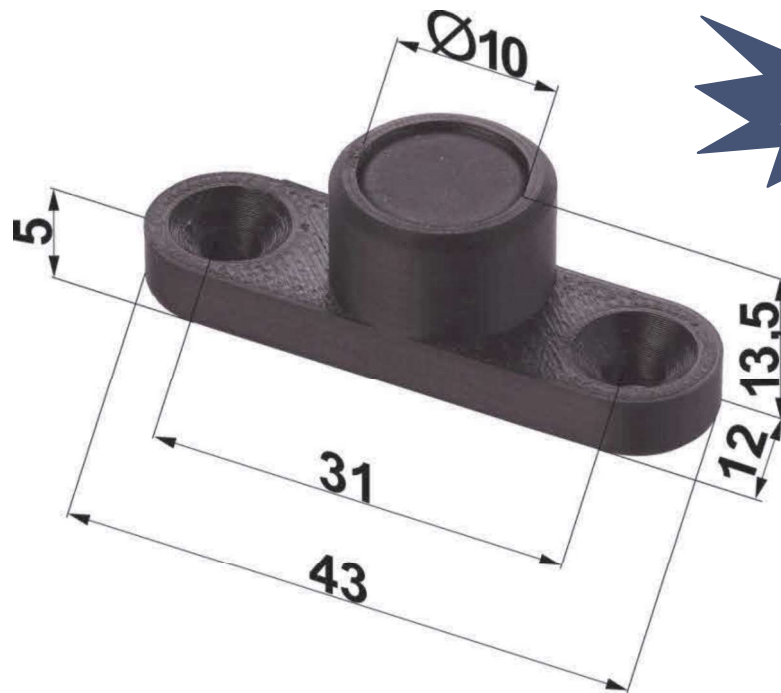
Compatible with ITS®* clamping system of the Erowa AG

Order-No.: PSE-48-22-7

All 3 different receptive types available for immediate delivery!



Screw Connection Transponder Chip Holder including Base



Technical Data Chip Holder

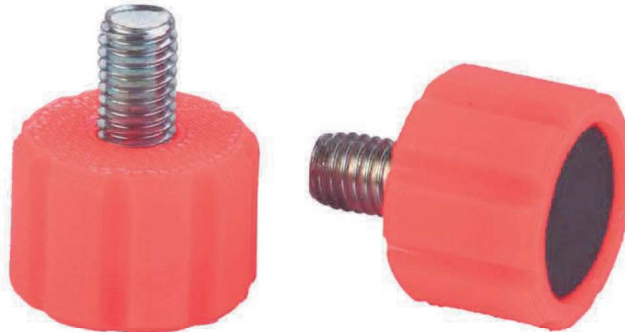
Base holder: plastic material, 43 x 5 mm
Hole distance: 31 mm for screws M4 incl. subsidence
Chip receiving bore: Ø 10 mm

Compatible with ITS®* clamping system of the Erowa AG

Additional chip holder colors available upon request!

Order-No.: PSE-43-5-13,5

Transponder Chip Holder including Data Medium



Technical Data Chip Holder

Base holder: plastic material, Ø 15,5 mm incl. thread M5
Total height: 18,5 mm
Thread M5 x 8 mm

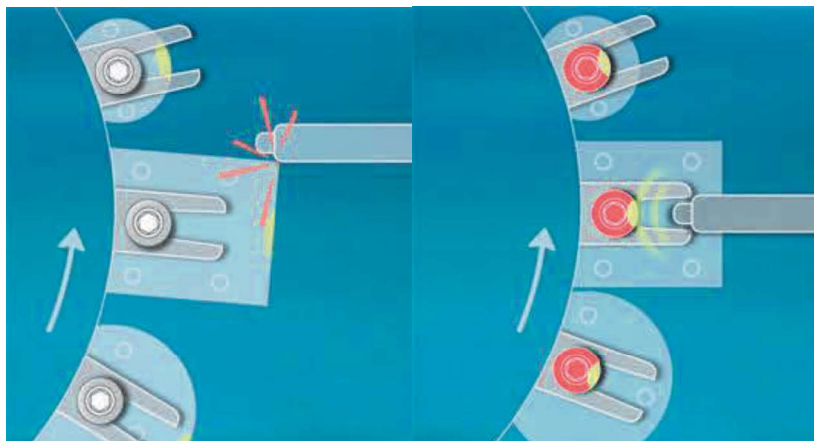
Design: Compatible with all existing systems

Compatible with ITS®* clamping system of the Erowa AG

Additional chip holder colors available upon request!

Order-No.: PSE-48-22-8

Expansion Shaft including RFID-Chip



Up to now the RFID-Chip had to be mounted on the electrode holder. The reading interval of the antenna to the chip however varies secondary to changing holder sizes. In addition large dimensioned holders could damage the reader head.

SOLUTION: The RFID-Chip is mounted slightly elevated on the expansion shaft. The distance between chip and reader head remains optimal and a clash is therefore impossible. Ideal and compatible for current market rotary and rack magazines.



Expansion Shaft including Chip

Expansion Shaft WUC-F/A incl. special screw and integrated RFID Transponder Chip

Dimension: Ø 20 x 45 mm

Material: rustproof, hardened 50 HRC

Screw head: plastic material, Ø 17,5 mm, Height: 13,5 mm

Compatible with ITS®* clamping system of the Erowa AG

Order-No.: PSE-48-22-9

The advantages are clear!

- Increase in productivity since various electrode holders can be used
- Data secure readability since the antenna is optimal positioned
- No clash risk to electrodes due to deviating dimensions
- No retrofit of the reader antenna thanks to a consistent chip standard
- Compatible with ITS®* clamping systems of the Erowa AG

RFID Transponder Hand-Held Reader



**Transponder Hand-Held Reader incl. spiral cable
extendible to 6 m**

PC connection via USB

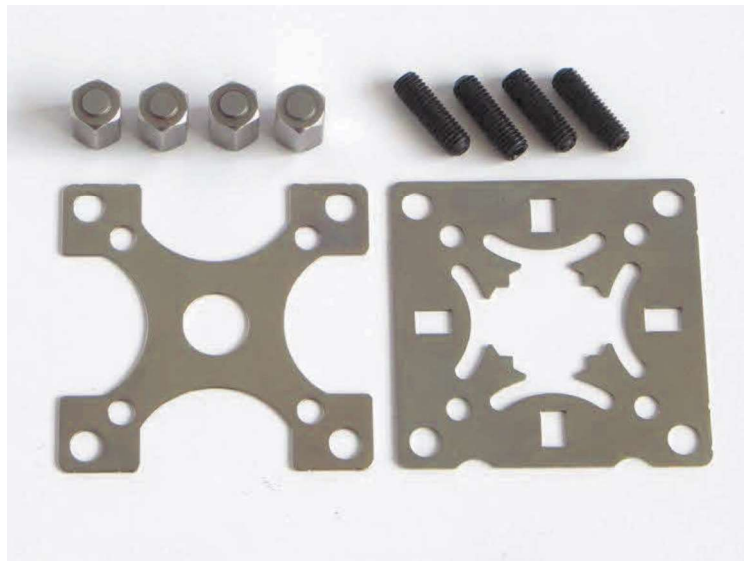
Compatible with ITS®* clamping systems of the Erowa AG

**Transponder Hand-Held Reader incl. spiral cable
exptendible to 2 m**

PC connection via USB

Compatible with ITS®* clamping systems of the Erowa AG

Centering Plate 50x50

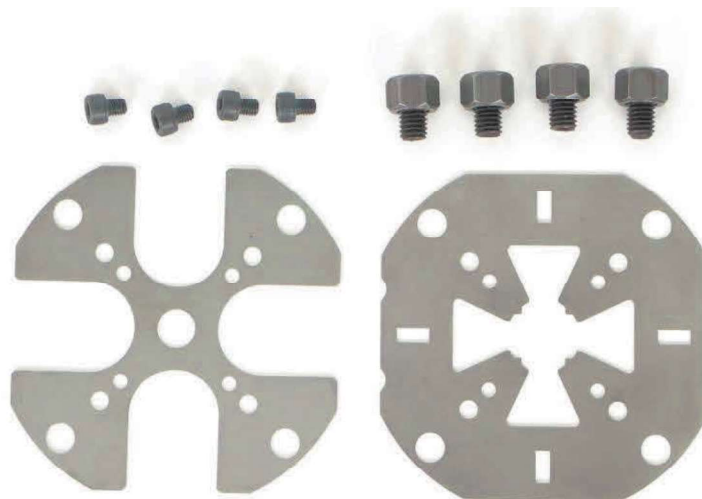


1 piece of centering plate rustproof incl. support feet

Order No.: PSE-Centering Plate 50

compatible with ITS®* clamping system of Erowa AG

Centering Plate 100



1 piece of centering plate rustproof incl. 4 support feet M8 and screws 4 x M5

Order No.: PSE-Centering plate 100

compatible with ITS®* clamping system of Erowa AG

This electrode clamping system is especially suitable for electrode sizes from 15 x 15 to 120 x 80 mm.

The electrode is ready for clamping without much preparation.

The system clamps the profile through 2 inclined clamping jaws of 4 mm jaw height.

Square Clamp Mounting WQS15



WQS15

Square holder for profile 15 x 15 mm

Outer dimensions: 51 x 51 x 45 mm

Reference height Z: 41 mm

Material clamping plate: rustproof, hardened 54 HRC

Material basic holder: brass, compatible with ITS®* clamping system of Erowa AG

Order No.: PSE-WQS15

Square Clamp Mounting WQS25



WQS25

Square holder for profile 25 x 25 mm

Outer dimensions: 51 x 51 x 45 mm

Reference height Z: 41 mm

Material clamping plate: rustproof, hardened 54 HRC

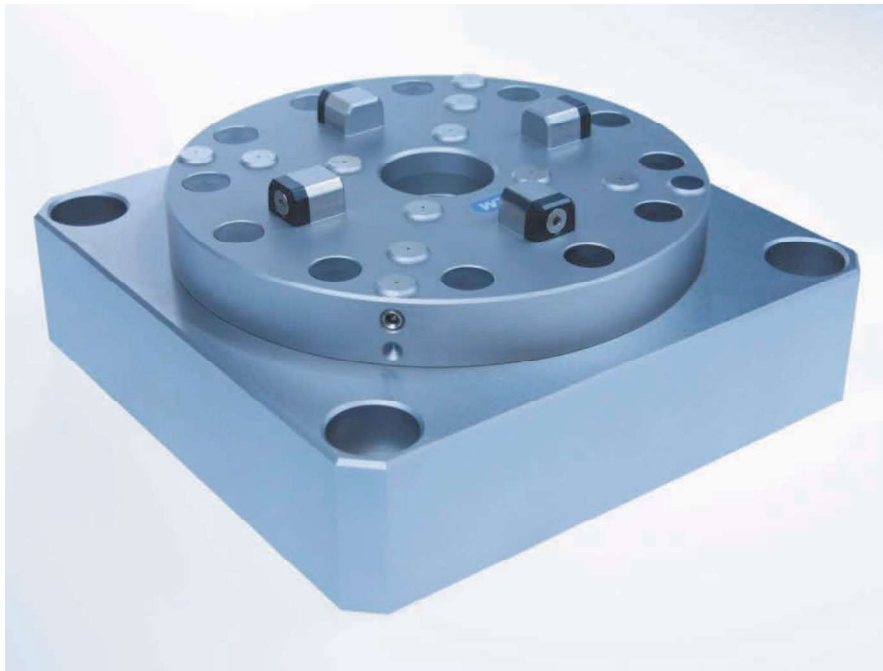
Material basic holder: brass, compatible with ITS®* clamping system of Erowa AG

Order No.: PSE-WQS25

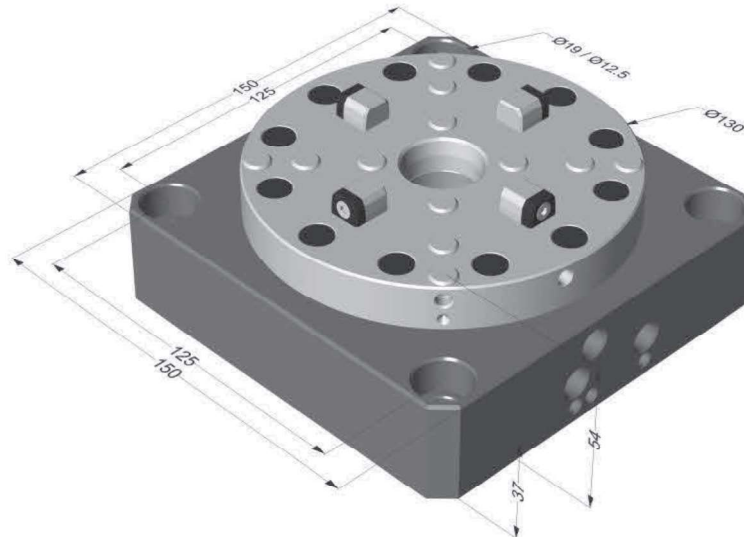
Palletizing System MPS 130 Modular

Zero point clamping chuck P130 for milling, sanding, drilling and vertical eroding machines

MPS130 1 incl. Indexing

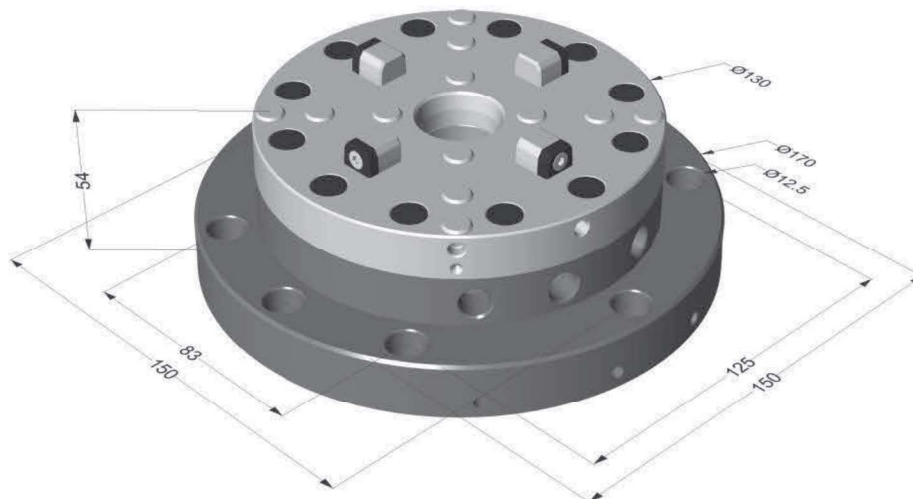


MPS130 1 incl. Indexing



Order No.: PSE-MPS1130

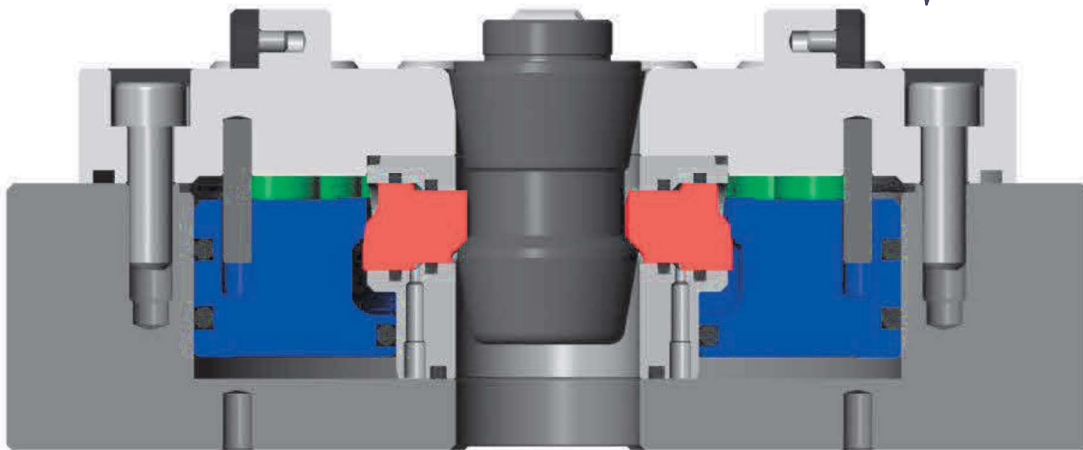
MPS130D150 1 incl. Indexing



Design

Clamping force see Technical Data
Basic systems for pallets INOX Ø 130 x 30 mm, Ø 148 x 30 mm and/or ALU pallet 198 x 198 x 40 mm
Repetition accuracy $\pm 0,002$ mm
Indexing, pallet position oriented 4 x 90°

Order No.: PSE-MPS1130R



New Clamping Mechanism

The system is completely sealed to avoid penetration of shavings or emulsions.

A seal is not necessary but optionally available.

Our **New construction** has a considerably greater rigidity than existing systems with spheres resulting in no vibrations during processing.

We have also attached protection caps for the XYZ references.

Technical Data MPS130

Repetition accuracy: 0,002 mm

Indexing: 4 x 90°

Clamping force without pressure amplification: 12.000 N

Clamping force of turbo function including opening/re-tightening and cleaning: 16.000 N (6 bar)

Clamping force of turbo function including opening/re-tightening and cleaning: 22.000 N (8 Bar)

Machine table mountable with screws M12, distance 125 mm

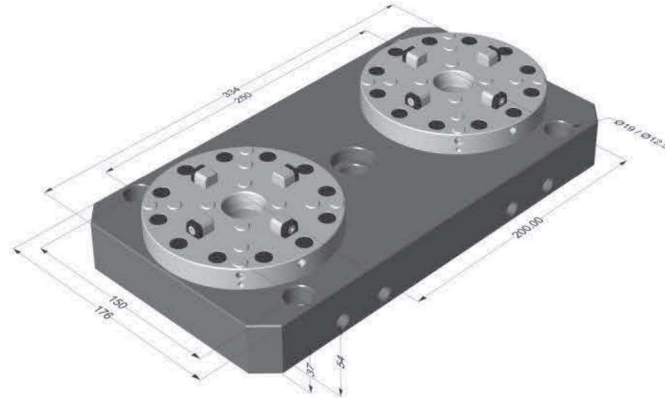
Dimensions: 150 x 150 x 52 mm

Material: rustproof, hardened at 60 HRC

Operated by control unit or compressed air gun

The system is controllable from the base plate for use on 5-axis machining centers.

MPS130 2er incl. Indexing



Design

Clamping force see Technical Data

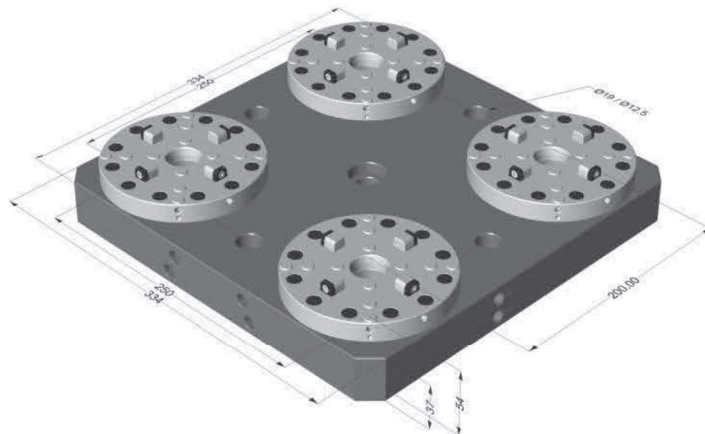
Basic systems for pallets rustproof \varnothing 130 x 30 mm, \varnothing 148 x 30 mm
and/or ALU pallet 198 x 198 x 40 mm, 398 x 198 x 40 mm

Repetition accuracy: $\pm 0,002$ mm

Indexing, pallet position oriented 4 x 90°

Order No.: PSE-MPS21130

MPS130 4er incl. Indexing



Design

Clamping force see Technical Data

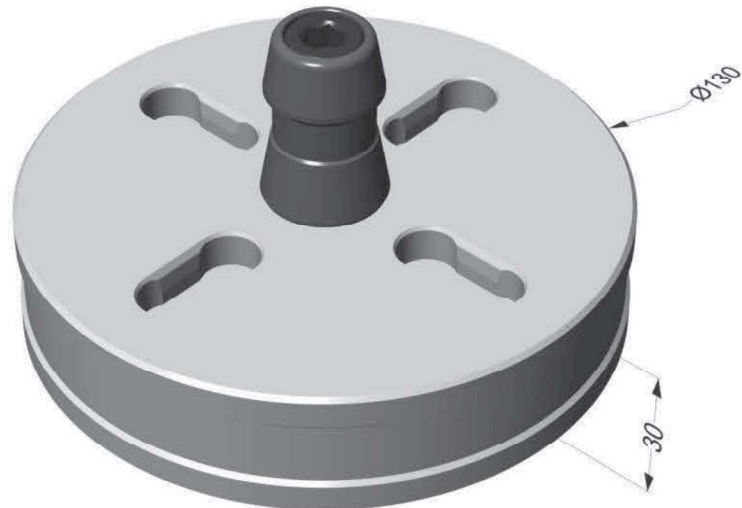
Basic systems for pallets rustproof \varnothing 130 x 30 mm, \varnothing 148 x 30 mm
and/or ALU pallet 198 x 198 x 40 mm, 398 x 198 x 40 mm und 398 x 398 x 40 mm

Repetition accuracy: $\pm 0,002$ mm

Indexing, pallet position oriented 4 x 90°

Order No.: PSE-MPS41130

Pallet rustproof Ø 130 x 30 mm



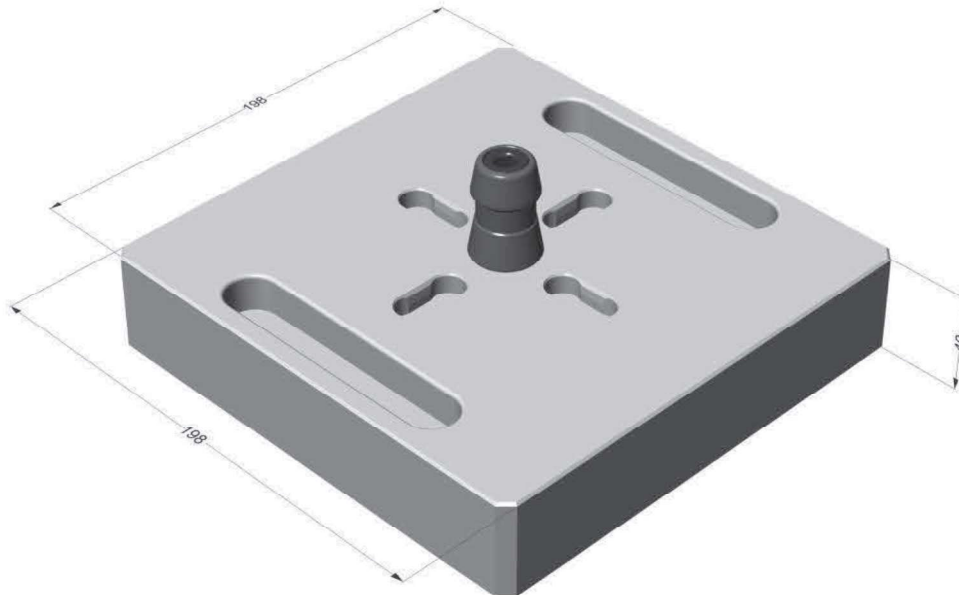
Order No.: PSE-P130-30 rustproof

Pallet rustproof Ø 148 x 30 mm



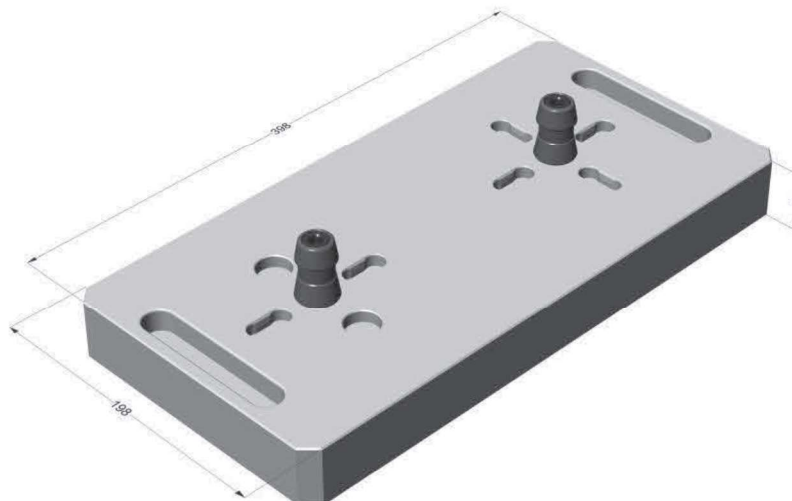
Order No.: PSE-P148-30 rustproof

Pallet ALU 198 x 198 x 40 mm



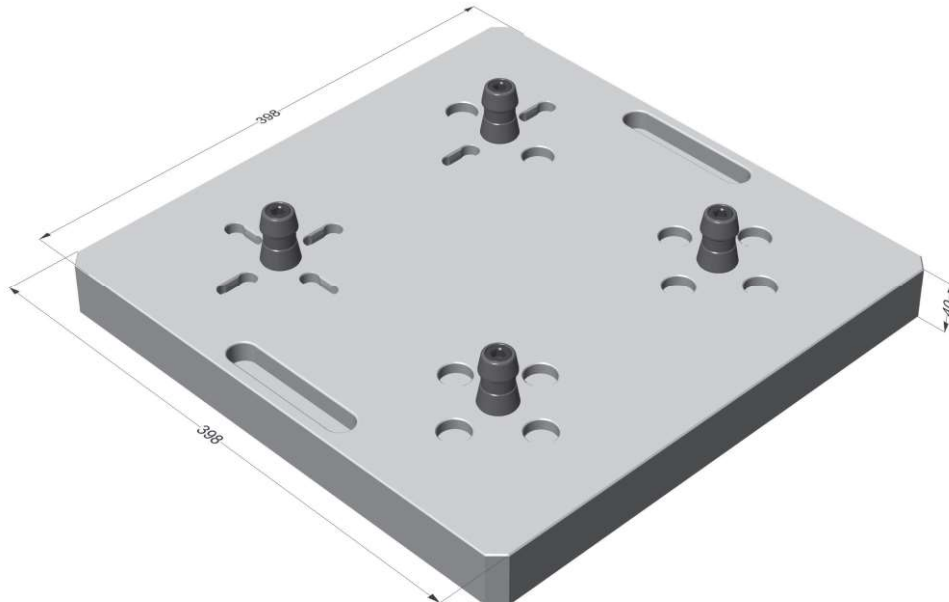
Order No.: PSE-P198-40 ALU

Pallet ALU 198 x 398 x 40 mm



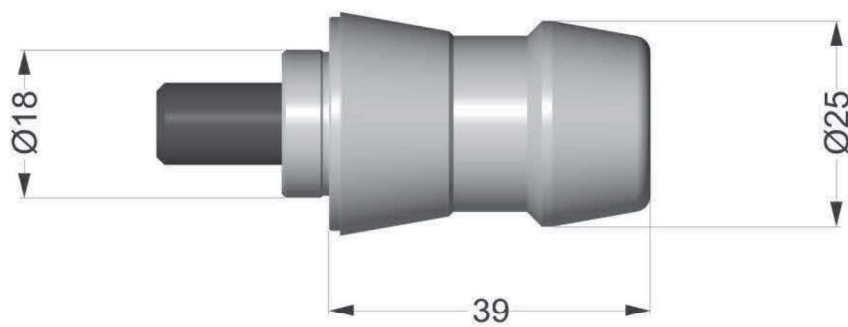
Order No.: PSE-P198-398-40 ALU

Pallet ALU 398 x 398 x 40 mm



Order No.: PSE-P398-398-40 ALU

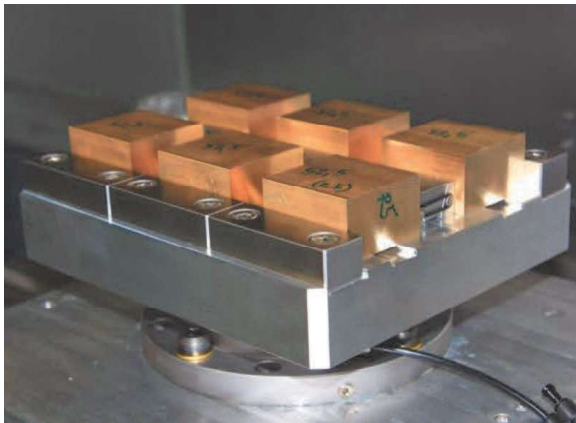
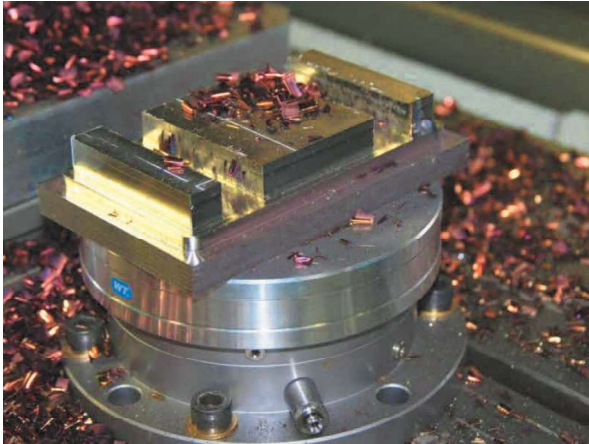
Clamping spigot MPS



Order No.: PSE-S130



Examples of Use



MPS2130 1 D150 on a lathe



P2130 2 on a milling machine



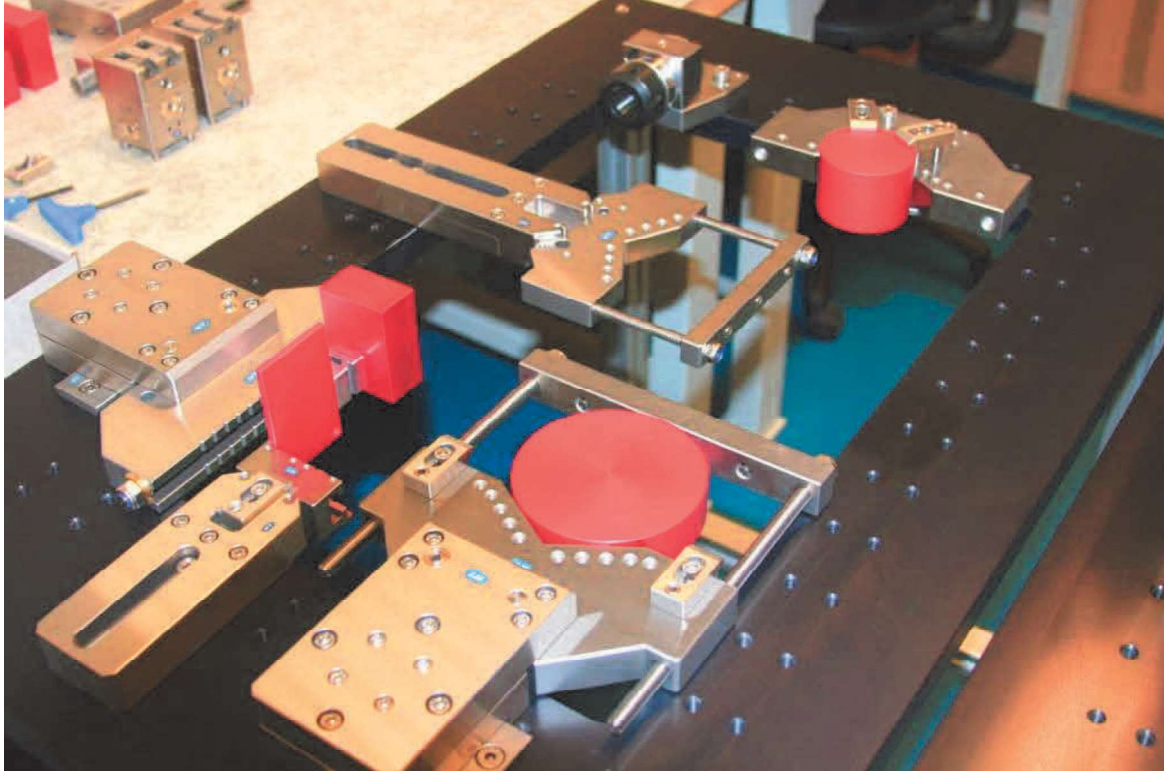
Control unit RCV 5000 GV6 for clamping and releasing the pallets



Design

Pneumatic control unit for all pallet chucks
All pallet chucks are individually controllable

PSE WEDM CLAMPING SYSTEM for wire eroding machine



DEMO table with examples of use from practice

- ◆ Every component is hardened and rustproof
- ◆ Maximum tolerance at 100 mm 0,001 mm
- ◆ Sets for other types of wire eroding machines on request
- ◆ Special solutions possible

The right equipment for the right area of application with sophisticated combinations of basic rulers and 3D tip holders allows clamping of any possible workpiece.

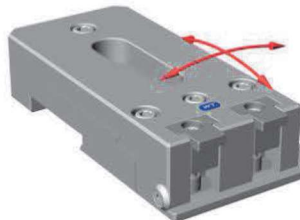
Precision Tip Holder For fine machining on wire erosion

Tip holder with guided clamping jaws WZJ130R

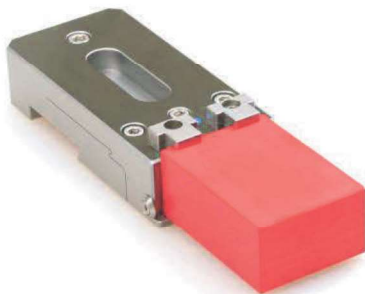


Tip holder for adjustable workpiece setting in 2 axes
Mounting for WL75 or WL125 reference ruler
Dimension: 130 x 60 x 30 mm

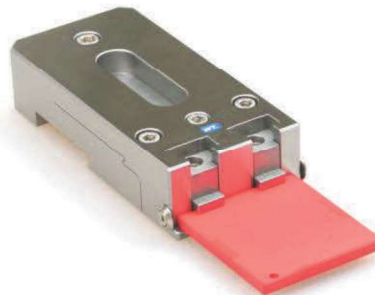
Order No.: PSE-WZJ130R



Adjustable in XZ/YZ $\pm 0,4^\circ$



Workpiece height max. 40 mm



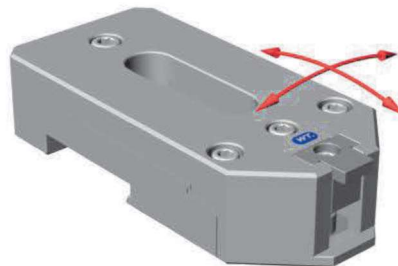
Workpiece height min. 0,25 mm

Tip holder with guided clamping jaw WZJ130VR

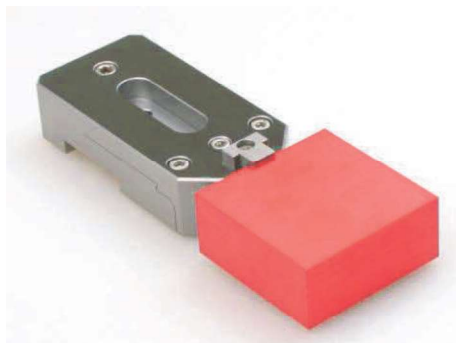


Tip holder for adjustable workpiece setting in 2 axes
Mounting for WL75 or WL125 reference ruler
Dimension: 130 x 60 x 30 mm

Order No.: PSE-WZJ130VR



Adjustable in XZ/YZ $\pm 0,4^\circ$



Workpiece height max. 40 mm



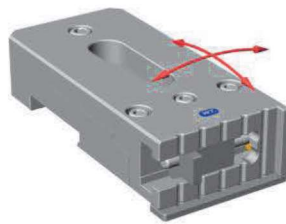
Workpiece height min. 0,25 mm

Tip holder with guided clamping jaws WZJ130HR



Tip holder for adjustable workpiece setting in 2 axes
Mounting for WL75 or WL125 reference ruler
Dimension: 130 x 60 x 30 mm

Order No.: PSE-WZJ130HR



Adjustable in XZ/YZ $\pm 0,4^\circ$



Workpiece length max. 100 mm



Workpiece length min. 0,25 mm

Clamping jaws for tip holder WZJ130HR



Clamping jaws of 0 – 33 mm
Order No.: PSE-WS/WRS 0-33

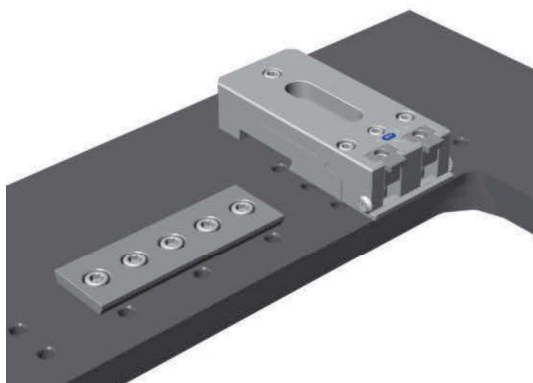


Clamping jaws of 33 – 66 mm
Order No.: PSE-WS/WRS 33-66



Clamping jaws of 66 – 100 mm
Order No.: PSE-WS/WRS 66-100

CLAMPING SYSTEM WEDM Reference Rulers



WL75-M8

Reference element of series 200xJ-X
Dimensions: L = 75 mm, mounting holes for M8 screws

Hole spacing 25 mm appropriate for all wire eroding machines

Order No.: PSE-WL75-M8



WL150-M8

Order No.: PSE-WL150-M8

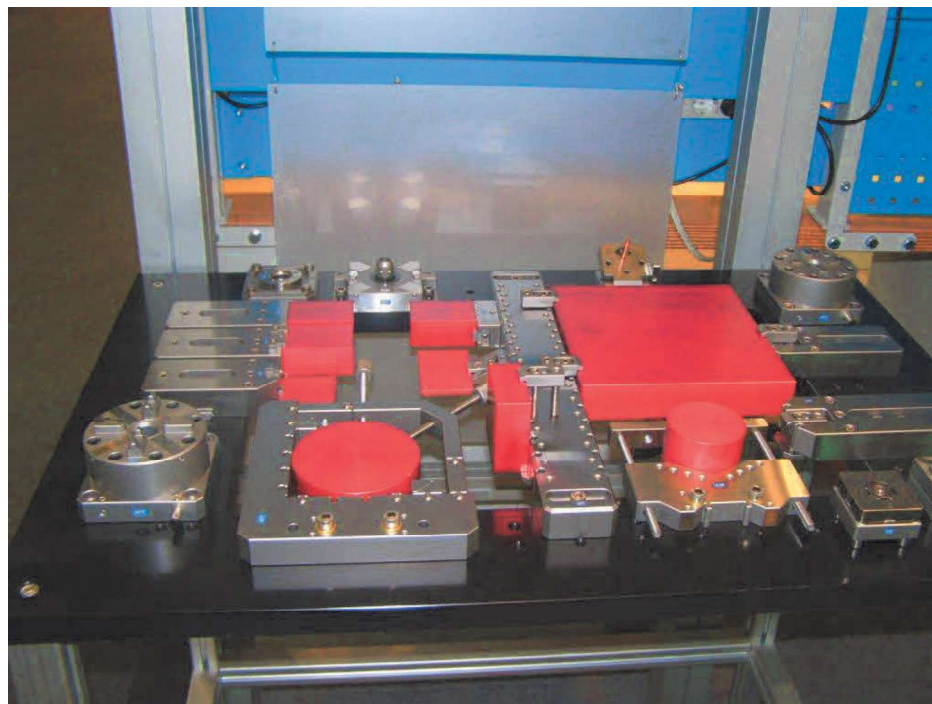
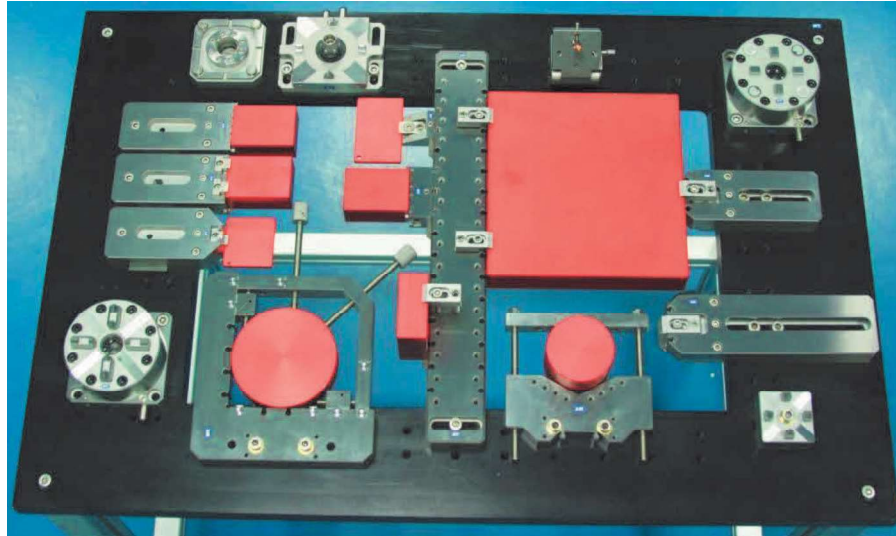
Reference element of series 200.xJ-X
Dimensions: L = 125 mm, mounting holes for M8 screws

Hole spacing 25 mm appropriate for all wire eroding machines

Order No.: PSE-WL150-M8



DEMO table with examples of use from practice



PSE Pneumatic Flat Chuck WPC80S

For mounting on Z-zero basis

Workpiece loading max. workpiece weight 30 kg with Z-support, 15 kg without Z-support.

Lateral connections for opening and re-tightening

Flat chuck also available with Z-support cleaning, compatible with ITS®* clamping system of Erowa AG

Order No.: PSE-WPC80SC



Dimensions: 120 x 90 x 44 mm



PSE Pneumatic Horizontal Chuck 50

for flat chuck WPC56H100 FSF

Workpiece loading max. workpiece weight 30 kg with Z-support, 15 kg without Z-support.

Lateral connections for opening and re-tightening

Flat chuck also available with Z-support cleaning, compatible with ITS®* clamping system of Erowa AG

Dimensions: 120 x 90 x 44 mm

Order No.: PSE-WPC56HC- 100 FSF

REFERENCE RULERS

Our WIRE-EDM range includes two types of reference rulers.

All reference rulers are ground within a tolerance of $\pm 0,001$ mm (100 mm length).

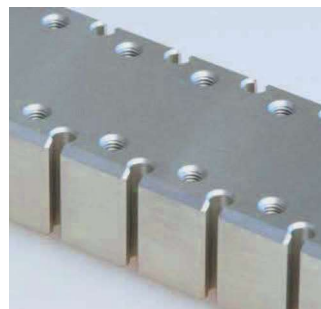
Z-supports are available as accessories for the reference rulers.

Dimensions 40 x 23.5 x 5 mm with hole spacing 25 mm for M6 screws

The length of the reference rulers and the distance of mounting grooves for M8 screws are made according to machine type. 2x spacers 60 x 35 x 5 mm are available as accessories in order to reach a Z-O spacing.



Standard - D

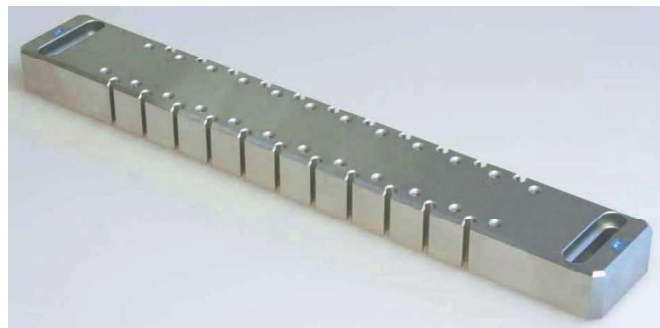


LOGIC - L

System **LOGIC** for further extension of clamping possibilities through quick clamping elements



Reference ruler Type D



Reference ruler Type L

VERTICALLY ADJUSTABLE Tip Holders WZ

Tip holder for easy setting of the workpiece plane
Construction allows longitudinal and vertical setting of the plane
Range of vertical setting: $\pm 0,25$ mm, adjustable



WZ150L

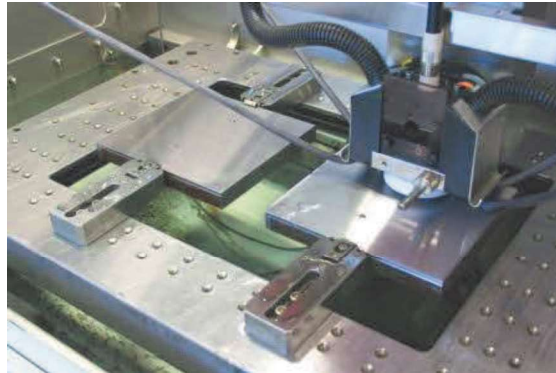
Tip holder with system **LOGIC**
System **LOGIC** for further extension of clamping possibilities
Dimensions: 150 x 60 x 30 mm, groove for M8 screw
Maximum workpiece weight: 50 kg
Order No.: PSE-WZ150L



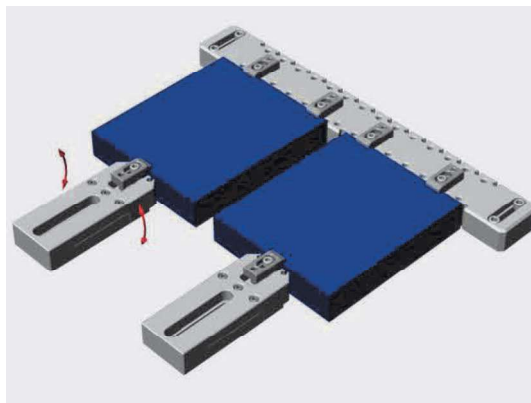
WZ220L

Tip holder with system **LOGIC**
System **LOGIC** for further extension of clamping possibilities
Dimensions: 220 x 66 x 30 mm, groove for M8 screw
Maximum workpiece weight: 60 kg
Order No.: PSE-WZ220L

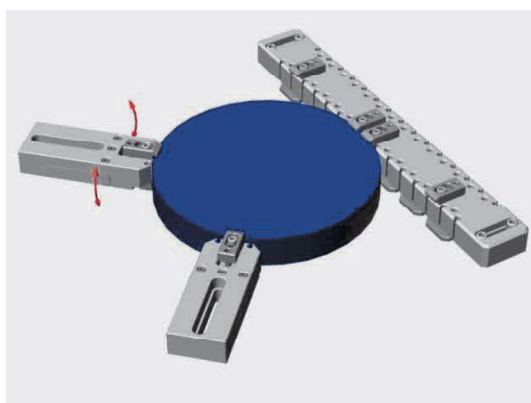
Examples of workpiece fixations



Workpiece fixation with 4 pieces of tip holders WZ150L

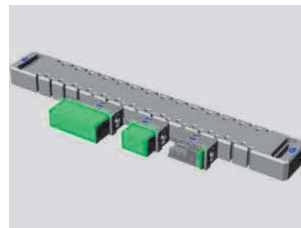
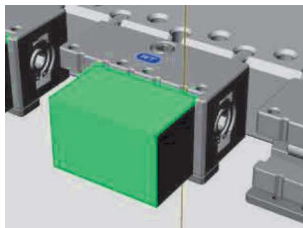
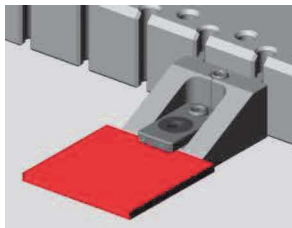


Workpiece fixation with 2 pieces of tip holders WZ150L and reference ruler



Round workpiece fixation
with 2 pieces of tip holders WZ150L and reference ruler

ACCESSORIES FOR REFERENCE RULERS



WSD25L

Low-profile clamp for thin workpieces
Mounting on reference ruler Type L
Dimensions: 35 x 40 x 20 mm

Order No.: PSE-WSD25L



WS60L

Vice for small workpieces
Clamping range: 0 - 100 mm
Mounting on reference ruler Type L
Dimensions: 60 x 35 x 30 mm

Order No.: PSE-WS60L

ACCESSORIES FOR TIP HOLDERS WZ



WSD34LZ

Low-profile clamp for thin workpieces
Mounting on basic ruler WZ150L or WZ220L
Dimensions: 42 x 40 x 20 mm

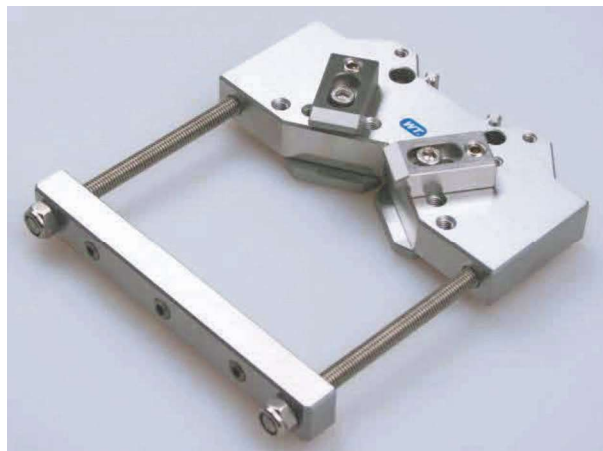
Order No.: PSE-WSD34LZ



WS60LZ

Vice for small workpieces
Clamping range: 0 - 100mm
Mounting on basic ruler WZ150L or WZ220L
Dimensions: 60 x 35 x 30 mm

Order No.: PSE-WS60LZ



WNP120L

Prism for round or rectangular workpieces
Clamping range: \varnothing 10 - 120 mm, \square 120 x 120 mm
Mounting on basic rulers WZ150L, WZ220L
Dimensions: 86 x 150 x 19 mm

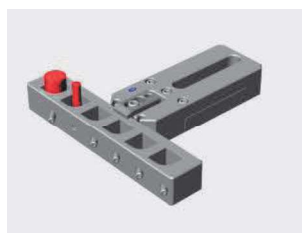
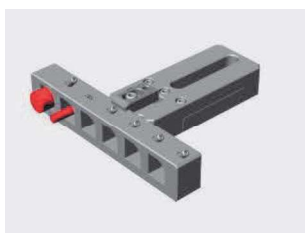
Order No.: PSE-WNP120L



WPR200

Prism for round workpieces
Clamping range: \varnothing 3 - 20 mm
Mounting on tip holder WZ150L, WZ220L
Dimensions: 200 x 36 x 28 mm

Order No.: PSE-WPR200



CLAMPING SYSTEM WEDM



WL75-M8

Reference element of series 200xJ-X
Dimensions: L = 75 mm
Mounting holes for M8 screws
Order No.: PSE-WL75-M8



WL150-M8

Reference element of series 200.xJ-X
Dimensions: L = 150 mm
Mounting holes for M8 screws
Order No.: PSE-WL150-M8

ACCESSORIES FOR CLAMPING SYSTEM WEDM

Pendulum heads enable quick alignment in three axes
Workpiece can be preset on a stone plate outside the machine



WND10

3D pendulum head
Adjustable in three axes $\pm 1^\circ$
Maximum workpiece weight: 10 kg
Dimensions: 130 x 85 x 39 mm

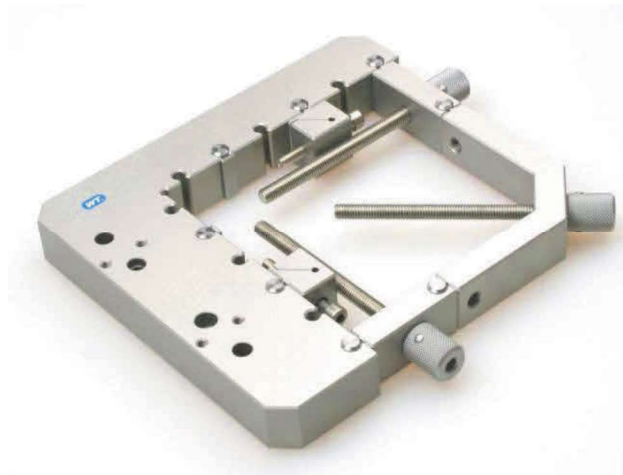
Order No.: PSE-WND10



WND15HP

3D Pendulum head
Adjustable in three axes $\pm 1^\circ$
Maximum workpiece weight: 15 kg
Dimensions: 140 x 90 x 48 mm

Order No.: PSE-WND15HP



FRAME SET WST120 for WND15HP

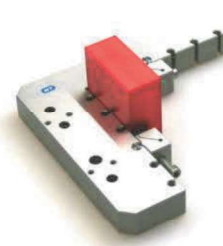
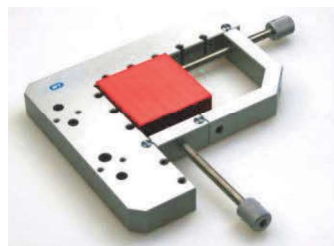
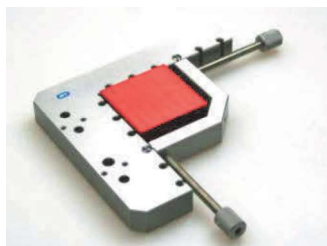
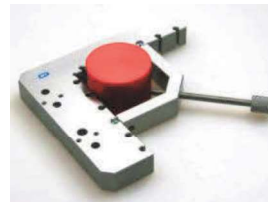
Basic set for round or rectangular workpieces
Clamping range of \varnothing 120 mm or 120 x 120 mm

Mounting on WND15HP

Dimensions: 205 x 185 x 25 mm

Order No.: PSE-WST120

Workpiece clamping





WS150 HP

SUPER VICE for larger workpieces

Clamping range: 0 - 150 mm

Maximum workpiece weight: 15 kg

Mounting on WND15HP

Dimensions: 205 x 100 x 25 mm

Order No.: PSE-WS150 HP



WNP175

Prism for round or rectangular workpieces

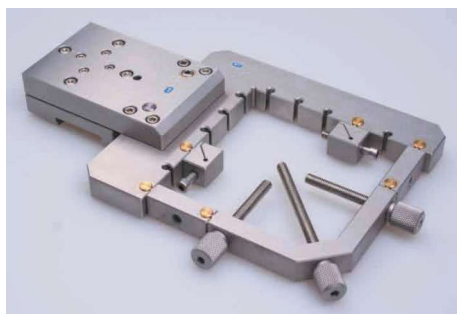
Clamping range: Ø 10 - 175 mm, □ 175 x 175 mm

Maximum workpiece weight: 15 kg

Mounting on WND15HP

Dimensions: 205 x 128 x 25 mm

Order No.: PSE-WNP175



WND10 SET

Basic set for small workpieces of round or rectangular profile

Maximum workpiece dimension: Ø 120 mm, □ 120 x 120 mm

Maximum workpiece weight: 10 kg

Order No.: PSE-WND10 SET



WNDP15HP SET

Set for workpieces of round or rectangular profile
Maximum workpiece dimension: \varnothing 10 - 175 mm, \square 175 x 175 mm
Maximum workpiece weight: 15 kg

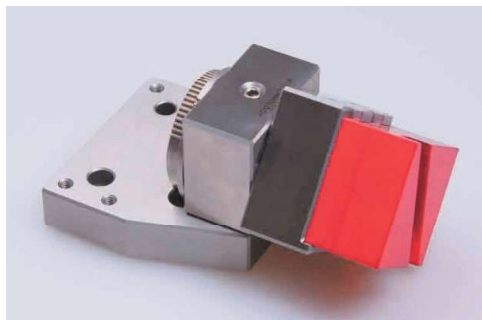
Order No.: PSE-WNDP15HP SET



WDP56 SET

Swivel vice for workpieces of round or rectangular profile
Clamping range: \varnothing 2 - 20 mm, vice 1 - 100 mm
Mounting on WND 10 and WND15HP
or directly on the machine table
Angle adjustment by means of a cutting disk by 1° each,
or a sine ruler

Order No.: PSE-WDP56 SET



WDP56

Swivel vice
Clamping range: 0 - 100 mm

Order No.: PSE-WDP56



WDP56-ER32

Swivel vice incl. collet chuck ER32
Clamping range: Ø 2 - 20 mm

Order No.: PSE-WDP56-ER32



WRS56

Pendulum swivel vice adjustable in three axes including angle adjustment
Clamping range: 0 to 100 mm, angle adjustment: 360°, compatible with ITS®* clamping system of Erowa AG
Dimensions: 56 x 56 x 94 mm

Order No.: PSE-WRS56

Basic Element for WRS56



WRS56-1
Basic element

Order No.: PSE-WRS56-1



WRS56-2

Clamping part with 2 clamping jaws

Order No.: PSE-WRS56-2



WRS56-3

Accessories for tip holder (set of 4 pieces)

Order No.: PSE-WRS56-3



WRS56-11/13

Accessories for swivel head

Order No.: PSE-WRS56-11/13



Clamping jaws of 0 - 33mm
Order No.: PSE-WS/WRS 0-33



Clamping jaws of 33 - 66mm
Order No.: PSE-WS/WRS 33-66



Clamping jaws of 66 - 100mm
Order No.: PSE-WS/WRS 66-100



WRS56V

Pendulum swivel Vice, adjustable in three axes with angle adjustment
Clamping range: 0 to 100 mm, angle adjustment: 360°, compatible with ITS®* clamping system of Erowa AG
Dimensions: 56 x 56 x 94 mm
Order No.: PSE-WRS56V

Basic element for WRS56V



Basic element

Order No.: PSE-WRS56V-1



Clamping part with 2 clamping jaws

Order No.: PSE-WRS56V-2



Accessories for tip holder (set of 4 pieces)

Order No.: PSE-WRS56V-3



Accessories for swivel head

Order No.: WRS56V-11/13

BASIC SETS FOR WIRE ERODING MACHINES

Consisting of reference ruler and 2 tip holders WZ150L-SET



WL330D SET

Basic set Robofil 240
Dimensions: groove for M8 screws, distance: 290 mm
Total length: 330 mm
Maximum workpiece weight: 200 kg
compatible with Robofil

Order No.: PSE-WL330D SET



WL330L SET

Basic set for Robofil 240
System **LOGIC** for further extension of clamping possibilities
Dimensions: groove for M8 screws, distance: 290 mm
Total length: 330 mm
Maximum workpiece weight: 200 kg
compatible with Robofil

Order No.: PSE-WL330L SET



WL454D SET

Basic set for Robofil 390
Dimensions: groove for M8 screws, distance: 414 mm
Total length: 454 mm
Maximum workpiece weight: 200 kg
compatible with Robofil

Order No.: PSE-WL454D SET



WL454L SET

Basic set for Robofil 390
System **LOGIC** for further extension of clamping possibilities
Dimensions: groove for M8 screws, distance: 414 mm
Total length: 454 mm
Maximum workpiece weight: 200 kg
compatible with Robofil

Order No.: PSE-WL454L SET



WL460D SET

Basic set for Robofil 440
Dimensions: groove for M8 screws, distance: 420 mm
Total length: 460 mm
Maximum workpiece weight: 200 kg
compatible with Robofil

Order No.: PSE-WL460D SET



WL460L SET

Basic set for Robofil 440

System **LOGIC** for further extension of clamping possibilities

Dimensions: groove for M8 screws, distance: 420 mm

Total length: 460 mm

Maximum workpiece weight: 200 kg
compatible with Robofil

Order No.: PSE-WL460L SET



WL410D SET

Basic set for Agie Series 2 Dimensions: groove for M8 screws, distance: 370 mm

Total length: 410 mm

Maximum workpiece weight: 200 kg
compatible with Agie*

Order No.: PSE-WL410D SET



WL410L SET

Basic set for Agie Series 2

System **LOGIC** for further extension of clamping possibilities

Dimensions: groove for M8 screws, distance: 370 mm

Total length: 410 mm

Maximum workpiece weight: 200 kg
compatible with Agie*

Order No.: PSE-WL410L SET



WL510D SET

Basic set for Agie Series 3
Dimensions: groove for M8 screws, distance: 469 mm
Total length: 509 mm
Maximum workpiece weight: 200 kg
compatible with Agie*

Order No.: PSE-WL510D SET



WL510L SET

Basic set for Agie Series 3
System **LOGIC** for further extension of clamping possibilities
Dimensions: groove for M8 screws, distance: 469 mm
Total length: 509 mm
Maximum workpiece weight: 200 kg
compatible with Agie*

Order No.: PSE-WL510L SET



WL416D SET

Basic set for Fanuc a0i
Dimensions: groove for M8 screws, distance: 376 mm
Total length: 416 mm
Maximum workpiece weight: 200 kg
compatible with Fanuc*

Order No.: PSE-WL416D SET



WL416L SET

Basic set for Fanuc a0i

System **LOGIC** for further extension of clamping possibilities

Dimensions: groove for M8 screws, distance: 376 mm

Total length: 416 mm

Maximum workpiece weight: 200 kg

compatible with Fanuc*

Order No.: PSE-WL416L SET



WL466D SET

Basic set for Fanuc a0i3

Dimensions: groove for M8 screws, distance: 426 mm

Total length: 466 mm

Maximum workpiece weight: 200 kg

compatible with Fanuc*

Order No.: PSE-WL466D SET



WL466L SET

Basic set for Fanuc a0i3

System **LOGIC** for further extension of clamping possibilities

Dimensions: groove for M8 screws, distance: 426 mm

Total length: 466 mm

Maximum workpiece weight: 200 kg

compatible with Fanuc*

Order No.: PSE-WL466L SET



WL490D SET

Basic set for Fanuc a1i
Dimensions: groove for M8 screws, distance: 450 mm
Total length: 490 mm
Maximum workpiece weight: 200 kg
compatible with Fanuc*

Order No.: PSE-WL490D SET



WL490L SET

Basic set for Fanuc a1i
System **LOGIC** for further extension of clamping possibilities
Dimensions: groove for M8 screws, distance: 450 mm
Total length: 490 mm
Maximum workpiece weight: 200 kg
compatible with Fanuc*

Order No.: PSE-WL490L SET



WL520D SET

Basic set for Fanuc a1iD
Dimensions: groove for M8 screws, distance: 480 mm
Total length: 520 mm
Maximum workpiece weight: 200 kg
compatible with Fanuc*

Order No.: PSE-WL520D SET



WL520L SET

Basic set for Fanuc a1iD
System **LOGIC** for further extension of clamping possibilities
Dimensions: groove for M8 screws, distance: 480 mm
Total length: 520 mm
Maximum workpiece weight: 200 kg
compatible with Fanuc*

Order No.: PSE-WL520L SET



WL450L SET

Basic set for Fanuc 400iA
System **LOGIC** for further extension of clamping possibilities
Dimensions: groove for M8 screws, distance: 426 mm
Total length: 450 mm
Maximum workpiece weight: 200 kg
compatible with Fanuc*

Order No.: PSE-WL450L SET



WL450D SET

Basic set for Fanuc 400iA
Dimensions: groove for M8 screws, distance: 426 mm
Total length: 450 mm
Maximum workpiece weight: 200 kg
compatible with Fanuc*

Order No.: PSE-WL450D SET



WL504L SET

Basic set for Fanuc 600iA
System **LOGIC** for further extension of clamping possibilities
Dimensions: groove for M8 screws, distance: 480 mm
Total length: 504 mm
Maximum workpiece weight: 200 kg
compatible with Fanuc*

Order No.: PSE-WL504L SET



WL504D SET

Basic set for Fanuc 600iA
Dimensions: groove for M8 screws, distance: 480 mm
Total length: 504 mm
Maximum workpiece weight: 200 kg
compatible with Fanuc*

Order No.: PSE-WL504D SET



WL470D SET

Basic set for Mitsubishi FA20
Dimensions: groove for M8 screws, distance: 430 mm
Total length: 470 mm
Maximum workpiece weight: 200 kg
compatible with Mitsubishi*

Order No.: PSE-WL470D SET



WL470L SET

Basic set for Mitsubishi FA20
System **LOGIC** for further extension of clamping possibilities
Dimensions: groove for M8 screws, distance: 430 mm
Total length: 470 mm
Maximum workpiece weight: 200 kg
compatible with Mitsubishi*

Order No.: PSE-WL470L SET



WL710D SET

Basic set for Sodick Premium
Dimensions: groove for M8 screws, distance: 670 mm
Total length: 710 mm
Maximum workpiece weight: 200 kg
compatible with Sodick*

Order No.: PSE-WL710D SET



WL710L SET

Basic set for Sodick Premium
System **LOGIC** for further extension of clamping possibilities
Dimensions: groove for M8 screws, distance: 670 mm
Total length: 710 mm
Maximum workpiece weight: 200 kg
compatible with Sodick*

Order No.: PSE-WL710L SET



WL510D SET

Basic set for Sodick AQ327L
Dimensions: groove for M8 screws, distance: 510 mm
Total length: 470 mm
Maximum workpiece weight: 200 kg
compatible with Sodick*

Order No.: PSE-WL510D SET



WL510L SET

Basic set for Sodick AQ327L
System **LOGIC** for further extension of clamping possibilities
Dimensions: groove for M8 screws, distance: 510 mm
Total length: 470 mm
Maximum workpiece weight: 200 kg
compatible with Sodick*

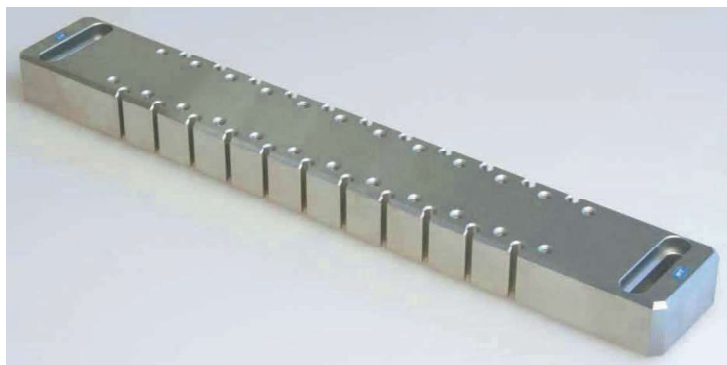
Order No.: PSE-WL510L SET

Basic sets for other machines on request

Basic Ruler for Wire Eroding Machines

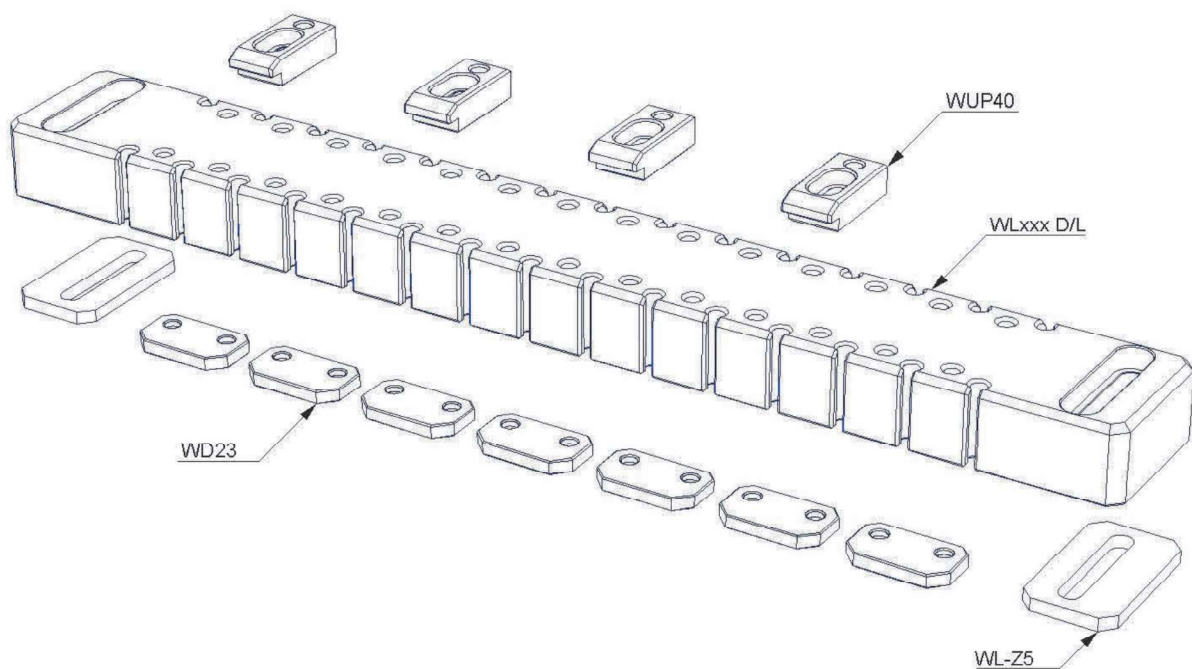


Reference ruler Type D

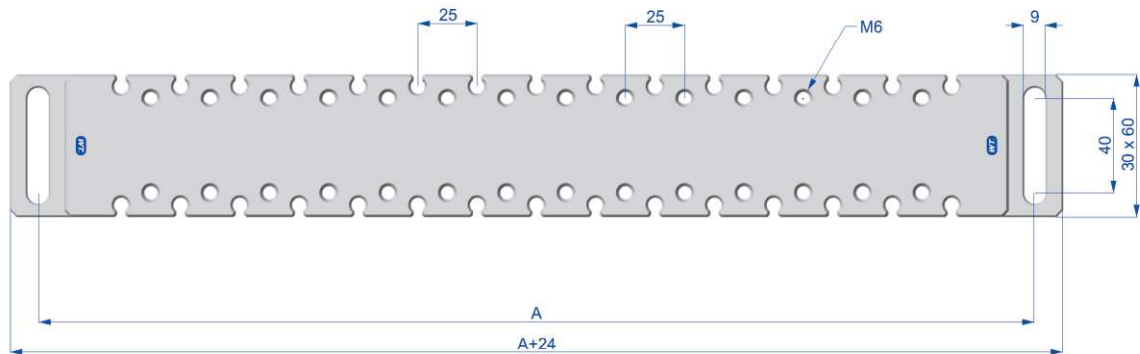


Reference ruler Type L

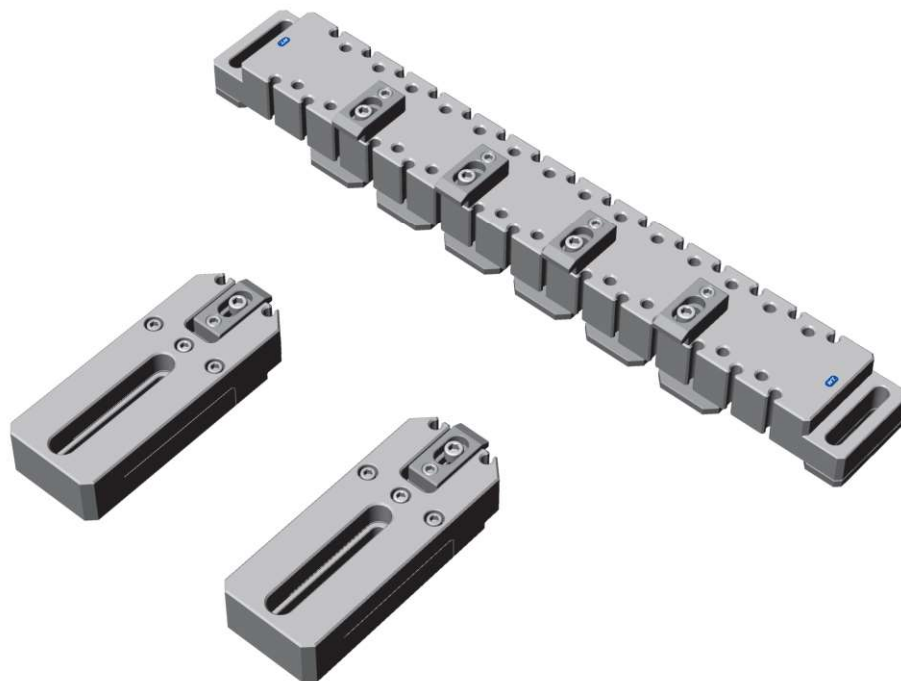
Accessories Basic Rulers



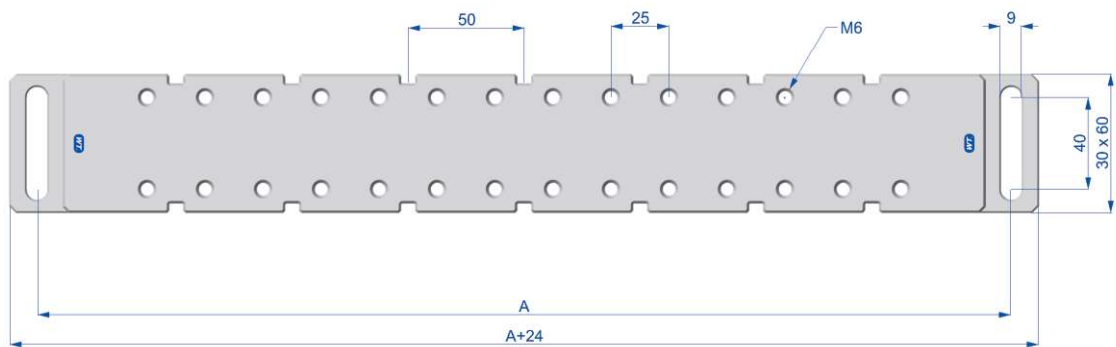
Basic Ruler LOGIC



Basic Set LOGIC



Basic Ruler Standard



Basic Set Standard



Basic rulers for Robofil 240 compatible **WL330**

Dimensions: groove for M8 screws, distance: 290 mm, total length: 330 mm



Type D
Order No.: PSE-WL330D



Type L
Order No.: PSE-WL330L

Basic rulers for Robofil 390 compatible **WL454**

Dimensions: groove for M8 screws, distance: 414 mm, total length: 454 mm



Type D
Order No.: PSE-WL454D



Type L
Order No.: PSE-WL454L

Basic rulers for Robofil 440 compatible **WL460**

Dimensions: groove for M8 screws, distance: 420 mm, Total length: 460 mm



Type D
Order No.: PSE-WL460D



Type L
Order No.: PSE-WL460L

Basic rulers for Robofil 440 compatible **WL440**

Dimensions: groove for M8 screws, distance: 400 mm, Total length: 440 mm



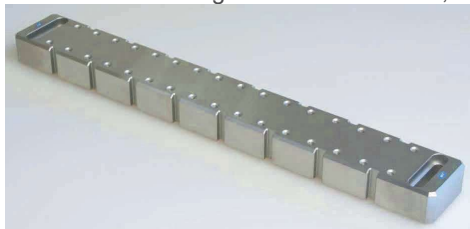
Type D
Order No.: PSE-WL440D



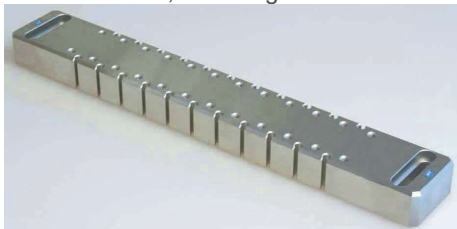
Type L
Order No.: PSE-WL440L

Basic rulers for Agie* 2 compatible **WL410**

Dimensions: groove for M8 screws, distance: 370 mm, total length: 410 mm



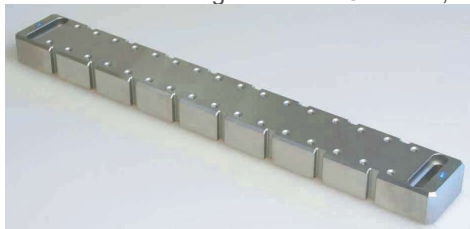
Type D
Order No.: **PSE-WL410D**



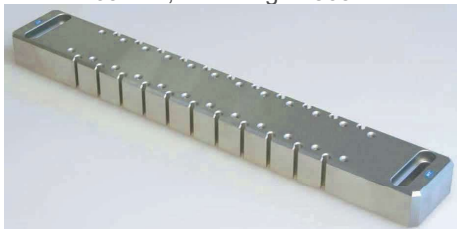
Type L
Order No.: **PSE-WL410L**

Basic rulers for Agie* 3 compatible **WL510**

Dimensions: groove for M8 screws, distance: 469 mm, total length: 509 mm



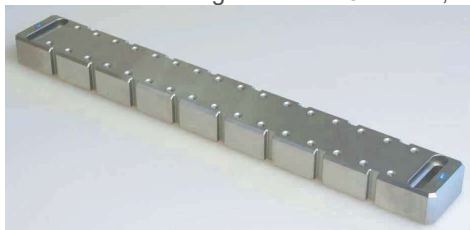
Type D
Order No.: **PSE-WL510D**



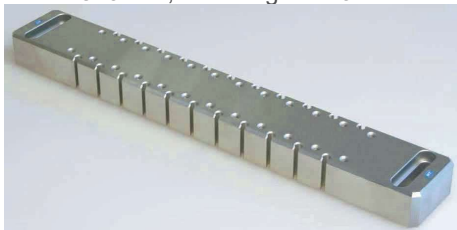
Type L
Order No.: **PSE-WL510L**

Basic rulers for Fanuc* a0i compatible **WL416**

Dimensions: groove for M8 screws, distance: 376 mm, total length: 416 mm



Type D
Order No.: **PSE-WL416D**



Type L
Order No.: **PSE-WL416L**

Basic rulers for Fanuc*a0i 3 compatible **WL466**

Dimensions: groove for M8 screws, distance: 426 mm, total length: 466 mm



Type D
Order No.: **PSE-WL466D**



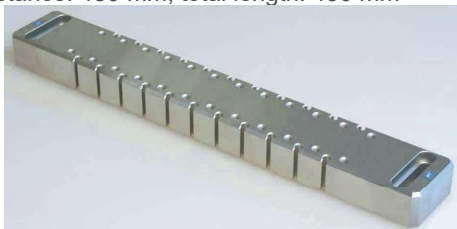
Type L
Order No.: **PSE-WL466L**

Basic rulers for Fanuc* a1i compatible **WL490**

Dimensions: groove for M8 screws, distance: 450 mm, total length: 490 mm



Type D
Order No.: PSE-WL490D



Type L
Order No.: PSE-WL490L

Basic rulers for Fanuc* a1iD compatible **WL520**

Dimensions: groove for M8 screws, distance: 480 mm, total length: 520 mm



Type D
Order No.: PSE-WL520D



Type L
Order No.: PSE-WL520L

Basic rulers for Fanuc* C400iA compatible **WL450**

Dimensions: groove for M8 screws, distance: 426 mm, total length: 450 mm



Type D
Order No.: PSE-WL450D



Type L
Order No.: PSE-WL450L

Basic rulers for Fanuc* C600iA compatible **WL504**

Dimensions: groove for M8 screws, distance: 480 mm, total length: 504 mm



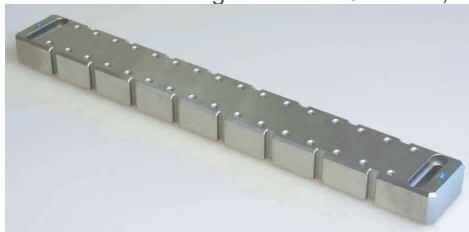
Type D
Order No.: PSE-WL504D



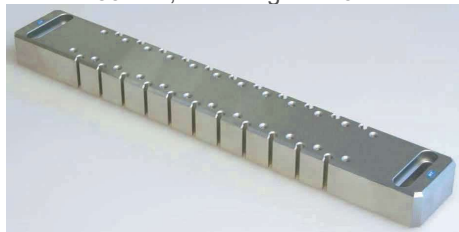
Type L
Order No.: PSE-WL504L

Basic rulers for Mitsubishi* FA20 compatible **WL470**

Dimensions: groove for M8 screws, distance: 430 mm, total length: 470 mm



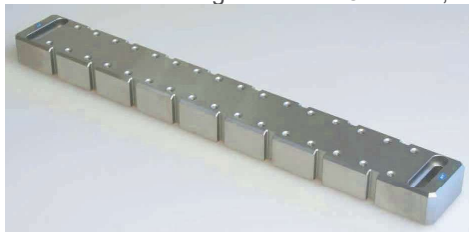
Type D
Order No.: PSE-WL470D



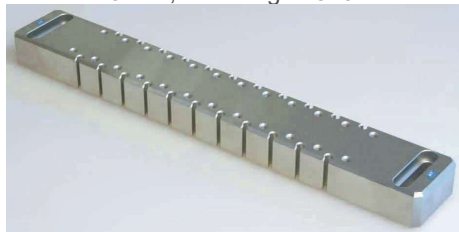
Type L
Order No.: PSE-WL470L

Basic rulers for Sodick* AQ327L compatible **WL510**

Dimensions: groove for M8 screws, distance: 470 mm, total length: 510 mm



Type D
Order No.: PSE-WL510D



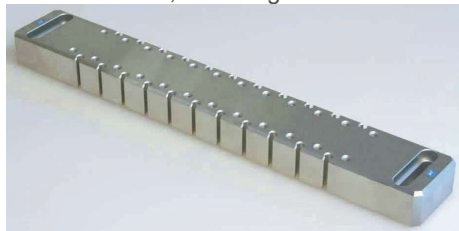
Type L
Order No.: PSE-WL510L

Basic rulers for Sodick* Premium compatible **WL710**

Dimensions: groove for M8 screws, distance: 670 mm, total length: 710 mm

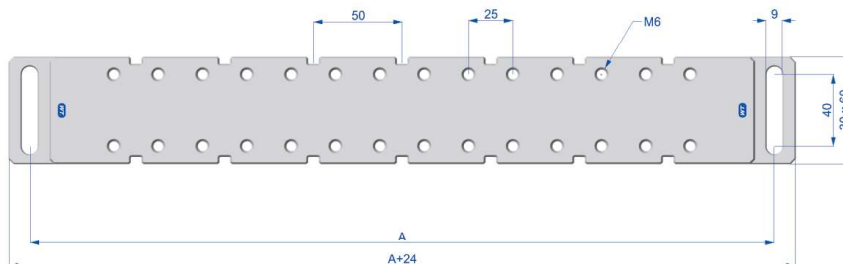


Type D
Order No.: PSE-WL710D



Type L
Order No.: PSE-WL710L

Reference rulers for other machines on request, acc. to your data, always indicate **Dimension A** please.





Clamping Accessories Set WIRE EDM rustproof

6 pieces	Screws M6 x 12 rustproof
6 pieces	Screws M6 x 20 rustproof
6 pieces	Screws M6 x 30 rustproof
6 pieces	Screws M6 x 40 rustproof
6 pieces	Screws M6 x 50 rustproof
6 pieces	Screws M6 x 60 rustproof
6 pieces	Screws M6 x 70 rustproof
6 pieces	Screws M6 x 80 rustproof
6 pieces	Screws M6 x 90 rustproof
6 pieces	Screws M6 x 100 rustproof

6 pieces	Hexagon spacing screws M8 x 12 rustproof
6 pieces	Hexagon spacing screws M8 x 20 rustproof
6 pieces	Hexagon spacing screws M8 x 30 rustproof
6 pieces	Hexagon spacing screws M8 x 40 rustproof
12 pieces	Hexagon spacers M6 x 30 rustproof
12 pieces	Hexagon spacers M8 x 30 rustproof
15 pieces	Holding magnets Ø 12,5 mm
2 pieces	Plastic boxes 190 x 280 x 50 mm

Order No.: PSE-WSS200 SET for Wire EDM



PSE GmbH
Markstrasse 1
D-64832 Babenhausen

web: pse-wtec.de
email: info@pse-wtec.de

General Terms and Conditions

Prices are valid as of 01.01.017 (subject to change without notice)

- excluding transport and packaging
- excluding VAT or other applicable taxes
- excluding insurance fees
- excluding mounting

Terms of payment: within 10 days incl. 2 % cash discount or 30 days net from date of invoice

Goods remain the property of PSE GmbH until complete payment has been received.

Complaints can only be accepted if they are submitted in writing within 10 days upon receipt of goods. Later complaints shall not be considered.

Please send your inquiries and orders to:

PSE GmbH
Mr. Alfons Stübing
Markstrasse 1
D-64832 Babenhausen-Langstadt
Tel: +49 (0) 6073 742252
Mobil: +49 (0) 171 3219644
Fax: +49 (0) 6073 742253
E-Mail: pse-a.stuebing@t-online.de
Webpage: www.pse-wtec.de

(*)

UPC®, EWIS®, ITS®, EROWA® are trademark-protected names by the Erowa AG.

HIRSCHMANN®, SODICK®, FANUC®, MITSUBISHI® are trademark-protected names.

Macro® and System 3R® and 3R® and Mecatool® are trademark-protected names by System 3R International AB and its affiliated companies.

AGIE® is a trademark-protected name by Agie Charmilles SA.

CHARMILLES® is a trademark-protected name by Agie Charmilles New Technologies SA

Certal® is a trademark-protected name.