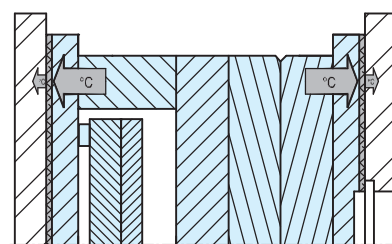
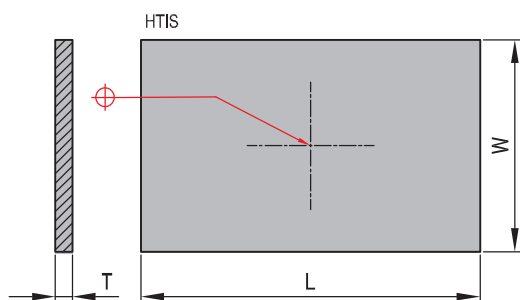




HTIS

Insulating plates-asbestos-free

For the insulation of presses and injection molds for thermoplastics and thermoset materials and diecasting dies.
Other sizes available upon request



REF	W	L	T
HTIS-1616-6	152	152	6
HTIS-1620-6	152	192	6
HTIS-1625-6	152	242	6
HTIS-2020-6	192	192	6
HTIS-2025-6	192	242	6
HTIS-2030-6	192	292	6
HTIS-2035-6	192	342	6
HTIS-2040-6	192	392	6
HTIS-2225-6	214	242	6
HTIS-2525-6	242	242	6
HTIS-2530-6	242	292	6
HTIS-2535-6	242	342	6
HTIS-2540-6	242	392	6
HTIS-2550-6	242	492	6
HTIS-3030-6	292	292	6
HTIS-3035-6	292	342	6
HTIS-3040-6	292	392	6

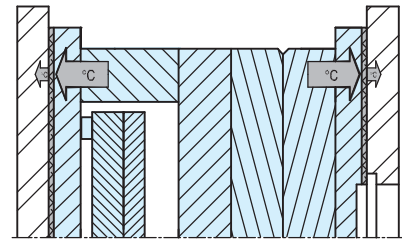
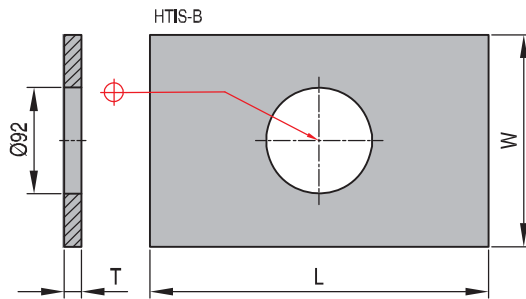
REF	W	L	T
HTIS-3045-6	292	442	6
HTIS-3050-6	292	492	6
HTIS-3055-6	292	542	6
HTIS-3060-6	292	592	6
HTIS-3535-6	342	342	6
HTIS-3540-6	342	392	6
HTIS-3545-6	342	442	6
HTIS-3550-6	342	492	6
HTIS-3560-6	342	592	6
HTIS-4040-10	342	392	10
HTIS-4045-10	342	442	10
HTIS-4050-10	392	492	10
HTIS-4060-10	392	592	10
HTIS-4545-10	442	442	10
HTIS-4550-10	442	492	10
HTIS-4560-10	442	592	10
HTIS-4570-10	442	692	10

REF	W	L	T
HTIS-4580-10	442	792	10
HTIS-5050-10	492	492	10
HTIS-5055-10	492	542	10
HTIS-5060-10	492	592	10
HTIS-5070-10	492	692	10
HTIS-5080-10	492	792	10
HTIS-5555-10	542	542	10
HTIS-5060-10	542	592	10
HTIS-5070-10	542	692	10
HTIS-5080-10	542	792	10
HTIS-6060-10	592	592	10
HTIS-6070-10	592	692	10
HTIS-6080-10	592	792	10
HTIS-6090-10	592	892	10
HTIS-1000-2000-06	1000	2000	6
HTIS-1000-2000-10	1000	2000	10

Technical data		Unit
Compressive strength	24°C	341 N/mm ²
	100°C	188 N/mm ²
	200°C	126 N/mm ²
	260°C	118 N/mm ²
Compressive modulus	24°C	12411 N/mm ²
	218°C	19995 N/mm ²
Max. recommended service temperature		288°C
Thermal conductivity	24°C	2,7 x 10 ⁻³ W/mK
	218°C	3,0 x 10 ⁻³ W/mK
Moisture absorption		0,06%
Specific weight		1,96 g/cm ³
Flame resistance classification in accordance with UL 94		94 V-0


Insulating plates-asbestos-free
HTIS-B


For the insulation of presses and injection molds for thermoplastics and thermoset materials and diecasting dies.
Other sizes available upon request



REF	W	L	T
HTIS-B-1616-6	152,00	152	6
HTIS-B-1620-6	152,00	192	6
HTIS-B-1625-6	152,00	242	6
HTIS-B-2020-6	192,00	192	6
HTIS-B-2025-6	192,00	242	6
HTIS-B-2030-6	192,00	292	6
HTIS-B-2035-6	192,00	342	6
HTIS-B-2040-6	192,00	392	6
HTIS-B-2225-6	218,00	242	6
HTIS-B-2525-6	242,00	242	6
HTIS-B-2530-6	242,00	292	6
HTIS-B-2535-6	242,00	342	6
HTIS-B-2540-6	242,00	392	6
HTIS-B-2550-6	242,00	492	6
HTIS-B-3030-6	292,00	292	6
HTIS-B-3035-6	292,00	342	6

REF	W	L	T
HTIS-B-3040-6	292,00	392	6
HTIS-B-3045-6	292,00	442	6
HTIS-B-3050-6	292,00	492	6
HTIS-B-3055-6	292,00	542	6
HTIS-B-3060-6	292,00	592	6
HTIS-B-3535-6	342,00	342	6
HTIS-B-3540-6	342,00	392	6
HTIS-B-3545-6	342,00	442	6
HTIS-B-3550-6	342,00	492	6
HTIS-B-3560-6	342,00	592	6
HTIS-B-4040-10	392,00	392	10
HTIS-B-4045-10	392,00	442	10
HTIS-B-4050-10	392,00	492	10
HTIS-B-4060-10	392,00	592	10
HTIS-B-4545-10	442,00	442	10
HTIS-B-4550-10	442,00	492	10

REF	W	L	T
HTIS-B-4560-10	442,00	592	10
HTIS-B-4570-10	442,00	692	10
HTIS-B-4580-10	442,00	792	10
HTIS-B-5050-10	492,00	492	10
HTIS-B-5055-10	492,00	542	10
HTIS-B-5060-10	492,00	596	10
HTIS-B-5070-10	492,00	692	10
HTIS-B-5080-10	492,00	792	10
HTIS-B-5555-10	542,00	542	10
HTIS-B-5560-10	542,00	592	10
HTIS-B-5570-10	542,00	692	10
HTIS-B-5580-10	542,00	792	10
HTIS-B-6060-10	592,00	592	10
HTIS-B-6070-10	592,00	692	10
HTIS-B-6080-10	592,00	792	10
HTIS-B-6090-10	592,00	892	10

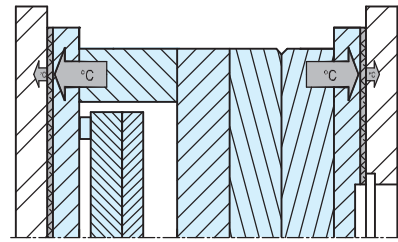
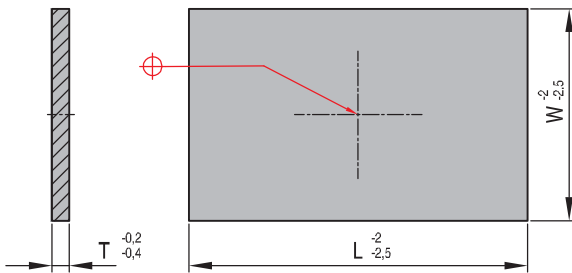
Technical data		Unit
Compressive strength	24° C	341 N/mm ²
	100° C	188 N/mm ²
	200° C	126 N/mm ²
	260° C	118 N/mm ²
Compressive modules	24° C	12411 N/mm ²
	218° C	19995 N/mm ²
Max. recommended service temperature		288° C
Thermal conductivity	24° C	2,7 x 10 ⁻³ W/mK
	218° C	3,0 x 10 ⁻³ W/mK
Moisture absorption		0,06 %
Specific weight		1,96 g/cm ³
Flame resistance classification in accordance with UL 94		94 V-0



R 42

Insulating plates

T = 230°C
 $\lambda = 0,21 \text{ W/mK}$
 P = 600 N/mm²



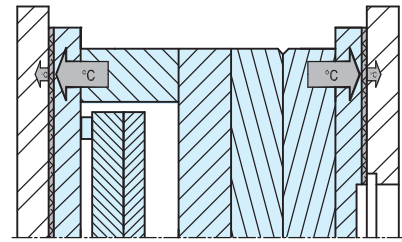
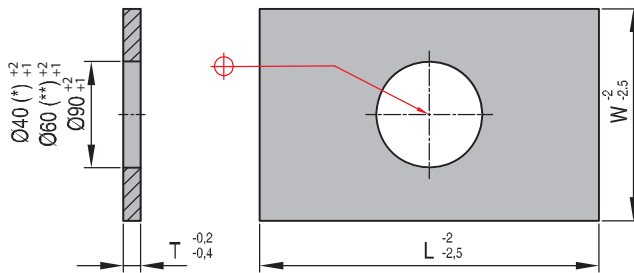
REF	W	L	T
R 42 96x 96-3	96	96	3,0
R 42 96x 96-5	96	96	5,0
R 42 100x130-3	100	130	3,0
R 42 100x130-5	100	130	5,0
R 42 126x126-3	126	126	3,0
R 42 126x126-5	126	126	5,0
R 42 126x156-3	126	156	3,0
R 42 126x156-5	126	156	5,0
R 42 156x156-3	156	156	3,0
R 42 156x156-5	156	156	5,0
R 42 156x196-3	156	196	3,0
R 42 156x196-5	156	196	5,0
R 42 156x246-3	156	246	3,0
R 42 156x246-5	156	246	5,0
R 42 156x296-5	156	296	5,0
R 42 156x396-5	156	396	5,0
R 42 190x246-3	190	246	3,0
R 42 190x246-5	190	246	5,0
R 42 190x296-5	190	296	5,0
R 42 196x196-3	196	196	3,0
R 42 196x196-5	196	196	5,0
R 42 196x246-3	196	246	3,0
R 42 196x246-5	196	246	5,0
R 42 196x296-5	196	296	5,0
R 42 196x296-7	196	296	7,0
R 42 196x346-5	196	346	5,0
R 42 196x346-7	196	346	7,0
R 42 196x396-7	196	396	7,0
R 42 196x446-7	196	446	7,0
R 42 206x156-3	206	156	3,0
R 42 206x156-5	206	156	5,0
R 42 206x196-3	206	196	3,0
R 42 206x196-5	206	196	5,0
R 42 218x246-5	218	246	5,0
R 42 218x296-5	218	296	5,0
R 42 218x396-7	218	396	7,0
R 42 246x246-5	246	246	5,0
R 42 246x246-7	246	246	7,0
R 42 246x276-5	246	276	5,0
R 42 246x296-5	246	296	5,0
R 42 246x296-7	246	296	7,0

REF	W	L	T
R 42 246x346-5	246	346	5,0
R 42 246x346-7	246	346	7,0
R 42 246x396-5	246	396	5,0
R 42 246x396-7	246	396	7,0
R 42 246x446-7	246	446	7,0
R 42 246x496-8,5	246	496	8,5
R 42 254x246-5	254	246	5,0
R 42 254x246-7	254	246	7,0
R 42 296x276-5	296	276	5,0
R 42 296x276-7	296	276	7,0
R 42 296x296-7	296	296	7,0
R 42 296x296-8,5	296	296	8,5
R 42 296x346-7	296	346	7,0
R 42 296x346-8,5	296	346	8,5
R 42 296x396-7	296	396	7,0
R 42 296x396-8,5	296	396	8,5
R 42 296x446-7	296	446	7,0
R 42 296x496-8,5	296	496	8,5
R 42 296x546-8,5	296	546	8,5
R 42 296x596-8,5	296	596	8,5
R 42 296x696-8,5	296	696	8,5
R 42 346x346-7	346	346	7,0
R 42 346x346-8,5	346	346	8,5
R 42 346x396-7	346	396	7,0
R 42 346x396-8,5	346	396	8,5
R 42 346x446-8,5	346	446	8,5
R 42 346x496-7	346	496	7,0
R 42 346x496-8,5	346	496	8,5
R 42 346x546-8,5	346	546	8,5
R 42 346x596-8,5	346	596	8,5
R 42 346x696-8,5	346	696	8,5
R 42 346x796-8,5	346	796	8,5
R 42 396x396-7	396	396	7,0
R 42 396x396-8,5	396	396	8,5
R 42 396x446-7	396	446	7,0
R 42 396x446-8,5	396	446	8,5
R 42 396x496-8,5	396	496	8,5
R 42 396x546-7	396	546	7,0
R 42 396x546-8,5	396	546	8,5
R 42 396x596-8,5	396	596	8,5
R 42 396x696-8,5	396	696	8,5

REF	W	L	T
R 42 396x796-8,5	396	796	8,5
R 42 396x896-8,5	396	896	8,5
R 42 446x446-8,5	446	446	8,5
R 42 446x496-8,5	446	496	8,5
R 42 446x546-8,5	446	546	8,5
R 42 446x696-8,5	446	596	8,5
R 42 446x796-8,5	446	696	8,5
R 42 446x896-8,5	446	796	8,5
R 42 496x496-8,5	496	496	8,5
R 42 496x596-8,5	496	546	8,5
R 42 496x696-8,5	496	596	8,5
R 42 496x896-8,5	496	696	8,5
R 42 496x996-8,5	496	896	8,5
R 42 546x546-8,5	546	546	8,5
R 42 546x596-8,5	546	596	8,5
R 42 546x696-8,5	546	646	8,5
R 42 546x796-8,5	546	696	8,5
R 42 546x896-8,5	546	796	8,5
R 42 546x996-8,5	546	896	8,5
R 42 596x596-8,5	596	596	8,5
R 42 596x696-8,5	596	696	8,5
R 42 596x896-8,5	596	796	8,5
R 42 596x996-8,5	596	896	8,5
R 42 646x596-8,5	596	996	8,5
R 42 646x696-8,5	646	596	8,5
R 42 646x796-8,5	646	696	8,5
R 42 646x896-8,5	646	796	8,5
R 42 646x996-8,5	646	896	8,5
R 42 696x696-8,5	646	996	8,5
R 42 696x696-8,5	696	696	8,5
R 42 696x796-8,5	696	796	8,5
R 42 696x896-8,5	696	896	8,5
R 42 696x996-8,5	696	996	8,5
R 42 796x796-8,5	796	796	8,5
R 42 796x896-8,5	796	896	8,5
R 42 796x996-8,5	796	996	8,5
R 42 896x896-8,5	896	896	8,5
R 42 896x996-8,5	896	996	8,5


Insulating plates
R 43


$T = 230^{\circ}\text{C}$
 $\lambda = 0,21 \text{ W/mK}$
 $P = 600 \text{ N/mm}^2$



REF	W	L	T
R 43 96x96-3(*)	96	96	3,0
R 43 96x96-5(*)	96	96	5,0
R 43 100x130-3(**)	100	130	3,0
R 43 100x130-5(**)	100	130	5,0
R 43 126x126-3	126	126	3,0
R 43 126x126-5	126	126	5,0
R 43 126x156-3	126	156	3,0
R 43 126x156-5	126	156	5,0
R 43 156x156-3	156	156	3,0
R 43 156x156-5	156	156	5,0
R 43 156x196-3	156	196	3,0
R 43 156x196-5	156	196	5,0
R 43 156x246-3	156	246	3,0
R 43 156x246-5	156	246	5,0
R 43 156x296-5	156	296	5,0
R 43 156x396-5	156	396	5,0
R 43 190x246-3	190	246	3,0
R 43 190x246-5	190	246	5,0
R 43 190x296-5	190	296	5,0
R 43 196x196-3	196	196	3,0
R 43 196x196-5	196	196	5,0
R 43 196x246-3	196	246	3,0
R 43 196x246-5	196	246	5,0
R 43 196x296-5	196	296	5,0
R 43 196x296-7	196	296	7,0
R 43 196x346-5	196	346	5,0
R 43 196x346-7	196	346	7,0
R 43 196x396-7	196	396	7,0
R 43 196x446-7	196	446	7,0
R 43 206x156-3	206	156	3,0
R 43 206x156-5	206	156	5,0
R 43 206x196-3	206	196	3,0
R 43 206x196-5	206	196	5,0
R 43 218x246-5	218	246	5,0
R 43 218x296-5	218	296	5,0
R 43 218x396-7	218	396	7,0
R 43 246x246-5	246	246	5,0
R 43 246x246-7	246	246	7,0

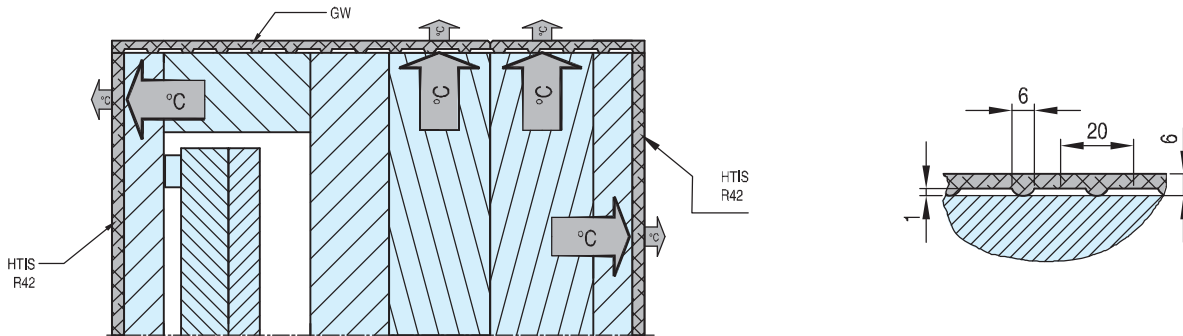
REF	W	L	T
R 43 246x276-5	246	276	5,0
R 43 246x296-5	246	296	5,0
R 43 246x296-7	246	296	7,0
R 43 246x346-5	246	346	5,0
R 43 246x346-7	246	346	7,0
R 43 246x396-5	246	396	5,0
R 43 246x396-7	246	396	7,0
R 43 246x446-7	246	446	7,0
R 43 246x496-8,5	246	496	8,5
R 43 254x246-5	254	246	5,0
R 43 254x246-7	254	246	7,0
R 43 296x276-5	296	276	5,0
R 43 296x276-7	296	276	7,0
R 43 296x296-7	296	296	7,0
R 43 296x296-8,5	296	296	8,5
R 43 296x346-7	296	346	7,0
R 43 296x346-8,5	296	346	8,5
R 43 296x396-7	296	396	7,0
R 43 296x396-8,5	296	396	8,5
R 43 296x446-7	296	446	7,0
R 43 296x496-8,5	296	496	8,5
R 43 296x546-8,5	296	546	8,5
R 43 296x546-8,5	296	546	8,5
R 43 296x696-8,5	296	696	8,5
R 43 346x346-7	346	346	7,0
R 43 346x346-8,5	346	346	8,5
R 43 346x396-7	346	396	7,0
R 43 346x396-8,5	346	396	8,5
R 43 346x446-8,5	346	446	8,5
R 43 346x496-7	346	496	7,0
R 43 346x496-8,5	346	496	8,5
R 43 346x546-8,5	346	546	8,5
R 43 346x596-8,5	346	596	8,5
R 43 346x696-8,5	346	696	8,5
R 43 396x396-7	396	396	7,0
R 43 396x396-8,5	396	396	8,5
R 43 396x446-7	396	446	7,0
R 43 396x446-8,5	396	446	8,5

REF	W	L	T
R 43 396x496-7	396	496	7,0
R 43 396x496-8,5	396	496	8,5
R 43 396x546-7	396	546	7,0
R 43 396x546-8,5	396	546	8,5
R 43 396x596-8,5	396	596	8,5
R 43 396x696-8,5	396	696	8,5
R 43 446x446-8,5	446	446	8,5
R 43 446x496-8,5	446	496	8,5
R 43 446x546-8,5	446	546	8,5
R 43 446x596-8,5	446	596	8,5
R 43 446x696-8,5	446	696	8,5
R 43 496x496-8,5	496	496	8,5
R 43 496x496-8,5	496	496	8,5
R 43 496x546-7	496	546	7,0
R 43 496x546-8,5	496	546	8,5
R 43 496x596-8,5	496	596	8,5
R 43 496x696-8,5	496	696	8,5
R 43 496x696-8,5	496	696	8,5
R 43 546x546-8,5	546	546	8,5
R 43 546x596-8,5	546	596	8,5
R 43 546x646-8,5	546	646	8,5
R 43 546x696-8,5	546	696	8,5
R 43 596x596-8,5	596	596	8,5
R 43 596x696-8,5	596	696	8,5
R 43 646x596-8,5	646	596	8,5
R 43 646x696-8,5	646	696	8,5
R 43 646x796-8,5	646	796	8,5
R 43 646x896-8,5	646	896	8,5
R 43 646x996-8,5	646	996	8,5
R 43 696x696-8,5	696	696	8,5
R 43 696x796-8,5	696	796	8,5
R 43 696x896-8,5	696	896	8,5
R 43 696x996-8,5	696	996	8,5
R 43 796x796-8,5	796	796	8,5
R 43 796x896-8,5	796	896	8,5
R 43 796x996-8,5	796	996	8,5
R 43 896x896-8,5	896	896	8,5
R 43 896x996-8,5	896	996	8,5



GW

Corrugated thermal insulation sheet



REF	W	L	T
GW 1225 2000 06	1225	2000	6
GW 1225 1000 06	1225	1000	6

Thermal insulation sheets, unilaterally corrugated with a cross pattern, serve for covering molds on press, runnerless and tempered injection molds. Especially in the moldmaking sector an eye is kept on energy savings on a large scale. Precious thermal energy is lost by means of heat reflection and heat convection. In order to reduce these losses the corrugated thermal insulation sheet has been developed. On installation of the insulation sheet the corrugated side should always be joined to the mold. The air is trapped what leads to an even better insulation. Socket head cap screws can be placed in every position without losing heat due to the cross pattern. GW sheets are known for their compressive strength in relation to an excellent low thermal conductivity. The insulation material consists of Glassfibre and an impact resistant, thermosetting resinbonded mix.

Technical data	Unit	Single corrugated
Compressive strength	23°C 200°C N/mm ²	300 100
Working temperature	°C	200
Thermal conductivity	W/mK	0,10
Moisture absorption	%	0,10
Specific weight	g/cm ³	1,4
Thickness	mm	6
Parallellity ground	mm/m	±0,1
Flexural strength	N/mm ²	200