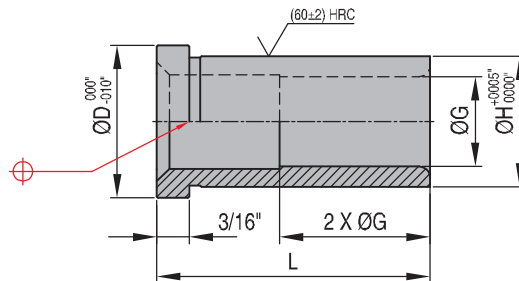




5700 - 5960

Leader pins

Mat.: C1117 - USA



REF	G	L	H	D
5700	3/4"	7/8"	1.1255"	1.302"
5701	3/4"	1 3/8"	1.1255"	1.302"
5702	3/4"	1 7/8"	1.1255"	1.302"
5703	3/4"	2 3/8"	1.1255"	1.302"
5704	3/4"	2 7/8"	1.1255"	1.302"
5705	3/4"	3 3/8"	1.1255"	1.302"
5706	3/4"	3 7/8"	1.1255"	1.302"
5707	3/4"	4 3/8"	1.1255"	1.302"
5708	3/4"	4 7/8"	1.1255"	1.302"
5709	3/4"	5 7/8"	1.1255"	1.302"
5710	7/8"	7/8"	1.2505"	1.427"
5711	7/8"	1 3/8"	1.2505"	1.427"
5712	7/8"	1 7/8"	1.2505"	1.427"
5713	7/8"	2 3/8"	1.2505"	1.427"
5714	7/8"	2 7/8"	1.2505"	1.427"
5715	7/8"	3 3/8"	1.2505"	1.427"
5716	7/8"	3 7/8"	1.2505"	1.427"
5717	7/8"	4 3/8"	1.2505"	1.427"
5718	7/8"	4 7/8"	1.2505"	1.427"
5720	7/8"	5 7/8"	1.2505"	1.427"
5730	1"	7/8"	1.3755"	1.552"
5731	1"	1 3/8"	1.3755"	1.552"
5732	1"	1 7/8"	1.3755"	1.552"
5733	1"	2 3/8"	1.3755"	1.552"
5734	1"	2 7/8"	1.3755"	1.552"
5735	1"	3 3/8"	1.3755"	1.552"
5736	1"	3 7/8"	1.3755"	1.552"
5737	1"	4 3/8"	1.3755"	1.552"
5738	1"	4 7/8"	1.3755"	1.552"
5740	1"	5 7/8"	1.3755"	1.552"
5750	1 1/4"	7/8"	1.6255"	1.802"
5751	1 1/4"	1 3/8"	1.6255"	1.802"
5752	1 1/4"	1 7/8"	1.6255"	1.802"
5753	1 1/4"	2 3/8"	1.6255"	1.802"

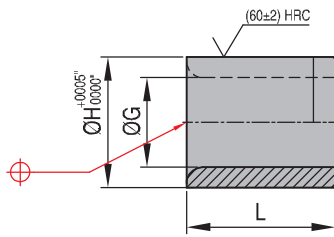
REF	G	L	H	D
5754	1 1/4"	2 7/8"	1.6255"	1.802"
5755	1 1/4"	3 3/8"	1.6255"	1.802"
5756	1 1/4"	3 7/8"	1.6255"	1.802"
5757	1 1/4"	4 3/8"	1.6255"	1.802"
5758	1 1/4"	4 7/8"	1.6255"	1.802"
5760	1 1/4"	5 7/8"	1.6255"	1.802"
5770	1 1/2"	7/8"	2.0005"	2.177"
5771	1 1/2"	1 3/8"	2.0005"	2.177"
5772	1 1/2"	1 7/8"	2.0005"	2.177"
5773	1 1/2"	2 3/8"	2.0005"	2.177"
5774	1 1/2"	2 7/8"	2.0005"	2.177"
5775	1 1/2"	3 3/8"	2.0005"	2.177"
5776	1 1/2"	3 7/8"	2.0005"	2.177"
5777	1 1/2"	4 3/8"	2.0005"	2.177"
5778	1 1/2"	4 7/8"	2.0005"	2.177"
5780	1 1/2"	5 7/8"	2.0005"	2.177"
5901	2"	1 3/8"	2.5005"	2.677"
5902	2"	1 7/8"	2.5005"	2.677"
5903	2"	2 3/8"	2.5005"	2.677"
5904	2"	2 7/8"	2.5005"	2.677"
5905	2"	3 3/8"	2.5005"	2.677"
5906	2"	3 7/8"	2.5005"	2.677"
5907	2"	4 3/8"	2.5005"	2.677"
5908	2"	4 7/8"	2.5005"	2.677"
5910	2"	5 7/8"	2.5005"	2.677"
5951	2 1/2"	1 3/8"	3.2505"	3.427"
5952	2 1/2"	1 7/8"	3.2505"	3.427"
5953	2 1/2"	2 3/8"	3.2505"	3.427"
5954	2 1/2"	2 7/8"	3.2505"	3.427"
5955	2 1/2"	3 3/8"	3.2505"	3.427"
5956	2 1/2"	3 7/8"	3.2505"	3.427"
5957	2 1/2"	4 3/8"	3.2505"	3.427"
5958	2 1/2"	4 7/8"	3.2505"	3.427"
5960	2 1/2"	5 7/8"	3.2505"	3.427"



Leader pins

Mat.: C1117 - USA

5500 - 5510



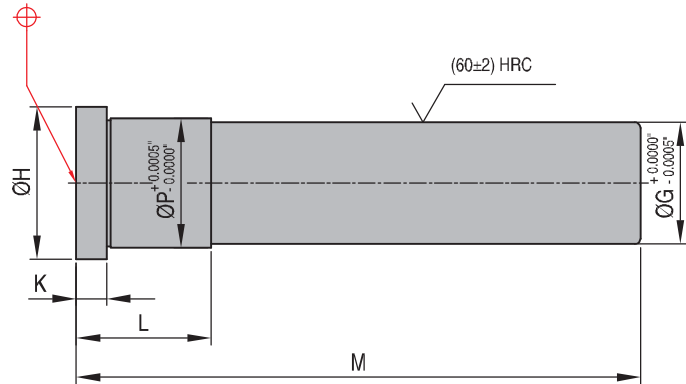
REF	G	L	H
5500	0,750"	27/32"	1.1255"
5501	0,750"	1 11/32"	1.1255"
5502	0,875"	1 11/32"	1.2505"
5503	1,000"	1 11/32"	1.3755"
5504	1,250"	1 11/32"	1.6255"
5505	1,250"	1 27/32"	1.6255"
5506	1,500"	1 11/32"	2.0005"
5507	1,500"	1 27/32"	2.0005"
5508	2,000"	3 7/8"	2.5005"
5509	2,500"	4 7/8"	3.2505"
5510	3,000"	4 7/8"	3.7505"



5000 - 6032

Leader pins

Mat.: C1117 - USA



REF	G	M	L	H	K	P
5000 GL	3/4"	1 3/4"	7/8"	0,99"	3/16"	0,751"
5001 GL	3/4"	2 1/4"	7/8"	0,99"	3/16"	0,751"
5002 GL	3/4"	2 3/4"	7/8"	0,99"	3/16"	0,751"
5003 GL	3/4"	3 1/4"	7/8"	0,99"	3/16"	0,751"
5004 GL	3/4"	3 3/4"	7/8"	0,99"	3/16"	0,751"
5005 GL	3/4"	4 1/4"	1 3/8"	0,99"	3/16"	0,751"
5006 GL	3/4"	4 3/4"	1 3/8"	0,99"	3/16"	0,751"
5007 GL	3/4"	5 1/4"	1 3/8"	0,99"	3/16"	0,751"
5008 GL	3/4"	5 3/4"	1 7/8"	0,99"	3/16"	0,751"
5009 GL	3/4"	6 1/4"	1 7/8"	0,99"	3/16"	0,751"
5010 GL	3/4"	6 3/4"	1 7/8"	0,99"	3/16"	0,751"
5011 GL	3/4"	7 1/4"	1 7/8"	0,99"	3/16"	0,751"
5012 GL	3/4"	7 3/4"	1 7/8"	0,99"	3/16"	0,751"
5015 GL	3/4"	9 1/4"	1 7/8"	1,115"	3/16"	0,751"
5099 GL	7/8"	1 3/4"	1 7/8"	1,115"	1/4"	0,876"
5100 GL	7/8"	2 1/4"	1 7/8"	1,115"	1/4"	0,876"
5101 GL	7/8"	2 3/4"	1 7/8"	1,115"	1/4"	0,876"
5102 GL	7/8"	3 1/4"	1 7/8"	1,115"	1/4"	0,876"
5103 GL	7/8"	3 3/4"	1 7/8"	1,115"	1/4"	0,876"
5104 GL	7/8"	4 1/4"	1 3/8"	1,115"	1/4"	0,876"
5105 GL	7/8"	4 3/4"	1 3/8"	1,115"	1/4"	0,876"
5106 GL	7/8"	5 1/4"	1 3/8"	1,115"	1/4"	0,876"
5107 GL	7/8"	5 3/4"	1 3/8"	1,115"	1/4"	0,876"
5108 GL	7/8"	6 1/4"	1 7/8"	1,115"	1/4"	0,876"
5109 GL	7/8"	6 3/4"	1 7/8"	1,115"	1/4"	0,876"
5110 GL	7/8"	7 1/4"	1 7/8"	1,115"	1/4"	0,876"
5111 GL	7/8"	7 3/4"	1 7/8"	1,115"	1/4"	0,876"
5112 GL	7/8"	8 1/4"	1 7/8"	1,115"	1/4"	0,876"
5113 GL	7/8"	8 3/4"	1 7/8"	1,115"	1/4"	0,876"
5117 GL	7/8"	10 3/4"	1 7/8"	1,115"	1/4"	0,876"
5120 GL	7/8"	12 1/4"	1 7/8"	1,115"	1/4"	0,876"
5198 GL	1"	1 3/4"	1 7/8"	1,240"	1/4"	1,001"
5199 GL	1"	2 1/4"	1 7/8"	1,240"	1/4"	1,001"
5200 GL	1"	2 3/4"	1 7/8"	1,240"	1/4"	1,001"
5201 GL	1"	3 1/4"	1 7/8"	1,240"	1/4"	1,001"
5202 GL	1"	3 3/4"	1 7/8"	1,240"	1/4"	1,001"
5203 GL	1"	4 1/4"	1 3/8"	1,240"	1/4"	1,001"
5204 GL	1"	4 3/4"	1 3/8"	1,240"	1/4"	1,001"
5205 GL	1"	5 1/4"	1 3/8"	1,240"	1/4"	1,001"
5206 GL	1"	5 3/4"	1 3/8"	1,240"	1/4"	1,001"
5207 GL	1"	6 1/4"	1 3/8"	1,240"	1/4"	1,001"
5208 GL	1"	6 3/4"	1 7/8"	1,240"	1/4"	1,001"

REF	G	M	L	H	K	P
5209 GL	1"	7 1/4"	1 7/8"	1,240"	1/4"	1,001"
5210 GL	1"	7 3/4"	1 7/8"	1,240"	1/4"	1,001"
5211 GL	1"	8 1/4"	1 7/8"	1,240"	1/4"	1,001"
5212 GL	1"	8 3/4"	1 7/8"	1,240"	1/4"	1,001"
5213 GL	1"	9 1/4"	1 7/8"	1,240"	1/4"	1,001"
5214 GL	1"	9 3/4"	1 7/8"	1,240"	1/4"	1,001"
5215 GL	1"	10 1/4"	1 7/8"	1,240"	1/4"	1,001"
5216 GL	1"	10 3/4"	1 7/8"	1,240"	1/4"	1,001"
5217 GL	1"	11 1/4"	1 7/8"	1,240"	1/4"	1,001"
5218 GL	1"	11 3/4"	1 7/8"	1,240"	1/4"	1,001"
5219 GL	1"	12 1/4"	1 7/8"	1,240"	1/4"	1,001"
5300 GL	1 1/4"	2 3/4"	7/8"	1,490"	5/16"	1,251"
5301 GL	1 1/4"	3 1/4"	7/8"	1,490"	5/16"	1,251"
5302 GL	1 1/4"	3 3/4"	7/8"	1,490"	5/16"	1,251"
5303 GL	1 1/4"	4 1/4"	7/8"	1,490"	5/16"	1,251"
5304 GL	1 1/4"	4 3/4"	1 3/8"	1,490"	5/16"	1,251"
5305 GL	1 1/4"	5 1/4"	1 3/8"	1,490"	5/16"	1,251"
5306 GL	1 1/4"	5 3/4"	1 3/8"	1,490"	5/16"	1,251"
5307 GL	1 1/4"	6 1/4"	1 3/8"	1,490"	5/16"	1,251"
5308 GL	1 1/4"	6 3/4"	1 7/8"	1,490"	5/16"	1,251"
5309 GL	1 1/4"	7 1/4"	1 7/8"	1,490"	5/16"	1,251"
5310 GL	1 1/4"	7 3/4"	1 7/8"	1,490"	5/16"	1,251"
5311 GL	1 1/4"	8 1/4"	1 7/8"	1,490"	5/16"	1,251"
5312 GL	1 1/4"	8 3/4"	1 7/8"	1,490"	5/16"	1,251"
5313 GL	1 1/4"	9 1/4"	1 7/8"	1,490"	5/16"	1,251"
5314 GL	1 1/4"	9 3/4"	1 7/8"	1,490"	5/16"	1,251"
5315 GL	1 1/4"	10 1/4"	1 7/8"	1,490"	5/16"	1,251"
5316 GL	1 1/4"	10 3/4"	1 7/8"	1,490"	5/16"	1,251"
5317 GL	1 1/4"	11 1/4"	1 7/8"	1,490"	5/16"	1,251"
5318 GL	1 1/4"	11 3/4"	1 7/8"	1,490"	5/16"	1,251"
5319 GL	1 1/4"	12 1/4"	1 7/8"	1,490"	5/16"	1,251"
5320 GL	1 1/4"	12 3/4"	1 7/8"	1,490"	5/16"	1,251"
5322 GL	1 1/4"	13 3/4"	1 7/8"	1,490"	5/16"	1,251"
5324 GL	1 1/4"	14 3/4"	1 7/8"	1,490"	5/16"	1,251"
5326 GL	1 1/4"	15 3/4"	1 7/8"	1,490"	5/16"	1,251"
5402 GL	1 1/4"	3 3/4"	1 3/8"	1,490"	5/16"	1,251"
5403 GL	1 1/2"	4 1/4"	1 3/8"	1,740"	5/16"	1,501"
5404 GL	1 1/2"	4 3/4"	1 3/8"	1,740"	5/16"	1,501"
5405 GL	1 1/2"	5 1/4"	1 3/8"	1,740"	5/16"	1,501"
5406 GL	1 1/2"	5 3/4"	1 3/8"	1,740"	5/16"	1,501"
5407 GL	1 1/2"	6 1/4"	1 3/8"	1,740"	5/16"	1,501"
5408 GL	1 1/2"	6 3/4"	1 3/8"	1,740"	5/16"	1,501"

REF	G	M	L	H	K	P
5410 GL	1 1/2"	7 3/4"	1 7/8"	1,740"	5/16"	1,501"
5412 GL	1 1/2"	8 3/4"	1 7/8"	1,740"	5/16"	1,501"
5414 GL	1 1/2"	9 3/4"	1 7/8"	1,740"	5/16"	1,501"
5416 GL	1 1/2"	10 3/4"	1 7/8"	1,740"	5/16"	1,501"
5418 GL	1 1/2"	11 3/4"	1 7/8"	1,740"	5/16"	1,501"
5420 GL	1 1/2"	12 3/4"	1 7/8"	1,740"	5/16"	1,501"
5422 GL	1 1/2"	13 3/4"	1 7/8"	1,740"	5/16"	1,501"
5424 GL	1 1/2"	14 3/4"	1 7/8"	1,740"	5/16"	1,501"
5626 GL	2"	15 3/4"	1 7/8"	2,240"	5/16"	2,001"
5606 GL	2"	5 3/4"	1 7/8"	2,240"	5/16"	2,001"
5608 GL	2"	6 3/4"	1 7/8"	2,240"	5/16"	2,001"
5610 GL	2"	7 3/4"	1 7/8"	2,240"	5/16"	2,001"
5612 GL	2"	8 3/4"	1 7/8"	2,240"	5/16"	2,001"
5614 GL	2"	9 3/4"	1 7/8"	2,240"	5/16"	2,001"
5616 GL	2"	10 3/4"	1 7/8"	2,240"	5/16"	2,001"
5618 GL	2"	11 3/4"	1 7/8"	2,240"	5/16"	2,001"
5620 GL	2"	12 3/4"	1 7/8"	2,240"	5/16"	2,001"
5622 GL	2"	13 3/4"	1 7/8"	2,240"	5/16"	2,001"
5624 GL	2"	14 3/4"	1 7/8"	2,240"	5/16"	2,001"
5626 GL	2"	15 3/4"	1 7/8"	2,240"	5/16"	2,001"
5632 GL	2"	18 3/4"	1 7/8"	2,240"	5/16"	2,001"
5806 GL	2 1/2"	5 3/4"	2 3/8"	2,740"	5/16"	2,501"
5808 GL	2 1/2"	6 3/4"	2 3/8"	2,740"	5/16"	2,501"
5810 GL	2 1/2"	7 3/4"	2 3/8"	2,740"	5/16"	2,501"
5812 GL	2 1/2"	8 3/4"	2 3/8"	2,740"	5/16"	2,501"
5814 GL	2 1/2"	9 3/4"	2 3/8"	2,740"	5/16"	2,501"
5816 GL	2 1/2"	10 3/4"	2 3/8"	2,740"	5/16"	2,501"
5818 GL	2 1/2"	11 3/4"	2 3/8"	2,740"	5/16"	2,501"
5820 GL	2 1/2"	12 3/4"	2 3/8"	2,740"	5/16"	2,501"
5822 GL	2 1/2"	13 3/4"	2 3/8"	2,740"	5/16"	2,501"
5824 GL	2 1/2"	14 3/4"	2 3/8"	2,740"	5/16"	2,501"
5826 GL	2 1/2"	15 3/4"	2 3/8"	2,740"	5/16"	2,501"
5828 GL	2 1/2"	16 3/4"	2 3/8"	2,740"	5/16"	2,501"
5832 GL	2 1/2"	18 3/4"	2 3/8"	2,740"	5/16"	2,501"
6012 GL	3"	8 3/4"	2 1/8"	3,365"	1/2"	3,001"
6016 GL	3"	10 3/4"	2 1/8"	3,365"	1/2"	3,001"
6020 GL	3"	12 3/4"	2 1/8"	3,365"	1/2"	3,001"
6024 GL	3"	14 3/4"	2 1/8"	3,365"	1/2"	3,001"
6028 GL	3"	16 3/4"	2 1/8"	3,365"	1/2"	3,001"
6032 GL	3"	18 3/4"	2 1/8"	3,365"	1/2"	3,001"