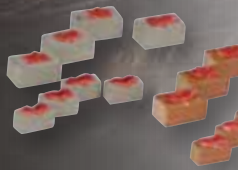




**Polishing-,  
Ceramic Stones  
& Accessories**

5

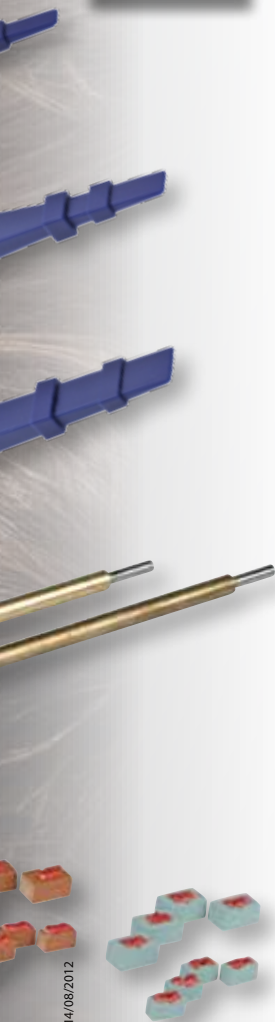






## Polishing-, Ceramic Stones & Accessories

Polishing Stones.....	2
Ceramic Stones.....	16
Super Diamond Stones .....	26
Crystal Fiber Stones.....	30



14/08/2012



## Info

### Polishing stones

REF	Material					Application			Wear	
	Tool steel	Aluminium	Non-ferro	High grade tool steel	Spark eroding structure	0 = Finish machining	5 = Pre-machining	High gloss finish	0 = Slow	5 = Fast
<b>PT 250</b>						2-5			3	
<b>PT 450</b>						1-3			3	
<b>PT 470</b>						1-5			4	
<b>PT 550</b>						2-5			2	
<b>PT 600</b>						2-5			3	
<b>PT 650</b>						0-5			4	
<b>PT 700</b>						3-5			3	
<b>PT 750</b>						0-5			1	
<b>PT 850</b>						0-5			4	
<b>PT 880</b>						0-5			3	
<b>PT 900</b>						0			5	

To avoid build-ups and resulting cracks it is recommended to always use a suitable cutting fluid or cutting oil (BL 10/WK 35) when applying polishing stones with grain size (320), 400, 600 or 900. In this way a blunting of the bond will be avoided and a constant resharping of the cutting grains is guaranteed.



## Polishing stones

## Info

	Stock Re- moval		Bonding hardness		Method			Application		Treated			
	0 = Slow 5 = Fast		0 = Soft 5 = Hard		Hand opera- tion	Filing hand piece	Ultra sonic	Dry	Wet	Resin bonded	Oil	Special	Sulphur
	4		3										
	4		3										
	4		3										
	4		4										
	4		3										
	5		2										
	4		3										
	4		5										
	5		2										
	4		3										
	1		0										

To avoid build-ups and resulting cracks it is recommended to always use a suitable cutting fluid or cutting oil (BL 10/WK 35) when applying polishing stones with grain size (320), 400, 600 or 900. In this way a blunting of the bond will be avoided and a constant resharpening of the cutting grains is guaranteed.



## PT 250 ...

### Polishing stones



#### Features:

- Total length = 150 mm
- Abrasive material: Aluminium Oxide
- Color: yellow
- A special very hard, sulphured stone for the machining of eroded surfaces.
- We recommend to apply cutting fluid or cutting oil when using fine grain stones, coarse grain stones can be used in a dry state.

REF	* Grain						
	120	150	180	320	400	600	
<b>PT 250 3 x 13</b> - *	3,56	3,56	3,56	3,92	3,92	4,60	12
<b>PT 250 6 x 6</b> - *	3,22	3,56	3,56	4,24	4,24	5,00	12
<b>PT 250 6 x 13</b> - *	4,24	4,24	4,24	4,60	5,00	5,71	12
<b>PT 250 10 x 10</b> - *	5,00	5,00	5,00	5,35	5,35	6,38	12
<b>PT 250 13 x 13</b> - *	5,71	5,71	6,04	7,08	7,08	9,18	12
<b>PT 250 15 x 20</b> - *	8,84	8,51	8,84	9,60	9,60	12,75	6
<b>PT 250 20 x 25</b> - *	15,77	15,08	15,08	16,80	16,80	17,15	4

## PT 450 ...

### Polishing stones



#### Features:

- Total length = 150 mm
- Abrasive material: Aluminium Oxide
- Color: white
- Medium-hard stone for general polishing tasks on sectional steels.
- Machining of all grades of steel by hand and by filing machine.
- For coarse grain size, use in dry state.
- For fine grain size, use cutting fluid or diluent.
- Special stone for sectional or die steels.

REF	* Grain				
	220	320	400	600	
<b>PT 450 3 x 6</b> - *	2,87	2,87	2,87	3,56	12
<b>PT 450 3 x 13</b> - *	2,87	3,22	3,22	3,92	12
<b>PT 450 6 x 6</b> - *	2,87	3,22	3,22	3,92	12
<b>PT 450 6 x 13</b> - *	3,92	4,24	4,24	5,00	12
<b>PT 450 13 x 13</b> - *	5,00	6,04	6,04	7,08	12
<b>PT 450 13 x 25</b> - *	7,08	8,51	8,51	9,95	6



## Polishing Stones

PT 470 ...

## Features:

- Total length = 150 mm
- Abrasive material: Aluminium Oxide
- Color: white
- Medium hard, especially treated stone for the processing of Aluminium.
- Fast removal of material is achieved due to high cutting efficiency.
- It leaves no scratches or damage on the surface.
- The use of lapping- and polishing oil is recommended



REF		* Grain						
		150	220	320	400	600		
<b>PT 470 3</b>	x 6 - *	2,87	2,87	3,56	3,56	4,24		12
<b>PT 470 3</b>	x 13 - *	3,22	3,22	3,92	3,56	4,60		12
<b>PT 470 6</b>	x 6 - *	3,22	3,22	3,92	3,56	4,60		12
<b>PT 470 6</b>	x 13 - *	3,92	3,92	5,35	5,00	6,38		12

## Polishing Stones

PT 550 ...

## Features:

- Total length = 150 mm
- Abrasive material: Aluminium Oxide
- Color: dark brown
- Profile-stable special stone for the removal of the surface left by EDM.
- The high cutting capacity ensures fast removal of material.
- Suitable for machining by hand, with a filing machine and in particular with ultrasonic polishing machines.
- The use of an oil-free lubricant is recommended.

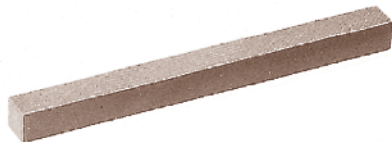


REF		* Grain										
		100	120	150	180	220	280	320	400			600
<b>PT 550 3</b>	x 3 - *					2,53		2,87	2,87	3,22		12
<b>PT 550 3</b>	x 6 - *	2,53	2,53	2,53	2,53	2,53	3,22	3,22	3,22	3,56		12
<b>PT 550 3</b>	x 13 - *					3,22		3,56	3,56	3,92		12
<b>PT 550 6</b>	x 6 - *					3,22	3,56	3,56	3,56	3,92		12
<b>PT 550 6</b>	x 13 - *	3,92	3,92	3,92	3,92	3,92	4,60	4,60	4,60	5,35		12
<b>PT 550 10</b>	x 10 - *				4,60	4,60		5,00				12




## PT 600 ...

### Polishing stones



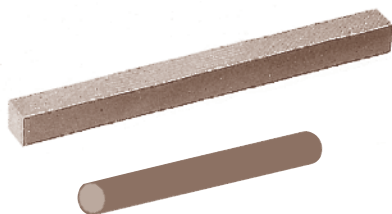
#### Features:

- Total length = 150 mm
- Abrasive material: Aluminium Oxide
- Color: dark brown
- A semi-hard adaptable stone for the removal of EDM surface.
- Because of its softer bonding it is in particular suitable for polishing by hand.
- The use of an oil-alcohol lubricant is recommended.

REF	* Grain									
	100	120	150	180	220	280	320	400	600	
<b>PT 600 3</b> x 6 - *	2,53	2,53	2,53	2,53	2,53	3,22	2,53	3,22	3,56	12
<b>PT 600 3</b> x 13 - *		3,22		3,22	3,22	3,56	3,56	3,56	3,92	12
<b>PT 600 6</b> x 6 - *				2,87	2,87		3,56	3,56	3,92	12
<b>PT 600 6</b> x 13 - *		3,92	3,92	3,92	3,92		4,60	4,60	5,35	12


## PT 650 ...

### Polishing stones



#### Features:

- Total length = 150 mm
- Abrasive material: Aluminium Oxide
- Color: brown
- A semi-hard to soft stone, for hand polishing.
- For hand filing devices.
- Produces a soft finish and wears off in a very even way.
- Especially suitable for contoured surfaces due to ideal adaptability, for non-ferrous metals and chromium-nickel steels.

REF	* Grain									
	100	150	180	220	280	320	400	600	900	
<b>PT 650 3</b> x 6 - *	2,87	2,87	2,87	2,87	3,22	3,22	3,22	3,92	4,60	12
<b>PT 650 3</b> x 13 - *		3,22	3,56	3,56	3,92	3,92	3,92	4,60	5,00	12
<b>PT 650 6</b> x 6 - *		3,22		3,22		3,56	3,56	4,24	4,24	12
<b>PT 650 6</b> x 13 - *	4,24	4,24	4,24	4,24	4,60	4,60	4,60	5,71	7,08	12
<b>PT 650 6</b> x 20 - *		5,35		5,35		5,71	5,71	7,81	6,72	12
<b>PT 650 10</b> x 10 - *	4,60	4,60		4,60	5,00	5,00	5,00	6,38		12
<b>PT 650 13</b> x 25 - *	.		7,38	13,12	17,09	8,94	10,23	17,09	21,10	6
<b>PT 650</b> Ø 6 - *		.		8,16		9,18	9,18	10,98		6
<b>PT 650</b> Ø 10 - *	.		.		.	9,95	9,95			6






## Polishing Stones

PT 700 ...

### Features:

- Total length = 150 mm
- Abrasive material: Aluminium Oxide
- Color: cream-coloured/ivory white
- A hard porous stone for all polishing tasks.
- Treatment with a special oil prevents loading.
- The use of an oil-alcohol lubricant is recommended.



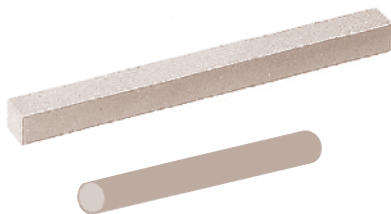
REF	* Grain						
	120	150	220	320	400	600	
<b>PT 700 3</b> x 6 - *	2,87	2,87	2,87	3,22	3,22	3,92	12
<b>PT 700 3</b> x 13 - *	3,22	3,22	3,22	3,92	3,92	4,24	12
<b>PT 700 6</b> x 6 - *	2,87	3,22	3,22	3,92	3,92	4,60	12
<b>PT 700 6</b> x 13 - *	4,24	4,24	4,24	4,60	4,60	5,35	12
<b>PT 700 10</b> x 10 - *	5,00	5,00	5,00	5,00	5,00		12
<b>PT 700 13</b> x 25 - *	24,93	24,93	24,93	29,01	29,01	32,19	6
<b>PT 700</b> Ø 6 - *	7,81	7,81	8,16	8,51	8,51	11,32	6


## Polishing Stones

PT 750 ...

### Features:

- Total length = 150 mm
- Abrasive material: Aluminium Oxide, resin bonded
- Color: light brown
- A hard, resin-bonded stone with high strength against fracture, high shape consistency and cutting efficiency.
- Resin bonding causes a buffer effect between the grains.
- A better finish, considering the respective grain size in connection with the hard bonding.
- Hand operation and in hand filing devices
- For removal of EDM-layers.

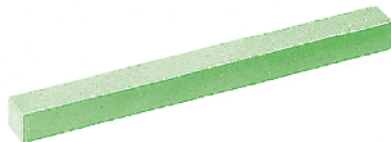


REF	* Grain							
	120	180	220	280	320	400		600
<b>PT 750 3</b> x 6 - *	3,92	3,92	3,92	3,92	4,24	4,24	5,35	12
<b>PT 750 6</b> x 6 - *		3,92	4,24	4,60	4,60	5,00	5,35	12
<b>PT 750 6</b> x 13 - *		5,35	5,35	6,04	6,72	6,72	6,72	12
<b>PT 750</b> Ø 6 - *				.	12,07			6




PT 850 ...

## Polishing stones



### Features:

- Total length = 150 mm
- Abrasive material: Silicon carbide
- Color: green
- A soft-bonded, porous stone with high cutting efficiency and soft finish.
- Hand operation or application in hand filing devices.
- For machining of contoured surfaces, the stone adapts very quickly because of its soft bonding.
- For removal of EDM-layers.

REF	* Grain						
	120	150	220	320	400	600	
<b>PT 850 3</b> x 6 - *	2,53		2,87				12
<b>PT 850 3</b> x 13 - *	3,22	3,22	3,22	3,22	3,56	3,92	12
<b>PT 850 6</b> x 6 - *	2,87	2,87	2,87	3,56	3,56	4,24	12
<b>PT 850 6</b> x 13 - *	3,92	3,92	3,92	4,60	4,60	5,35	12
<b>PT 850 10</b> x 10 - *		4,60	4,60	5,00	5,00	13,15	12
<b>PT 850 13</b> x 13 - *	•	5,35	5,35	6,04	6,04		12
<b>PT 850 13</b> x 25 - *		11,84	6,72	7,65	7,65	8,71	12

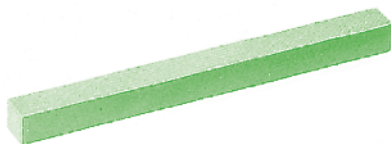



## Polishing Stones

PT 880 ...

## Features:

- Total length = 150 mm
- Abrasive material: Silicon carbide
- Color: green
- Slightly harder bonding material than PT 850.
- Special stone for the removal of the residue left by ESM on cut and sectional steels.
- Particular suitable for the treatment of hardened steels, punches, dies, steel castings and hot-working steels of HRC 47-63 and harder.
- The use of an oil-alcohol lubricant is recommended.



REF	* Grain						
	120	150	220	320	400	600	
<b>PT 880 4</b> x 4 - *			2,53	2,87	2,87	3,22	12
<b>PT 880 3</b> x 6 - *	2,53	2,53	2,87	3,22	3,22	3,56	12
<b>PT 880 3</b> x 13 - *	3,22	3,22	3,22	3,22	3,22	3,56	12
<b>PT 880 6</b> x 6 - *	2,87	2,87	2,87	3,56	3,56	3,92	12
<b>PT 880 6</b> x 13 - *	3,92	3,92	3,92	4,60	4,24	5,35	12
<b>PT 880 10</b> x 10 - *			4,60	5,00	5,00	7,98	12
<b>PT 880 13</b> x 13 - *		5,35	5,35	6,04	6,04	7,81	12
<b>PT 880 13</b> x 25 - *	7,49	.	7,49	8,71	9,51	10,50	12

5




PT 900 ...

## Polishing stones



### Features:

- Total length = 150 mm
- Abrasive material: Levigated Alumina
- Color: white
- It is a very soft-bonded stone, which does not get blunt.
- A very uniform, soft polished section will be achieved.
- Further polishing with diamond paste of grain size 6 or 3  $\mu\text{m}$  will result in high gloss finish.
- Advantageously used at the beginning of minor polishing repairs, operated by hand and using a suitable cutting oil.

REF	* Grain			€
		900		
<b>PT 900 3</b> x 6 - *		✓	12	3,92
<b>PT 900 3</b> x 13 - *		✓	12	4,24
<b>PT 900 6</b> x 6 - *		✓	12	4,24
<b>PT 900 6</b> x 13 - *		✓	12	.

PT

## Sample kit



- set of 8 different types
- Dimension : 6x13x 150 mm

### Includes:

- PT250 Grain 400
- PT250 Grain 220
- PT450 Grain 220 SE
- PT450 Grain 400 SE
- PT650 Grain 220
- PT650 Grain 400
- PT850 Grain 220
- PT850 Grain 400

REF	€
<b>PT</b>	.

• upon request

14/08/2012

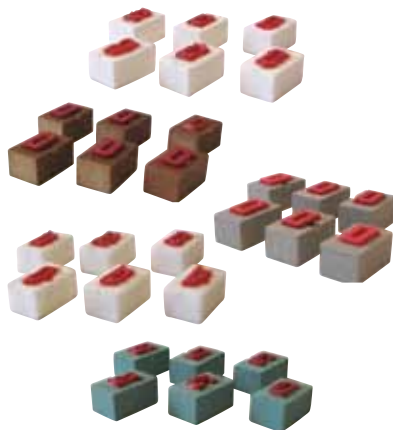


## EasyLap, Polishing stones

PT ... EL

## Features:

- Dimensions = 10 x 5 x 6 mm and 13 x 8 x 6 mm
- Material and features see polishing stones PT 450 - PT 880
- Identification of grain by color code:
  - Grain 220 - green
  - Grain 320 - red
  - Grain 400 - orange
  - Grain 600 - yellow
  - Grain 900 - white
- To be used in combination of push rods EasyLap



REF	Dimensions	Mat see	* Grain					
			220	320	400	600	900	
<b>PT 4510 EL*</b>	10 x 5 x 6 mm	PT 450 white	0,76	0,80	0,83	0,83		10
<b>PT 5510 EL*</b>	10 x 5 x 6 mm	PT 550 dark brown	0,74	0,78	0,80	0,80		10
<b>PT 6510 EL*</b>	10 x 5 x 6 mm	PT 650 brown	0,76	0,80	0,83	0,83	0,91	10
<b>PT 7010 EL*</b>	10 x 5 x 6 mm	PT 700 ivory	0,76	0,80	0,83	0,83		10
<b>PT 8810 EL*</b>	10 x 5 x 6 mm	PT 880 green	0,76	0,80	0,83	0,83		10

REF	Dimensions	Mat see	* Grain					
			220	320	400	600	900	
<b>PT 4513 EL*</b>	13 x 8 x 6 mm	PT 450 white	0,95	1,03	1,05	1,05		10
<b>PT 5513 EL*</b>	13 x 8 x 6 mm	PT 550 dark brown	0,93	1,01	1,03	1,03		10
<b>PT 6513 EL*</b>	13 x 8 x 6 mm	PT 650 brown	0,95	1,03	1,05	1,05	1,13	10
<b>PT 7013 EL*</b>	13 x 8 x 6 mm	PT 700 ivory	0,95	1,03	1,05	1,09		10
<b>PT 8813 EL*</b>	13 x 8 x 6 mm	PT 880 green	0,95	1,03	1,05	1,05		10



## PT 0 ... EL

EasyLap, Push rods



Features:

- Mat.: Brass

REF	Dimensions	shape		€
<b>PT 01 EL</b>	150 mm	<b>1</b> flat	1	12,32
<b>PT 02 EL</b>	150 mm	<b>2</b> high	1	12,32
<b>PT 03 EL</b>	150 mm	<b>3</b> medium	1	12,32
<b>PT 04 EL</b>	80 mm	<b>4</b> short	1	12,32

## PT 1000 EL

EasyLap, Start set



Includes:

- EasyLap, polishing stones:
  - 5 PT 4510 EL 320
  - 5 PT 5510 EL 320
  - 5 PT 6510 EL 320
  - 5 PT 7010 EL 320
  - 5 PT 8810 EL 320
  - 5 PT 2513 EL 320
  - 5 PT 4513 EL 320
  - 5 PT 6513 EL 320
  - 5 PT 7013 EL 320
  - 5 PT 8813 EL 320
- 1 EasyLap push rod PT 01 EL
- 1 EasyLap push rod PT 02 EL
- 1 Storage box

REF	€
<b>PT 1000 EL</b>	61,33

## WK 35

Lapping and polishing oil



Features:

- Suitable for all PT-polishing stones and diamond pastes

REF		€
<b>WK 35</b>	1 l	13,44

• upon request

14/08/2012



## Polishing stoneholder

PT 220

## Features:

- Polishing stoneholders with capacity of max. 14,0 mm.
- Shank-Ø: 3 mm
- Mat.: Steel

REF	€
PT 220	49,62



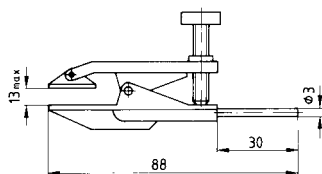
## Polishing stoneholder

PT 300

## Features:

- Polishing stoneholder up to 13 mm
- Mat.: Steel

REF	€
PT 300	90,88



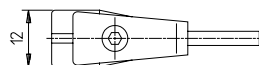
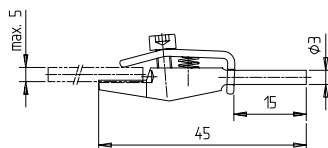
## Toolholders «Mini»

MSH 0503

## Features:

- Holder for ceramic stones
- Mat.: Steel

REF	€
MSH 0503	11,65





PT 350

Polishing stoneholder



Features:

- For polishing stones of 3x6, 3x13 and 6x6 mm in size
- Mat.: plastic



REF	€
<b>PT 350</b>	<b>7,46</b>

AZ 220

Bench stones



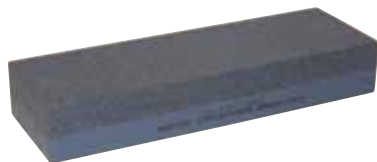
Features:

- Abrasive material: Aluminium-Oxide
- Total length: 150 mm
- Dimension: 25 x 50 mm
- Grain size: 120 / 320

REF	€
<b>AZ 220</b>	<b>15,43</b>

AZ 245

Bench stones



Features:

- Abrasive material: Silicon carbide
- Total length: 150 mm
- Dimension: 25 x 50 mm
- Grain size: 120 / 320

REF	€
<b>AZ 245</b>	<b>17,15</b>

• upon request

14/08/2012





## Grinding stones

AZ ...

## Features:

Oil treated industrial sharpening stones, used for deburring, sharpening and honing.

Available in coarse (120 grit), medium (220 grit), and fine (320 grit).

Abrasive material: Aluminium Oxide



REF	Grain	Total length		€	Shape
AZ 015	120	150	1	15,43	
AZ 040	220			15,43	
AZ 065	320			15,43	
AZ 255	120	100	12	6,04	
AZ 290	220			6,04	
AZ 325	320			6,04	
AZ 465	120	100	12	7,08	
AZ 500	220			7,08	
AZ 535	320			7,08	
AZ 669	120	100	12	9,18	
AZ 683	220			9,18	
AZ 697	320			9,18	
AZ 747	120	100	12	7,08	
AZ 754	220			7,08	
AZ 761	320			7,08	
AZ 770	120	100	12	9,18	
AZ 775	220			9,18	
AZ 780	320			9,18	

5



## Info

## New super stones

**Application**

Ceramic stones are used for surface finishing of molds. They are also excellently applicable for grinding and polishing of alloyed and non-alloyed tool steels, cast iron, various alloy metals, copper, aluminium, silicon, magnetic materials, stones, plastics, etc.

**Shape**

Ceramic grinding stones are of either round or rectangular cross-section.  
Lengths: 40 mm, 100 mm, 150 mm

**Material**

Ceramic stones are made of a new composite material comprised of long fine ceramic fibres and thermo-setting resin. The abrasive ceramic fibres always come out frontally.

**Advantages**

- excellent grinding performance
- long life
- highly stable properties
- nearly unbreakable (flexible)
- uniform surface finishing work
- easily profileable

**Handling**

The surface finishing work is done either manually, or with high-frequency grinding and filing handpieces, or with ultrasonic lap and polishing machines. In the field of high-frequency hand operated machines we recommend our power pack PA 480, PA 240 combined with LA 051 for round ceramic stones or connected to filing handpieces RE 35, RE 55.

Due to their high rigidity shorter dimension of ceramic stones are excellently suited for the ultrasonic surface finishing work. In this application machines like UF 2600 or UF 5600 are connected with handpiece UF 9700.

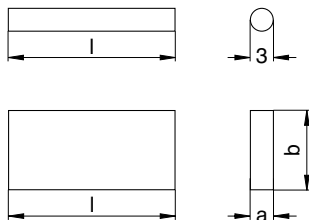
Using this equipment we recommend using ceramic stones at an angle of about 45° between workpiece surface and handpiece. The stones are fixed with adaptors in the handpiece.

Due to their highly stable properties and extremely long life ceramic stones are also used as carriers for diamond pastes when fine and ultra-fine polishing work is necessary for thin break-throughs, cavities and slits. In this case ceramic grinding stones are used parallel to the workpiece surface.



New super stones

NS ...



REF	Grain	Shape	Color	a x b	l	€
<b>NSE 0501 L</b>	120			0,5 x 1	150	8,95
<b>NSG 0501 L</b>	180			0,5 x 1	150	8,95
<b>NSL 0501 L</b>	300			0,5 x 1	150	8,95
<b>NSO 0501 L</b>	400			0,5 x 1	150	8,95
<b>NSP 0501 L</b>	600			0,5 x 1	150	8,95
<b>NSB 0501 L</b>	800			0,5 x 1	150	8,27
<b>NSW 0501 L</b>	1000			0,5 x 1	150	8,27
<b>NSR 0501 L</b>	1200			0,5 x 1	150	8,27
<b>NSE 052 L</b>	120			0,5 x 2	150	8,95
<b>NSG 052 L</b>	180			0,5 x 2	150	8,95
<b>NSL 052 L</b>	300			0,5 x 2	150	8,95
<b>NSO 052 L</b>	400			0,5 x 2	150	8,95
<b>NSP 052 L</b>	600			0,5 x 2	150	8,95
<b>NSB 052 L</b>	800			0,5 x 2	150	8,27
<b>NSW 052 L</b>	1000			0,5 x 2	150	8,27
<b>NSR 052 L</b>	1200			0,5 x 2	150	8,27
<b>NSE 054 L</b>	120			0,5 x 4	150	18,16
<b>NSG 054 L</b>	180			0,5 x 4	150	18,16
<b>NSL 054 L</b>	300			0,5 x 4	150	18,16
<b>NSO 054 L</b>	400			0,5 x 4	150	18,16
<b>NSP 054 L</b>	600			0,5 x 4	150	18,16
<b>NSB 054 L</b>	800			0,5 x 4	150	16,33
<b>NSW 054 L</b>	1000			0,5 x 4	150	16,33
<b>NSR 054 L</b>	1200			0,5 x 4	150	16,33
<b>NSE 056 L</b>	120			0,5 x 6	150	27,58
<b>NSG 056 L</b>	180			0,5 x 6	150	27,58
<b>NSL 056 L</b>	300			0,5 x 6	150	27,58
<b>NSO 056 L</b>	400			0,5 x 6	150	27,58
<b>NSP 056 L</b>	600			0,5 x 6	150	27,58
<b>NSB 056 L</b>	800			0,5 x 6	150	24,59
<b>NSW 056 L</b>	1000			0,5 x 6	150	24,59
<b>NSR 056 L</b>	1200			0,5 x 6	150	24,59

5

• upon request

14/08/2012





NS ...

New super stones

REF	Grain	Shape	Color	a x b	l	€
<b>NSE 051</b>	L	120		0,5 x 10	150	36,32
<b>NSG 051</b>	L	180		0,5 x 10	150	36,32
<b>NSL 051</b>	L	300		0,5 x 10	150	36,32
<b>NSO 051</b>	L	400		0,5 x 10	150	36,32
<b>NSP 051</b>	L	600		0,5 x 10	150	36,32
<b>NSB 051</b>	L	800		0,5 x 10	150	32,89
<b>NSW 051</b>	L	1000		0,5 x 10	150	32,89
<b>NSR 051</b>	L	1200		0,5 x 10	150	32,89
<b>NSE 081</b>	L	120		0,8 x 1	150	36,32
<b>NSG 081</b>	L	180		0,8 x 1	150	36,32
<b>NSL 081</b>	L	300		0,8 x 1	150	36,32
<b>NSO 081</b>	L	400		0,8 x 1	150	36,32
<b>NSP 081</b>	L	600		0,8 x 1	150	36,32
<b>NSB 081</b>	L	800		0,8 x 1	150	32,89
<b>NSW 081</b>	L	1000		0,8 x 1	150	32,89
<b>NSR 081</b>	L	1200		0,8 x 1	150	32,89
<b>NSE 082</b>	L	120		0,8 x 2	150	8,95
<b>NSG 082</b>	L	180		0,8 x 2	150	8,95
<b>NSL 082</b>	L	300		0,8 x 2	150	8,95
<b>NSO 082</b>	L	400		0,8 x 2	150	8,95
<b>NSP 082</b>	L	600		0,8 x 2	150	8,95
<b>NSB 082</b>	L	800		0,8 x 2	150	8,27
<b>NSW 082</b>	L	1000		0,8 x 2	150	8,27
<b>NSR 082</b>	L	1200		0,8 x 2	150	8,27
<b>NSE 084</b>	L	120		0,8 x 4	150	18,16
<b>NSG 084</b>	L	180		0,8 x 4	150	18,16
<b>NSL 084</b>	L	300		0,8 x 4	150	18,16
<b>NSO 084</b>	L	400		0,8 x 4	150	18,16
<b>NSP 084</b>	L	600		0,8 x 4	150	18,16
<b>NSB 084</b>	L	800		0,8 x 4	150	16,33
<b>NSW 084</b>	L	1000		0,8 x 4	150	16,33
<b>NSR 084</b>	L	1200		0,8 x 4	150	16,33
<b>NSE 086</b>	L	120		0,8 x 6	150	27,58
<b>NSG 086</b>	L	180		0,8 x 6	150	27,58
<b>NSL 086</b>	L	300		0,8 x 6	150	27,58
<b>NSO 086</b>	L	400		0,8 x 6	150	27,58
<b>NSP 086</b>	L	600		0,8 x 6	150	27,58
<b>NSB 086</b>	L	800		0,8 x 6	150	24,59
<b>NSW 086</b>	L	1000		0,8 x 6	150	24,59
<b>NSR 086</b>	L	1200		0,8 x 6	150	24,59

• upon request

14/08/2012



New super stones

NS ...

REF	Grain	Shape	Color	a x b	l	€
<b>NSE 801 L</b>	120			0,8 x 10	150	8,95
<b>NSG 801 L</b>	180			0,8 x 10	150	8,95
<b>NSL 801 L</b>	300			0,8 x 10	150	8,95
<b>NSO 801 L</b>	400			0,8 x 10	150	8,95
<b>NSP 801 L</b>	600			0,8 x 10	150	8,95
<b>NSB 801 L</b>	800			0,8 x 10	150	8,27
<b>NSW 801 L</b>	1000			0,8 x 10	150	8,27
<b>NSR 801 L</b>	1200			0,8 x 10	150	8,27
<b>NSE 101 L</b>	120			1,0 x 1	150	8,95
<b>NSG 101 L</b>	180			1,0 x 1	150	8,95
<b>NSL 101 L</b>	300			1,0 x 1	150	8,95
<b>NSO 101 L</b>	400			1,0 x 1	150	8,95
<b>NSP 101 L</b>	600			1,0 x 1	150	8,95
<b>NSB 101 L</b>	800			1,0 x 1	150	8,27
<b>NSW 101 L</b>	1000			1,0 x 1	150	8,27
<b>NSR 101 L</b>	1200			1,0 x 1	150	8,27
<b>NSE 102 L</b>	120			1,0 x 2	150	8,95
<b>NSG 102 L</b>	180			1,0 x 2	150	8,95
<b>NSL 102 L</b>	300			1,0 x 2	150	8,95
<b>NSO 102 L</b>	400			1,0 x 2	150	8,95
<b>NSP 102 L</b>	600			1,0 x 2	150	8,95
<b>NSB 102 L</b>	800			1,0 x 2	150	8,27
<b>NSW 102 L</b>	1000			1,0 x 2	150	8,27
<b>NSR 102 L</b>	1200			1,0 x 2	150	8,27
<b>NSE 104 L</b>	120			1,0 x 4	150	18,16
<b>NSG 104 L</b>	180			1,0 x 4	150	18,16
<b>NSL 104 L</b>	300			1,0 x 4	150	18,16
<b>NSO 104 L</b>	400			1,0 x 4	150	18,16
<b>NSP 104 L</b>	600			1,0 x 4	150	18,16
<b>NSB 104 L</b>	800			1,0 x 4	150	16,33
<b>NSW 104 L</b>	1000			1,0 x 4	150	16,33
<b>NSR 104 L</b>	1200			1,0 x 4	150	16,33
<b>NSE 106 L</b>	120			1,0 x 6	150	27,58
<b>NSG 106 L</b>	180			1,0 x 6	150	27,58
<b>NSL 106 L</b>	300			1,0 x 6	150	27,58
<b>NSO 106 L</b>	400			1,0 x 6	150	27,58
<b>NSP 106 L</b>	600			1,0 x 6	150	27,58
<b>NSB 106 L</b>	800			1,0 x 6	150	24,59
<b>NSW 106 L</b>	1000			1,0 x 6	150	24,59
<b>NSR 106 L</b>	1200			1,0 x 6	150	24,59





NS ...

New super stones

REF	Grain	Shape	Color	a x b	l	€
<b>NSE 110 L</b>	120			1,0 x 10	150	36,32
<b>NSG 110 L</b>	180			1,0 x 10	150	36,32
<b>NSL 110 L</b>	300			1,0 x 10	150	36,32
<b>NSO 110 L</b>	400			1,0 x 10	150	36,32
<b>NSP 110 L</b>	600			1,0 x 10	150	36,32
<b>NSB 110 L</b>	800			1,0 x 10	150	32,89
<b>NSW 110 L</b>	1000			1,0 x 10	150	32,89
<b>NSR 110 L</b>	1200			1,0 x 10	150	32,89
<b>NSE 151 L</b>	120			1,5 x 1	150	13,57
<b>NSG 151 L</b>	180			1,5 x 1	150	13,57
<b>NSL 151 L</b>	300			1,5 x 1	150	13,57
<b>NSO 151 L</b>	400			1,5 x 1	150	13,57
<b>NSP 151 L</b>	600			1,5 x 1	150	13,57
<b>NSB 151 L</b>	800			1,5 x 1	150	12,41
<b>NSW 151 L</b>	1000			1,5 x 1	150	12,41
<b>NSR 151 L</b>	1200			1,5 x 1	150	12,41
<b>NSE 152 L</b>	120			1,5 x 2	150	13,57
<b>NSG 152 L</b>	180			1,5 x 2	150	13,57
<b>NSL 152 L</b>	300			1,5 x 2	150	13,57
<b>NSO 152 L</b>	400			1,5 x 2	150	13,57
<b>NSP 152 L</b>	600			1,5 x 2	150	13,57
<b>NSB 152 L</b>	800			1,5 x 2	150	12,41
<b>NSW 152 L</b>	1000			1,5 x 2	150	12,41
<b>NSR 152 L</b>	1200			1,5 x 2	150	12,41
<b>NSE 154 L</b>	120			1,5 x 4	150	27,35
<b>NSG 154 L</b>	180			1,5 x 4	150	27,35
<b>NSL 154 L</b>	300			1,5 x 4	150	27,35
<b>NSO 154 L</b>	400			1,5 x 4	150	27,35
<b>NSP 154 L</b>	600			1,5 x 4	150	27,35
<b>NSB 154 L</b>	800			1,5 x 4	150	24,59
<b>NSW 154 L</b>	1000			1,5 x 4	150	24,59
<b>NSR 154 L</b>	1200			1,5 x 4	150	24,59
<b>NSE 156 L</b>	120			1,5 x 6	150	41,39
<b>NSG 156 L</b>	180			1,5 x 6	150	41,39
<b>NSL 156 L</b>	300			1,5 x 6	150	41,39
<b>NSO 156 L</b>	400			1,5 x 6	150	41,39
<b>NSP 156 L</b>	600			1,5 x 6	150	41,39
<b>NSB 156 L</b>	800			1,5 x 6	150	37,04
<b>NSW 156 L</b>	1000			1,5 x 6	150	37,04
<b>NSR 156 L</b>	1200			1,5 x 6	150	37,04

• upon request

14/08/2012



New super stones

NS ...

REF	Grain	Shape	Color	a x b	l	€
<b>NSE 150</b>	L	120		1,5 x 10	150	54,49
<b>NSG 150</b>	L	180		1,5 x 10	150	54,49
<b>NSL 150</b>	L	300		1,5 x 10	150	54,49
<b>NSO 150</b>	L	400		1,5 x 10	150	54,49
<b>NSP 150</b>	L	600		1,5 x 10	150	54,49
<b>NSB 150</b>	L	800		1,5 x 10	150	49,21
<b>NSW 150</b>	L	1000		1,5 x 10	150	49,21
<b>NSR 150</b>	L	1200		1,5 x 10	150	49,21
<b>NSE 202</b>	L	120		2,0 x 2	150	18,16
<b>NSG 202</b>	L	180		2,0 x 2	150	18,16
<b>NSL 202</b>	L	300		2,0 x 2	150	18,16
<b>NSO 202</b>	L	400		2,0 x 2	150	18,16
<b>NSP 202</b>	L	600		2,0 x 2	150	18,16
<b>NSB 202</b>	L	800		2,0 x 2	150	16,33
<b>NSW 202</b>	L	1000		2,0 x 2	150	16,33
<b>NSR 202</b>	L	1200		2,0 x 2	150	16,33
<b>NSE 204</b>	L	120		2,0 x 4	150	36,32
<b>NSG 204</b>	L	180		2,0 x 4	150	36,32
<b>NSL 204</b>	L	300		2,0 x 4	150	36,32
<b>NSO 204</b>	L	400		2,0 x 4	150	36,32
<b>NSP 204</b>	L	600		2,0 x 4	150	36,32
<b>NSB 204</b>	L	800		2,0 x 4	150	32,89
<b>NSW 204</b>	L	1000		2,0 x 4	150	32,89
<b>NSR 204</b>	L	1200		2,0 x 4	150	32,89
<b>NSE 206</b>	L	120		2,0 x 6	150	55,17
<b>SG 206</b>	L	180		2,0 x 6	150	55,17
<b>NSL 206</b>	L	300		2,0 x 6	150	55,17
<b>NSO 206</b>	L	400		2,0 x 6	150	55,17
<b>NSP 206</b>	L	600		2,0 x 6	150	55,17
<b>NSB 206</b>	L	800		2,0 x 6	150	49,21
<b>NSW 206</b>	L	1000		2,0 x 6	150	49,21
<b>NSR 206</b>	L	1200		2,0 x 6	150	49,21
<b>NSE 210</b>	L	120		2,0 x 10	150	72,65
<b>NSG 210</b>	L	180		2,0 x 10	150	72,65
<b>NSL 210</b>	L	300		2,0 x 10	150	72,65
<b>NSO 210</b>	L	400		2,0 x 10	150	72,65
<b>NSP 210</b>	L	600		2,0 x 10	150	72,65
<b>NSB 210</b>	L	800		2,0 x 10	150	65,75
<b>NSW 210</b>	L	1000		2,0 x 10	150	65,75
<b>NSR 210</b>	L	1200		2,0 x 10	150	65,75





NS ...

New super stones

REF	Grain	Shape	Color	a x b	l	€
<b>NSE 301 L</b>	120			3,0 x 1	150	27,35
<b>NSG 301 L</b>	180			3,0 x 1	150	27,35
<b>NSL 301 L</b>	300			3,0 x 1	150	27,35
<b>NSO 301 L</b>	400			3,0 x 1	150	27,35
<b>NSP 301 L</b>	600			3,0 x 1	150	27,35
<b>NSB 301 L</b>	800			3,0 x 1	150	24,59
<b>NSW 301 L</b>	1000			3,0 x 1	150	24,59
<b>NSR 301 L</b>	1200			3,0 x 1	150	24,59
<b>NSE 302 L</b>	120			3,0 x 2	150	27,35
<b>NSG 302 L</b>	180			3,0 x 2	150	27,35
<b>NSL 302 L</b>	300			3,0 x 2	150	27,35
<b>NSO 302 L</b>	400			3,0 x 2	150	27,35
<b>NSP 302 L</b>	600			3,0 x 2	150	27,35
<b>NSB 302 L</b>	800			3,0 x 2	150	24,59
<b>NSW 302 L</b>	1000			3,0 x 2	150	24,59
<b>NSR 302 L</b>	1200			3,0 x 2	150	24,59
<b>NSE 304 L</b>	120			3,0 x 4	150	54,49
<b>NSG 304 L</b>	180			3,0 x 4	150	54,49
<b>NSL 304 L</b>	300			3,0 x 4	150	54,49
<b>NSO 304 L</b>	400			3,0 x 4	150	54,49
<b>NSP 304 L</b>	600			3,0 x 4	150	54,49
<b>NSB 304 L</b>	800			3,0 x 4	150	49,21
<b>NSW 304 L</b>	1000			3,0 x 4	150	49,21
<b>NSR 304 L</b>	1200			3,0 x 4	150	49,21
<b>NSE 306 L</b>	120			3,0 x 6	150	82,78
<b>NSG 306 L</b>	180			3,0 x 6	150	82,78
<b>NSL 306 L</b>	300			3,0 x 6	150	82,78
<b>NSO 306 L</b>	400			3,0 x 6	150	82,78
<b>NSP 306 L</b>	600			3,0 x 6	150	82,78
<b>NSB 306 L</b>	800			3,0 x 6	150	73,8
<b>NSW 306 L</b>	1000			3,0 x 6	150	73,8
<b>NSR 306 L</b>	1200			3,0 x 6	150	73,8
<b>NSE 310 L</b>	120			3,0 x 10	150	108,97
<b>NSG 310 L</b>	180			3,0 x 10	150	108,97
<b>NSL 310 L</b>	300			3,0 x 10	150	108,97
<b>NSO 310 L</b>	400			3,0 x 10	150	108,97
<b>NSP 310 L</b>	600			3,0 x 10	150	108,97
<b>NSB 310 L</b>	800			3,0 x 10	150	98,43
<b>NSW 310 L</b>	1000			3,0 x 10	150	98,43
<b>NSR 310 L</b>	1200			3,0 x 10	150	98,43

• upon request

14/08/2012





New super stones

NS ...

REF	Grain	Shape	Color	∅	l	€
<b>NSE D 23 A</b>	120	○		2,35	50	12,86
<b>NSG D 23 A</b>	180	○		2,35	50	12,86
<b>NSL D 23 A</b>	300	○		2,35	50	12,86
<b>NSO D 23 A</b>	400	○		2,35	50	12,86
<b>NSP D 23 A</b>	600	○		2,35	50	12,86
<b>NSB D 23 A</b>	800	○		2,35	50	34,49
<b>NSW D 23 A</b>	1000	○		2,35	50	34,49
<b>NSR D 23 A</b>	1200	○		2,35	50	34,49
<b>NSE D 23 B</b>	120	○		2,35	100	25,3
<b>NSG D 23 B</b>	180	○		2,35	100	25,3
<b>NSL D 23 B</b>	300	○		2,35	100	25,3
<b>NSO D 23 B</b>	400	○		2,35	100	25,3
<b>NSP D 23 B</b>	600	○		2,35	100	25,3
<b>NSB D 23 B</b>	800	○		2,35	100	22,75
<b>NSW D 23 B</b>	1000	○		2,35	100	22,75
<b>NSR D 23 B</b>	1200	○		2,35	100	22,75
<b>NSE D 23 L</b>	120	○		2,35	150	37,95
<b>NSG D 23 L</b>	180	○		2,35	150	37,95
<b>NSL D 23 L</b>	300	○		2,35	150	37,95
<b>NSO D 23 L</b>	400	○		2,35	150	37,95
<b>NSP D 23 L</b>	600	○		2,35	150	37,95
<b>NSB D 23 L</b>	800	○		2,35	150	34,49
<b>NSW D 23 L</b>	1000	○		2,35	150	34,49
<b>NSR D 23 L</b>	1200	○		2,35	150	34,49
<b>NSE D 3 A</b>	120	○		3,0	50	12,86
<b>NSG D 3 A</b>	180	○		3,0	50	12,86
<b>NSL D 3 A</b>	300	○		3,0	50	12,86
<b>NSO D 3 A</b>	400	○		3,0	50	12,86
<b>NSP D 3 A</b>	600	○		3,0	50	12,86
<b>NSB D 3 A</b>	800	○		3,0	50	11,5
<b>NSW D 3 A</b>	1000	○		3,0	50	11,5
<b>NSR D 3 A</b>	1200	○		3,0	50	11,5
<b>NSE D 3 B</b>	120	○		3,0	100	25,3
<b>NSG D 3 B</b>	180	○		3,0	100	25,3
<b>NSL D 3 B</b>	300	○		3,0	100	25,3
<b>NSO D 3 B</b>	400	○		3,0	100	25,3
<b>NSP D 3 B</b>	600	○		3,0	100	25,3
<b>NSB D 3 B</b>	800	○		3,0	100	22,75
<b>NSW D 3 B</b>	1000	○		3,0	100	22,75
<b>NSR D 3 B</b>	1200	○		3,0	100	22,75





NS ...

New super stones

REF	Grain	Shape	Color	Ø	l	€
<b>NSE D3 L</b>	120	○		3,0	150	37,95
<b>NSG D3 L</b>	180	○		3,0	150	37,95
<b>NSL D3 L</b>	300	○		3,0	150	37,95
<b>NSO D3 L</b>	400	○		3,0	150	37,95
<b>NSP D3 L</b>	600	○		3,0	150	37,95
<b>NSB D3 L</b>	800	○		3,0	150	34,49
<b>NSW D3 L</b>	1000	○		3,0	150	34,49
<b>NSR D3 L</b>	1200	○		3,0	150	34,49
<b>NSE DI A</b>	120	○		3,175	50	15,17
<b>NSG DI A</b>	180	○		3,175	50	15,17
<b>NSL DI A</b>	300	○		3,175	50	15,17
<b>NSO DI A</b>	400	○		3,175	50	15,17
<b>NSP DI A</b>	600	○		3,175	50	15,17
<b>NSB DI A</b>	800	○		3,175	50	13,81
<b>NSW DI A</b>	1000	○		3,175	50	13,81
<b>NSR DI A</b>	1200	○		3,175	50	13,81
<b>NSE DI B</b>	120	○		3,175	100	30,34
<b>NSG DI B</b>	180	○		3,175	100	30,34
<b>NSL DI B</b>	300	○		3,175	100	30,34
<b>NSO DI B</b>	400	○		3,175	100	30,34
<b>NSP DI B</b>	600	○		3,175	100	30,34
<b>NSB DI B</b>	800	○		3,175	100	27,35
<b>NSW DI B</b>	1000	○		3,175	100	27,35
<b>NSR DI B</b>	1200	○		3,175	100	27,35
<b>NSE DI L</b>	120	○		3,175	150	45,51
<b>NSG DI L</b>	180	○		3,175	150	45,51
<b>NSL DI L</b>	300	○		3,175	150	45,51
<b>NSO DI L</b>	400	○		3,175	150	45,51
<b>NSP DI L</b>	600	○		3,175	150	45,51
<b>NSB DI L</b>	800	○		3,175	150	41,04
<b>NSW DI L</b>	1000	○		3,175	150	41,04
<b>NSR DI L</b>	1200	○		3,175	150	41,04

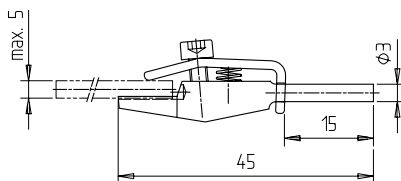
• upon request

14/08/2012



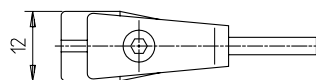
Holder for ceramic stones

MSH 0503



Features:

- Mat.: Steel



REF	€
<b>MSH 0503</b>	<b>11,65</b>





SSH ...

Holder for ceramic stones



Features:

- Mat.: plastic

REF	for ceramic stones			€
	Height	Width	Length	
<b>SSH 1</b>	0,8 - 3,0	1	150	•
<b>SSH 2</b>	0,8 - 3,0	2	150	•
<b>SSH 4</b>	0,8 - 3,0	4	150	6,04
<b>SSH 6</b>	0,8 - 3,0	6	150	6,04
<b>SSH 10</b>	0,8 - 3,0	10	150	6,04
<b>SSH 20</b>	Set: SSH 4, SSH 6, SSH 10			15,43

Info

Super diamond stones

### Application

Super diamond stones SDS are used for surface finishing of moulds. They are also excellently applicable for grinding and polishing of alloyed and non-alloyed tool steels, cast iron, various alloy metals, copper, aluminium, silicon, magnetic materials, stones, plastics, etc.

### Shape

SDS stones are of either round or rectangular cross-section.  
Lengths: 50 mm, 100 mm

### Material

SDS stones are made of a new composite material comprised of long fine ceramic fibres. Diamond grains in different layers are bonded in epoxy resin.

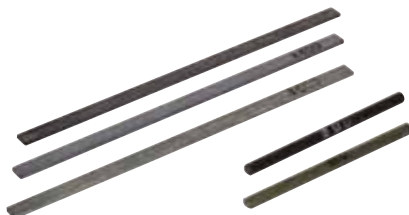
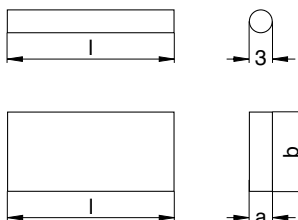
### Advantages

- excellent grinding performance
- long life
- highly stable properties
- nearly unbreakable (flexible)
- uniform surface finishing work
- easily profileable



## Super diamond stones

SDS ...



REF	Grain	Shape	a x b	l	€
SDS 142	200	l flat	1,0 x 4	100	37,07
SDS 144	400	l flat	1,0 x 4	100	37,07
SDS 146	600	l flat	1,0 x 4	100	39,01
SDS 162	200	l flat	1,0 x 6	100	56,92
SDS 164	400	l flat	1,0 x 6	100	56,92
SDS 166	600	l flat	1,0 x 6	100	56,92
SDS 112	200	l flat	1,0 x 10	100	56,92
SDS 114	400	l flat	1,0 x 10	100	56,92
SDS 116	600	l flat	1,0 x 10	100	56,92
			∅		€
SDS 32 A	200	l round	3,0	50	34,56
SDS 34 A	400	l round	3,0	50	34,56
SDS 36 A	600	l round	3,0	50	34,56
SDS 32 B	200	l round	3,0	100	68,72
SDS 34 B	400	l round	3,0	100	68,72
SDS 36 B	600	l round	3,0	100	68,72

5

## Deburring tools

WF ...

### Features:

- Safe deburring of hard plastics, non ferrous metals and mould steels.
- Ceramic blade



WF 620



WF 1540

REF	€
WF 620	21,24
WF 1540	23,99

• upon request

14/08/2012



RU 13 ...

Dressing stone



Features:

- Mat. : SIC
- A = fine
- B = coarse

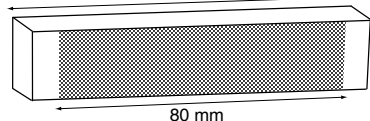
REF	Dimension	quality grade		Total length
		A	B	
<b>RU 1380 A</b>	15 x 25	1,49		50
<b>RU 1380 B</b>	15 x 25		1,77	50
<b>RU 1390 A</b>	15 x 30	3,30		100
<b>RU 1390 B</b>	15 x 30		3,56	100

DA 73

Diamond true off strips



100 mm



80 mm

Features:

- Grain: D 64
- Dimensions : 20 x 8 x 100 mm

REF	€
<b>DA 73</b>	.

HA 7 ...

Hand dressing diamonds



REF	Wheel-Ø	a x b	l	Carat	€
<b>HA 71</b>	≤ 350	25 X 10	260	2,0	140,95
<b>HA 72</b>	≥ 350	25 X 10	260	3,0	230,45

• upon request

14/08/2012



## True off diamonds

AD 1485 ...

## Features:

- with cylindrical shank



REF	Shank-Ø	Wheel-Ø	Carat	€
<b>AD 1485 0,30</b>	Ø 8 x 90	≤ 100	0,30	52,47
<b>AD 1485 0,50</b>	Ø 8 x 90	≤ 200	0,50	91,22
<b>AD 1485 0,75</b>	Ø 8 x 90	≤ 300	0,75	125,85

## Micro holder

SSH-5S

## Features:

- For delicate precision finishing
- Small and light (weight: 14 gr)
- Best suited for fine detail work
- Includes 1 set of super stones (SE054S, SL054S, SB054S)



REF	€
<b>SSH-5S</b>	19,64

## Micro Finish precision deburring tool

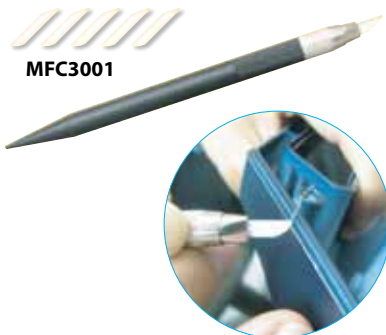
MF 400

## Features:

- Ideal for curved and complicated shapes
- Safe, ceramic knife without sharp edges
- Includes 2 blades and protective cap

## Also available:

Spare ceramic blades set of 5 (MFC3001)



REF	€
<b>MF 400</b>	23,99



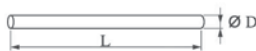
JR...

Crystal Fiber Stone Cristone®



made with the highest quality, chemically produced crystal fibers. The crystalline structure of the crystal fibers offers high polishing efficiency and incredible bending strength. These are the perfect stones for detail polishing.

Prices upon request.



Size TxWxL (ØDxL)	#150 ● 40µ	#200 ● 36µ	#400 ● 30µ	#600 ● 20µ	#800 ● 15µ	#1000 ● 10µ	Tool holder
1x2x100	JR150-0102100	JR200-0102100	JR400-0102100	JR600-0102100	JR800-0102100	JR1000-0102100	SSH2
1x4x100	JR150-0104100	JR200-0104100	JR400-0104100	JR600-0104100	JR800-0104100	JR1000-0104100	SSH4
1x6x100	JR150-0106100	JR200-0106100	JR400-0106100	JR600-0106100	JR800-0106100	JR1000-0106100	SSH6
1x10x100	JR150-0110100	JR200-0110100	JR400-0110100	JR600-0110100	JR800-0110100	JR1000-0110100	SSH10
1x13x100	JR150-0113100	JR200-0113100	JR400-0113100	JR600-0113100	JR800-0113100	JR1000-0113100	
Ø3x50	JR150-030050	JR200-030050	JR400-030050	JR600-030050	JR800-030050	JR1000-030050	
Ø3x100	JR150-0300100	JR200-0300100	JR400-0300100	JR600-0300100	JR800-0300100	JR1000-0300100	
Ø2.35x50	JR150-023550	JR200-023550	JR400-023550	JR600-023550	JR800-023550	JR1000-023550	
Ø2.35x100	JR150-0235100	JR200-0235100	JR400-0235100	JR600-0235100	JR800-0235100	JR1000-0235100	
0.3x0.3x100	JR150-0303100	JR200-0303100	JR400-0303100	JR600-0303100	JR800-0303100	JR1000-0303100	SNH05
0.5x0.5x100	JR150-0505100	JR200-0505100	JR400-0505100	JR600-0505100	JR800-0505100	JR1000-0505100	SNH07
0.7x0.7x100	JR150-0707100	JR200-0707100	JR400-0707100	JR600-0707100	JR800-0707100	JR1000-0707100	SNH09
0.9x0.9x100	JR150-0909100	JR200-0909100	JR400-0909100	JR600-0909100	JR800-0909100	JR1000-0909100	SNH13

SNH

Mini Stone Holder



REF	Description	€
SNH05	for 0.3mm square	•
SNH07	for 0.5mm square	•
SNH09	for 0.7mm square	•
SNH13	for 0.9mm square	•
SNH20	for 1.4mm square / 2mm round	•

• upon request

14/08/2012