

TABLE OF CONTENT HYDRAULIC PUMPS

Electric hydraulic pumps, tank 8 and 16 litres	GE *	60	61
Electric hydraulic pumps, tank 40 and 80 litres	GE *	62	63
Hydraulic basic diagrams		64	65
Petrol hydraulic pumps	GTM	66	67
Heavy lifting hydraulic pumps		68	

Quiri hydraulic pumps are designed with rigorous selection of component (pump, motor, valves) for high industrial performance and low maintenance costs.

Features

Electric motor, 400 VAC, 3 phases at 50 Hz, IP55

Radial piston pump.

Tank capacity 8 and 16 litres (delivered with oil) fitted with :

Filling cap with breather and oil level gauge,

Oil drain plug, carrying handles,

Pump drain.

Adjustable pressure relief valve.

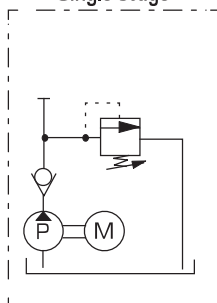


Options

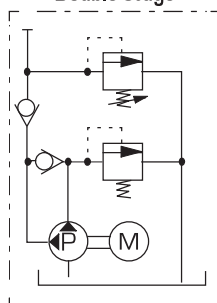
240 V - 1 phase motor.

Switch box with electrical shut-down feature to prevent from unintentional restarting of motor following an electrical service interruption.

Single stage



Double stage



Quiri hydraulic pumps are designed with rigorous selection of components (pump, motor, valves) for high industrial performance and low maintenance costs.

Remark

GEL and GEM models are fitted with a start/stop motor switch and a 3 long metre electric cable without plug.

GEE models are fitted with an electric switch box with remote control and a 3 long metre electric cable without plug.

How to built up your pump model number

Valve type	
Without valve (only pressure relief valve)	GEL
Manual operated valve	GEM
Solenoid operated valve	GEE

Series
Oil flow, pressure, motor size, Please refer to selection chart on page 61

GEM - 171 2 1

Tank capacity	
1	8 litres tank capacity
2	16 litres tank capacity


Hydraulic diagram	
0	0 Without valve (only pressure relief valve) only with GEL valve type
2	2 DM or DE 2/2 diagram
3	2 DM or DE 3/3 diagram
4	2 DM or DE 4/3 diagram

Example :
Electric hydraulic pump with manual operated valve, 0.9 l/min pump oil flow, 700 bar pressure, 1.1 kW motor size, DM 2/2 hydraulic diagram, 8 litres tank capacity.

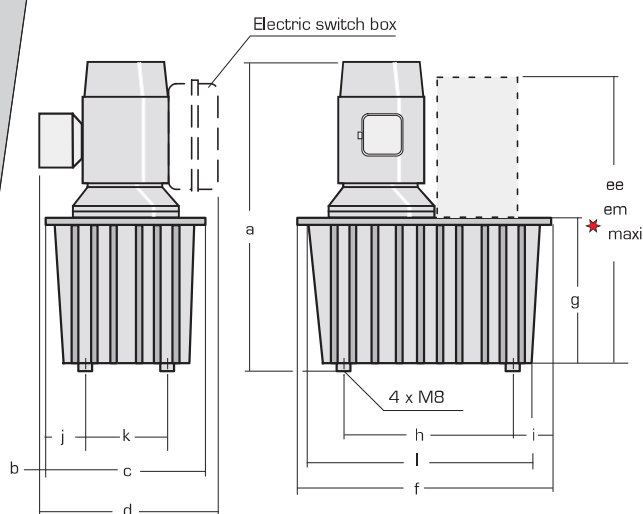
For other hydraulic diagrams, please consult us

Series selection

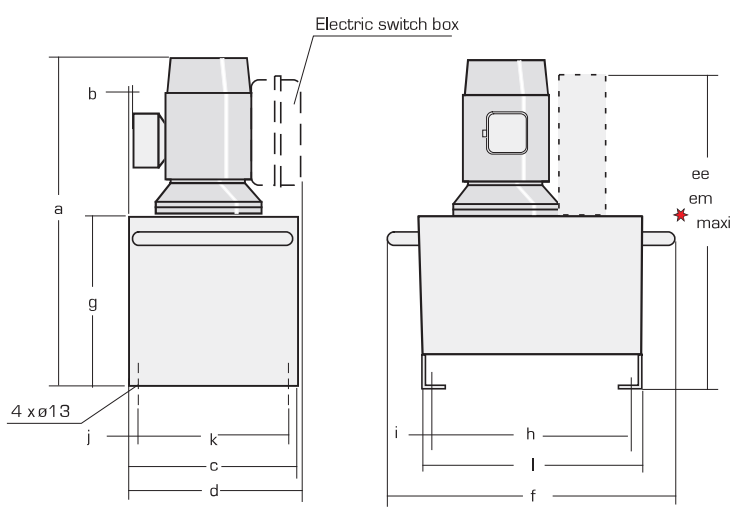
One speed electric hydraulic pump (single stage)				
Series	Pump		Maximum pressure bar	Motor size kW
	Oil flow l/mn	Number of piston		
141	3,6	3	400	3
151	2,5	3	500	2,2
161	1,5	3	600	1,5
171	0,9	3	700	1,1
172	1,4	5	700	1,85
173	2,1	7	700	3

Two speeds electric hydraulic pump (double stage) 					
Series	Pump			Maximum pressure bar	Motor size kW
	Oil flow l/mn		Number of piston		
	LP	HP			
261	5,3	1,5	5	50/600	1,85
271	8,6	0,9	7	50/700	1,85
272	4,7	0,9	5	50/700	1,5

● Only with 16 litres tank capacity



8 litres tank capacity



16 litres tank capacity

Motor	Tank	a	b	c	d	ee ★	em ★	f	g	h	i	j	k	l	Weight ▲
1.1	8	495	11	255	330	455	425	450	235	250	100	43	170	340	46
	16	570	17	310	345	530	500	530	310	380	15	25	260	410	62
1.5 / 1.85	8	495	11	255	330	455	425	450	235	250	100	43	170	340	50
	16	570	17	310	345	530	500	530	310	380	15	25	260	410	68
2.2 / 3	8	535	16	255	350	455	425	450	235	250	100	43	170	340	55
	16	610	12	310	355	530	500	530	310	380	15	25	260	410	75

★ ee - Solenoid operated valve em - Manual operated valve ▲ Approximate weight (kg) with oil and valves

PRESSURE GAUGES

74



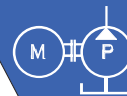
HOSES

80 81



ELECTRIC HYDRAULIC PUMPS

Electric motor - 40/80 litres tank capacity - 400-500-600-700 bar

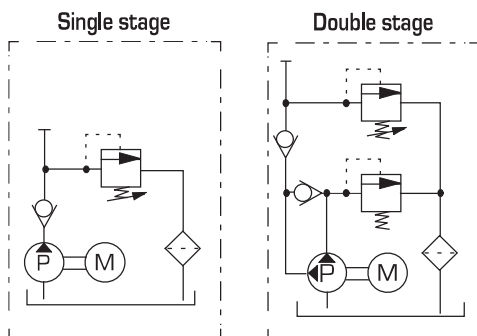


Features

- Electric motor, 400 VAC, 3 phases at 50 Hz, IP55
- Radial piston pump.
- Tank capacity 40 and 80 litres (delivered with oil) fitted with :
 - 20 micron return filter
 - 15 micron filtered breather
 - oil level gauge
 - oil drain plug
- Adjustable pressure relief valve.

Options

- 240 V - 1 phase motor.
- Switch box with electrical shut-down feature to prevent from unintentional restarting of motor following an electrical service interruption.



Quiri hydraulic pumps are designed with rigorous selection of components (pump, motor, valves) for high industrial performance and low maintenance costs.

Remark

- GEL and GEM models are fitted with a start/stop motor switch and a 3 long metre electric cable without plug.
- GEE models are fitted with an electric switch box with remote control and a 3 long metre electric cable without plug.

How to built up your pump model number

Valve type	
Without valve (only pressure relief valve)	GEL
Manual operated valve	GEM
Solenoid operated valve	GEE

Series
Oil flow, pressure, motor size, Please refer to selection chart on page 63

GEE - 174 4 4

Tank capacity	
4	40 litres tank capacity
5	80 litres tank capacity

Hydraulic diagram	
0	0 Without valve (only pressure relief valve) only with GEL valve type
2	2 DM or DE 2/2 diagram
3	3 2 DM or DE 3/3 diagram
4	4 2 DM or DE 4/3 diagram

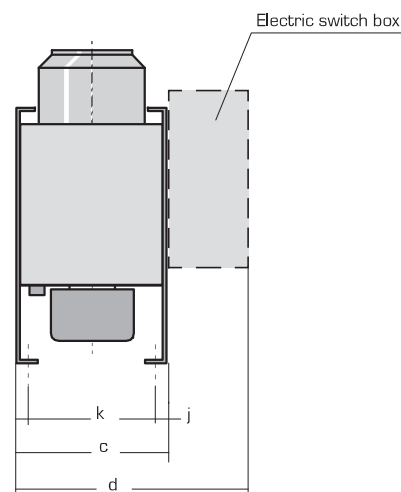
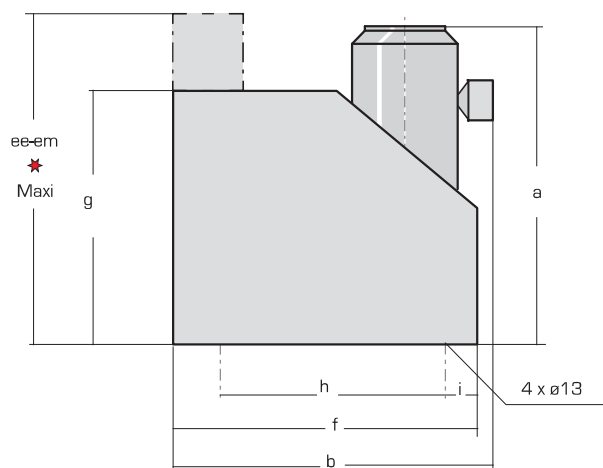
Example :
Electric hydraulic pump with solenoid operated valve, 4.9 l/min pump oil flow, 700 bar pressure, 5.5 kW motor size, DM 4/3 hydraulic diagram, 40 litres tank capacity,

For other hydraulic diagrams, please consult us

Series selection

One speed electric hydraulic pump (single stage)				
Series	Pump		Maximum pressure bar	Motor size kW
	Oil flow l/mn	Number of piston		
141	3,6	3	400	3
151	2,5	3	500	2,2
152	4,2	5	500	4
153	5,8	7	500	5,5
154	8,2	10	500	7,5
155	11,6	14	500	9
161	1,5	3	600	1,5
171	0,9	3	700	1,1
172	1,4	5	700	1,85
173	2,1	7	700	3
174	4,9	3	700	5,5

Two speeds electric hydraulic pump (double stage)					
Series	Pump			Maximum pressure bar	Motor size kW
	Oil flow l/mn		Number of piston		
	LP	HP			
261	5,3	1.5	5	50/600	1,85
271	8.6	0.9	7	50/700	1,85
272	4,7	0,9	5	50/700	1,5



Motor	Tank capacity	a	b	c	d	ee ★	em ★	f	g	h	i	j	k	Weight ▲
1.1	40	570	725	420	520	850	950	735	630	655	40	22	376	110
	80	650	840	500	600	970	1070	900	750	820	40	27	446	160
1.5 / 1.85	40	570	725	420	520	850	950	735	630	655	40	22	376	115
	80	650	840	500	600	970	1070	900	750	820	40	27	446	165
2.2 / 3	40	700	730	420	520	850	950	735	630	655	40	22	376	120
	80	710	845	500	600	970	1070	900	750	820	40	27	446	170
4	40	730	740	420	520	850	950	735	630	655	40	22	376	125
	80	750	855	500	600	970	1070	900	750	820	40	27	446	175
5.5 - 7.5 - 9	40	810	790	420	520	850	950	735	630	655	40	22	376	160
	80	820	900	500	600	970	1070	900	750	820	40	27	446	210

★ ee - Solenoid operated valve em - Manual operated valve ▲ Approximate weight (kg) with oil and valves

PRESSURE GAUGES

74



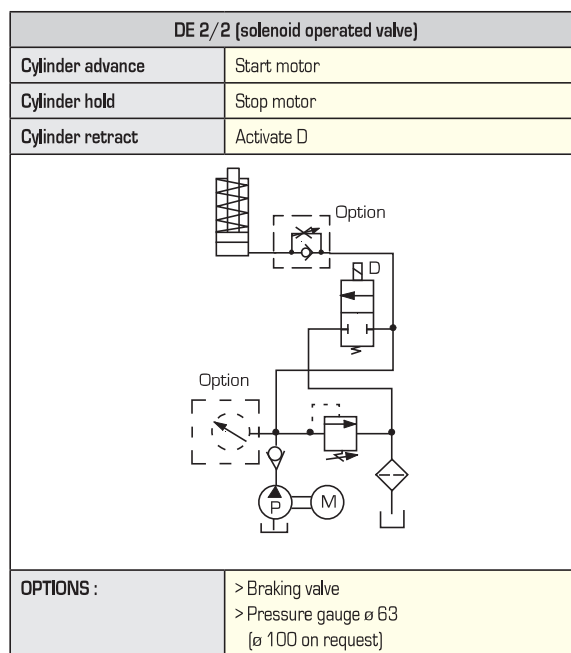
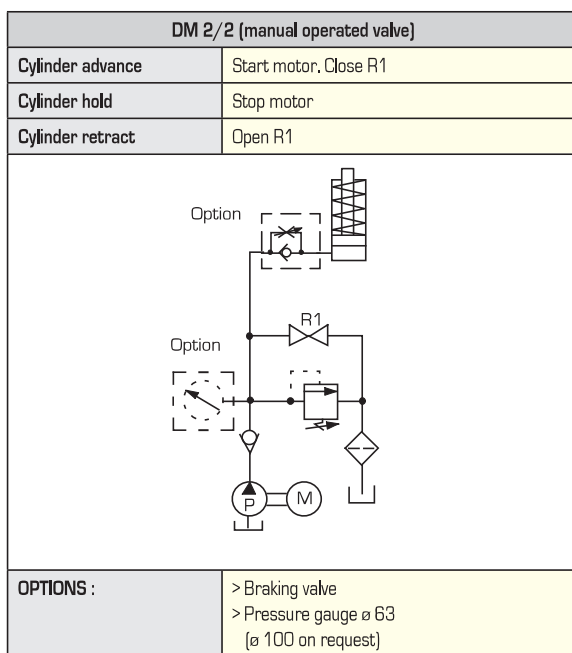
HOSES

80 81

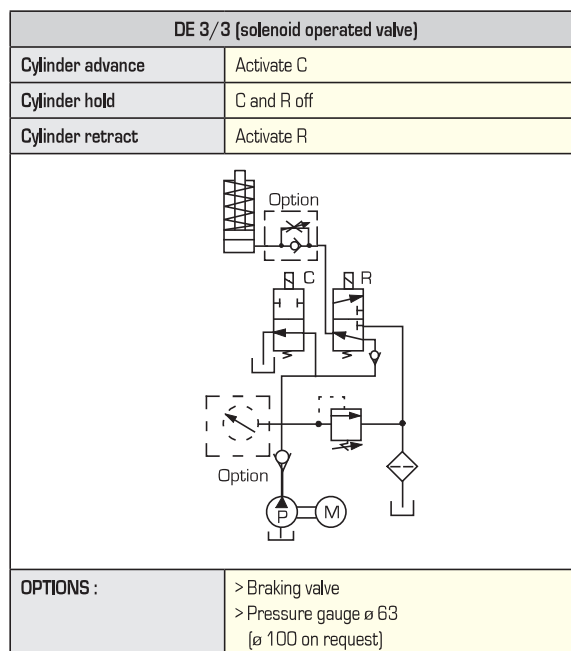
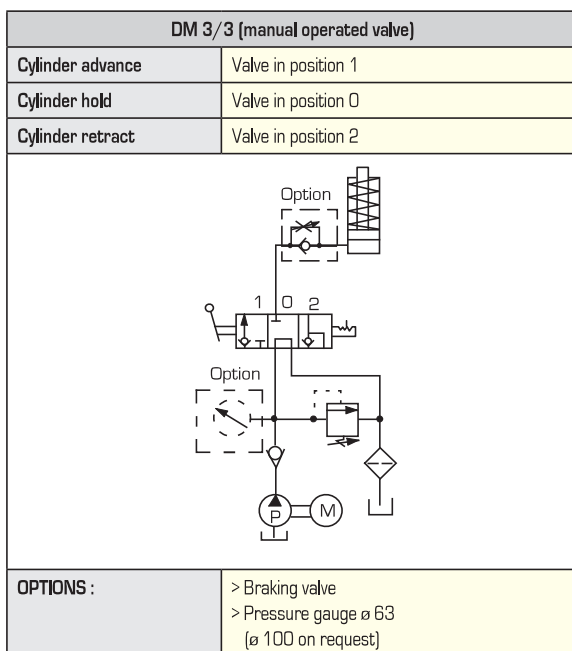


Equipment for one or several single acting cylinder.

Motor in function only during operation

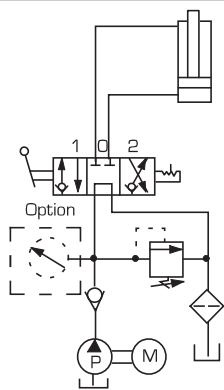


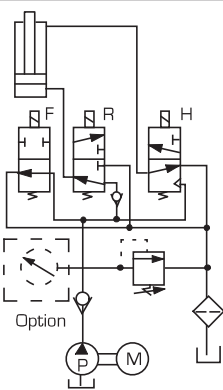
Equipment for one or several single acting cylinder



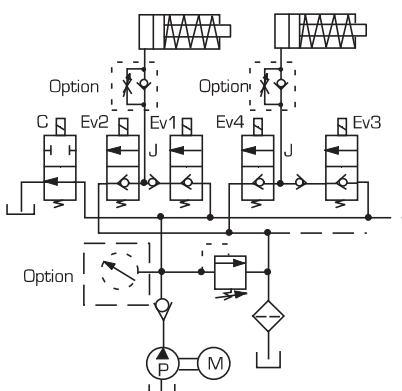
Equipment for one or several double acting cylinder

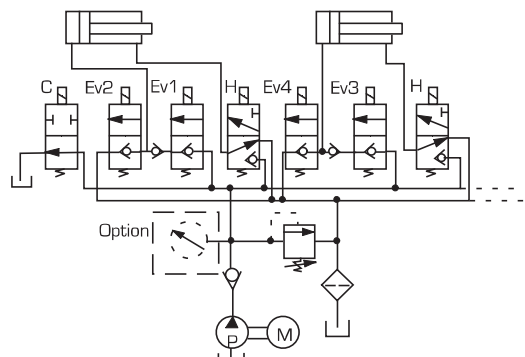
Motor in function only during operation

DM 4/3 (manual operated valve)	
Cylinder advance	Valve in position 1
Cylinder hold	Valve in position 0
Cylinder retract	Valve in position 2
	
OPTION :	> Pressure gauge ø 63 (ø 100 on request)

DE 4/3 (solenoid operated valve)	
Cylinder advance	Activate F
Cylinder hold	F, R and H off
Cylinder retract	Activate F, R and H
	
OPTION :	> Pressure gauge ø 63 (ø 100 on request)

Equipment for several cylinders, individually or together

Single acting cylinders	
Cylinder advance	Activate C, Ev1 or Ev3
Cylinder hold	C and J off
Cylinder retract	Activate Ev2 or Ev4
CJJ Diagram 	
OPTIONS :	> Braking valve > Pressure gauge ø 63 (ø 100 on request)

Double acting cylinders	
Cylinder advance	Activate C, Ev2 or Ev4
Cylinder hold	C, J and H off
Cylinder retract	Activate C, H and Ev2 or Ev5
CJHJH Diagram 	
OPTION :	> Pressure gauge ø 63 (ø 100 on request)

Features

4-stroke petrol engine 2,3 kW at 3600 rpm
Radial piston pump. Oil flow 0,73 l/mn at 2500 rpm
Tank capacity 14 litres (delivered with oil) fitted with :

- Suction strainer
- Filling cap with breather and oil level gauge,
- Oil drain plug, carrying handles,
- Pump drain.

Adjustable pressure relief valve

2 manual operated valves (with neutral position spring return)
for single acting cylinders

Hydraulic connexion for cylinders easier retraction without load

Plug for pressure gauge

Outlet fitted with RF 518 couplers

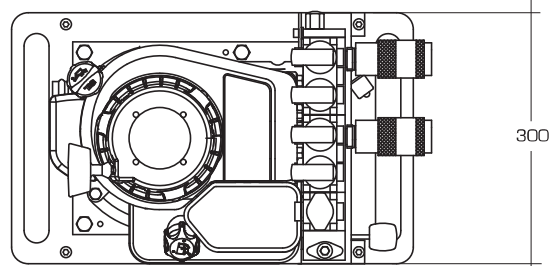
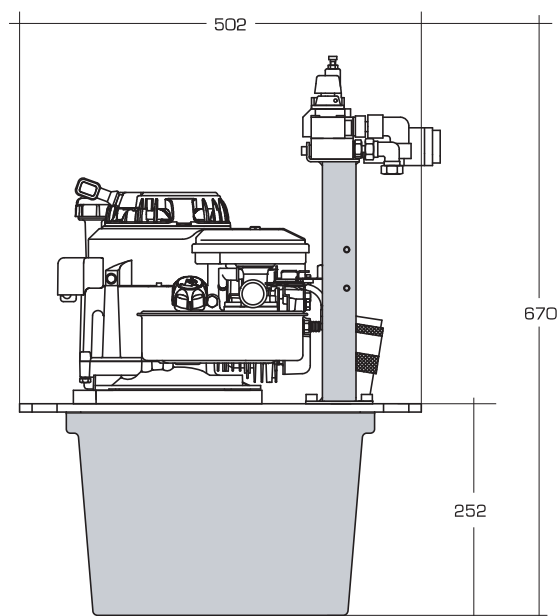
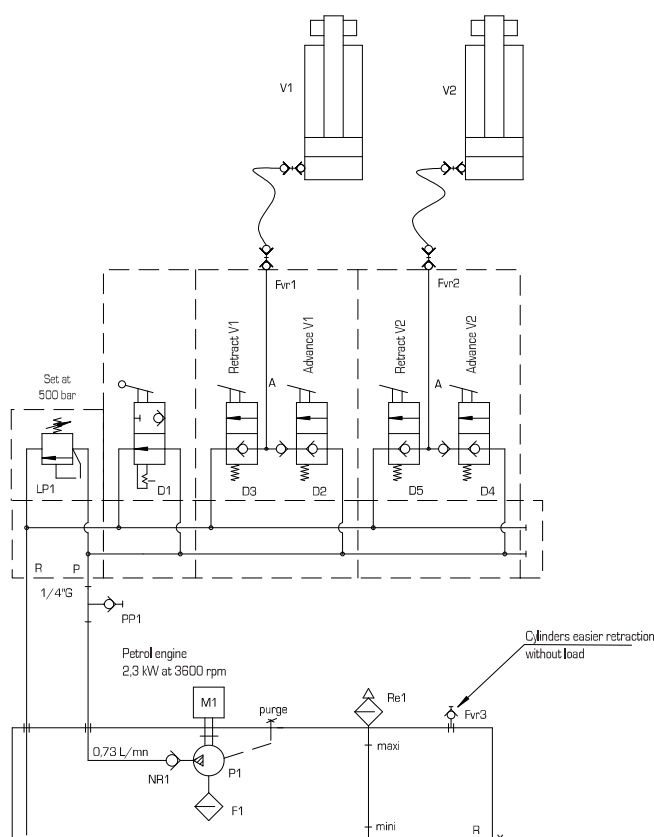
Weight (with oil) : 48 kg

Pump recommended for on site operation.

Simultaneous or independent control of 2 single acting cylinders with the 2 manual operated valves (with neutral position spring return).

Remark

For other diagrams, please consult us.



PRESSURE GAUGES

74



HOSES

80 81



COUPLERS

78



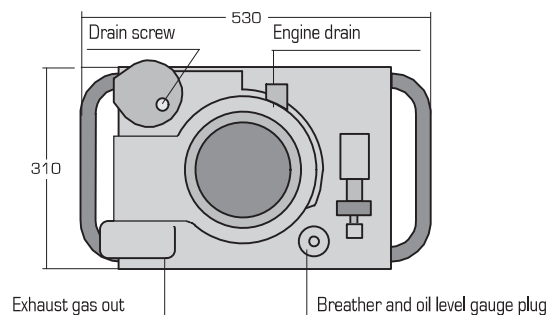
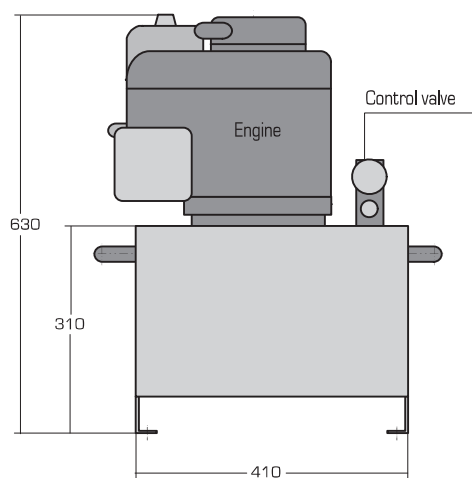
Features

- 4-strokes petrol engine 3,6 kW at 3600 rpm
- Radial piston pump. Oil flow 1,7 l/mn at 2800 rpm
- Tank capacity 16 litres tank (delivered with oil) fitted with :
 - Filling cap with breather and oil level gauge.
 - Oil drain plug, carrying handles.
 - Pump drain.
- Adjustable pressure relief valve.

Quiri petrol hydraulic pumps are designed with high quality components (pump, motor, valves) for high performance.

Remarks

For 40 and 80 litres tank capacity and other model of petrol hydraulic pumps, please consult us.



GTM 17102	GTM 17122	GTM 17132	GTM 17142
Oil port P and R : G1/4" - Weight : 66 kg	Oil port P and R : G1/4" - Weight : 68 kg	Oil port A : 3/8" NPT - Weight : 72 kg	Oil port A and B : 3/8" NPT - Weight : 72 kg

* Average weight including oil and valves.

PRESSURE GAUGES

74



HOSES

80 81



Features

Hydraulic pumps with electric motor, tank capacity 40 litres (80 litres on request) fitted with manual operated modular valves, are designed for heavy lifting operations that required precision in load lifting and lowering.

Remark

We can provide hydraulic pumps (tank capacity 40 or 80 litres) with petrol engine, please consult us.

Manual operated valves setting

Adjustable relief valve

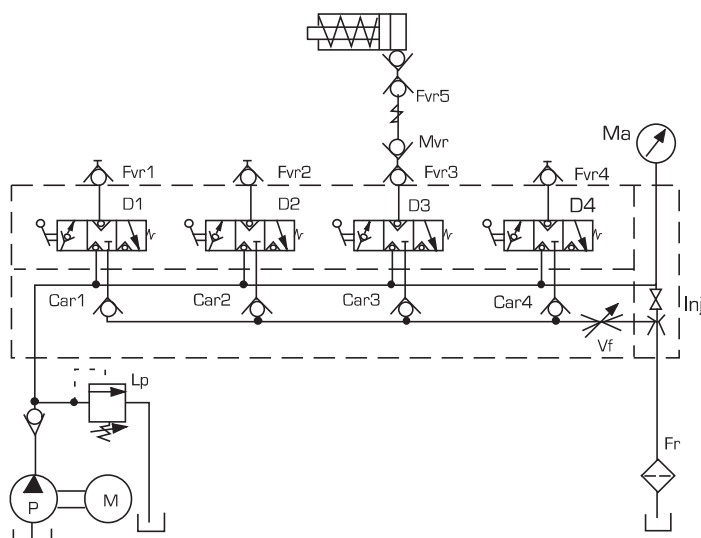
On request, relief valve with driven venting valve

Progressive braking valve to control the load lowering operation.

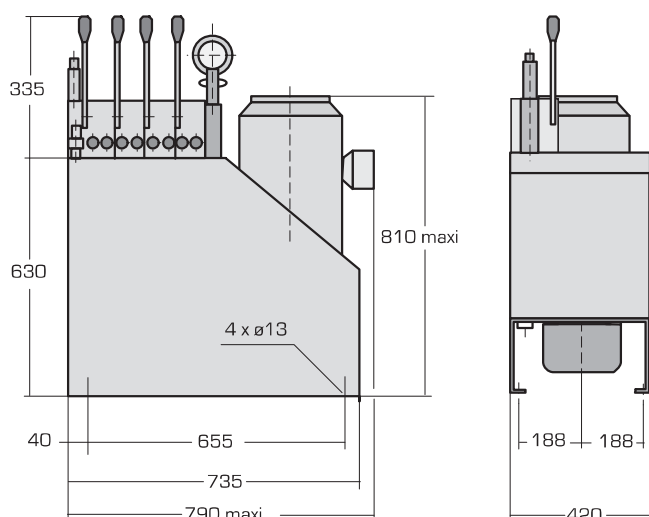
Pressure gauge Ø 63mm or Ø 100mm

Braking valve. In single acting, this braking valve is fitted with an injection valve (it increases the lowering speed without load).

3 ways manually operated seated valves for single or double acting cylinders, leakage free.



Motor - pump combination		
Pump l/mn	Pressure bar	Motor kW
0.9	600	1.1
1.5	600	1.5
2.1	600	2.2
2.5	500	2.2
3.6	400	3
4.2	500	4
4.9	600	5.5
5.8	600	5.5
8.2	500	7.5
11.6	500	9



Valves designation			
Number of valves	Single acting	Double acting	Weight kg
1	1 M 3/3	1 M 4/3	19
2	2 M 3/3	2 M 4/3	28
3	3 M 3/3	3 M 4/3	38
4	4 M 3/3	4 M 4/3	45

Single acting and double acting combination possible.

IE : 2 x M3/3 + 1 M4/3